

**Rock County, Wisconsin  
Board of Supervisors  
51 South Main Street  
Janesville, Wisconsin 53545  
Phone: 608/757-5510  
FAX: 608/757-5511**

**COUNTY BOARD STAFF/FINANCE COMMITTEES**

**FRIDAY, JULY 16, 2010 – 8:30 A.M.**

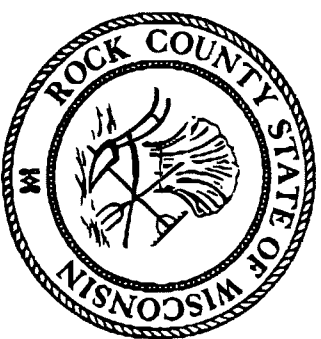
**CONFERENCE ROOM N-1/N-2 – FIFTH FLOOR**

**ROCK COUNTY COURTHOUSE-EAST**

**Agenda**

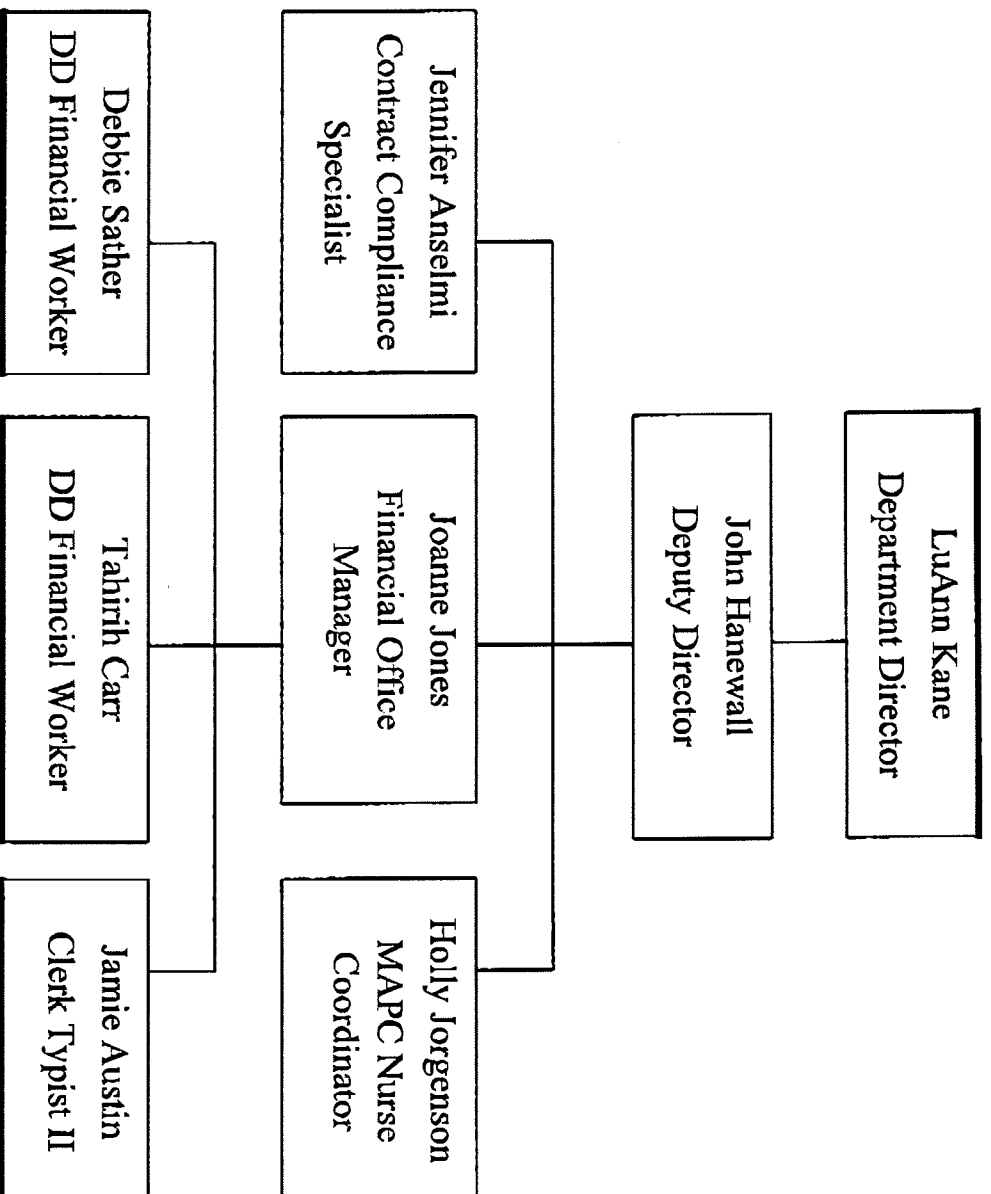
1. Call to Order & Approval of Agenda
2. Citizen Participation, Communications and Announcements
3. Approval of Minutes – June 28, 2010
4. Review and Discussion of Preliminary 2011 Budget Projections and Program Information – Developmental Disabilities
5. Set Future Meeting Dates
6. Adjournment

**ROCK COUNTY  
DEVELOPMENTAL DISABILITIES  
BOARD**



**2011 BUDGET PROPOSAL  
ISSUES FOR CONSIDERATION**

# Developmental Disabilities Board Staff Roster



## **Rock County Developmental Disabilities Board**

### **Description of Services**

#### **(What the Department does)**

- **Day Programs Services (226)**
- **Parsonage, KANDU & Enrichment Center**
- **Adult Protective Services Annual Reviews (45-50)**
- **Recreational Services (114) ...ARC**
- **Respite Care Services (430)**
- **Public Education/Information Referrals**
- **Referrals to Skilled Nursing Homes (25)**
- **Case Management (365)**
- **Developing vocational services (363) ... KANDU, Riverfront, CESA-2, Community Connections**
- **Supportive Community Living Services (45) ...IDS/Epilepsy**
- **Providing supervised living arrangement (334)**
- **Oversees Family Support (78) & the Birth-to-3 Program (107)**

## **Rock County Developmental Disabilities Board**

### **OVERVIEW OF THE PAST 12 MONTHS**

*(Highlights of what the Department has done)*

- Responded to over **4200** transactions for services (residential, vocational, case management, etc.) for over **1000** consumers.
- Relocated **10** consumers due to closures, revocation of licenses, financial exploitation, and/or lack of quality care in the home.
- Removed **10** consumers from the waiting list for comprehensive services.
- Provided supervision, case management, and oversight to over **120** consumers in the delivery of MAPC services to capture \$2.9 million dollars in reimbursement to offset the tax levy.
- Completed over **150** Long Term Care Functional Screens to determine eligibility for services (per the mandate of the State of WI Federal Waiver Program).
- Completed approx. **65** Provider Certifications to insure CIP (Federal Waiver) standards in both residential & vocational settings.

## **Rock County Developmental Disabilities Board**

### **OVERVIEW OF THE PAST 12 MONTHS**

*(Highlights of what the Department has done)*

- Reviewed certification of approx. **40** 1-2 bed Adult family Homes.
- Followed up on any deficiency notices issued by the State Division of Quality Assurance for CBRFs & 3-4 bed AFH's operating in Rock County.
- Attended IEPs in the **8** school districts for students throughout Rock County.
- Completed over **100** Quality Assurance (drop-in) Visits to vocational and residential providers to insure services were being provided.
- Assisted providers with the development of protocols regarding medical/physical health issues/concerns of clients; topics such as medication administration, seizures, prevention of falls.
- Completed approx. **40** Annual Protective Placement Reviews.
- Assisted families in approx. **30** Petitions for Guardianships.
- Provided 3 quarterly inservices and 1 full day inservice for providers, care managers, and staff in the areas of Consumer Rights, Time Management, Fall Prevention, Nutrition and other topics.

## **Rock County Developmental Disabilities Board**

### **OVERVIEW OF THE PAST 12 MONTHS**

*(Highlights of what the Department has done)*

- Completed **39** Community Aids Reporting System reports for the State (3 monthly plus 3 Annual Reviews)
- Completed **26** Reconciliation Reports to ensure State Audit compliance
- Completed **269** Representative Payee Reports to Social Security
- Completed **3** Annual WIMCR reports on Personal Care/ Case management
- Completed various other reports to DHS to ensure compliance with Waiver Programs.
- Reviewed and submitted **90** Critical Incident Reports (CIR), a specialized reporting system required for all federal waiver participants by the State of Wisconsin's Federal Waiver Program.

# **Rock County Developmental Disabilities Board**

## **Funding Sources**

This Department relies on a vast array of funding sources to operate the programs. Each of these funding sources has specific regulations as to how they may be applied, reporting requirements, and instances where funding resources may be excluded from application. Below are some of sources used by this Department in 2010.

- State Aids
- COP
- Brain Trauma State Aids
- DD Program Earnings
- CLTW Social Security
- CLTW
- CIP 1-A State
- CIP 1-B State
- Revenue from State
- County Tax Levy
- Group Home – CBRF
- Foster Care
- CIP 1-A Social Security
- CIP 1-B Social Security
- Brain Trauma Social Security
- Private Pay Unclassified
- Medical Asst/ Case Management
- Medical Asst/ Personal Care
- Federal Aid