

U.S. PUBLIC LAND SURVEY MONUMENT RECORD

For Public Land Survey Corners in:

WI ADMINISTRATIVE CODE A-E 7.08 REQUIREMENT

T. 4N., R. 10E

CORNER CODE INDEX

A	1	2	3	4	5	6	7	8	9	10	11	12	13	14	15	16	17	18	19	20	21	22	23	24	25
B																									
C	6														3										1
D																									
E																									
F																									
G	1														10										12
H																									
I																									
J																									
K																									
L	18														15										13
M																									
N																									
O																									
P	19														22										24
Q																									
R																									
S	30														27										25
T																									
U																									
V																									
W																									
X	31														34										36
Y																									
Z																									

UNION TWP
ROCK COUNTY WI

IF AVAILABLE
ROCK COUNTY COORDINATES PREFERRED

North _____ Elev. _____

East _____


Hor. Datum _____ Vert. Datum _____

LATITUDE _____ ELLIPS. HT. _____

LONGITUDE _____

GPS (X) _____ TRAVERSE (X) _____

BASED ON THE FOLLOWING CONTROL:

PLACE MONUMENT SYMBOL  AT PROPER LOCATION ON ABOVE INDEX

CORNER MONUMENT WITNESS MONUMENT

BEARINGS ARE BASED ON:

FIELD BOOK _____ PAGE # _____

SHEET 1 OF 2

SHOW A PLAN VIEW DRAWING DEPICTING THE CORNER MONUMENT AND SURROUNDING PHYSICAL FEATURES, INCLUDING THE EXCAVATION AREA AND DEPTH.

PLANNING & ZONING COMMITTEE ADOPTED THE ABOVE FORM ON 12/2/1982

CORNER CODE R15(3)

UN588

(B) Describe any record evidence, monument evidence, occupational evidence, testimonial evidence or any other material evidence you considered, and whether the monument was found or placed.

- 1870 RUGER REMONUMENTATION NOTES. PG 98 WEST ON NORTH LINE OF NE 1/4 SEC 27 ON A VAR 7-00 OFFSET NORTH 14.52' AT 2616.9' INTERSECTED QUARTER LINE 19.14' NORTH OF QUARTER CORNER. FOUND STAKE SURROUNDED BY HH STONES SET BY LOCKE AT CORNER. ALSO FOUND STUMPS OF BEARING TREES. TESTED STAKE & FOUND IT CORRECT. CORRECTED VAR 7-06
WEST ON NORTH LINE OF NW 1/4 SEC 27 ON A VAR 7-00 AT 2632.08' INTERSECTED WEST BOUNDARY LINE 6.6' NORTH OF COR. CORRECTED VAR 7-09
- 1882 RUGER VOL 2 PG 398 STATES NOTHING ABOUT MONUMENT. CALLS FOR 2665.08 TO CENTER OF SEC 27
- 1921 ELY VOL 3 PG 108 FOUND LIMESTONE. CALLS FOR NORTH 338 TO CEMETERY BOUNDARY
- 1924 ? VOL 3 PG 123 ESTABLISHED TIES BUT STATES NOTHING ABOUT MONUMENT
- 1938 SUNNY VOL 3 PG 405 FOUND PIPE IN CONCRETE RD OF STATE HWY NO 13. 2623.2 TO STONE @ SE COR SEC 22. PENCILED: MD 5327.2 TO N 1/4 COR SEC 22.
- 1977 BARNES VOL 5 PG 351 DUG HOLE 3X6 3' DEEP AND FOUND NOTHING. SET COR BY USING SUNNY'S SURVEY OF 1959. THIS AGREED WITH THE OCCUPATION LINES AT HOLY CROSS CEMETERY. HOLY CROSS CEMETERY WAS SURVEYED BY ELY IN 1921 & RECORDED IN COUNTY SURVEYORS' RECORDS VOL 3 PG 108. SET ALUM. MON. & REFERENCED SAME. MAPS SHOWS FOUND PROPERTY CORNERS WITH RECORD AND MEASURED DISTANCES.
- 198? WIDOT TIES R-15 ARE ON SHEET #5.5; STATE PROJECT 5155-0-73 CALLS FOR ALUM. MON. & REFERENCED SAME. STATE PLANE N/S 287,865.41; E/W 2,188,180.87
- 1982 BARNES R15(1) FOUND MONUMENT BOX WITH ALUM. MONUMENT 0.3' DEEP. CALLS FOR STH PROJECT 5155-0-73.
- 1985 BARNES VOL 6 PG 337 MAP SHOWS 2672.4 TO INTERSECTION OF 1/4 LINES IN SEC 27, N88-46-E 2619 TO NE COR SEC 27, & S1-08E 5340.9 TO S 1/4 COR SEC 27.
- 1994 BARNES R15(2) FD ALUM. MON. IN MON BOX & REFERENCED SAME.

FOUND DOT ROUND MONUMENT BOX WITH CUT "X" ON TOP. COULD NOT GET TOP OFF. "X" AGREED WITH REFERENCE PIN.

C) Was the corner restored through acceptance of (1) an obliterated evidence location, or, (2) a found perpetuated location?

ACCEPTED FOUND MONUMENT.

D) Describe any material discrepancy between the location of the corner as restored or reestablished and the location of that corner as previously restored or reestablished by distance and direction. Show the discrepancy on the plan view drawing under (a), above. Show the distances between the corner as previously restored or reestablished and (1) the corner as restored or reestablished, and (2) to at least 4 of the witness monuments shown on the drawing in (a), above.

(E) Was the corner reestablished through lost corner proportionate methods? If so, show the method, including the directions and distances to other public land survey corners used as evidence or used for proportioning the corner location.

I, Donald Barnes, hereby certify that the corner location as identified by the corner code index was determined by me under my direction and control and that this U.S. Public Land Survey Monument Record is correct and complete to the best of my knowledge and belief.

Seal

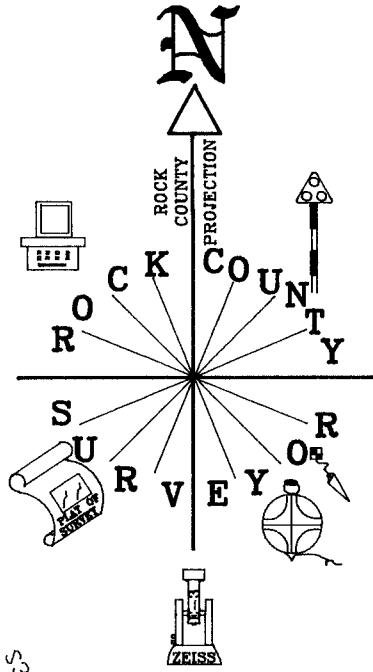

Emboss

05/08/00

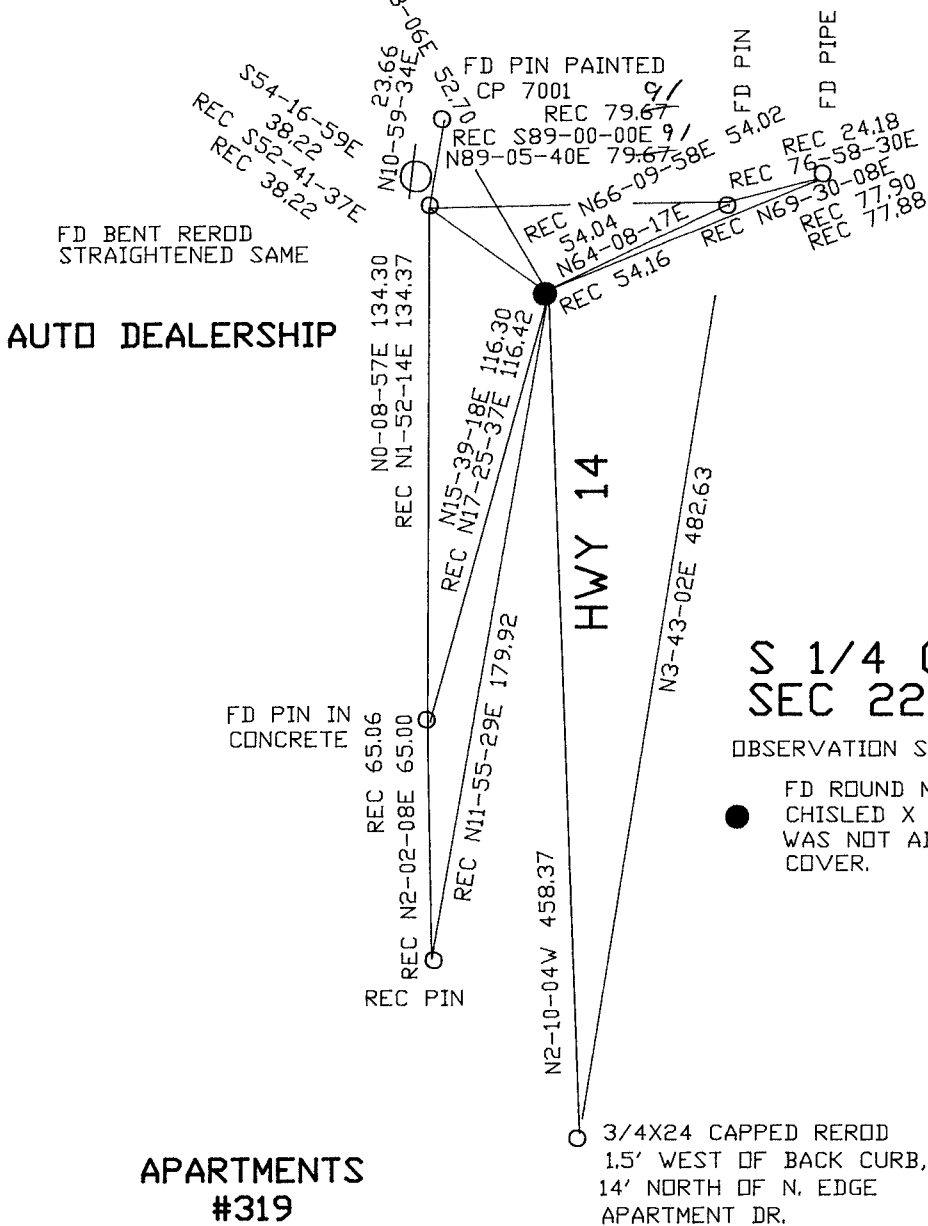
Number of included sheets 1

CORNER CODE R-15(3)

A-E 7.08 REQUIREMENT



OBSERVATION SHEETS



Donald Barnes
05/08/00

R15(3)