

Paper weight-110# (minimum)

Black nonfading ink required

U.S. PUBLIC LAND SURVEY MONUMENT RECORD

For Public Land Survey Corners In:
T. 4 N. R. 10 E. 4th P.M.
CORNER CODE INDEX

WI ADMINISTRATIVE CODE A-E 7.08 REQUIREMENT
REV 10/23/2004 USMONREC.DWG

UNION TWP
ROCK COUNTY WI

IF AVAILABLE
ROCK COUNTY COORDINATES PREFERRED

| | | | | | | | | | | | | | | | | | | | | | | | | | | |
|---|---|---|---|---|---|---|---|---|---|----|----|----|----|----|----|----|----|----|----|----|----|----|----|----|----|---|
| A | 1 | 2 | 3 | 4 | 5 | 6 | 7 | 8 | 9 | 10 | 11 | 12 | 13 | 14 | 15 | 16 | 17 | 18 | 19 | 20 | 21 | 22 | 23 | 24 | 25 | A |
| B | | 6 | | | | 5 | | | | | 4 | | | | 3 | | | | | 2 | | | | | 1 | B |
| C | | | | | | | | | | | | | | | | | | | | | | | | | | C |
| D | | | | | | | | | | | | | | | | | | | | | | | | | | D |
| E | | | | | | | | | | | | | | | | | | | | | | | | | | E |
| F | | | | | | | | | | | | | | | | | | | | | | | | | | F |
| G | | | | | | | | | | | | | | | | | | | | | | | | | | G |
| H | | | | | | | | | | | | | | | | | | | | | | | | | | H |
| I | | | | | | | | | | | | | | | | | | | | | | | | | | I |
| J | | | | | | | | | | | | | | | | | | | | | | | | | | J |
| K | | | | | | | | | | | | | | | | | | | | | | | | | | K |
| L | | | | | | | | | | | | | | | | | | | | | | | | | | L |
| M | | | | | | | | | | | | | | | | | | | | | | | | | | M |
| N | | | | | | | | | | | | | | | | | | | | | | | | | | N |
| O | | | | | | | | | | | | | | | | | | | | | | | | | | O |
| P | | | | | | | | | | | | | | | | | | | | | | | | | | P |
| Q | | | | | | | | | | | | | | | | | | | | | | | | | | Q |
| R | | | | | | | | | | | | | | | | | | | | | | | | | | R |
| S | | | | | | | | | | | | | | | | | | | | | | | | | | S |
| T | | | | | | | | | | | | | | | | | | | | | | | | | | T |
| U | | | | | | | | | | | | | | | | | | | | | | | | | | U |
| V | | | | | | | | | | | | | | | | | | | | | | | | | | V |
| W | | | | | | | | | | | | | | | | | | | | | | | | | | W |
| X | | | | | | | | | | | | | | | | | | | | | | | | | | X |
| Y | | | | | | | | | | | | | | | | | | | | | | | | | | Y |
| Z | | | | | | | | | | | | | | | | | | | | | | | | | | Z |

North _____ Elev. _____

East _____

Hor. Datum _____ Vert. Datum _____

LATITUDE _____ ELLIPS. HT. _____

LONGITUDE _____

NAD83(91) _____ NETWORK ADJ. YR 2010

GPS (X) _____ TRAVERSE (X) X

BASED ON THE FOLLOWING CONTROL:

◆ CORNER MONUMENT ○ WITNESS MONUMENT

BEARINGS ARE BASED ON: ROCK COUNTY PROJECTION

FIELD BOOK _____ PAGE # _____
OR OBSERVATION SHEET _____

SHEET 1 OF 4

SHOW A PLAN VIEW DRAWING DEPICTING THE CORNER MONUMENT AND SURROUNDING PHYSICAL FEATURES, INCLUDING THE EXCAVATION AREA AND DEPTH.

PLANNING & ZONING COMMITTEE ADOPTED THIS FORM ON 12/2/1982

CORNER CODE E-13(3)

UN527 NECORSEC9

(B) Describe any record evidence, monument evidence, occupational evidence, testimonial evidence or any other material evidence you considered, and whether the monument was found or placed.

- 1833 HARRISON (NOV 8) NORTH BETWEEN SECS 9 & 10
1782.00 LEAVE MARSH
2640.00 QUARTER SEC COR. {BURR O 12 S72W 52.80';
BURR O 12 N81W 52.14' BURR O 12 & BURR O
12} MARKED
5280.00 COR TO SEC 3,4,9,10 {BURR O 18 N47E 7.92';
BURR O 18 S41W 66.66'; BURR O 12 N25W
60.06'; BURR O 12 S27E 73.92' LAND LEVEL
2ND RATE TIMBER BURR & RED O
UNDERGROWTH GRUBS, GRASS & WEEDS
- 1833 (NOV) HARRISON (NOV 9) T4N R10E 4TH MER. EAST ON
RAND BET 4 & 9
2640.00 TEMPY 1/4 SEC COR
5290.56 INT E BDY 26.4' S OF P LAND ROLLING 2ND
RATE TIMBER RED & BURR O UNDERGROWTH
GRUBS, GRASS & WEEDS
WEST COR WEST BET 4 & 9
2645.28 QUARTER SEC COR {RED O 10 S68W 53.46'; RED
O S34E 58.08' RED O 10 & RED O 10} MARKED
5290.56 SEC COR
- 1833 HARRISON T4N R10E NORTH BETWEEN SECTIONS 3 & 4
1954.26 BURR O 10
2640.00 QUARTER SEC COR. {BURR O 12 S56W 19.8';
BURR O 12 S27E 30.36' BURR O 12 & BURR O
12} MARKED
2904.0 SMALL POND - OFFSET E 264.0'; N 726'; W
264.0'
3729.66 WO 20
5155.92 INT. N. BDY 17.82' WEST OF P. {BURR O 12
S34E 1.32'; BURR O 18 S34W 48.18' LAND & C
SAME
- 1870 RUGER AUG REMON-116 WEST ON SOUTH LINE OF SE 1/4
SEC 4 ON A VAR 7-20; AT
2667.72 INTERSECTED QUARTER LINE 13.2' NORTH OF
QUARTER CORNER. FOUND OLD STAKE AT
CORNER. ALSO FOUND WEST BEARING TREE AND
STUMP OF EAST BEARING TREE. COR VAR 7-37
WEST ON SOUTH LINE OF SW 1/4 SEC 4
ON A VAR 7-20; OFFSET NORTH 1.32 AT
2654.52 INTERSECTED WEST BOUNDARY LINE 47.52'
NORTH OF CORNER. FOUND OLD STAKE AT
CORNER. ALSO FOUND STUMP OF BEARING TREE.
COR VAR 8-20
- 1870 RUGER AUG REMON-111 NORTH ON WEST LINE OF SW
1/4 SEC 10 ON A VAR 7-00; OFFSET EAST 5.28'
OFFSET EAST 88.11' AT
2657.82 INTERSECTED QUARTER LINE 116.82' EAST OF
QUARTER CORNER. FOUND STAKE SURROUNDED
BY 4 HARD HEAD STONES SET BY SELF AT
CORNER IN A PREVIOUS SURVEY. COR VAR 7-30
REMON-113 SOUTH OF WEST LINE OF
NW 1/4 SEC 10 ON A VAR 7-10; OFFSET
WEST 8.58' OFFSET EAST 6.6' AT
2653.86 INTERSECTED QUARTER LINE 11.55' WEST OF
QUARTER CORNER. COR VAR 7-22
- 1870 RUGER AUG REMON-113 NORTH ON WEST LINE OF NW
1/4 SEC 3 ON A VAR 7-10; OFFSET EAST TO
AVOID POND. 297.99' OFFSET WEST 305.58' A

Donald
Seal
Baines
Emboss

SHEET 1 OF 4

Apr 1, 2011

CORNER CODE E-13(3)

UN527 NECORSEC9

2525.16 INTERSECTED NORTH BOUNDARY LINE 8.58'
WEST OF CORNER FOUND REMAINS OF OLD STAKE
AT CORNER. ALSO FOUND STUMP OF SW
BEARING TREE AND REMAINS OF STUMP OF SE
BEARING TREE. COR VAR 7-08

REMON-113

NORTH ON WEST LINE OF SW 1/4 SEC 3 ON A
VAR 6-55; OFFSET WEST 5.94'; OFFSET EAST
14.85' AT

2657.82 INTERSECTED QUARTER CORNER 11.88' EAST OF
QUARTER CORNER. FOUND REMAINS OF OLD
STAKE AT CORNER ALSO FD STUMPS OF BOTH
BEARING TREES. COR VAR 6-59

1870 RUGER REMONUMENTATION (SEPTEMBER)

PG 112 WEST ON NORTH LINE OF NE 1/4 SEC 10
ON A VAR 7-10, AT

2648.25 INTERSECTED QUARTER LINE 13.86' SOUTH OF
QUARTER CORNER FOUND STUMPS OF BOTH
BEARING TREES AND ESTABLISHED CORNER
FROM THEM. COR VAR 6-52. SEPTEMBER
5, 1870

PG 111 WEST ON NORTH LINE OF NW 1/4 SEC 10
ON A VAR 7-15; OFFSET NORTH 1.32' AT

2636.04 INTERSECTED WEST BOUNDARY LINE 18.48'
SOUTH OF CORNER. FOUND OLD STAKE AT
CORNER ALSO FOUND STUMP OF SOUTH
BEARING TREE. COR VAR 6-49

1946 SUNNY #5068 FD STONE MON AT COR S85-20W 1957.3X
TO PIPE WHICH IS S4-40E 109.2 FROM PIPE ON SOUTH R/W
LINE OF STH 13 & STH 14.

1957 BATTERMAN VOL 3 PG 516 DUG 5X5X2' DEEP. FD 6X6X36"
MON. SURROUNDED 4 LARGE HH. SET 2" PIPE SOUTH OF
CENTER OF RD. REF. SAME.

1970 COMBS #5118 FD CUT STONE. SOUTH TO W 1/4 COR SEC 10.
SET PIPE ON SOUTH R/W LINE OF USH 14

1971 LEE VOL 4 PG 524 FD STONE MON.

1971 LEE VOL 4 PG 532 SHOWS 1.5 NORTH OF FENCE INT.
S89-58-44W 2671.47 TO CUT LS @ N 1/4 COR SEC 9

1971 SHARKY CSM VOL 2 PG 167 FD CUT STONE. USED CUT
STONE @ S 1/4 COR SEC 4 FOR LINE.

1972 LEE CSM VOL 2 PG 352 FD CI EAST 1317.87 TO CI @ 1/16TH
COR. @ 1/16TH COR THENCE NO-17-02W 2660.46 TO CI @
1/16TH COR

1975 WILHELM VOL 5 PG 162, #7007 FD A STONE FROM
COUNTY TIES. NO-02-37E 2662.76 TO IRON PIPE @ W 1/4
COR SEC 3 & S89-27-57E 2641.91 TO A REBAR @ S 1/4
COR SEC 3. S89-27-57E 5283.82 TO REBAR @ SE COR
SEC 3

197? UNK LETTER ON BACK OF QUAD NE COR SEC 4 ALUM MON
914.62

1992 COMBS CSM VOL 15 PG 451 FD CUT STONE. 2663.88 TO
FD 1" PIPE @ W 1/4 COR SEC 10. SOUTH 841.0X TO
CENTER OF RD.

1992 WIDOT 2004 BARNES E-13(1) INFORMATION COPIED FROM
WIDOT R/W PLATS PROJ. #5155-01-21 AND DATE IS SHOWN
ON OPPOSITE SIDE. WHEN COORDINATES WERE SHOWN IN
METERS I REDUCED THEM TO US SURVEY FEET. I REDUCED
NAD 83 COORDINATES TO COUNTY COORDINATES.
HARRISON MON. S 1/4 COR TO SE COR SEC 4 N89-09-35E
2671.49 323,388.25; 416,466.30

Seal
Emboss
Donald Kaines
APRIL 1 2011

SHEET 2 OF 4

CORNER CODE **E-13(3)**

UN527 NECORSEC9

- 1993 GRENLIE CSM VOL 17 PG 125 STATES NOTHING ABOUT MON.
2665.66 TO CUT STONE @ E 1/4 COR SEC 9
- 1993 WIDOT STH 14 PROJ 5155-01-21 SHEET 4.3 #25391
HARRISON MON 303,837.44; 2,153,841.22
- 1994 KRIZAN #9516 FD SQUARE LIMESTONE S89-58-44W
2671.58 TO FD HARRISON MON & NO-08-14E 2663.15 TO FD
IRON PIPE IN MON. MANHOLE
- 1994 KRIZAN E-13 FD A LIMESTONE 1' NORTH & 0.5' EAST OF
FENCE CORNER. THIS MON. AGREES WITH PLAT AND
RECORD VOL 4 PG 532. REFERENCED SAME.
- 1996 KARNS CSM VOL 19 PG 269 ROCK COUNTY SEC COR.
2635.44 TO ROCK COUNTY SEC COR @ S 1/4 COR SEC 3.
N89-59-29E 1317.71 TO SET REBAR @ 1/16TH COR. @
1/16TH COR THENCE NO-17-52W TO LOT. 1/16TH LINE IS 11'
WEST OF N/S CENTER OF RD.
- 1999 WALKER CSM VOL 22 PG 418 FD STONE. USED CI @ N 1/4
COR SEC 9 FOR LINE
- 2004 WIDOT BARNES E-13(1) WIDOT 5155-01-21 DATED 1992 SEE
ABOVE DATA.
- 2005 KARNS #15094 FD ROCK COUNTY SEC CORNER. NO-08-18E
TO FD ROCK COUNTY SEC CORNER @ E 1/4 COR SEC 4, &
S89-58-44W TO FD ROCK COUNTY SEC CORNER @ S 1/4 COR
SEC 4
- 2007 LATHROP E-13(2) USED REFERENCE MON (FROM 5-10-
1994 KRIZAN TIE SHEET) NEAR SHED AND DISTANCE FROM N
1/4 COR 9-4-10 FROM DOT (SEE 4-02-04 TIE SHEET BY
BARNES (E-13(1)) TO ESTABLISH COR. FD STONE DISTURBED
(IN A FIREPIT). FENCES FROM KRIZAN TIE SHEET WERE
GONE. I BELIEVE STONE WAS DISTURBED FROM EARTHWORK
THAT MAY HAVE BEEN DONE WHEN FENCES WERE REMOVED
AND/ OR FIREPIT WAS BUILT. SET 3/4X24 ROUND IRON
REBAR. CORNER FALLS IN FIREPIT. N89-49W 2671.49 TO FD
CI MON @ N 1/4 COR SEC 9 & SOUTH 2663.92 TO FD PIPE @
W 1/4 COR SEC 10
- 2007 LATHROP CSM VOL 32 PG 25 FD DISTURBED STONE. SET
IRON PIN. 2663.92 TO FD PIPE @ W 1/4 COR SEC 10
- 2008 LATHROP #15968 & #15967 FD PIN. NO-21-01E 2662.97
TO FD PIPE @ W 1/4 COR SEC 3, S89-19-42E 1317.75 TO CI
@ 1/16TH COR., SOUTH 2663.92 TO FD PIPE @ W 1/4 COR
SEC 10
- 2008 LATHROP CSM VOL 32 PG 300 FD PIN 2671.49 TO FD CI @
N 1/4 COR SEC 9

FD CUT LIMESTONE 1.3' BELOW GRADE IN FIRE PIT. PLACED 2
MAGNETS ON NW SIDE OF LS. FD REFERENCE RERODS.

C) Was the corner restored through acceptance of (1) an obliterated evidence location, or, (2) a found perpetuated location?

ACCEPTED FD LS

I, **Donald Barnes**, hereby certify that the corner location as identified by the corner code index was determined by me under my direction and control and that this U.S. Public Land Survey Monument Record is correct and complete to the best of my knowledge and belief.

SEAL
Donald Barnes
Emboss

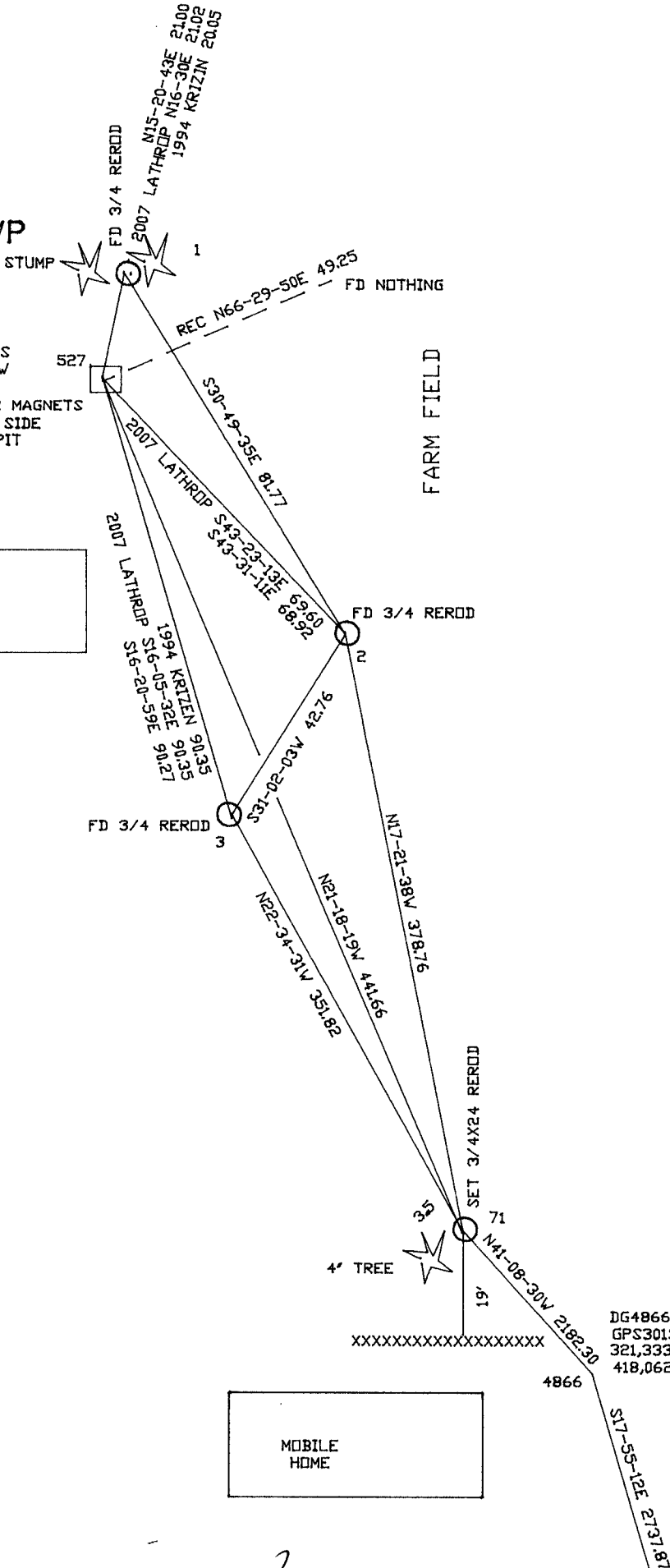
CORNER CODE

SHEET 3 OF 4

APRIL 12 2011

A.E. 7.08 REQUIREMENT

SE COR
 SEC 4
 UNION TWP
 T4N R10E



EMBOSSED SEAL
Donald B. Bowers
 APRIL 1 2011

SHEET 4 OF 4

E-13(3)