

Paper weight-110# (minimum)

Black nonfading ink required

# U.S. PUBLIC LAND SURVEY MONUMENT RECORD

For Public Land Survey Corners In:  
**T. 4 N. R. 10 E. 4th P.M.**  
CORNER CODE INDEX

WI ADMINISTRATIVE CODE A-E 7.08 REQUIREMENT  
REV 10/23/2004 USMONREC.DWG

UNION TWP  
ROCK COUNTY WI

IF AVAILABLE  
ROCK COUNTY COORDINATES PREFERRED

A	1	2	3	4	5	6	7	8	9	10	11	12	13	14	15	16	17	18	19	20	21	22	23	24	25	A	
B		6			5				4				3				2				1					B	
C																											C
D																											D
E																											E
F																											F
G																											G
H																											H
J																											J
K																											K
L																											L
M																											M
N																											N
O																											O
P																											P
Q																											Q
R																											R
S																											S
T																											T
U																											U
V																											V
W																											W
X																											X
Y																											Y
Z																											Z

North \_\_\_\_\_ Elev. \_\_\_\_\_

East \_\_\_\_\_

Hor. Datum \_\_\_\_\_ Vert. Datum \_\_\_\_\_

LATITUDE \_\_\_\_\_ ELLIPS. HT. \_\_\_\_\_

LONGITUDE \_\_\_\_\_

NAD83(91) \_\_\_\_\_ NETWORK ADJ. YR 2010

GPS (X) \_\_\_\_\_ TRAVERSE (X) X

BASED ON THE FOLLOWING CONTROL:

◆ CORNER MONUMENT

○ WITNESS MONUMENT

BEARINGS ARE BASED ON: ROCK COUNTY PROJECTION

FIELD BOOK \_\_\_\_\_ PAGE # \_\_\_\_\_  
OR OBSERVATION SHEET \_\_\_\_\_

SHEET 1 OF 4

SHOW A PLAN VIEW DRAWING DEPICTING THE CORNER MONUMENT AND SURROUNDING PHYSICAL FEATURES, INCLUDING THE EXCAVATION AREA AND DEPTH.

PLANNING & ZONING COMMITTEE ADOPTED THIS FORM ON 12/2/1982

CORNER CODE A-5(1)

UN503 NECORSEC6

(B) Describe any record evidence, monument evidence, occupational evidence, testimonial evidence or any other material evidence you considered, and whether the monument was found or placed.

1833 BRINK SOUTH BOUNDARY OF T5N R10E WEST ON SOUTH SIDE SECTION 32

- 2304.72 W. OAK 16
- 2640.00 SET QUARTER SECTION POST BURR OAK 10 N60E 38.28'; BURR OAK 10 N87W 21.78'
- 2929.74 W. OAK 14
- 5280.00 SET POST CORNER TO SECTIONS 31 & 32 BURR OAK 16 N62E 59.40'; BUR OAK 14 N48W 42.90' LAND & C SAME

1833 BRINK SOUTH BOUNDARY OF T5N R10E WEST ON SOUTH SIDE SECTION 31

- 186.12 BURR OAK 14
- 2640.00 SET QUARTER SECTION POST BURR OAK 12 N83E 144.54'; BURR OAK 16 N43 1/2W 49.5'
- 2962.08 W. OAK 16
- 5602.08 INTERSECTED RANGE LINE 957.00' NORTH OF CORNER SECTIONS 1 & 12 T4N R9E SET POST AT INTERSECTION FOR CORNER TO T4 & 5N R10E BURR OAK 12 N34E 5.28'; BURR OAK 16 S65E 81.84' LAND & C SAME.

1833 HARRISON (NOV 10TH) T4N T10E 4TH MER NORTH BET SECS 5 & 6

- 1582.02 BURR O 12
- 2640.00 QUARTER SEC. CO {BURRO 10 S74W 9.24'; BURR O 12 N53E 23.76' BURR O 10 & BURR O 12} MARKED
- 5205.42 INT. N. BDY 184.80 W OF P BURR O 12 S68W 39.60'; BURR O 14 S40E 59.40' LAND SAME AS BEFORE

1833 HARRISON (OCT 7) T5N T10E 4TH MER NORTH BET SECS 31 & 32

- 1274.46 B. OAK 12 IN
- 2640.00 SET 1/4 SEC POST BB. O 12 IN N80W 22.44'; B.B.O. 15 IN S75-15E 56.1'
- 3499.2 B.O. 10 IN
- 4333.56 BO 12 IN
- 5280.00 SET POST COR SEC 29,30,31,32 BBO 14 S46W 7.26'; BBO 12 N65-30E 26.40' LAND LEVEL 2ND RATE B.W. & YEL OAK & HAZEL UNDERGROWTH. RED ROOT INTIGO -PRAIRIE GRASS.

1856 CHURCH VOL 1 PG 61 TREES MOSTLY DECAYED TOOK OTHER TREES. BR. O 20 S46W 36.96; BR. O 16 S73-1/4E 58.08'; VAR 8 2779.26 TO N 1/4 COR SEC 5. N 1/4 COR SEC 5 TO NE COR SEC 5 VAR 8 2779.26

1856 CHURCH VOL 1 PG 83 STATES NOTHING ABOUT MON. DANE COUNTY LINE VARIATION 5-40/60. 2640.00 TO N 1/4 COR SEC 6

1870 RUGER AUG REMON-119 SOUTH ON WEST LINE OF NW 1/4 SEC 5 ON A VAR 6-45; OFFSET EAST 11.22' AT

- 2544.46 INTERSECTED QUARTER LINE 20.13' EAST OF QUARTER CORNER. FOUND EAST BEARING TREE AND REMAINS OF STUMP OF WEST BEARING TREE. ESTABLISHED CORNER FROM THEM. COR VAR 6-34'

SOUTH ON WEST LINE OF SW 1/4 SEC 5 ON A VAR 6-30; OFFSET WEST 8.58' AT

- 2665.74 INTERSECTED SOUTH BOUNDARY LINE 27.72' WEST OF CORNER. FOUND OLD STAKE AT CORNER. COR VAR 6-55

SEAL  
*Ronald Barnes*  
 Nov 1, 2011

UN503 NECORSEC6

- 1870 RUGER AUG REMON-118 SEPTEMBER 7, 1870 WEST ON NORTH LINE OF NE 1/4 SEC 5 ON A VAR 7-30; OFFSET NORTH 15.18' INTERSECTED QUARTER LINE OF SECTION 32 T5 R10 19.8' NORTH OF QUARTER CORNER. COR VAR 7-36 CONTINUED WEST ON NORTH LINE OF NW QUARTER SECTION 5 ON A VARIATION 7-30; OFFSET NORTH 19.8' OFFSET NORTH 10.56' OFFSET SOUTH 8.58' OFFSET NORTH 5.28 AT 5560.50 INTERSECTED WEST BOUNDARY LINE 7.92' NORTH OF CORNER. FOUND OLD STAKE AT CORNER. ALSO FOUND REMAINS OF THE STUMPS OF THE BEARING TREES. COR. VAR 7-05 ESTABLISHED NORTH QUARTER CORNER OF SECTION 5 ON THE TOWN LINE AND AT A POINT EQUI-DISTANT FROM THE NE AND NW CORNERS OF SAID SECTION. IT BEING 2780.25 DISTANT FROM EACH.
- 1870 RUGER AUG REMON-123 SEPTEMBER 9, 1870 COMMENCED AT NW CORNER SECTION 6 FOUND OLD STAKE AT CORNER. ALSO FOUND STUMP OF NORTH BEARING TREE AND REMAINS OF STUMP OF SOUTH BEARING TREE. EAST ON NORTH LINE OF NW 1/4 SEC 6 ON A VAR 5-40; OFFSET NORTH 44.88' INTERSECTED QUARTER LINE OF SECTION 31 T5 R10 AT QUARTER CORNER. COR VAR 6-38 CONTINUED EAST ON NORTH LINE OF NE QUARTER OF SECTION 6 ON A VAR 7-15; OFFSET SOUTH 38.94' AT 5151.96 INTERSECTED EAST BOUNDARY LINE 26.4' SOUTH OF CORNER COR. VAR 6-59' ESTABLISHED NORTH QUARTER CORNER SEC 6 ON TOWN LINE, AND AT A POINT 2641.32 EAST OF NW CORNER OF SAID SECTION AND 2510.64 WEST OF NE CORNER OF SAID SECTION.
- 1870 RUGER #7016 184.80 EAST TO SE COR SEC 31 T5N R10E. MAP OF REMONUMENTATION COPIED FROM ORIGINAL IN REGISTER OF DEED'S OFFICE.
- 1892 MARCY VOL 6 PG 351 COPIED FROM DANE COUNTY SURVEYOR'S RECORDS-BK6 PG 206&207 2/17/1886. DISTANCES IN FEET. COURSES TRUE BEARINGS VAR 4-3-15 & ??-42E FROM DUE NORTH SEE FB F P1-15. STATES NOTHING ABOUT MON. 2662.5 TO W 1/4 COR SEC 32. FROM SW COR SEC 32 VAR 4-20 655.25 TO A POINT; THENCE 1966.25 TO S 1/4 COR SEC 32 WHICH IS 266 EASTERLY OF ROCK N1/4 COR SEC 5
- 1973 COMBS CSM VOL 3 PG 28 CUT STONE. WEST 1993.30 TO POB
- 1974 LEE VOL 5 PG 51 ALUM MON @ SE COR SEC 31 SET BY DOYLE T5N R10E. 431.50 TO CUT STONE @ NE COR SEC 6. NE COR SEC 6 IS ON LINE N/S FENCE & NORTH OF E/W FENCE. WESTERLY 1554.57 TO S 1/4 COR SEC 31 T5N R10E
- 1974 DOYLE A-5 #5085 & #5087 A 6X6 LIMESTONE MONUMENT WAS NOTED TO BE IN PLACE ON JULY 19, 1974 AT THE NORTHEAST CORNER OF SECTION 6, T4N R10E (TOWN OF UNION) THE STONE IS LOCATED ON THE NORTH SIDE OF AN E-W FENCE AND IN LINE WITH A FENCE TO THE SOUTH. IT EXTENDS ABOUT 3 INCHES ABOVE GROUND. IT HAS AN ENGRAVED 6 ON ITS WEST FACE, A 5 ON ITS EAST FACE AND SHEET 2 OF 4

SEAL

Emboss

*Donald B. Baines*

Nov 1, 2011

CORNER CODE A-5(1)

UN503 NECORSEC6

- A 31 ON ITS NORTH FACE (SEE POLAR COLOR PHOTOGRAPH) S89-49-29W 1554.57 TO DANE CO. ALUM. MON AT S 1/4 COR SEC 31, T5N R10E, 431.50 TO DANE CO. ALUM. AT SE COR SEC 31, T5N R10E SEE SURVEY FIELD NOTES OF RESURVEY OF TOWN OF UNION ROCK CO (SEP 1870) FILED IN CO. SURVEYOR OFFICE AT JANESVILLE WIS. ALSO SEE SURVEY PLAT NO. 8638-L IN DANE CO. SURVEYOR'S OFFICE FILE. THE DRAWING SHOES THE ALUM. MON. @ THE SE COR SEC 31 AS S86-31-32W 11.68 OF THE N/S & E/W FENCE LINE.
- 1979 KAW #5074 & #40034 FD 6X6 LIMESTONE MON. N88-40-16E 431.56 TO DANE CO. ALUM. @ SW COR SEC 32, & FROM SW COR SEC 32 TO S 1/4 COR SEC 32 T5N R10E IS N88-44-40E 2621.17. FROM SW COR SEC 32 TO ALUM. MON @ W 1/4 COR SEC 32 IS N3-31-30W 2670.18
- 19?? UNK #13148 COORDINATES FOR SE COR SEC 31 ARE 308,811.82; 2,174,837.87 N4-27-12W 2670.06 TO E 1/4 COR SEC 31 [311,473.82; 2,174,630.54], S87-54-58W 443.14 TO N 1/4 COR SEC 6 [308,795.71; 2,174,395.02], & 2659.89 FROM SE COR SEC 31 TO S 1/4 COR SEC 31.
- 2011 DALSING GCM PRELIM FD CUT STONE. S01-49-29E 2551.59 TO FD ALUM. MON @ W 1/4 COR SEC 5; N88-22-55E 431.70 TO FD ALUM. MON @ SW COR SEC 32; S88-01-02W 100.14 TO FD 1" PIPE.
- 2011 COMBS GCM VOL34 PG 251 FD CUT STONE MON. 2551.59 TO FD ALUM @ E 1/4 COR SEC 6

FD CUT LIMESTONE @ NE COR SEC 5 & ALUM @ SE COR SEC 31.

C) Was the corner restored through acceptance of (1) an obliterated evidence location, or, (2) a found perpetuated location?

ACCEPTED FD CUT LIMESTONE. DID NOT ACCEPT FD ALUM @ SE COR SEC 31, WHICH WAS SET BY DOYLE IN 1974. THERE IS A LARGE DIFFERENCE IN RECORD JOG DISTANCES.


D) Describe any material discrepancy between the location of the corner as restored or reestablished and the location of that corner as previously restored or reestablished by distance and direction. Show the discrepancy on the plan view drawing under (a), above. Show the distances between the corner as previously restored or reestablished and (1) the corner as restored or reestablished, and (2) to at least 4 of the witness monuments shown on the drawing in (a), above.

THERE IS A 246.80' DIFFERENCE BETWEEN THE JOG DISTANCE AS MONUMENTED AND THE 1833 & 1870 RECORD DISTANCES.

(E) Was the corner reestablished through lost corner proportionate methods? If so, show the method, including the directions and distances to other public land survey corners used as evidence or used for proportioning the corner location.

NO

I, **Donald Barnes**, hereby certify that the corner location as identified by the corner code index was determined by me under my direction and control and that this U.S. Public Land Survey Monument Record is correct and complete to the best of my knowledge and belief.

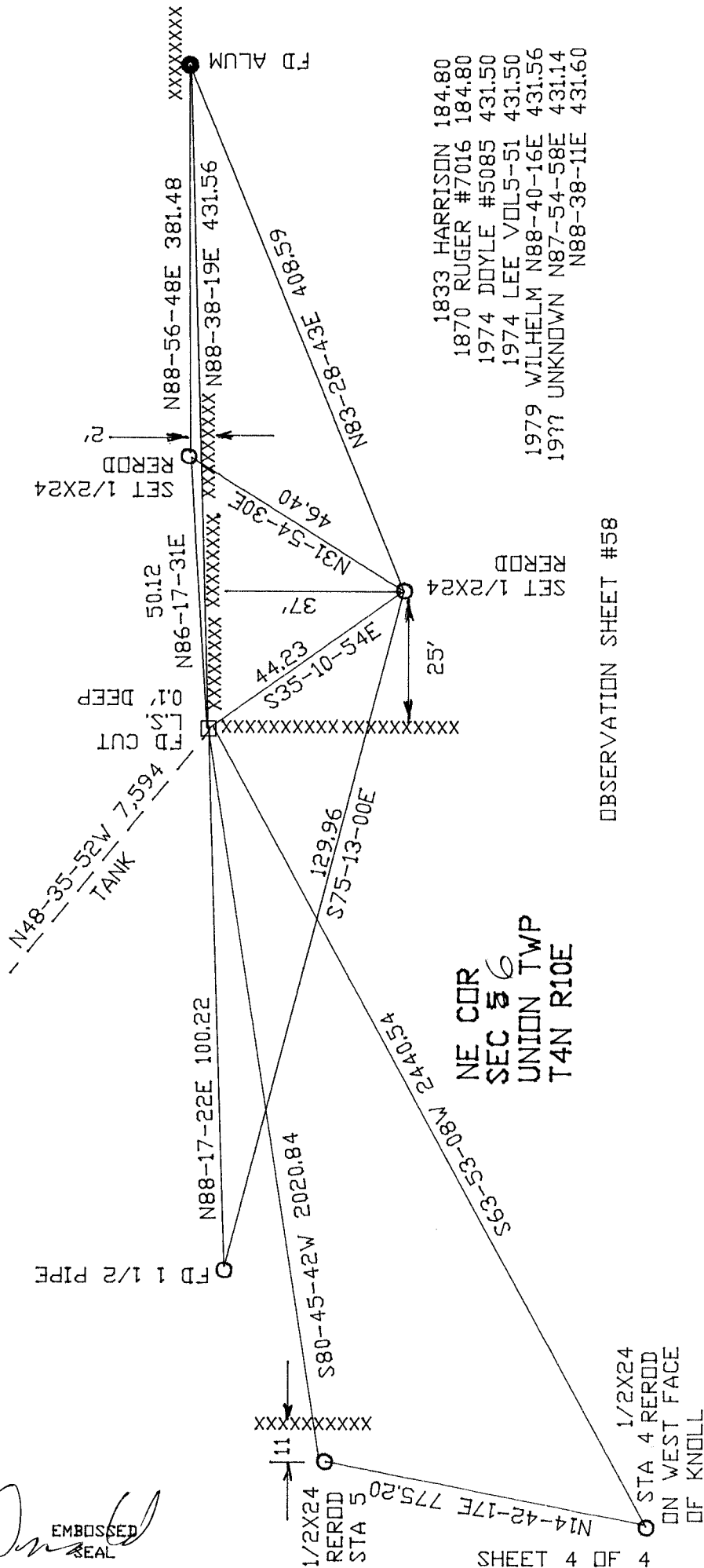
  
*Donald Barnes*  
Nov 1, 2011

SHEET 3 OF 4

CORNER CODE A-5(1)

A.E. 7.08 REQUIREMENT

*Donald Barnes*  
 EMBOSSED SEAL  
 Nov 1, 2011



- 1833 HARRISON 184.80
- 1870 RUGER #7016 184.80
- 1974 DOYLE #5085 431.50
- 1974 LEE VDL5-51 431.50
- 1979 WILHELM N88-40-16E 431.56
- 19?? UNKNOWN N87-54-58E 431.14
- N88-38-11E 431.60

NE COR  
 SEC 8  
 UNION TWP  
 T4N R10E

OBSERVATION SHEET #58

1/2X24 REROD STA 5  
 1/2X24 REROD STA 4 REROD ON WEST FACE OF KNOLL  
 SHEET 4 OF 4  
 A-1(1)