

Paper weight-110# (minimum)

Black nonfading ink required

U.S. PUBLIC LAND SURVEY MONUMENT RECORD

For Public Land Survey Corners In:
T. 4 N. R. 10 E. 4th P.M.
CORNER CODE INDEX

WI ADMINISTRATIVE CODE A-E 7.08 REQUIREMENT
REV 10/23/2004 USMONREC.DWG

UNION TWP
ROCK COUNTY WI

IF AVAILABLE
ROCK COUNTY COORDINATES PREFERRED

A	1	2	3	4	5	6	7	8	9	10	11	12	13	14	15	16	17	18	19	20	21	22	23	24	25	A
B			6				5					4				3				2				1		B
C																										C
D																										D
E																										E
F																										F
G																										G
H																										H
J																										J
K																										K
L																										L
M																										M
N																										N
O																										O
P																										P
Q																										Q
R																										R
S																										S
T																										T
U																										U
V																										V
W																										W
X																										X
Y																										Y
Z																										Z

North _____ Elev. _____

East _____

Hor. Datum _____ Vert. Datum _____

LATITUDE _____ ELLIPS. HT. _____

LONGITUDE _____

NAD83(91) _____ NETWORK ADJ. YR 2010 _____

GPS (X) _____ TRAVERSE (X) X

BASED ON THE FOLLOWING CONTROL:

PLACE MONUMENT SYMBOL AT PROPER LOCATION ON ABOVE INDEX

CORNER MONUMENT

WITNESS MONUMENT

(a)

ROCK COUNTY PROJECTION
BEARINGS ARE BASED ON: _____

FIELD BOOK _____ PAGE # _____
OR OBSERVATION SHEET _____

SHEET 1 OF 3

SHOW A PLAN VIEW DRAWING DEPICTING THE CORNER MONUMENT AND SURROUNDING PHYSICAL FEATURES, INCLUDING THE EXCAVATION AREA AND DEPTH.

PLANNING & ZONING COMMITTEE ADOPTED THIS FORM ON 12/2/1982

CORNER CODE G-13

UN537 W1/4CORSEC10
UN537 W1/4CORSEC10

(B) Describe any record evidence, monument evidence, occupational evidence, testimonial evidence or any other material evidence you considered, and whether the monument was found or placed.

- 1833 HARRISON (NOV 8) NORTH BETWEEN SECS 9 & 10
1782.00 LEAVE MARSH
2640.00 QUARTER SEC COR. {BURR O 12 S72W 52.80';
BURR O 12 N81W 52.14' BURR O 12 & BURR O
12} MARKED
5280.00 COR TO SEC 3,4,9,10 {BURR O 18 N47E 7.92';
BURR O 18 S41W 66.66'; BURR O 12 N25W
60.06'; BURR O 12 S27E 73.92' LAND LEVEL
2ND RATE TIMBER BURR & RED O
UNDERGROWTH GRUBS, GRASS & WEEDS
- 1859 RUGER VOL 1 PG 116 & #5108 POPLAR 6 N42-08?; BURR
OAK 13 S54-30E ?? {SEE BELOIT REC} VAR 8-05
SURROUNDED POST BY 4 HH. VAR 8-30 2655.84 TO SE COR
SEC 9. USED TO SUBDIVIDE SEC 9 VAR 8-23 2673.66 FROM
W 1/4 COR TO CENTER OF SEC 9
- 1870 RUGER AUG REMON-111 NORTH ON WEST LINE OF SW
1/4 SEC 10 ON A VAR 7-00'; OFFSET EAST 5.28'
OFFSET EAST 88.11' AT
2657.82 INTERSECTED QUARTER LINE 116.82' EAST OF
QUARTER CORNER. FOUND STAKE SURROUNDED
BY 4 HARD HEAD STONES SET BY SELF AT
CORNER IN A PREVIOUS SURVEY. COR VAR 7-30
REMON-113 SOUTH OF WEST LINE OF
NW 1/4 SEC 10 ON A VAR 7-10'; OFFSET
WEST 8.58' OFFSET EAST 6.6' AT
2653.86 INTERSECTED QUARTER LINE 11.55' WEST OF
QUARTER CORNER. COR VAR 7-22
- 1942 SUNNY #5115 CORNER STONE SET IP N86-14E 1780.9 TO
IP IN CENTERLINE OF USH 14 & E/W RD.
- 1957 BATTERMAN VOL 3 PG 516. DUG 5X5X2 DEEP FOUND
6X6X36 MON SURROUNDED BY 4 HH. SET 2" PIPE 2' SOUTH
OF CENTER OF RD. BELOIT SET HAS PENCILED IN 45.28
[REC 45.36] FOR THE DISTANCE TO THE NW REFERENCE
PIPE, 42.29 [REC 42.42] TO THE NE REFERENCE PIPE, &
43.31 [REC 43.24] TO THE SW REFERENCE PIPE.
- 1959 BATTERMAN VOL 4 PG 26 DUG HOLE 12X6X3 & FD
NOTHING. RE-SET ACCORDING TO RE-SURVEY BY EDWARD
RUGER IN 1871. REFERENCED SAME. ON LINE WITH N/S
FENCE LINES. [FD CUT STONE MON REFERENCE 12-10-
63] NOTE ON BOTTOM OF PAGE "SEE VOL 3 PAGE 516" IS
NOT IN THE JANESVILLE SET.
- 1962 SHIMELL #5126 PIPE @ W 1/4 COR SEC 10. EAST 5245.20
TO STONE MON @ E 1/4 COR SEC 10
- 1963 BATTERMAN VOL 4 PG 26 FD CUT STONE MON REFERENCE
12-10-63. REFERENCED SAME. BELOIT SET IS DIFFERENT.
THAT SET CALLS FOR FD CUT STONE FOR THE REFERENCE
TIES THAT SHOWS THE ROAD. THE LOWER REFERENCE TIE IS
FOR THE ERRONEOUS PIPE.
- 1964 LEE #5109 DUG & FD 6X6 CUT STONE MON. WEST 659.03
TO POB.
- 1970 COMBS #5118 FD REFERENCE PIPES. SET 1" PIPE. S89-15-
55E TO CUT STONE @ E 1/4 COR SEC 10 & NORTH TO CUT
STONE @ NW COR SEC 10. SET 1' PIPE NORTH 33.00 ON
SEC LINE TO NW COR SEC 10
- 1971 THOM GSM VOL 2 PG 14 FD MON USED FOR LINE FD MON @
E 1/4 COR SEC 10.
- 1971 COMBS GSM VOL 2 PG 178 FD MON USED FOR LINE FD
MON @ E 1/4 COR SEC 10.
- 1972 COMBS #5121 FD 1" PIPE S89-15-55E 1960.18 TO POB.

SEAL
Emboss

Ronald Barnes
OCT 24, 2011

SHEET 1 OF 3

CORNER CODE G-13

UN537W1/4CORSEC10

1972 COMBS CSM VOL 2 PG 240 FD 1" PIPE S89-15-55E 2684.63 TO PIPE
1974 GRENLIE CSM VOL 4 PG 148 FD CUT STONE @ E 1/4 COR SEC 9 & W 1/4 COR SEC 9
1974 GRENLIE CSM VOL 4 PG 195 FD CUT STONE @ E 1/4 COR SEC 9 & W 1/4 COR SEC 9
1974 GRENLIE CSM VOL 4 PG 194 FD CUT STONE @ E 1/4 COR SEC 9 & W 1/4 COR SEC 9
1975 GRENLIE CSM VOL 4 PG 360 FD STONE
1978 SCHROEDER CSM VOL 8 PG 3 STATES NOTHING ABOUT MONUMENTS.
1979 WIDOT PROJ 5155-00-21 SHEET 4.2 #11781 1" PIPE 301,168.36; 2,185,425.96 ??? N74-40-51E 8.44 TO 1" PIPE
1981 GREENLIE CSM VOL 10 PG 318 FD CUT STONE. USED W1/4 COR SEC 9 FOR LINE
1981 GRENLIE CSM VOL 10 PG 454 FD CUT STONE. USED W1/4 COR SEC 9 FOR LINE
1985 SCHROEDER CSM VOL 12 PG 153 FD ALUM. USED FD ALUM @ CENTER OF SEC 9 FOR LINE.
1987 SCHROEDER CSM VOL 13 PG 126 FD ALUM.
1992 COMBS CSM VOL 15 PG 451 FD 1" PIPE 2663.88 TO FD CUT STONE @ NW COR SEC 10.
1993 GRENLIE CSM VOL 17 PG 125 FD CUT STONE. 2665.66 TO NE COR SEC 9. STATES NOTHING ABOUT NE COR SEC 9
1996 SCHROEDER CSM VOL 19 PG 37 STATES NOTHING ABOUT MON.
2007 LATHROP GSM VOL 32 PG 25 FD PIPE 2663.92 TO DISTURBED STONE MON/SET PIN @ NW COR SEC 10
2008 LATHROP #15968 & #15967 FD PIPE, NORTH 2663.92 TO FD PIN @ NW COR SEC 10

TIM MOORE CALL FOR METAL SOUND & 320,724.51; 416,484.75. HE FOUND NE & SE REFERENCE PIPES. FROM METAL SOUND TO NE REFERENCE PIPE HE MEASURED 31.80' [REC 31.85]. FROM METAL SOUND TO SE REFERENCE PIPE HE MEASURED 28.30 [REC 28.35]. THE BELoit SET SHOWS THE SE REFERENCE PIPE AS BEING FARTHER EAST.

FD PIPE 0.3' DEEP

C) Was the corner restored through acceptance of (1) an obliterated evidence location, or, (2) a found perpetuated location?

FD PIPE IS IN HARMONY WITH BATTERMAN'S 1963 TIES TO THE FD CUT LIMESTONE.

D) Describe any material discrepancy between the location of the corner as restored or reestablished and the location of that corner as previously restored or reestablished by distance and direction. Show the discrepancy on the plan view drawing under (a), above. Show the distances between the corner as previously restored or reestablished and (1) the corner as restored or reestablished, and (2) to at least 4 of the witness monuments shown on the drawing in (a), above.

AS SHOWN

(E) Was the corner reestablished through lost corner proportionate methods? If so, show the method, including the directions and distances to other public land survey corners used as evidence or used for proportioning the corner location. NO

I, Donald Barnes, hereby certify that the corner location as identified by the corner code index was determined by me under my direction and control and that this U.S. Public Land Survey Monument Record is correct and complete to the best of my knowledge and belief.

SEAL
Donald Barnes

OCT 24, 2011

SHEET 2 OF 3

CORNER CODE G-13

A.E. 7.08 REQUIREMENT

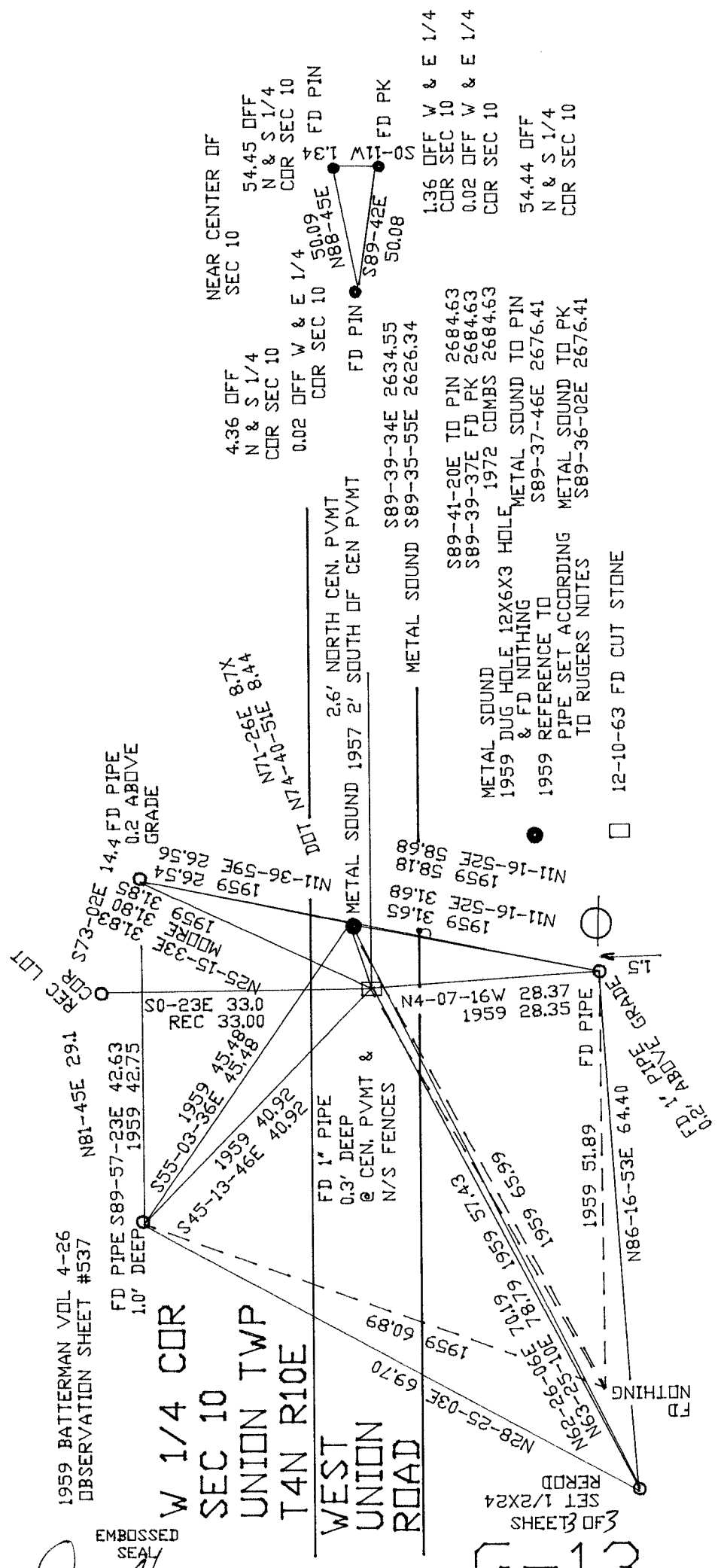
1959 BATTERMAN VOL 4-26
OBSERVATION SHEET #537

W 1/4 COR
SEC 10
UNION TWP
T4N R10E

EMBOSSED
SEAL

*Donald
Baues
OCT 24, 2011*

G-13



3 SHEETS
SET 1/2X24
RECORD