

U. S. PUBLIC LAND SURVEY MONUMENT RECORD

For Public Land Survey Corners in the

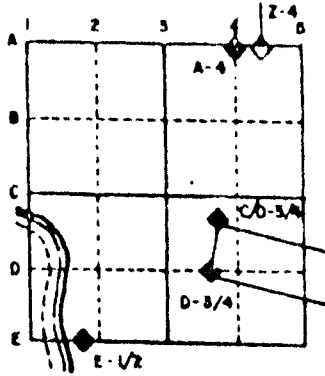
T. 4 N., R. 10 E.

CORNER CODE INDEX

	1	2	3	4	5	6	7	8	9	10	11	12	13	14	15	16	17	18	19	20	21	22	23	24	25
A																									
U																									
L	6																								
O		5																							
E			4																						
F				3																					
G					2																				
H																									
J	7																								
K		8																							
L			9																						
M				10																					
N					11																				
O						12																			
P							13																		
Q								14																	
R									15																
S										16															
T											17														
U												18													
V													19												
W														20											
X															21										
Y																22									
Z																	23								
																		24							
																			25						
																				26					
																					27				
																						28			
																							29		
																								30	
																									31
																									32
																									33
																									34
																									35
																									36

PLACE MONUMENT SYMBOL (◆) AT PROPER LOCATION ON ABOVE INDEX

EXAMPLE



UNION TWP
ROCK COUNTY WI

IF AVAILABLE
STATE PLANE COORDINATES

North (Y) _____ Eleve. (Z) _____
 East (X) _____ Zone _____
 Hor. Datum _____ Vert. Datum _____

◆ CORNER MONUMENT

○ WITNESS MONUMENT

BEARINGS ARE BASED ON: ASSUMED

(B) Describe any record evidence, monument evidence, occupational evidence, testimonial evidence or any other material evidence you considered, and whether the monument was found or placed.

- 1857 CHURCH VOL 1 PG 70 USED CORNER FOR SUBDIVIDING SECTION 21 BUT STATES NOTHING ABOUT THE CORNER.
- 1870 RUGER REMONUMENTATION NOTES.
NORTH ON EAST LINE OF SE 1/4 SEC 21 ON A VAR 7-00 OFFSET EAST 6.93' AT 2665.74 INTERSECTED QUARTER LINE 6.6' WEST OF QUARTER CORNER. FOUND BOTH BEARING STUMPS AND ESTABLISHED QUARTER CORNER FROM THEM. COR. VAR 6-43
NORTH ON EAST LINE OF NE 1/4 SEC 21 ON A VAR 7-00 AT 2658.65 INTERSECTED NORTH BOUNDARY LINE 1.98' EAST OF CORNER. COR VAR 7-02
- 1899 BROWN VOL 2 PG 512 DOESN'T STATE THE TYPE OF MONUMENT FOUND. CALLS FOR 2657.49 TO THE CENTER OF SECTION 21 AND 5326.53 TO THE W 1/4 CORNER OF SECTION 21.
- 1893 BLEEDORN VOL 2 PG 431 USED CORNER TO SUBDIVIDE SECTION 21 BUT STATES NOTHING ABOUT THE CORNER.
- 1966 FRUDDEN PLAT OF SURVEY USED THE CORNER BUT STATES NOTHING ABOUT IT. CALLS FOR 2617.00 TO THE CENTER OF SECTION 22 AND 71.30 PROPERTY CORNER ALONG THE RAILROAD R/W.
- 1972 THOUSAND CSM 3 PG 4 PLACED A IRON PIPE.
- 1977 TALARCZYK CMS VOL 7 PG 10 FOUND 1" PIPE
- 1982 COMBS PLAT OF SURVEY USED CORNER TO SUBDIVIDE SECTION 22. LEGEND CALLS FOR IRON PIN.

FOUND A 1/2" PIN AND A 1 1/4" PIN. FOUND SEVERAL PIECES OF THE TOP OF THE CUT LIMESTONE ON TOP OF GROUND ABOUT A 15" TO THE NW OF THE 1 1/4" PIN. FOUND SEVERAL PIECES OF THE CUT LIMESTONE 15" DEEP AT AND WEST OF THE 1/2" PIN. DUG AND FOUND BOTTOM OF THE CUT LIMESTONE. 0.88 NORTH OF THE 1/2" PIN. PLACED POLY MONUMENT ON TOP OF STONE & CARSONITE ON NORTH SIDE.

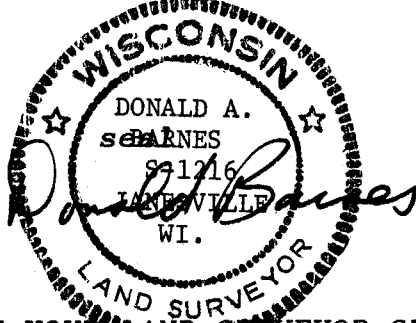
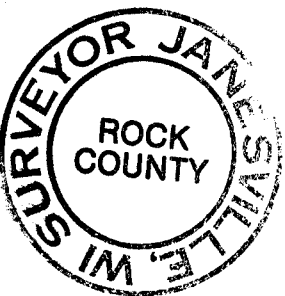
C) Was the corner restored through acceptance of (1) an obliterated evidence location, or, (2) a found perpetuated location?

ACCEPTED FOUND CUT LIMESTONE.

D) Describe any material discrepancy between the location of the corner as restored or reestablished and the location of that corner as previously restored or reestablished by distance and direction. Show the discrepancy on the plan view drawing under (a), above. Show the distances between the corner as previously restored or reestablished and (1) the corner as restored or reestablished, and (2) to at least 4 of the witness monuments shown on the drawing in (a), above.
DISCREPANCY SHOWN ON MAP.

(E) Was the corner reestablished through lost corner proportionate methods? If so, show the method, including the directions and distances to other public land survey corners used as evidence or used for proportioning the corner location.

I, Donald Barnes, hereby certify that the corner points as identified by the corner code index were, in a field survey on, November 29, 1990, established, re-established, monumented, re-monumented, recovered or restored as expressed below and in conformance with the regulations and rules as required in the current manual of survey instructions of the United States Department of Interior, Bureau of Land Management.



COUNTY SURVEYOR FILING DATA
Date of computer entry _____
Date microfilmed _____
Number of included sheets 1
CORNER CODE

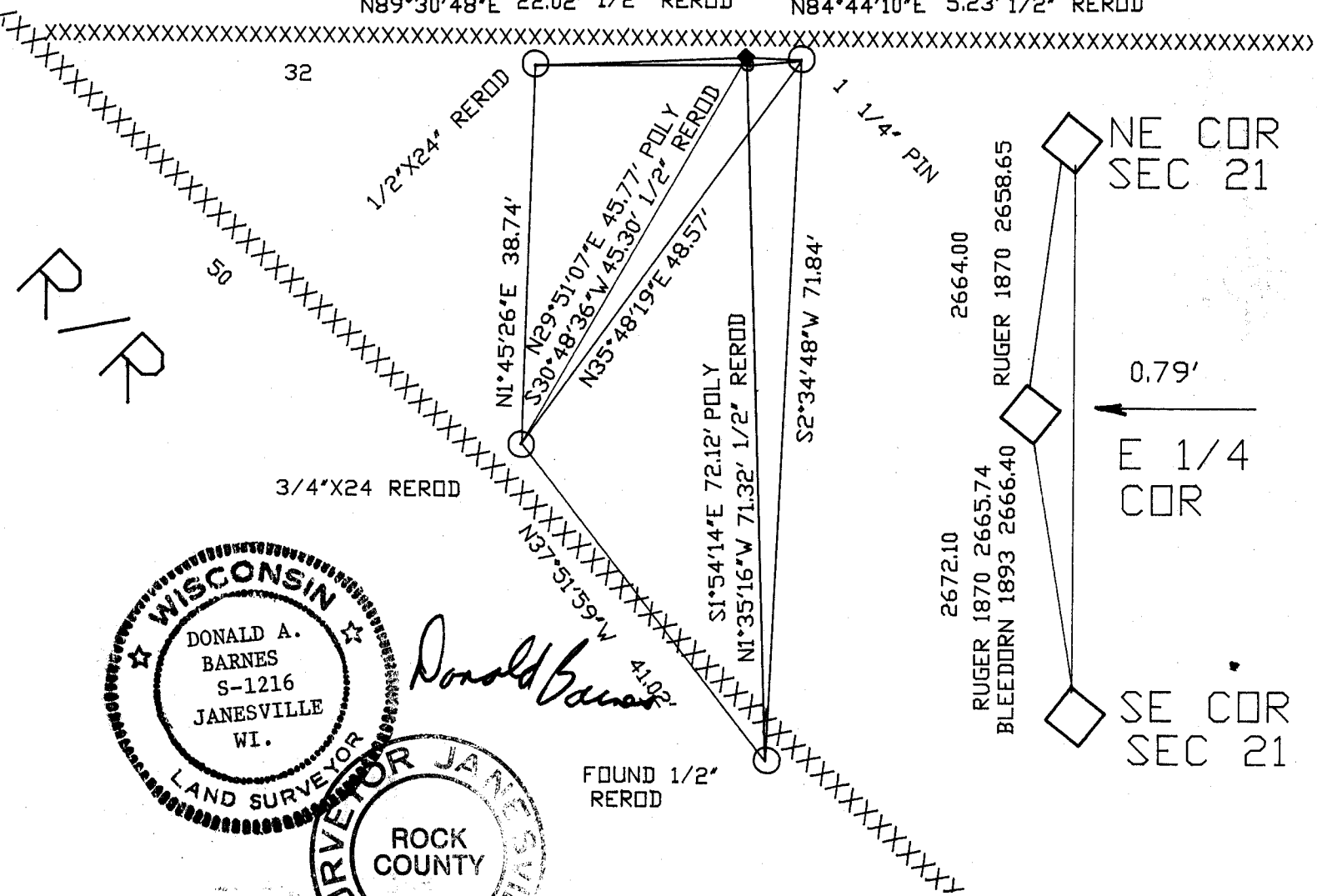
AFFIX YOUR SURVEYOR SEAL

FIELD BOOK #2 PG 42

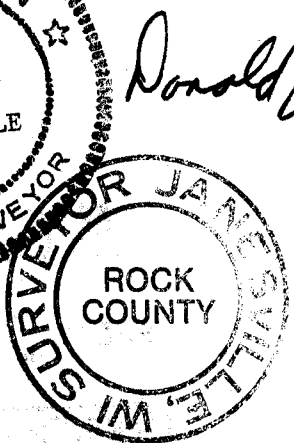
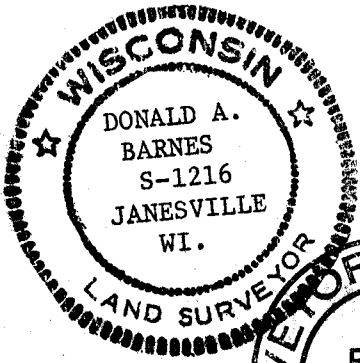
◆ POLY MON.
○ 1/2" REROD

S87°24'35"W 21.62' POLY
N89°30'48"E 22.02' 1/2" REROD

N89°23'25"E 5.64 POLY
N84°44'10"E 5.23' 1/2" REROD



R/R



Donald Barnes

FOUND 1/2" REROD