

# U.S. PUBLIC LAND SURVEY MONUMENT RECORD

For Public Land Survey Corners In:

WISCONSIN ADMINISTRATIVE CODE A-E 7.08 REQUIREMENT

T. 04 N. R. 10 E. 4th P.M.

UNION TWP  
ROCK COUNTY WI

CORNER CODE INDEX

A	1	2	3	4	5	6	7	8	9	10	11	12	13	14	15	16	17	18	19	20	21	22	23	24	25	A
B																										B
C																										C
D																										D
E																										E
F																										F
G																										G
H																										H
J																										J
K																										K
L																										L
M																										M
N																										N
O																										O
P																										P
Q																										Q
R																										R
S																										S
T																										T
U																										U
V																										V
W																										W
X																										X
Y																										Y
Z																										Z

IF AVAILABLE  
ROCK COUNTY COORDINATES PREFERRED

North \_\_\_\_\_ Elev. \_\_\_\_\_

East \_\_\_\_\_

Hor. Datum \_\_\_\_\_ Vert. Datum \_\_\_\_\_

LATITUDE \_\_\_\_\_

LONGITUDE \_\_\_\_\_

ELLIPS. HT. \_\_\_\_\_

NAD83(91) \_\_\_\_\_ NETWORK ADJ. YR \_\_\_\_\_

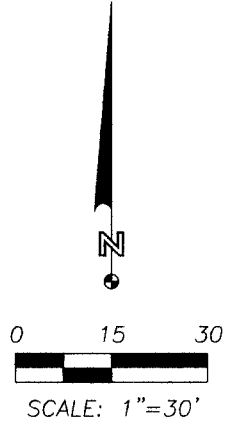
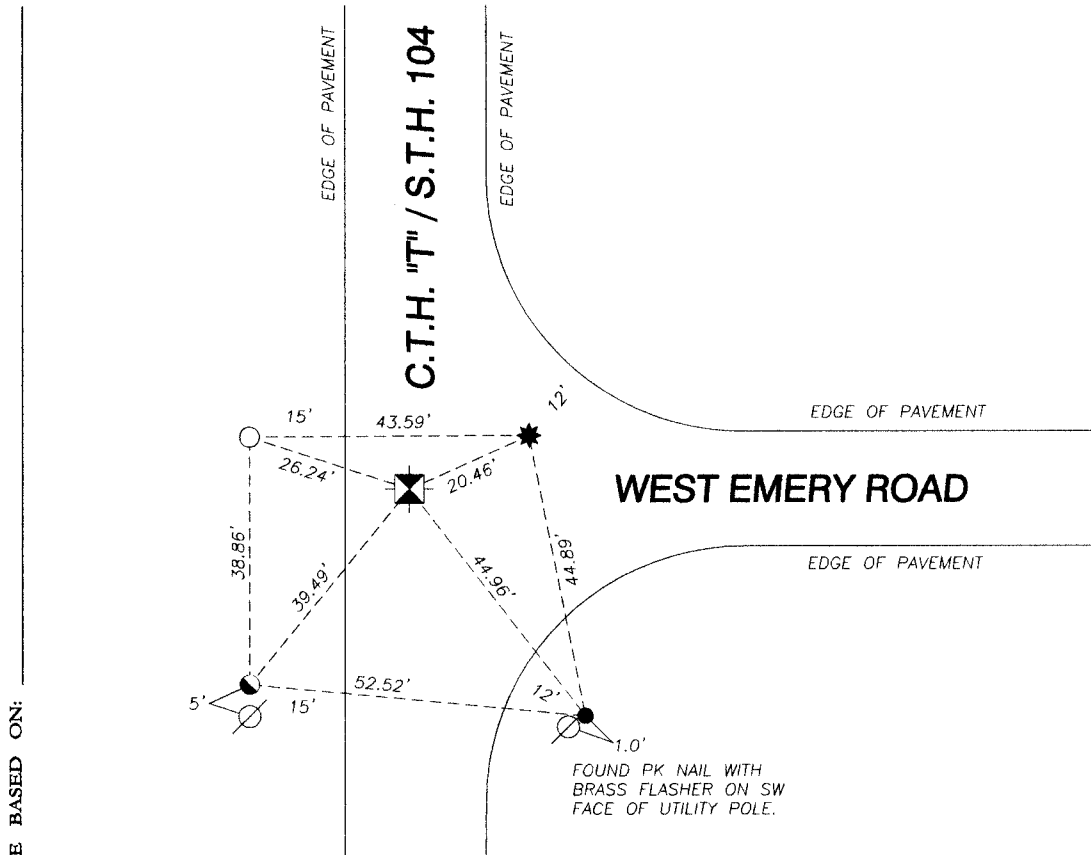
GPS (X) \_\_\_\_\_ TRAVERSE (X) \_\_\_\_\_

BASED ON THE FOLLOWING CONTROL:

PLACE MONUMENT SYMBOL AT PROPER LOCATION ON ABOVE INDEX

◆ CORNER MONUMENT      ○ WITNESS MONUMENT

(A)



BEARINGS ARE BASED ON:

LEGEND

- 1/2" x 18" REBAR SET
- 1-1/4" x 24" IRON PIPE SET
- 3/8" REBAR FOUND
- ★ COTTON SPINDLE FOUND
- ◆ FOUND ALUMINUM MONUMENT
- 5" BELOW ROAD SURFACE
- ⊘ UTILITY POLE

**NORTHWEST CORNER  
SECTION 19, T. 04 N., R. 10 E.**

FIELD BOOK 1 PAGE # 63 SHEET 1 OF 1

SHOW A PLAN VIEW DRAWING DEPICTING THE CORNER MONUMENT AND SURROUNDING PHYSICAL FEATURES, INCLUDING THE EXCAVATION AREA AND DEPTH.

CORNER CODE 561U

N-001

(B) Describe any record evidence, monument evidence, occupational evidence, testimonial evidence or any other material evidence you considered, and whether the monument was found or placed.

I found an aluminum monument 5 inches below the surface of County Trunk Highway "T"/State Road 104 at the intersection of West Emery Road. I also found an unrecorded 3/8" rebar and a cotton spindle in the vicinity evidently intended to be used as witness monuments. I also found the PK nail with brass flasher witness monument as per tie sheet filed by the Rock County Surveyor dated March 19, 1976. All other ties per this tie sheet are gone or disturbed. No current tie sheet was available.

(C) Was the corner restored through acceptance of (1) an obliterated evidence location, or, (2) a found perpetuated location?

Found perpetuated monument.

(D) Describe any material discrepancy between the location of the corner as restored or reestablished and the location of that corner as previously restored or reestablished by distance and direction. Show the discrepancy on the plan view drawing under (A) above. Show the distances between the corner as previously restored or reestablished and (1) the corner as restored or reestablished, and (2) to at least 4 of the witness monuments shown on the drawing in (A), above.

I measured a distance to an aluminum monument marking the North 1/4 corner of Section 19, T4N, R10E which matched record distance as noted on Certified Survey Map No. 1891300, Vol. 33, Pages 323-326 prepared by Ron Combs and recorded May 7, 2010.

I accepted the monument location and tied the 3/8" rebar and cotton spindle, re-set the found, disturbed iron pipe as shown and set a 1/2" x 18" rebar as shown.

(E) Was the corner reestablished through lost corner proportionate methods? If so, show the method, including the directions and distance to other public land survey corners used as evidence or used for proportioning the corner location.

No.

I, Steven L. Oftedahl, hereby certify that the corner location as defined by the corner code index was determined by me under my direction and control and that this U.S. Public Land Survey Monument Record is correct and complete to the best of my knowledge and belief.

 9-19-2011

SHEET 1 OF 1

CORNER CODE 561U

N-01