

Paper weight-110# (minimum)

ack nonfading ink required

U.S. PUBLIC LAND SURVEY MONUMENT RECORD

For Public Land Survey Corners In:

WI ADMINISTRATIVE CODE A-E 7.08 REQUIREMENT

T. 4 N. R. 10 E. 4th P.M.

REV 10/23/2004

USMONREC.DWG

CORNER CODE INDEX

| | | | | | | | | | | | | | | | | | | | | | | | | | | |
|---|---|---|---|---|---|---|---|---|---|----|----|----|----|----|----|----|----|----|----|----|----|----|----|----|----|---|
| | 1 | 2 | 3 | 4 | 5 | 6 | 7 | 8 | 9 | 10 | 11 | 12 | 13 | 14 | 15 | 16 | 17 | 18 | 19 | 20 | 21 | 22 | 23 | 24 | 25 | |
| A | | | | | | | | | | | | | | | | | | | | | | | | | | A |
| B | | | | | | | | | | | | | | | | | | | | | | | | | | B |
| C | | | | | | | | | | | | | | | | | | | | | | | | | | C |
| D | | | | | | | | | | | | | | | | | | | | | | | | | | D |
| E | | | | | | | | | | | | | | | | | | | | | | | | | | E |
| F | | | | | | | | | | | | | | | | | | | | | | | | | | F |
| G | | | | | | | | | | | | | | | | | | | | | | | | | | G |
| H | | | | | | | | | | | | | | | | | | | | | | | | | | H |
| J | | | | | | | | | | | | | | | | | | | | | | | | | | J |
| K | | | | | | | | | | | | | | | | | | | | | | | | | | K |
| L | | | | | | | | | | | | | | | | | | | | | | | | | | L |
| M | | | | | | | | | | | | | | | | | | | | | | | | | | M |
| N | | | | | | | | | | | | | | | | | | | | | | | | | | N |
| O | | | | | | | | | | | | | | | | | | | | | | | | | | O |
| P | | | | | | | | | | | | | | | | | | | | | | | | | | P |
| Q | | | | | | | | | | | | | | | | | | | | | | | | | | Q |
| R | | | | | | | | | | | | | | | | | | | | | | | | | | R |
| S | | | | | | | | | | | | | | | | | | | | | | | | | | S |
| T | | | | | | | | | | | | | | | | | | | | | | | | | | T |
| U | | | | | | | | | | | | | | | | | | | | | | | | | | U |
| V | | | | | | | | | | | | | | | | | | | | | | | | | | V |
| W | | | | | | | | | | | | | | | | | | | | | | | | | | W |
| X | | | | | | | | | | | | | | | | | | | | | | | | | | X |
| Y | | | | | | | | | | | | | | | | | | | | | | | | | | Y |
| Z | | | | | | | | | | | | | | | | | | | | | | | | | | Z |

UNION TWP
ROCK COUNTY WI

IF AVAILABLE
ROCK COUNTY COORDINATES PREFERRED

North _____ Elev. _____

East _____

Hor. Datum _____ Vert. Datum _____

LATITUDE _____ ELLIPS. HT. _____

LONGITUDE _____

NAD83(91) _____ NETWORK ADJ. YR 2010

GPS (X) _____ TRAVERSE (X) X

BASED ON THE FOLLOWING CONTROL:

PLACE MONUMENT SYMBOL AT PROPER LOCATION ON ABOVE INDEX

CORNER MONUMENT

WITNESS MONUMENT

(a)

BEARINGS ARE BASED ON: ROCK COUNTY PROJECTION

FIELD BOOK _____ PAGE # _____

OR OBSERVATION SHEET _____

SHEET 1 OF 3

SHOW A PLAN VIEW DRAWING DEPICTING THE CORNER MONUMENT AND SURROUNDING PHYSICAL FEATURES, INCLUDING THE EXCAVATION AREA AND DEPTH.

PLANNING & ZONING COMMITTEE ADOPTED THIS FORM ON 12/2/1982

CORNER CODE T-1

UN594 W1/4CORSEC30

(B) Describe any record evidence, monument evidence, occupational evidence, testimonial evidence or any other material evidence you considered, and whether the monument was found or placed.

- 1833 BRINK PG 42 EAST BOUNDARY T4N R9E VAR 8-10E
NORTH ON EAST SIDE OF SECTION 36
2640.00 SET 1/4 SECTION POST IN PRAIRIE MADE MOUND
OF EARTH & SODS
5280.00 SET POST FOR CORNER TO SECTIONS 25 & 36
IN PRAIRIE MADE A MOUND LAND ROLLING
DRY PRAIRIE SECOND RATE COVERED WITH A
SHORT GRASS
- 1860 RUGER VOL 1 PG 148 SET HH 15X6X5 2636.7 TO SW COR
SEC 30, 2636.70 TO NW COR SEC 30, VAR 7-50 2980.89 TO
CEN OF SEC 30, VAR 7-50 5622.54 TO E 1/4 COR SEC30
- 1870 RUGER AUG REMON-87 SOUTH ON WEST LINE OF NW 1/4
SEC 30 ON A VAR 6-25; AT
2632.41 INTESECTED QUARTER LINE 4.95' WEST OF
QUARTER CORNER. FOUND HARD HEAD STONE
AT CORNER SET BY SELF IN A PREVIOUS SURVEY.
COR VAR 6-32
SOUTH ON WEST LINE OF SW 1/4 SEC 30
ON A VAR 6-32; AT
2632.41 INTERSECTED SOUTH BOUNDARY LINE AT
CORNER.
- 1906 KERCH VOL 3 PG 37 FD MON 2' UNDER GROUND 7.6' EAST OF
LINE BETWEEN SECTION CORNERS. STAKED OUT N/S RD 33'
EACH SIDE OF SEC LINE.
- 1971 BATTERMAN VOL 4 PG 265 DUG & FD CUT STONE DEEP WITH
5/8" PIN IN CAPPED PIPE OVER IT 3' DOWN. REFERENCED
SAME.
- 1971 BATTERMAN FB#152A PG 19 REFERENCED COR DUG & FD
CUT STONE WITH 5/8 PIN IN CAPPED 2" PIPE OVER IT. 3'
DEEP. FIELD BOOK CALLS FOR 86.76 FROM THE SE TO NE
REFERENCE PIPE, WHICH IS NOT SHOWN IN VOL 4.
- 1974 SCHROEDER CSM VOL 3 PG 356 STATES NOTHING ABOUT
MON. SET PIPE ON E/W CENTER OF SEC 30 @ 33.00. NORTH
ALONG SEC LINE 300.00 TO NW COR OF LOT. ANGLE 89-35
@ W 1/4 COR SEC 30 FROM NW TO E 1/4 CORNERS OF SEC
30.
- 1974 COMBS CSM VOL 4 PG 214 FD PK SOUTH 2638.10 TO ALUM
@ SW COR SEC 30
- 1976 TALARCZYK #6988 ALUM MON. E 1/4 COR SEC 36, T4N R9E.
ON LINE WITH E/W FENCE LINE ON WEST SIDE OF RD. 29.82'
EAST OF REROD @ FENCE INT ON WEST SIDE OF RD. CORNER
SET BY PROPORTIONATE MEASUREMENT & EXISTING
PHYSICAL EVIDENCE
- 1994 COMBS CSM VOL 17 PG 205 PK. NORTH 2636.66 TO
POLY MON @ NW COR SEC 30

FD PK, EAST REFERENCE PIPE, & SE REFERENCE PIPE. THE FD PK
IS IN HARMONY WITH THE REC DISTANCE TO THE FD REFERENCE
PIPES & KERCH'S CALL OF 7.6' EAST OF A LINE BETWEEN THE NW &
SW CORNERS OF SEC 30. MY DISTANCE IS 7.63'. ALSO IN HARMONY
WITH RECORD DISTANCES TO THE NW COR OF SEC 30. W 1/4 COR
SEC 30 IS NO-16-18E 912.02' OF THE E 1/4 COR SEC 36 T4N R9E.
THE E 1/4 COR SEC 36 IS 0.08' EAST OF A LINE BETWEEN THE SW &
W 1/4 COR SEC 30. THERE IS A LARGE CMP IN THE CONCRETE
BRIDGE. UNABLE TO DETERMINE BRIDGE POINTS.

SEAL
Donald Barnes
4/09/2012

SHEET 1 OF 3

CORNER CODE T-1

UN594

W1/4CORSEC30

C) Was the corner restored through acceptance of (1) an obliterated evidence location, or, (2) a found perpetuated location?

ACCEPTED PK AS THE PERPETUATED LOCATION OF THE FD CUT LS.

D) Describe any material discrepancy between the location of the corner as restored or reestablished and the location of that corner as previously restored or reestablished by distance and direction. Show the discrepancy on the plan view drawing under (a), above. Show the distances between the corner as previously restored or reestablished and (1) the corner as restored or reestablished, and (2) to at least 4 of the witness monuments shown on the drawing in (a), above.

NONE

(E) Was the corner reestablished through lost corner proportionate methods? If so, show the method, including the directions and distances to other public land survey corners used as evidence or used for proportioning the corner location.

NO

I, **Donald Barnes**, hereby certify that the corner location as identified by the corner code index was determined by me under my direction and control and that this U.S. Public Land Survey Monument Record is correct and complete to the best of my knowledge and belief.

SEAL

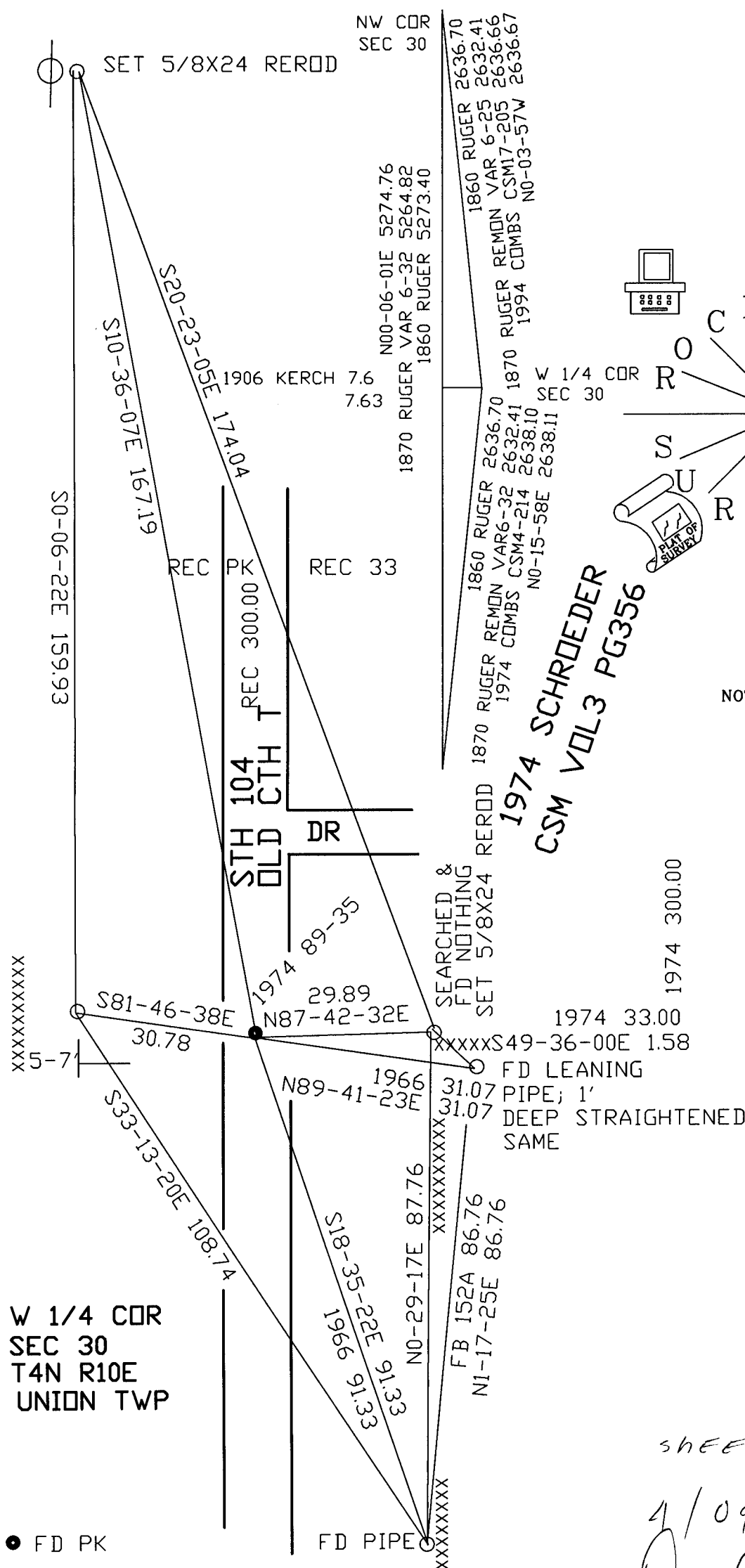
4/09/2012

SHEET 2 OF 3

Donald Barnes

CORNER CODE T-1

A.E. 7.08 REQUIREMENT

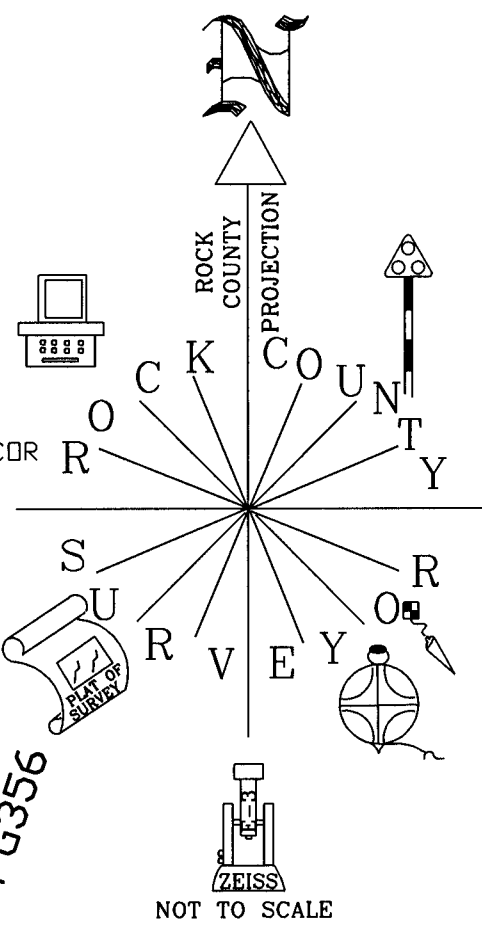


W 1/4 COR
SEC 30
T4N R10E
UNION TWP

● FD PK

OBSERVATION SHEET #381
1966 BATTERMAN VOL 4 PG 265 T-1

1974 SCHROEDER
CSM VOL 3 PG 356



SHEET 3 OF 3

4/09/2012
Donald Barnes