

Paper weight-110# (minimum)

Black nonfading ink required

U.S. PUBLIC LAND SURVEY MONUMENT RECORD

For Public Land Survey Corners In:

WI ADMINISTRATIVE CODE A-E 7.08 REQUIREMENT

T. 4 N. R. 10 E. 4th P.M.

REV 10/23/2004

USMONREC.DWG

CORNER CODE INDEX

UNION TWP

ROCK COUNTY WI

IF AVAILABLE

ROCK COUNTY COORDINATES PREFERRED

A	1	2	3	4	5	6	7	8	9	10	11	12	13	14	15	16	17	18	19	20	21	22	23	24	25	A
B																										B
C																										C
D																										D
E																										E
F																										F
G																										G
H																										H
J																										J
K																										K
L																										L
M																										M
N																										N
O																										O
P																										P
Q																										Q
R																										R
S																										S
T																										T
U																										U
V																										V
W																										W
X																										X
Y																										Y
Z																										Z

North _____ Elev. _____

East _____

Hor. Datum _____ Vert. Datum _____

LATITUDE _____ ELLIPS. HT. _____

LONGITUDE _____

NAD83(91) _____ NETWORK ADJ. YR 2010

GPS (X) _____ TRAVERSE (X) X

BASED ON THE FOLLOWING CONTROL:

PLACE MONUMENT SYMBOL AT PROPER LOCATION ON ABOVE INDEX

CORNER MONUMENT

WITNESS MONUMENT

(a)

BEARINGS ARE BASED ON: --- ROCK COUNTY PROJECTION ---

FIELD BOOK _____ PAGE # _____

OR OBSERVATION SHEET _____

SHEET 1 OF 4

SHOW A PLAN VIEW DRAWING DEPICTING THE CORNER MONUMENT AND SURROUNDING PHYSICAL FEATURES, INCLUDING THE EXCAVATION AREA AND DEPTH.

PLANNING & ZONING COMMITTEE ADOPTED THIS FORM ON 12/2/1982

CORNER CODE U-1

UN601 NWCORSEC31

(B) Describe any record evidence, monument evidence, occupational evidence, testimonial evidence or any other material evidence you considered, and whether the monument was found or placed.

- 1833 BRINK SEP 11 NORTH ON EAST SIDE SECTION 1
2640.00 ENTER PRAIRIE
1676.40 A SMALL SPRING RUNNING EAST
2640.00 SET 1/4 SECTION POST IN PRAIRIE AND MADE A MOUND & C?
5280.00 INTERSECTED SOUTH BOUNDARY OF T4 AS RUN OUT FROM SUGAR CREEK. SET POST FOR CORNER TO TOWNSHIPS 3 & 4 NORTH, RANGE 9 EAST IN PRAIRIE AND MADE A MOUND, & C? LAND ROLLING SECOND RATE PRAIRIE HAZEL GRASS & ? LAND ROLLING SECOND RATE PRAIRIE HALE GRASS, & C. SEPTEMBER 11TH 1833
- 1833 BRINK PG 42 EAST BOUNDARY T4N R9E VAR 8-10E NORTH ON EAST SIDE OF SECTION 36
2640.00 SET 1/4 SECTION POST IN PRAIRIE MADE MOUND OF EARTH & SODS
5280.00 SET POST FOR CORNER TO SECTIONS 25 & 36 IN PRAIRIE MADE A MOUND LAND ROLLING DRY PRAIRIE SECOND RATE COVERED WITH A SHORT GRASS
- 1833 BRINK OBS AT THIS CORNER VAR 8-10E WEST ON SOUTH SIDE SECTION 36 T4N R9E
2640.00 SET 1/4 SECTION POST IN PRAIRIE MADE MOUND & ?
2640.00 LEAVE PRAIRIE
5280.00 SET POST CORNER SECTIONS 35 & 36 BUR OAK 10 N74W 27.06'; BURR OAK 10 N17E 31.68' LAND ROLLING SECOND RATE DRY PRAIRIE GRASS
- 1833 HARRISON T4N T10E 4TH MER WEST BETWEEN 30 & 31
2640.00 QUARTER SEC COR. SET A POST & RAISED MOUND
5665.44 INT. RANGE LINE 9E 995.28' N OF COR OF RANGE 9 & 10 TOWN 3 & 4 SET POST & RAISED MOUND LAND ROLLING 1ST RATE PRAIRIE GROWTH GRASS & WEEDS
- 1860 RUGER VOL 1 PG 148 SET HARDHEAD 13X9X8 VAR 8-06 3053.82 TO S 1/4 COR SEC 30, VAR 8-06 5718.24 TO SE COR SEC 30, 2636.70 TO W 1/4 COR SEC 30
- 1870 RUGER AUG REMON-83 NORTH ON WEST LINE OF SW 1/4 SEC 31 ON A VAR 7-18 OFFSET WEST 6.93' OFFSET WEST 4.95 COULD FIND NO TRACE OF QUARTER CORNER. CONTINUED LINE ON SAME VARIATION. AT
5246.34 INTERSECTED NORTH BOUNDARY LINE 24.09' EAST OF CORNER FOUND HARD HEAD STONE AT CORNER SET BY SELF IN A PREVIOUS SURVEY COR VAR 7-41 ESTABLISHED QUARTER CORNER AT A POINT IN A TRUE LINE BETWEEN AND EQUI-DISTANT FROM THE NORTH WEST AND SOUTH WEST CORNERS OF SAID SECTION. IT BEING 2623.17 DISTANT FROM EACH.
- 1870 RUGER AUG REMON-84 EAST ON SOUTH LINE OF SW 1/4 SEC 30 ON A VAR 7-15; AT
3054.48 INTERSECTED QUARTER LINE AT QUARTER CORNER. FOUND HARD HEAD STONE SET BY SELF AT CORNER.
EAST ON SOUTH LINE OF SE 1/4 SEC 30 ON A VAR 7-15 AT
2628.45 INTERSECTED EAST BOUNDARY LINE AT CORNER

SHEET 1 OF 4

CORNER CODE V-1

SEAL
5115073
Donald Barnes
4/10/2012

UN601 NWCORSEC31

- 1870 RUGER AUG REMON-87 SOUTH ON WEST LINE OF NW 1/4 SEC 30 ON A VAR 6-25; AT
2632.41 INTERSECTED QUARTER LINE 4.95' WEST OF QUARTER CORNER. FOUND HARD HEAD STONE AT CORNER SET BY SELF IN A PREVIOUS SURVEY. COR VAR 6-32
SOUTH ON WEST LINE OF SW 1/4 SEC 30 ON A VAR 6-32; AT
2632.41 INTERSECTED SOUTH BOUNDARY LINE AT CORNER.
- 1906 KERCH VOL 3 PG 37 FD MON. STAKED OUT RD 33' EACH SIDE OF SEC LINE.
- 1966 COMBS, SHARKEY, M. LEE FB #135 PG 35 FD CUT STONE MONUMENT BROKEN OFF AT SW COR SEC 30, UNION TWP. SET 5/8" PIN & REFERENCED POINT.
- 1966 BATTERMAN VOL 4 PG 265 RE-FERENCED & SET ALUM MON.
- 1974 COMBS CSM VOL 4 PG 214 FD ALUM. N89-24-15E TO LS @ S 1/4 COR SEC 30 & NORTH 2638.10 TO FD PK @ W 1/4 COR SEC 30. N89-24-15E 40.00 TO PIN ON R/W LINE.
- 1996 BOWEDEN W-1 PK @ NE COR SEC 1 T3NR9E 301,091.116'; 400,275.428 NAVD 985.926 GPS. THE ABOVE LATITUDE & LONGITUDE WAS ACQUIRED FOR A GREEN COUNTY LAND INFORMATION PROJECT. GPS WAS USED. LAT. 42-46-12.777829; LONG 89-22-08.828543 [BARNES COMPUTED COUNTY COORDINATES]

CLOSELY EXAMING VOL 4 PG 265 [BELOIT SET] THE DIFFERENCE IN THE DATE OF 1966 IN THE CAPTION AND THE 3-19-74 BY THE DRAWING IS BECAUSE THE ORIGINAL DIMENSIONS WERE ERASED AND THE NEW MEASUREMENTS WERE ADDED.

AT SE COR SEC 36 T4N R9E MY COORDINATES ARE: 301,091.28; 400,275.26. @ NE COR SEC 1 T3NR9E BOWEDEN'S PK IS 301,091.12; 400,275.428 NAVD 985.93 GPS

@ SW COR SEC 30 FD ALUM 0.2' DEEP, NE, SE, & NW REFERENCE PINS. NW REF PIN WAS BENT. REMOVED & PLACED 5/8X24 REROD IN HOLE. MY COORDINATES ARE 302,005.44; 400,263.11.

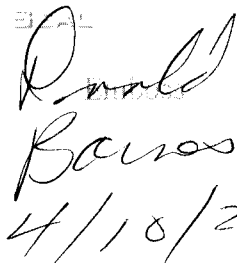
C) Was the corner restored through acceptance of (1) an obliterated evidence location, or, (2) a found perpetuated location?

ACCEPT FD ALUM. MON.

D) Describe any material discrepancy between the location of the corner as restored or reestablished and the location of that corner as previously restored or reestablished by distance and direction. Show the discrepancy on the plan view drawing under (a), above. Show the distances between the corner as previously restored or reestablished and (1) the corner as restored or reestablished, and (2) to at least 4 of the witness monuments shown on the drawing in (a), above.

(E) Was the corner reestablished through lost corner proportionate methods? If so, show the method, including the directions and distances to other public land survey corners used as evidence or used for proportioning the corner location.

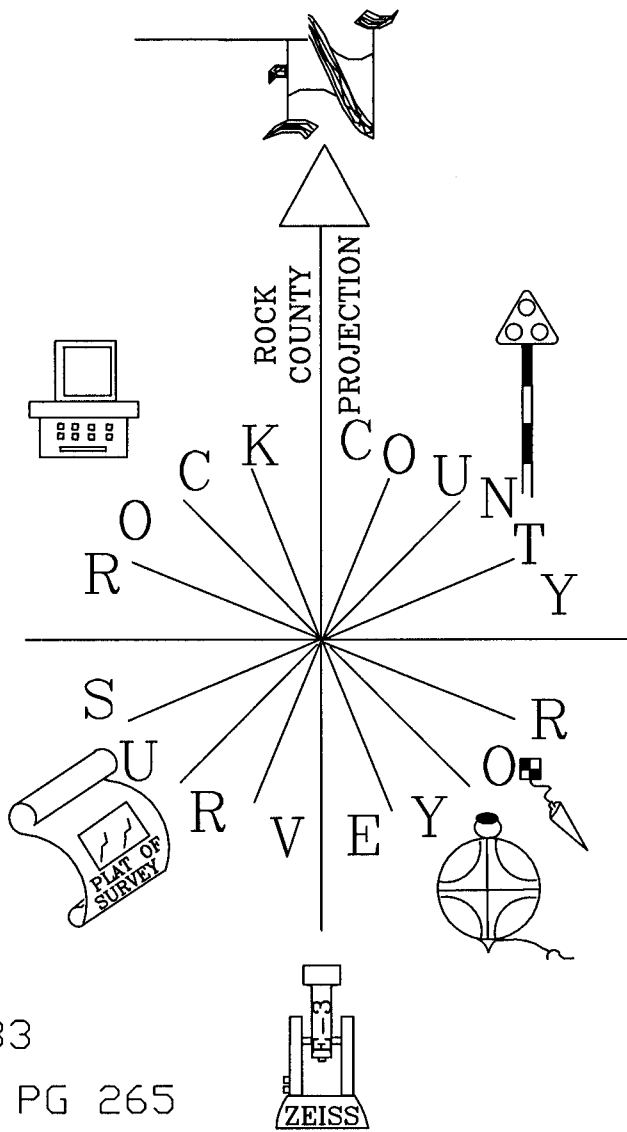
I, Donald Barnes, hereby certify that the corner location as identified by the corner code index was determined by me under my direction and control and that this U.S. Public Land Survey Monument Record is correct and complete to the best of my knowledge and belief.


4/18/2012

SHEET 2 OF 4

CORNER CODE V-1

A.E. 7.08 REQUIREMENT



302,005.43
400,263.11

OBSERVATION SHEET #383

1966 BATTERMAN VOL 4 PG 265

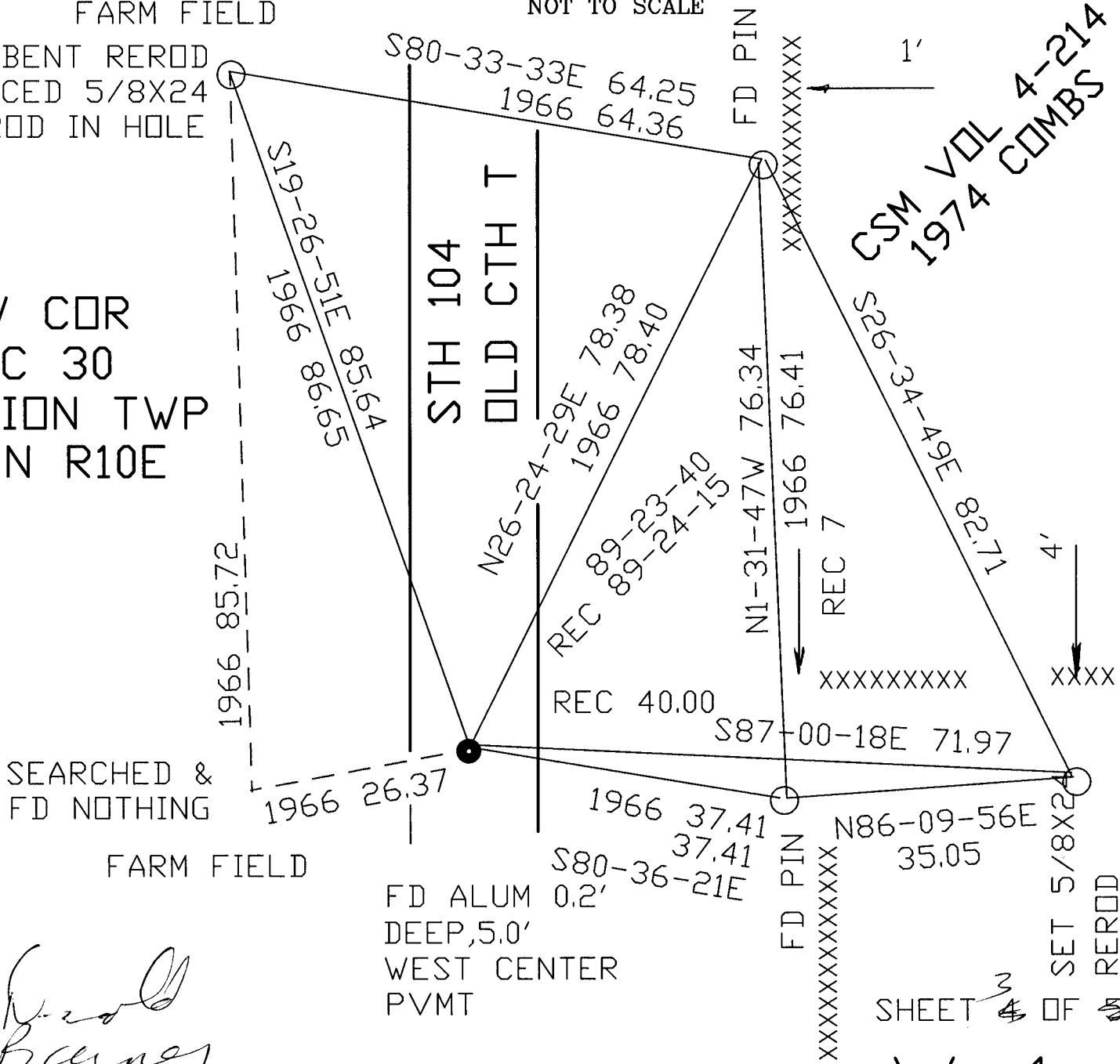
FARM FIELD

NOT TO SCALE

FD BENT REROD
PLACED 5/8X24
REROD IN HOLE

SW COR
SEC 30
UNION TWP
T4N R10E

CSM VOL 4-214
1974 COMBS



SEARCHED &
FD NOTHING

FARM FIELD

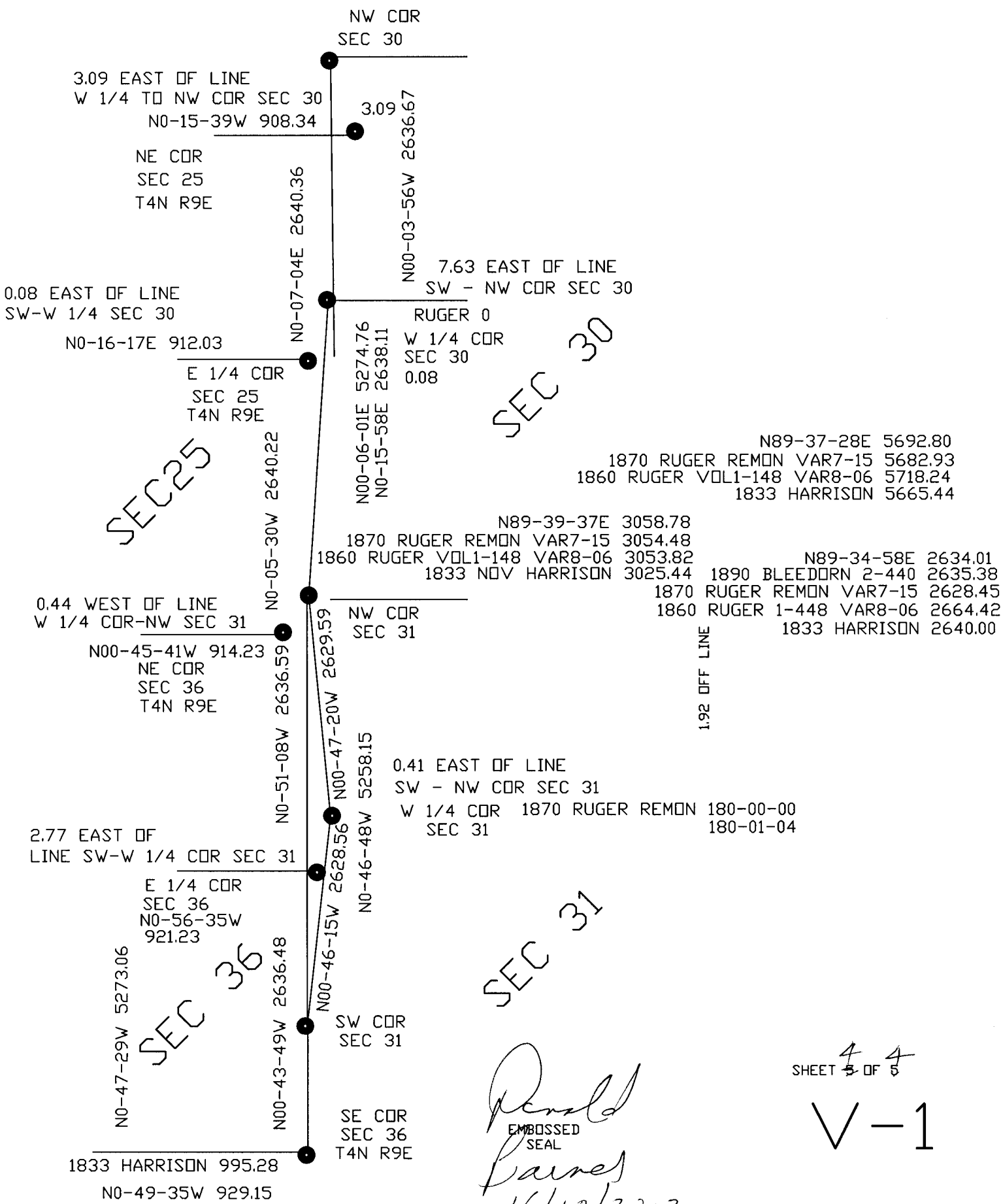
FD ALUM 0.2'
DEEP, 5.0'
WEST CENTER
PVMT

SET 5/8X24
REROD

Barnes
4/10/2012

SHEET 3 OF 34

V-1



Ronald
 Embossed
 Seal
 Barnes
 4/10/2012

SHEET 4 OF 4

V-1