

Paper weight-110# (minimum)

ack nonfading ink required

U.S. PUBLIC LAND SURVEY MONUMENT RECORD

For Public Land Survey Corners In:

WI ADMINISTRATIVE CODE A-E 7.08 REQUIREMENT

T.4 N. R. 10 E. 4th P.M.

REV 10/23/2004

USMONREC.DWG

CORNER CODE INDEX

UNION

TWP

ROCK COUNTY WI

IF AVAILABLE

ROCK COUNTY COORDINATES PREFERRED

| | | | | | | | | | | | | | | | | | | | | | | | | | |
|---|---|---|---|---|---|---|---|---|----|----|----|----|----|----|----|----|----|----|----|----|----|----|----|----|---|
| 1 | 2 | 3 | 4 | 5 | 6 | 7 | 8 | 9 | 10 | 11 | 12 | 13 | 14 | 15 | 16 | 17 | 18 | 19 | 20 | 21 | 22 | 23 | 24 | 25 | |
| A | | | | | | | | | | | | | | | | | | | | | | | | | A |
| B | | | | | | | | | | | | | | | | | | | | | | | | | B |
| C | | | | | | | | | | | | | | | | | | | | | | | | | C |
| D | | | | | | | | | | | | | | | | | | | | | | | | | D |
| E | | | | | | | | | | | | | | | | | | | | | | | | | E |
| F | | | | | | | | | | | | | | | | | | | | | | | | | F |
| G | | | | | | | | | | | | | | | | | | | | | | | | | G |
| H | | | | | | | | | | | | | | | | | | | | | | | | | H |
| J | | | | | | | | | | | | | | | | | | | | | | | | | J |
| K | | | | | | | | | | | | | | | | | | | | | | | | | K |
| L | | | | | | | | | | | | | | | | | | | | | | | | | L |
| M | | | | | | | | | | | | | | | | | | | | | | | | | M |
| N | | | | | | | | | | | | | | | | | | | | | | | | | N |
| O | | | | | | | | | | | | | | | | | | | | | | | | | O |
| P | | | | | | | | | | | | | | | | | | | | | | | | | P |
| Q | | | | | | | | | | | | | | | | | | | | | | | | | Q |
| R | | | | | | | | | | | | | | | | | | | | | | | | | R |
| S | | | | | | | | | | | | | | | | | | | | | | | | | S |
| T | | | | | | | | | | | | | | | | | | | | | | | | | T |
| U | | | | | | | | | | | | | | | | | | | | | | | | | U |
| V | | | | | | | | | | | | | | | | | | | | | | | | | V |
| W | | | | | | | | | | | | | | | | | | | | | | | | | W |
| X | | | | | | | | | | | | | | | | | | | | | | | | | X |
| Y | | | | | | | | | | | | | | | | | | | | | | | | | Y |
| Z | | | | | | | | | | | | | | | | | | | | | | | | | Z |

North _____ Elev. _____

East _____

Hor. Datum _____ Vert. Datum _____

LATITUDE _____ ELLIPS. HT. _____

LONGITUDE _____

NAD83(91) _____ NETWORK ADJ. YR 2010

GPS (X) _____ TRAVERSE (X) X

BASED ON THE FOLLOWING CONTROL:

PLACE MONUMENT SYMBOL AT PROPER LOCATION ON ABOVE INDEX

CORNER MONUMENT

WITNESS MONUMENT

(a)

BEARINGS ARE BASED ON: ROCK COUNTY PROJECTION

FIELD BOOK _____ PAGE # _____

OR OBSERVATION SHEET _____

SHEET 1 OF 2

SHOW A PLAN VIEW DRAWING DEPICTING THE CORNER MONUMENT AND SURROUNDING PHYSICAL FEATURES, INCLUDING THE EXCAVATION AREA AND DEPTH.

PLANNING & ZONING COMMITTEE ADOPTED THIS FORM ON 12/2/1982

CORNER CODE V-3

UN602 S1/4CORSEC30

(B) Describe any record evidence, monument evidence, occupational evidence, testimonial evidence or any other material evidence you considered, and whether the monument was found or placed.

- 1833 HARRISON T4N T10E 4TH MER WEST BETWEEN 30 & 31
2640.00 QUARTER SEC COR. SET A POST & RAISED
MOUND
5665.44 INT. RANGE LINE 9E 995.28' N OF COR OF
RANGE 9 & 10 TOWN 3 & 4 SET POST & RAISED
MOUND LAND ROLLING 1ST RATE PRAIRIE
GROWTH GRASS & WEEDS.
- 1860 RUGER VOL 1 PG 148 SET HH 18X9X5. VAR 8-06 2664.42
TO SE COR SEC 30 & VAR 8-06 3053.82 TO SW COR SEC
30. USED TO SUBDIVIDE SEC 30. [PROBABLY PRORATED
WITH ORIG SURVEY]
- 1870 RUGER AUG REMON-84 EAST ON SOUTH LINE OF SW 1/4
SEC 30 ON A VAR 7-15; AT
3054.48 INTERSECTED QUARTER LINE AT QUARTER
CORNER. FOUND HARD HEAD STONE SET BY SELF
AT CORNER.
EAST ON SOUTH LINE OF SE 1/4 SEC 30
ON A VAR 7-15 AT
2628.45 INTERSECTED EAST BOUNDARY LINE AT CORNER
- 1890 BLEEDORN VOL 2 PG 440 MON. USED TO SUBDIVIDE SEC 31.
VAR 5-05 2642.64 TO CENTER OF SEC 31 & 2635.38 TO NE
COR SEC 31
- 1974 COMBS CSM VOL 4 PG 214 LS S89-24-15W TO ALUM @ SW
COR SEC 30

FD CUT LIMESTONE @ GRADE.

C) Was the corner restored through acceptance of (1) an obliterated evidence location, or, (2) a found perpetuated location?

ACCEPTED FD CUT LIMESTONE. RUGER'S 1860 VOL 1 PG 148 VAR 8-06 2664.42 TO SE COR SEC 30 & VAR 8-06 3053.82 TO SW COR SEC 30 INDICATES HIS INTENT WAS TO ESTABLISH THE CORNER ON LINE WITH THE SE & SW CORNERS SEC 30 AT PRORATED DISTANCE. N89-34-58E 2634.01 TO SE COR SEC 30 & S89-39-38W 3058.78 TO SW COR SEC 30. THE L.S. IS SOUTH 1.92' OF A LINE BETWEEN THE SW & SE CORNERS OF SEC 30.

D) Describe any material discrepancy between the location of the corner as restored or reestablished and the location of that corner as previously restored or reestablished by distance and direction. Show the discrepancy on the plan view drawing under (a), above. Show the distances between the corner as previously restored or reestablished and (1) the corner as restored or reestablished, and (2) to at least 4 of the witness monuments shown on the drawing in (a), above.

(E) Was the corner reestablished through lost corner proportionate methods? If so, show the method, including the directions and distances to other public land survey corners used as evidence or used for proportioning the corner location. YES, BY RUGER

I, Donald Barnes, hereby certify that the corner location as identified by the corner code index was determined by me under my direction and control and that this U.S. Public Land Survey Monument Record is correct and complete to the best of my knowledge and belief.

SEAL
Donald Barnes

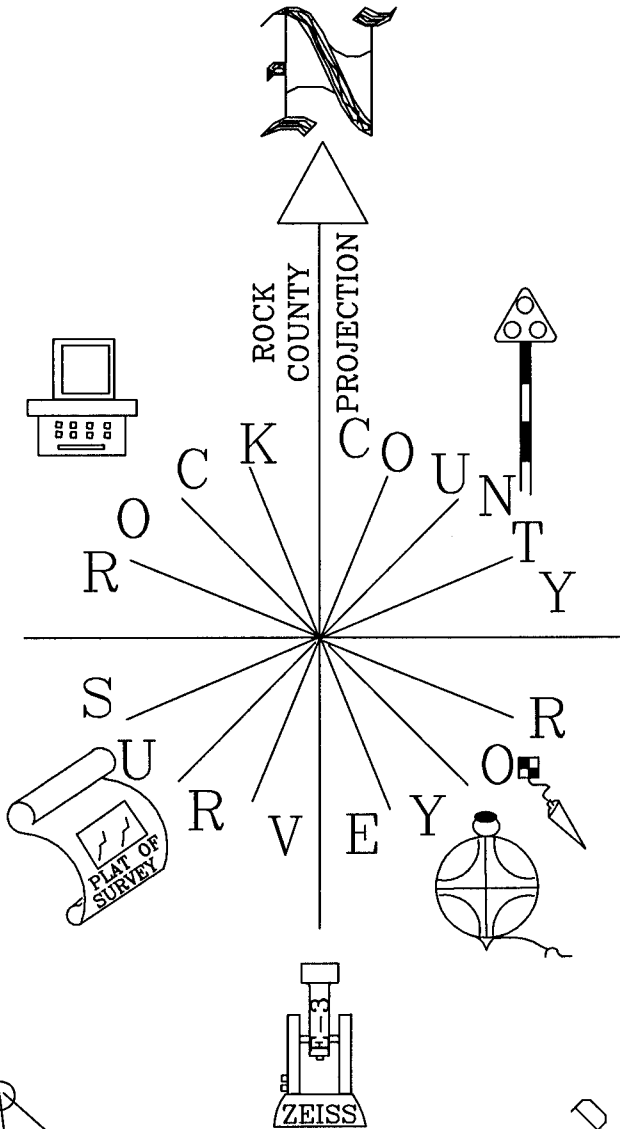
SHEET 1 OF 2

4 / 09 / 2012

A.E. 7.08 REQUIREMENT

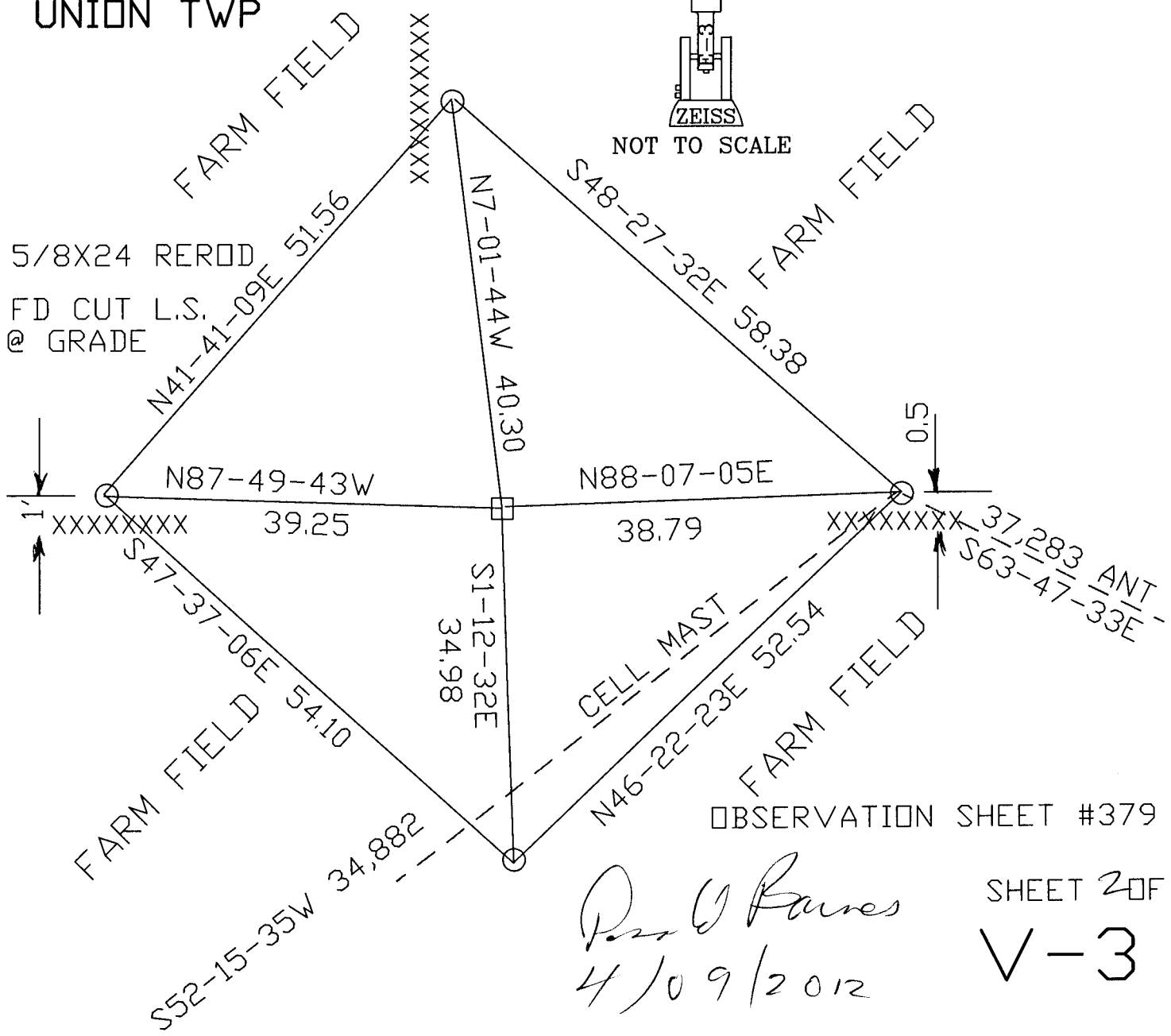
CORNER CODE V-3

N 1/4 COR
 SEC 31
 T4N R10E
 UNION TWP



NOT TO SCALE

- 5/8X24 REROD
- FD CUT L.S. @ GRADE



OBSERVATION SHEET #379

P. O. Barnes
 4/09/2012

SHEET 2 OF 2
 V-3