

Paper weight-110# (minimum)

Black nonfading ink required

U.S. PUBLIC LAND SURVEY MONUMENT RECORD

For Public Land Survey Corners In:
T. 4 N. R. 10 E. 4th P.M.
CORNER CODE INDEX

WI ADMINISTRATIVE CODE A-E 7.08 REQUIREMENT
REV 10/23/2004 USMONREC.DWG

UNION TWP

ROCK COUNTY WI

IF AVAILABLE
ROCK COUNTY COORDINATES PREFERRED

A	1	2	3	4	5	6	7	8	9	10	11	12	13	14	15	16	17	18	19	20	21	22	23	24	25	A
B																										B
C																										C
D																										D
E																										E
F																										F
G																										G
H																										H
J																										J
K																										K
L																										L
M																										M
N																										N
O																										O
P																										P
Q																										Q
R																										R
S																										S
T																										T
U																										U
V																										V
W																										W
X																										X
Y																										Y
Z																										Z

North _____ Elev. _____

East _____

Hor. Datum _____ Vert. Datum _____

LATITUDE _____ ELLIPS. HT. _____

LONGITUDE _____

NAD83(91) _____ NETWORK ADJ. YR 2010

GPS (X) _____ TRAVERSE (X) X

BASED ON THE FOLLOWING CONTROL:

PLACE MONUMENT SYMBOL **◆** AT PROPER LOCATION ON ABOVE INDEX

◆ CORNER MONUMENT

○ WITNESS MONUMENT

(a) BEARINGS ARE BASED ON: _____ ROCK COUNTY PROJECTION

FIELD BOOK _____ PAGE # _____
OR OBSERVATION SHEET _____

SHEET 1 OF 3

SHOW A PLAN VIEW DRAWING DEPICTING THE CORNER MONUMENT AND SURROUNDING PHYSICAL FEATURES, INCLUDING THE EXCAVATION AREA AND DEPTH.

PLANNING & ZONING COMMITTEE ADOPTED THIS FORM ON 12/2/1982

CORNER CODE A-3

UN502 N1/4CORSEC6

(B) Describe any record evidence, monument evidence, occupational evidence, testimonial evidence or any other material evidence you considered, and whether the monument was found or placed.

1833 BRINK SOUTH BOUNDARY OF T5N R10E WEST ON SOUTH
SIDE SECTION 31

186.12 BURR OAK 14

2640.00 SET QUARTER SECTION POST BURR OAK 12
N83E 144.54'; BURR OAK 16 N43 1/2W 49.5'

2962.08 W. OAK 16

5602.08 INTERSECTED RANGE LINE 957.00' NORTH OF
CORNER SECTIONS 1 & 12 T4N R9E SET POST
AT INTERSECTION FOR CORNER TO T4 & 5N R10E
BURR OAK 12 N34E 5.28'; BURR OAK 16 S65E
81.84' LAND & C SAME.

1856 CHURCH VOL 1 PG 83 STATES NOTHING ABOUT MON. DANE
COUNTY LINE VARIATION 5-40/60. FROM N 1/4 COR OF SEC
6 TO THE FOLLOWING CORNERS: 1482.36 TO N 1/16 COR OF
NW 1/4 SEC 6, 2802.36 TO NW COR SEC 6, 2640.00 TO NE
COR SEC 6, 1281.06 TO E 1/16TH OF NW 1/4 COR SEC 6. BR.
O 18 S42E 27.06' VARIATION 5-40; BR. O 14 S47-30W 60.72'

1870 RUGER AUG REMON-123 SEPTEMBER 9, 1870

COMMENCED AT NW CORNER SECTION 6 FOUND
OLD STAKE AT CORNER. ALSO FOUND STUMP OF
NORTH BEARING TREE AND REMAINS OF STUMP OF
SOUTH BEARING TREE. EAST ON NORTH LINE OF
NW 1/4 SEC 6 ON A VAR 5-40; OFFSET NORTH
44.88' INTERSECTED QUARTER LINE OF SECTION
31 T5 R10 AT QUARTER CORNER. COR VAR 6-38
CONTINUED EAST ON NORTH LINE OF NE QUARTER
OF SECTION 6 ON A VAR 7-15; OFFSET SOUTH
38.94' AT

5151.96 INTERSECTED EAST BOUNDARY LINE 26.4'
SOUTH OF CORNER COR. VAR 6-59'
ESTABLISHED NORTH QUARTER CORNER SEC 6
ON TOWN LINE, AND AT A POINT 2641.32 EAST
OF NW CORNER OF SAID SECTION AND 2510.64
WEST OF NE CORNER OF SAID SECTION.

19?? UNK #3148 S89-21-59W 2953.42 FROM S 1/4 COR SEC 31
T5NR10E TO NW COR SEC 6, N87-58-48E 2216.75 FROM S
1/4 COR SEC 31 TO NE COR SEC 6, N87-54-58E 443.14
FROM NE COR SEC 6 TO SE COR SEC 31, N4-27-12W
2670.06 FROM SE COR SEC 31 TO E 1/4 COR SEC 31, &
2659.89 FROM S 1/4 TO SE COR OF SEC 31.

1974 DOYLE #5086 TIE SHEET N89-50-21W 2953.4 TO SW COR
SEC 31, N89-49-29E 1554.57 TO NE COR SEC 6 T4N R10E.
I SET A DANE COUNTY ALUM. MON AT THE S 1/4 COR OF
SEC 31 ON THE BASIS OF THE INFORMATION GIVEN IN DANE
COUNTY SURVEYOR'S RECORD BOOK #5 PAGE 205 AND A
LAND SURVEY MADE FOR CSM #1522. THE MONUMENT WAS
SET AT THE SOUTH END OF A N-S FENCE LINE AND ABOUT 8
INCHES NORTH OF AN E-W FENCE LINE. NO EVIDENCE OF
ANY PREVIOUS CORNER MONUMENT WAS FOUND. SEE DANE
CO. FIELD BOOK 523 PG 19-22. ALSO SURVEY PLAT #8638-
L IN DANE CO. SURVEYOR'S OFFICE FIELD.

SEAL

EMJ0000

Donald Bases

NOV 21, 2011

SHEET 1 OF 3
CORNER CODE **A-3**

UN502 N1/4CORSEC6

DUG A VERY LARGE HOLE WITH THE PUBLIC WORKS BACKHOE. FOUND CUT LIMESTONE ON WESTERN LIMITS OF HOLE. TOP 24" OF LIMESTONE WAS PREVIOUSLY BROKEN OFF AND LAYING UNDER THE SUBSURFACE. I FOUND THE BASE ABOUT 24" DEEP. I PLACED TWO MAGNETS ON THE EAST & TWO MAGNETS ON THE WEST SIDE OF THE BASE. I PLACED AN 18" CAST IRON MONUMENT ON THE BASE WITH A CARSONITE POST ON THE NORTH SIDE. THE MONUMENT IS 1' NORTH OF THE E/W FENCE LINE. I REMOVED THE BROKEN TOP PART OF THE CUT LIMESTONE.

C) Was the corner restored through acceptance of (1) an obliterated evidence location, or, (2) a found perpetuated location?

ACCEPTED THE FOUND CUT LIMESTONE, WHICH WAS CUT BY ILLINOIS PRISONERS AND SHIPPED BY RAIL TO ROCK COUNTY. DID NOT ACCEPT NOR REJECT THE FD ALUM. MON. @ THE S 1/4 COR SEC 31 T5N R10E.

USING THE ORIG GOV PLAT DISTANCES ALONG THE NORTH LINE OF SEC 6, THE PRORATION OF RUGER'S DISTANCE OF 5,151.96 FROM THE NW TO NE CORNERS OF SEC 6, THE PLAT DISTANCES OF [2640+1320+1457.28] 5417.28 EQUALS 2641.26, AND THE ORIG PLAT DISTANCE OF 2777.28 FROM THE NW TO N 1/4 COR SEC 6 EQUALS 2641.26. THIS IS IN HARMONY WITH RUGER'S CALL OF 2641.32 FROM THE NW TO N 1/4 COR SEC 6. IT IS NB9-00-13E 2644.87 FROM THE NW TO N 1/4 COR SEC 6. WHICH IS IN HARMONY WITH RUGER'S RECORD DISTANCE.

D) Describe any material discrepancy between the location of the corner as restored or reestablished and the location of that corner as previously restored or reestablished by distance and direction. Show the discrepancy on the plan view drawing under (a), above. Show the distances between the corner as previously restored or reestablished and (1) the corner as restored or reestablished, and (2) to at least 4 of the witness monuments shown on the drawing in (a), above.

THE ORIGINAL GOVERNMENT SURVEYOR NEVER ESTABLISHED THE 1/4 CORNERS ON THE DANE/ROCK COUNTY LINE.

(E) Was the corner reestablished through lost corner proportionate methods? If so, show the method, including the directions and distances to other public land survey corners used as evidence or used for proportioning the corner location. NO

I, **Donald Barnes**, hereby certify that the corner location as identified by the corner code index was determined by me under my direction and control and that this U.S. Public Land Survey Monument Record is correct and complete to the best of my knowledge and belief.

SEAL
Donald Barnes
NOV 21, 2011

SHEET 2 OF 3

CORNER CODE **A-3**

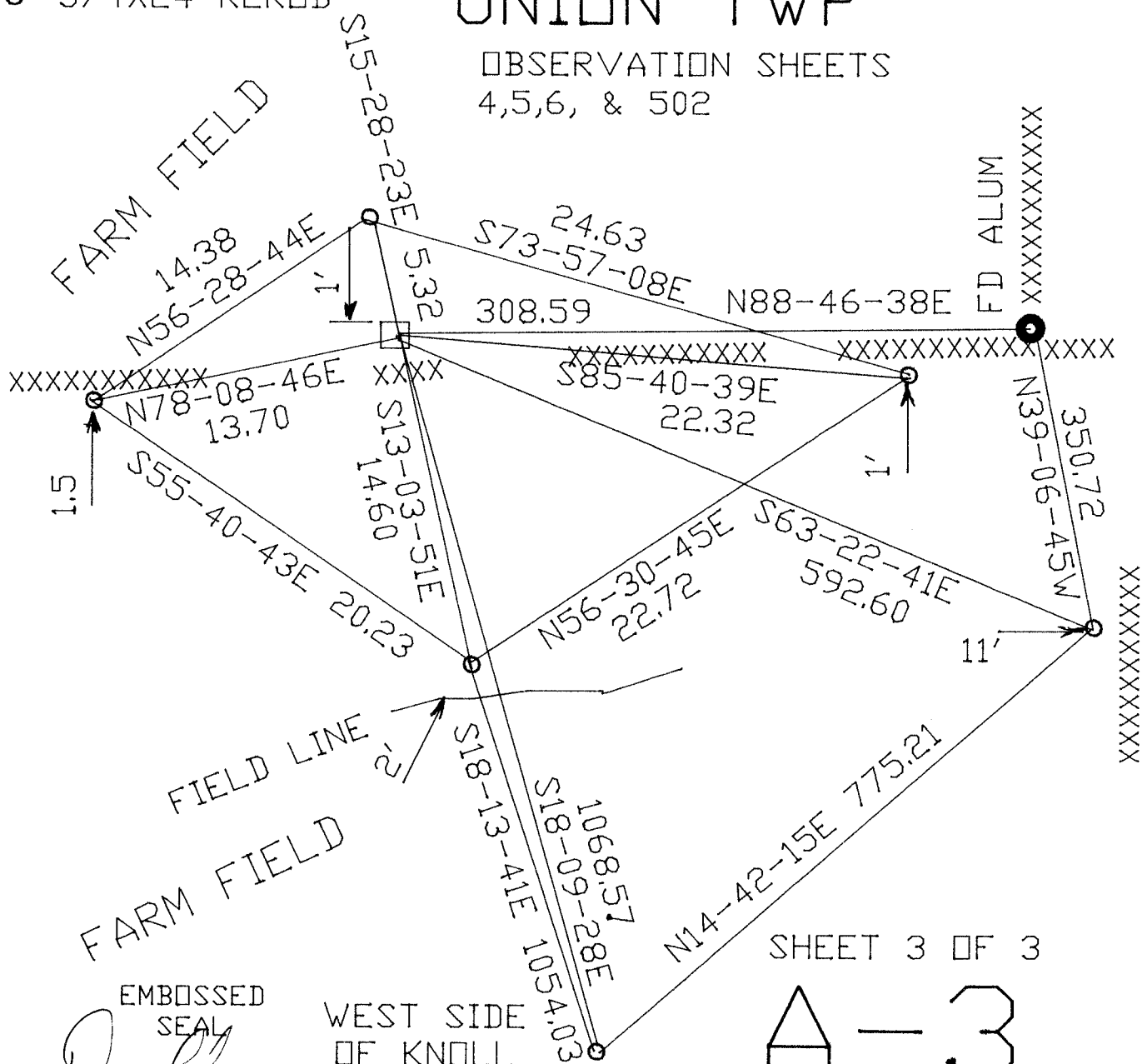
A.E. 7.08 REQUIREMENT

N 1/4 COR
 SEC 6
 T4N R10E
 UNION TWP

OBSERVATION SHEETS
 4,5,6, & 502

□ CI ON TOP
 OF CUT L.S.
 CARSONITE ON
 NORTH SIDE

○ 3/4X24 REROD



SHEET 3 OF 3

A-3

EMBOSSED
 SEAL

David Barnes

Nov 22, 2011