

Paper weight-110# (minimum)

Black nonfading ink required

U.S. PUBLIC LAND SURVEY MONUMENT RECORD

For Public Land Survey Corners In:
T. 4 N. R. 10 E. 4th P.M.
CORNER CODE INDEX

WI ADMINISTRATIVE CODE A-E 7.08 REQUIREMENT
REV 10/23/2004 USMONREC.DWG

UNION TWP
ROCK COUNTY WI

IF AVAILABLE
ROCK COUNTY COORDINATES PREFERRED

A	1	2	3	4	5	6	7	8	9	10	11	12	13	14	15	16	17	18	19	20	21	22	23	24	25	A		
B		6					5						4					3								2	B	
C																											1	C
D																												D
E																												E
F																												F
G																												G
H																												H
J																												J
K																												K
L																												L
M																												M
N																												N
O																												O
P																												P
Q																												Q
R																												R
S																												S
T																												T
U																												U
V																												V
W																												W
X																												X
Y																												Y
Z																												Z

North _____ Elev. _____

East _____

Hor. Datum _____ Vert. Datum _____

LATITUDE _____ ELLIPS. HT. _____

LONGITUDE _____

NAD83(91) _____ NETWORK ADJ. YR 2010

GPS (X) _____ TRAVERSE (X) X

BASED ON THE FOLLOWING CONTROL:

◆ CORNER MONUMENT

○ WITNESS MONUMENT

BEARINGS ARE BASED ON: ROCK COUNTY PROJECTION

FIELD BOOK _____ PAGE # _____
OR OBSERVATION SHEET _____

SHEET 1 OF 1

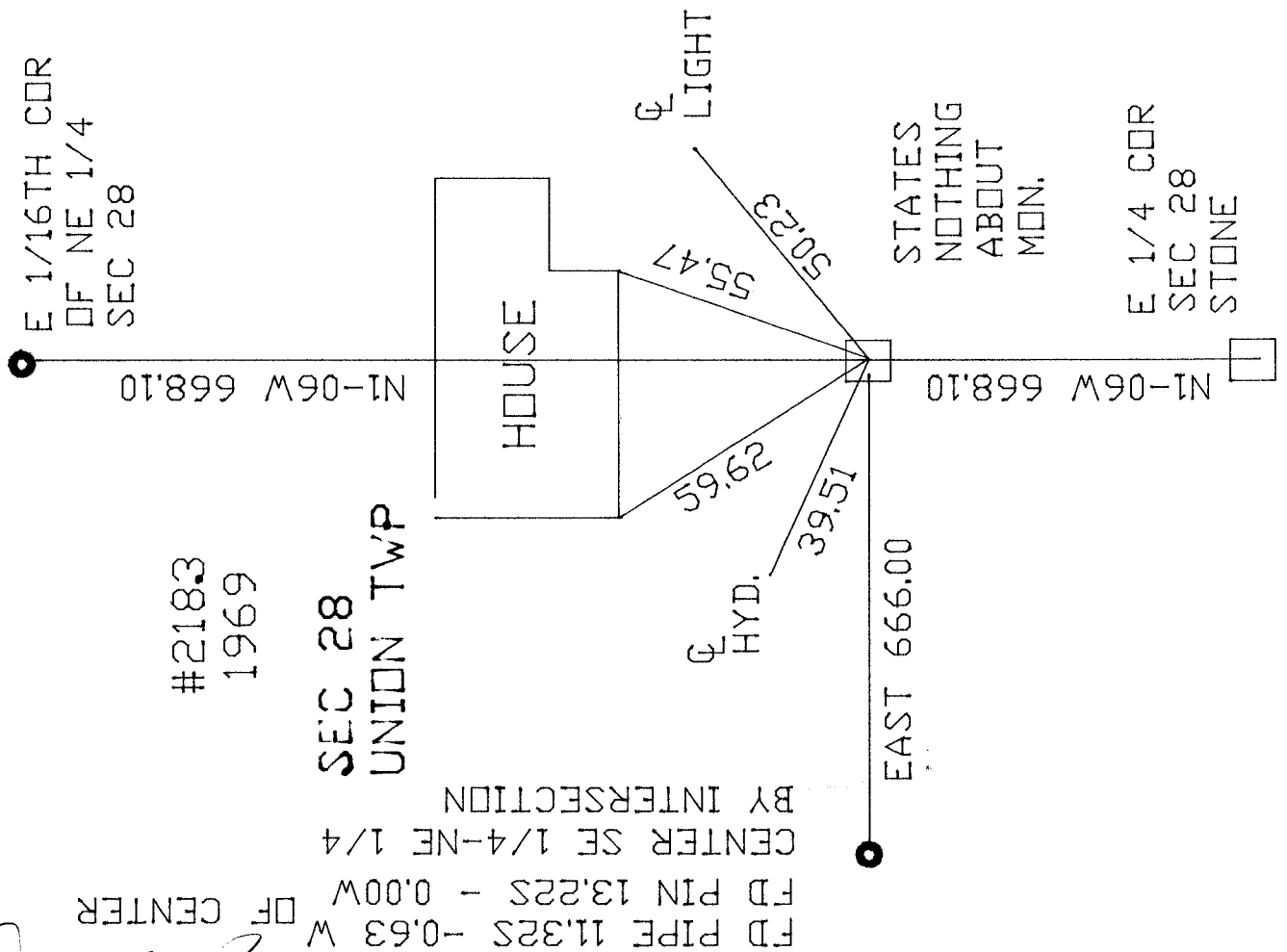
SHOW A PLAN VIEW DRAWING DEPICTING THE CORNER MONUMENT AND SURROUNDING PHYSICAL FEATURES, INCLUDING THE EXCAVATION AREA AND DEPTH.

PLANNING & ZONING COMMITTEE ADOPTED THIS FORM ON 12/2/1982

CORNER CODE S/T 13

IN JENSEN'S 1969 SURVEY OF CONTINENTAL MANOR OF EVANSVILLE INC. PART OF OUTLOT 14, SHEET #6 ASSESSOR'S PLAT OF EVANSVILLE ROCK COUNTY SURVEYOR'S MAP #2183, HE SHOWS MANY TIES FOR PLS CORNERS IN SECTION 28. THE TIE IS FROM THIS DOCUMENT.

FEBRUARY 22, 2010



Donald Barnes
2/22/2010

S/T 13