

Paper weight-110# (minimum)

Black nonfading ink required

U.S. PUBLIC LAND SURVEY MONUMENT RECORD

For Public Land Survey Corners In:
T. 4 N. R. 10 E. 4th P.M.
CORNER CODE INDEX

WI ADMINISTRATIVE CODE A-E 7.08 REQUIREMENT
REV 10/23/2004 USMONREC.DWG

UNION TWP

ROCK COUNTY WI

IF AVAILABLE
ROCK COUNTY COORDINATES PREFERRED

A	1	2	3	4	5	6	7	8	9	10	11	12	13	14	15	16	17	18	19	20	21	22	23	24	25	A
B		6				5				4				3				2				1				B
C																										C
D																										D
E																										E
F																										F
G																										G
H																										H
I																										I
J																										J
K																										K
L																										L
M																										M
N																										N
O																										O
P																										P
Q																										Q
R																										R
S																										S
T																										T
U																										U
V																										V
W																										W
X																										X
Y																										Y
Z																										Z

North _____ Elev. _____

East _____

Hor. Datum _____ Vert. Datum _____

LATITUDE _____ ELLIPS. HT. _____

LONGITUDE _____

NAD83(91) _____ NETWORK ADJ. YR 2010 _____

GPS (X) _____ TRAVERSE (X) X

BASED ON THE FOLLOWING CONTROL:

PLACE MONUMENT SYMBOL **◆** AT PROPER LOCATION ON ABOVE INDEX

◆ CORNER MONUMENT **○** WITNESS MONUMENT

BEARINGS ARE BASED ON: ROCK COUNTY PROJECTION

FIELD BOOK _____ PAGE # _____
OR OBSERVATION SHEET _____

SHEET 1 OF 4

SHOW A PLAN VIEW DRAWING DEPICTING THE CORNER MONUMENT AND SURROUNDING PHYSICAL FEATURES, INCLUDING THE EXCAVATION AREA AND DEPTH.

PLANNING & ZONING COMMITTEE ADOPTED THIS FORM ON 12/2/1982

CORNER CODE E-5

UN523 NECORSEC7

(B) Describe any record evidence, monument evidence, occupational evidence, testimonial evidence or any other material evidence you considered, and whether the monument was found or placed.

1833 HARRISON (NOV 10TH) T4N T10E 4TH MER NORTH BET SECS 7 & 8

643.5 TO THE ROAD E & W
2640.00 QUARTER SEC COR {WO 19 N55W 64.68; W.O. 12 N25W 106.92' W.O. 19 & WO 12} MARKED
2310.00 ENTERED MARSH CRS S.E.
4950.00 LEAVE MARSH & ENTER TIMBER
5280.00 CORNER TO SECS 5,6,7,8 {BURR O 15 S85W 213.84'; BURR O 12 N83W 172.26' LAND 1ST 1/2 SAME AS BEFORE 2ND 1/2 LEVEL & WET 3RD RATE BEING MOSTLY MARSH

1833 (NOV) HARRISON (NOV 9) T4N R10E 4TH MER. EAST ON RAND. BET. 5 & 8

2640.00 TEMPY 1/4 SEC COR
5365.14 INT E BDY 66.00' N OF P LAND ROLLING 2ND RATE TIMBER BURR & W.O. GROWTH GRASS & WEEDS
WEST COR WEST BET 5 & 8
2682.57 QUARTER SEC COR. {BURR O 12 N34E 66.00"; BURR O 11 S45W 133.98' BURR O 12 & BURR O 11} MARKED

5365.14 INT. SEC COR

1833 HARRISON (NOV 10TH) T4N T10E 4TH MER NORTH BET SECS 5 & 6

1582.02 BURR O 12
2640.00 QUARTER SEC. CO {BURR O 10 S74W 9.24'; BURR O 12 N53E 23.76' BURR O 10 & BURR O 12} MARKED
5205.42 INT. N. BDY 184.80 W OF P BURR O 12 S68W 39.60'; BURR O 14 S40E 59.40' LAND SAME AS BEFORE

1833 HARRISON (NOV 10TH) T4N T10E 4TH MER WEST BETWEEN SECS 6 & 7

990.0 MARSH
1650.0 LEFT ???
1828.20 WO 12
2640.00 QUARTER SEC COR {WO 12 S32E 27.72'; WO 18 N79W 21.78' WO 12 & WO 18} MARKED
5342.70 INT RANGE LINE OF RANGE 9E SET COR TO SECS 6 & 7 {BURR O 12 N34E 27.72'; BURR O S23E 31.02' LAND ROLLING 2ND RATE WITH WO & BURR O TIMBER GROWTH HAZEL, GRASS, & WEEDS NOV 11TH 1833

1856 CHURCH VOL 1 PG 61 WIT TREES INCORRECT TOOK OTHERS BR. O 24 S58 1/2E 62.7'; BR. O 24 N58E 62.04' 2617.56 TO S 1/4 COR SEC 5

1870 RUGER AUG REMON-121 SOUTH ON WEST LINE OF NW 1/4 SEC 8 ON A VAR 5-05; AT

2657.82 INTERSECTED QUARTER LINE 43.56' EAST OF QUARTER CORNER. FOUND OLD STAKE AT CORNER ALSO FOUND STUMPS OF BOTH BEARING TREES. COR VAR 4-09


SOUTH ON WEST LINE OF SW 1/4 SEC 8 ON A VAR 8-00; OFFSET EAST 13.20' AT

2644.62 INTERSECTED SOUTH BOUNDARY LINE 32.34' EAST OF CORNER COR VAR 7-34

1870 RUGER AUG REMON-119 SOUTH ON WEST LINE OF NW 1/4 SEC 5 ON A VAR 6-45; OFFSET EAST 11.22' AT

DEAL
Ronald
Barnes

- 2544.46 INTERSECTED QUARTER LINE 20.13' EAST OF QUARTER CORNER. FOUND EAST BEARING TREE AND REMAINS OF STUMP OF WEST BEARING TREE. ESTABLISHED CORNER FROM THEM. COR VAR 6-34'
SOUTH ON WEST LINE OF SW 1/4 SEC 5 ON A VAR 6-30; OFFSET WEST 8.58' AT
- 2665.74 INTERSECTED SOUTH BOUNDARY LINE 27.72' WEST OF CORNER. FOUND OLD STAKE AT CORNER. COR VAR 6-55
- 1870 RUGER AUG REMON-124 EAST ON SOUTH LINE OF SW 1/4 SEC 6 ON A VAR 7-27; OFFSET NORTH 18.48' AT
- 2720.52 INTERSECTED QUARTER LINE 36.30' NORTH OF QUARTER CORNER. FOUND OLD STAKE AT CORNER. COR VAR 7-04
EAST ON SOUTH LINE OF SE 1/4 SEC 6 ON A VAR 7-10; AT
- 2648.58 INTERSECTED EAST BOUNDARY LINE AT CORNER. EDWARD RUGER COUNTY SURVEYOR.
- 1870 RUGER AUG REMON-120 SEPTEMBER 8, 1870
WEST ON NORTH LINE OF NE 1/4 SEC 8 ON A VAR 7-15; OFFSET SOUTH 16.50' AT
- 2808.30 INTERSECTED QUARTER LINE 11.88' SOUTH OF QUARTER CORNER. FOUND OLD STAKE AT CORNER. ALSO FOUND STUMP OF NORTH BEARING TREE AND REMAINS OF STUMP OF SOUTH BEARING TREE. COR. VAR 7-21
WEST ON NORTH LINE OF NW 1/4 SEC 8 ON A VAR 8-30; OFFSET SOUTH 12.54' OFFSET NORTH 50.16' AT
- 2603.04 INTERSECTED WEST BOUNDARY LINE 27.06' SOUTH OF COR. COR VAR 7-06
- 1870 RUGER VOL 2 PG 50 STONE MON. SET BY SELF
- 1904 KERCH VOL 3 PG 21 MONUMENT UNDER ROAD & SET HH OVER STONE. 2657.4 TO MON @ N 1/4 COR SEC 7 & 2656.2 TO MON @ E 1/4 COR SEC 7
- 1976 BARNES VOL 5 PG 173 8' DEEP FOUND CUT LIMESTONE MON. PLACED BROKEN SHOVEL BY MON. REF SAME. ON WEST PVMT EDGE @ CURVE. SET PK 10.00 TO NE & EAST
- 1978 BARNES VOL 5 PG 407 SET ALUM MON FROM PK TIES
- 1978 SCHNEEBERGER CSM VOL 8 PG 23 ALUM. MON. USED ALUM MON @ W 1/4 COR SEC 5
- 1982 BARNES VOL 6 PG 273 FOUND ALUM MON. SHOWS REC. DISTANCES
- 1996 COMBS CSM VOL 19 PG 470 STATES NOTHING ABOUT MON. 2672.55 TO ALUM @ E 1/4 COR SEC 6
- 1996 COMBS CSM VOL 19 PG 473 ALUM MON. 2672.55 TO ALUM @ E 1/4 COR SEC 6
- 2001 COMBS CSM VOL 24 PG 377 ALUM. MON. 2672.55 TO ALUM @ E 1/4 COR SEC 6
- 2002 LATHROP CSM VOL 25 PG 355 ALUM 2672.21 (REC 2672.55) TO ALUM @ E 1/4 COR SEC 6
- 2008 COMBS BK 32 PG 846 "DREAMVIEW LE - RISCH ESTATES" ALUM. MON. 2672.53 TO ALUM @ E 1/4 COR SEC 6
- 2009 COMBS CSM VOL 33 PG 163 ALUM. MON. 2672.55 TO ALUM @ E 1/4 COR SEC 6

SEAL

 Kane

Oct 24, 2011

UN523 NECORSEC7

FD ALUM. MON ON WEST PVMT EDGE. 0.2' DEEP. ALSO FD WESTERN REF. PIPE. REFERENCE MONUMENTS ON EAST SIDE OF ROAD WERE PROBABLY DESTROYED BY REMOVAL OF FENCE & INSTALLATION OF LAWN FOR NEW HOUSE.

C) Was the corner restored through acceptance of (1) an obliterated evidence location, or, (2) a found perpetuated location?

ACCEPTED FD ALUM., WHICH PERPETUATES FD CUT LIMESTONE.

D) Describe any material discrepancy between the location of the corner as restored or reestablished and the location of that corner as previously restored or reestablished by distance and direction. Show the discrepancy on the plan view drawing under (a), above. Show the distances between the corner as previously restored or reestablished and (1) the corner as restored or reestablished, and (2) to at least 4 of the witness monuments shown on the drawing in (a), above.

NONE

(E) Was the corner reestablished through lost corner proportionate methods? If so, show the method, including the directions and distances to other public land survey corners used as evidence or used for proportioning the corner location.

NO

I, **Donald Barnes**, hereby certify that the corner location as identified by the corner code index was determined by me under my direction and control and that this U.S. Public Land Survey Monument Record is correct and complete to the best of my knowledge and belief.

BEAL
H. Donald
Barnes
OCT 24, 2011

SHEET 3 OF 4

CORNER CODE **E-5**

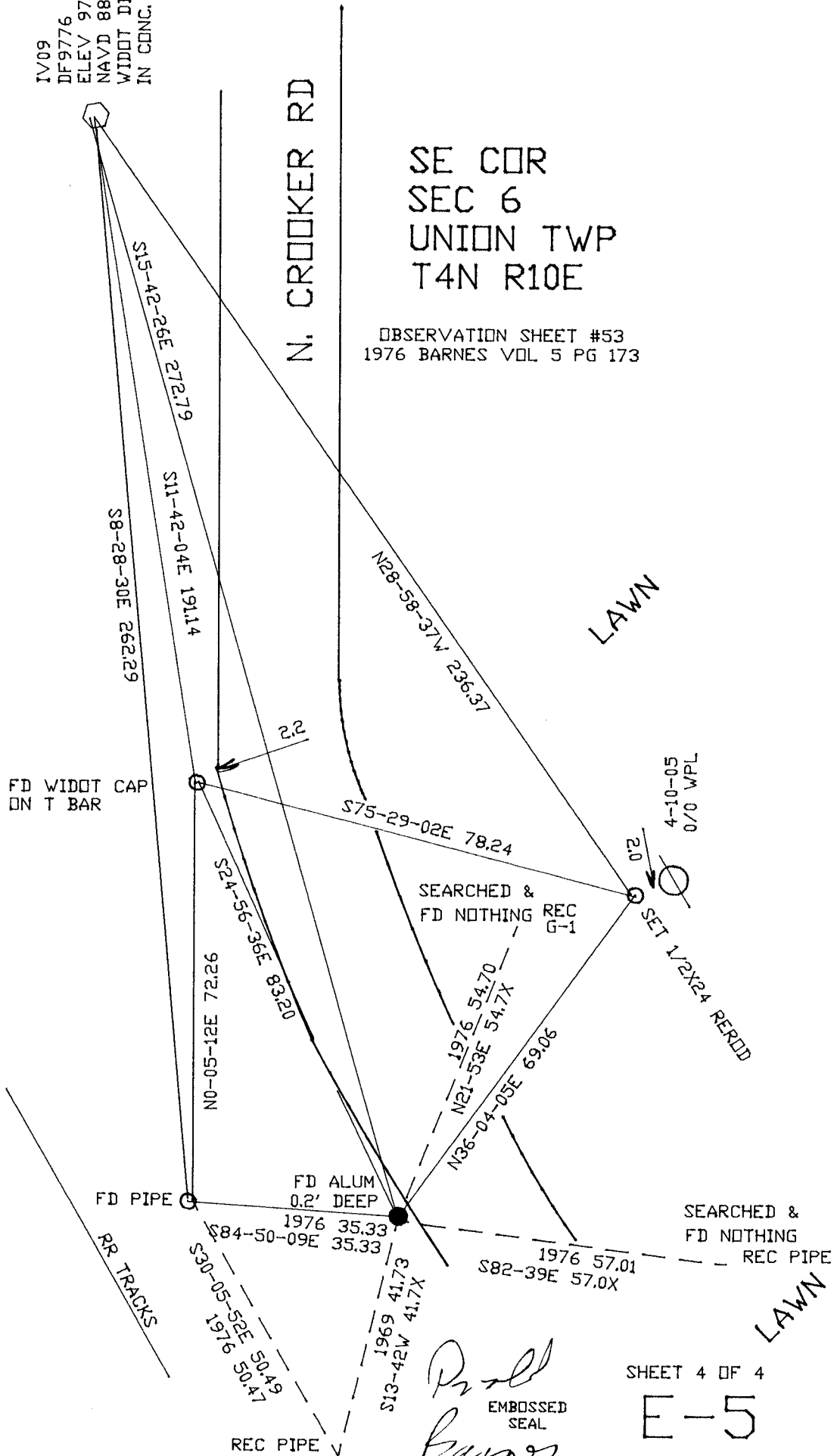
A.E. 7.08 REQUIREMENT

IV09
DF9776
ELEV 973.35
NAVD 88
WIDOT DISK
IN CONC.

N. CROOKER RD

SE COR
SEC 6
UNION TWP
T4N R10E

OBSERVATION SHEET #53
1976 BARNES VOL 5 PG 173



SHEET 4 OF 4

E-5

Paul Barnes
EMBOSSSED SEAL

CT 24, 2011