

# U.S. PUBLIC LAND SURVEY MONUMENT RECORD

For Public Land Survey Corners in the

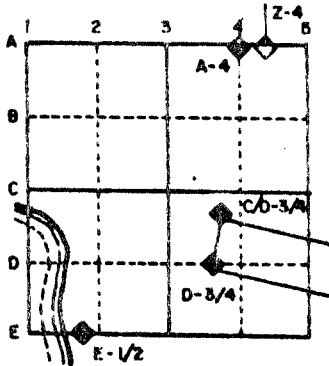
T. 4 N., R. 10 E.

## CORNER CODE INDEX

	2	3	4	5	6	7	8	9	10	11	12	13	14	15	16	17	18	19	20	21	22	23	24	25
A				◆																				
B																								
C	6				5																			
D						4																		
E																								
F																								
G																								
H	7					8																		12
J																								
K																								
L	18																							13
M																								
N																								
O																								
P	19																							
Q																								
R																								
S																								
T	30																							25
U																								
V																								
W																								
X	31																							36
Y																								
Z																								

PLACE MONUMENT SYMBOL (◆) AT PROPER LOCATION ON ABOVE INDEX

### EXAMPLE



UNION \_\_\_\_\_ TWP  
ROCK COUNTY WI

IF AVAILABLE  
STATE PLANE COORDINATES

North (Y) \_\_\_\_\_ Eleve. (Z) \_\_\_\_\_  
 East (X) \_\_\_\_\_ Zone \_\_\_\_\_  
 Hor. Datum \_\_\_\_\_ Vert. Datum \_\_\_\_\_

(c.)

◆ CORNER MONUMENT

○ WITNESS MONUMENT

BEARINGS ARE BASED ON:

SEE REVERSE SIDE

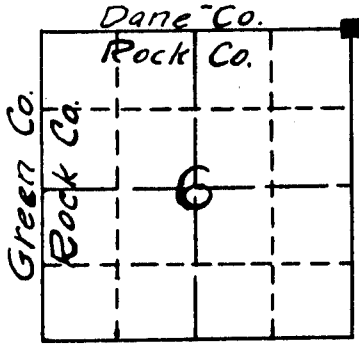
SHEET \_\_\_\_\_ OF \_\_\_\_\_

CORNER CODE: **A5**

**GOVERNMENT CORNER REFERENCE**  
Dane County, Wisconsin

Government corner 31  
6/5  
Township 4 North  
Range 10 East

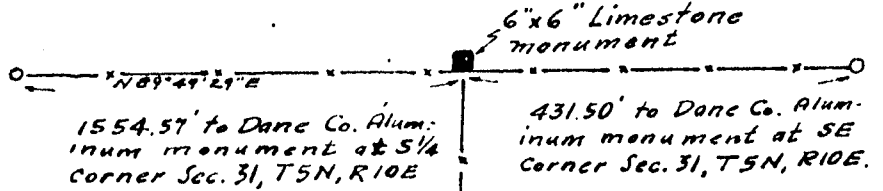
Date of survey Aug. 1, 1974  
Fieldbook Dane Co. 523 pg. 17-22  
Also see Survey Plat No. 8638-4 in  
Dane Co. Surveyor's Office file.  
(Weir)



LOCATION SKETCH

This space for drawing of corner showing type of Monument set, distance and direction of reference monument, a note if distances are not measured on a horizontal plane, and where measurement is taken on reference point.

The stone is located on the North side of an E-W fence and in line with a fence to the South. It extends about 3-inches above ground. It has an engraved 6 on its West face, a 5 on its East face and a 31 on its North face. (See Polar color photograph)



See survey field notes of resurvey of Town of Union, Rock Co. (Sept. 1870) filed in Co. Surveyor's Office at Jonesville Wis.

**SURVEYORS AFFIDAVIT** (Surveyor must certify the method by which the above described corner has been located or relocated.)  
STATE OF WISCONSIN }  
COUNTY OF DANE } ss

I hereby certify that a 6" x 6" limestone monument was noted to be in place on July 19, 1974 at the Northeast corner of Section 6, T4N, R10E (Town of Union) Rock County Wis.

DVD Doyle  
Registered Land Surveyor - Number S-17

RUTLAND

CORNER NUMBER 24-5

MICROFILMED

MAP # 5085

Sec 6 UNION TWP

"FILE B-1"