

Paper weight-110# (minimum)

Black nonfading ink required

U.S. PUBLIC LAND SURVEY MONUMENT RECORD

For Public Land Survey Corners In:
T. 4 N. R. 10 E. 4th P.M.
CORNER CODE INDEX

WI ADMINISTRATIVE CODE A-E 7.08 REQUIREMENT
REV 10/23/2004 USMONREC.DWG

UNION TWP
ROCK COUNTY WI

IF AVAILABLE
ROCK COUNTY COORDINATES PREFERRED

A	1	2	3	4	5	6	7	8	9	10	11	12	13	14	15	16	17	18	19	20	21	22	23	24	25	A
B			6				5				4				3			2				1				B
C																										C
D																										D
E																										E
F																										F
G																										G
H																										H
J																										J
K																										K
L																										L
M																										M
N																										N
O																										O
P																										P
Q																										Q
R																										R
S																										S
T																										T
U																										U
V																										V
W																										W
X																										X
Y																										Y
Z																										Z

North _____ Elev. _____

East _____

Hor. Datum _____ Vert. Datum _____

LATITUDE _____ ELLIPS. HT. _____

LONGITUDE _____

NAD83(91) _____ NETWORK ADJ. YR 2010 _____

GPS (X) _____ TRAVERSE (X) X

BASED ON THE FOLLOWING CONTROL:

PLACE MONUMENT SYMBOL AT PROPER LOCATION ON ABOVE INDEX

CORNER MONUMENT

WITNESS MONUMENT

(a)

ROCK COUNTY PROJECTION
BEARINGS ARE BASED ON: _____

FIELD BOOK _____ PAGE # _____
OR OBSERVATION SHEET _____

SHEET 1 OF 3

SHOW A PLAN VIEW DRAWING DEPICTING THE CORNER MONUMENT AND SURROUNDING PHYSICAL FEATURES, INCLUDING THE EXCAVATION AREA AND DEPTH.

PLANNING & ZONING COMMITTEE ADOPTED THIS FORM ON 12/2/1982

CORNER CODE 5-11(1)

UN546 N1/4CORSEC16

(B) Describe any record evidence, monument evidence, occupational evidence, testimonial evidence or any other material evidence you considered, and whether the monument was found or placed.

- 1833 HARRISON EAST ON RAND. BET SECS 9 & 16
2640.00 TEMPY 1/4 SEC COR.
4884.00 ROAD N.W.
5299.80 INT E BDY 26.4' S OF P LAND SAME
WEST COR WEST
2649.90 QUARTER SEC COR. {BURR O 12 S46E 15.18';
BURR O 12 N78E 17.82' BURR O 12 & BURR O
12} MARKED
5299.80 SEC COR.
- 1856 CHURCH VOL 1 PG 60 STATES NOTHING ABOUT MON. USED
TO SUBDIVIDE SEC 16. 2700.72 TO NW COR SEC 16,
2663.10 TO NE COR SECC 16, VAR 7-45 2634.72 TO CENTER
OF SEC 7, & VAR 7-45 5269.44 TO S 1/4 COR SEC 16
- 1859 RUGER VOL 1 PG 116 & #5108 BURR OAK 18 N16-05E
50.16' VAR 8-05 SURROUNDED POST BY 4 HARD HEADS.
2655.84 TO SURROUNDED POST BY 4 HH @ CENTER OF
SEC 9
- 1870 RUGER AUG 27 REMON-92 EAST ON NORTH LINE OF NW
1/4 SEC 16 ON A VAR 8-15, AT
2706.66 INTERSECTED QUARTER LINE AT QUARTER
CORNER. FOUND STAKE SURROUNDED BY 4
HARD HEAD STONES SET BY SELF IN A PREVIOUS
SURVEY AT CORNER.
EAST ON NORTH LINE OF NE 1/4 SEC 16
ON A VAR 8-05; AT
2678.28 INTERSECTED EAST BOUNDARY LINE 8.08 SOUTH
OF CORNER. FOUND STAKE SURROUNDED BY 4
HARD HEAD STONES SET BY SELF AT CORNER IN
A PREVIOUS SURVEY.
COR VAR 8-15
- 1890 BLEEDORN VOL 2 PG 430 MON. USED TO SUBDIVIDE SEC
16
- 1957 BATTERMAN VOL 3 PG 516 DUG 5X5X2' DEEP. FD 6X6X36"
LONG MON SURROUNDED BY 4 HH. SET 2" PPE 2' SOUTH
OF CENTER OF RD. REFERENCED SAME.
- 1971 LEE VOL 4 PG 532 SEE REF VOL 3 PG 516 5345.87 TO N
1/4 COR SEC 9
- 1976 SCHROEDER CSM VOL 5 PG 312 STATES NOTHING ABOUT
MON.
- 1979 BARNES VOL 5 PG 528 S88-47-06W 2711.33 TO NW COR
SEC 16
- 1982 SCHROEDER CSM VOL 11 PG 33 STATES NOTHING ABOUT
MON. SOUTH 33.00 TO LOT COR.
- 1993 SCHROEDER #10277 SEC COR MON. EAST TO NE COR SEC
16 & FROM NE COR SEC 16 TO E 1/4 COR SEC 16 IT IS
S01-31W
- 1994 KARNS CSM VOL 17 PG 321 ROCK COUNTY MON. 2079.64
TO FD PK @ SW COR SEC 9
- 1995 KARNS #8247 ROCK COUNTY SECTION CORNER NORTH
1334.89 ALONG THE N/S 1/4 LINE TO THE POB
- 2001 COMBS #14246 FD PK EAST 2684.94 TO FD PIPE @ NE
COR SEC 16 & S0-55-15W 2616.31 TO SET PIN @ CENTER
OF SEC 16
- 2007 KARNS CSM VOL 31 PG 188 ROCK COUNTY SEC COR.
2669.78 TO ROCK COUNTY SEC @ CENTER SEC 9
- 2009 COMBS J-11 FD 1" PIPE & FD REFENCE PIPES.

SEAL
D. D. Base
OCT 24, 2011

SHEET 1 OF 3

CORNER CODE J-11(1)

FD PIPE 0.2' DEEP; 3.0' SOUTH PVMT CENTER.

C) Was the corner restored through acceptance of (1) an obliterated evidence location, or, (2) a found perpetuated location?

ACCEPTED FD PIPE, WHICH PERPETUATES THE CUT STONE.

D) Describe any material discrepancy between the location of the corner as restored or reestablished and the location of that corner as previously restored or reestablished by distance and direction. Show the discrepancy on the plan view drawing under (a), above. Show the distances between the corner as previously restored or reestablished and (1) the corner as restored or reestablished, and (2) to at least 4 of the witness monuments shown on the drawing in (a), above.

NONE

(E) Was the corner reestablished through lost corner proportionate methods? If so, show the method, including the directions and distances to other public land survey corners used as evidence or used for proportioning the corner location.

NO

I, **Donald Barnes**, hereby certify that the corner location as identified by the corner code index was determined by me under my direction and control and that this U.S. Public Land Survey Monument Record is correct and complete to the best of my knowledge and belief.

SEAL
Donald Barnes
02/24/2011

SHEET 2 OF 3

CORNER CODE J-1 1(1)
A.E. 7.08 REQUIREMENT

S 1/4 COR
 SEC 9
 UNION TWP
 T4N R10E

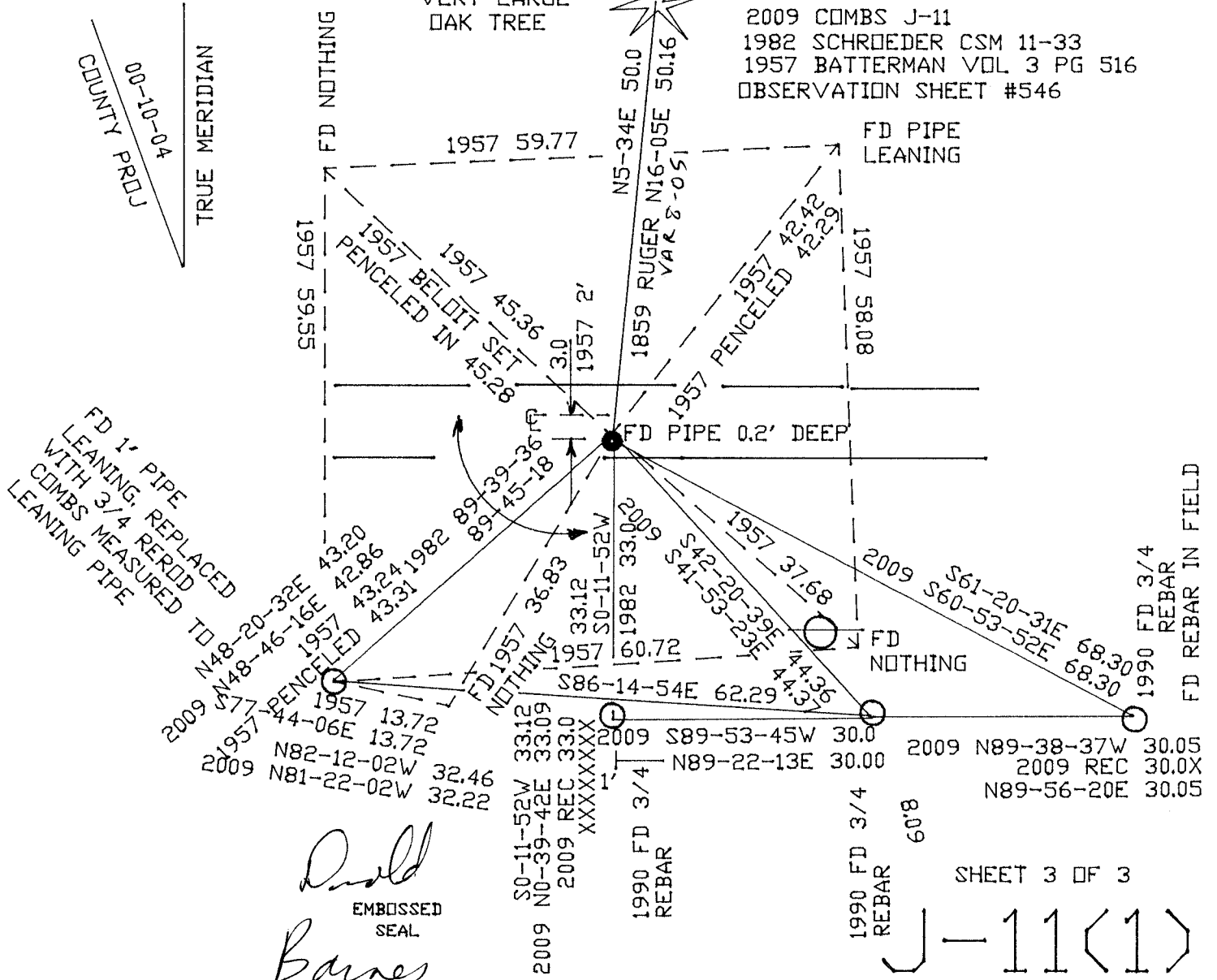
2009 COMBS J-11
 1982 SCHROEDER CSM 11-33
 1957 BATTERMAN VOL 3 PG 516
 OBSERVATION SHEET #546

XXXXXXXXXX

VERY LARGE
 OAK TREE



COUNTY PROJ
 00-10-04
 TRUE MERIDIAN



D. D. Barnes
 EMBOSSED
 SEAL

Barnes

OCT 18, 2011