

Paper weight-110# (minimum)

Black nonfading ink required

# U.S. PUBLIC LAND SURVEY MONUMENT RECORD

For Public Land Survey Corners In:  
T. 4 N. R. 10 E. 4th P.M.  
CORNER CODE INDEX

WI ADMINISTRATIVE CODE A-E 7.08 REQUIREMENT  
REV 10/23/2004 USMONREC.DWG

UNION TWP  
ROCK COUNTY WI

IF AVAILABLE  
ROCK COUNTY COORDINATES PREFERRED

A	1	2	3	4	5	6	7	8	9	10	11	12	13	14	15	16	17	18	19	20	21	22	23	24	25	A
B		6				5				4				3				2				1				B
C																										C
D																										D
E																										E
F																										F
G																										G
H																										H
J																										J
K																										K
L																										L
M																										M
N																										N
O																										O
P																										P
Q																										Q
R																										R
S																										S
T																										T
U																										U
V																										V
W																										W
X																										X
Y																										Y
Z																										Z

North \_\_\_\_\_ Elev. \_\_\_\_\_

East \_\_\_\_\_

Hor. Datum \_\_\_\_\_ Vert. Datum \_\_\_\_\_

LATITUDE \_\_\_\_\_ ELLIPS. HT. \_\_\_\_\_

LONGITUDE \_\_\_\_\_

NAD83(91) \_\_\_\_\_ NETWORK ADJ. YR 2010

GPS (X) \_\_\_\_\_ TRAVERSE (X) X

BASED ON THE FOLLOWING CONTROL:

PLACE MONUMENT SYMBOL  AT PROPER LOCATION ON ABOVE INDEX

CORNER MONUMENT

WITNESS MONUMENT

BEARINGS ARE BASED ON: ROCK COUNTY PROJECTION

FIELD BOOK \_\_\_\_\_ PAGE # \_\_\_\_\_  
OR OBSERVATION SHEET \_\_\_\_\_

SHEET 1 OF 3

SHOW A PLAN VIEW DRAWING DEPICTING THE CORNER MONUMENT AND SURROUNDING PHYSICAL FEATURES, INCLUDING THE EXCAVATION AREA AND DEPTH.

PLANNING & ZONING COMMITTEE ADOPTED THIS FORM ON 12/2/1982

CORNER CODE L-13(1)

UN557 E1/4CORSEC16

(B) Describe any record evidence, monument evidence, occupational evidence, testimonial evidence or any other material evidence you considered, and whether the monument was found or placed.

- 1833 HARRISON NORTH BETWEEN SECS 15 & 16  
1633.50 BURR O 14  
2640.00 QUARTER SEC COR {BURR O 12 S24W 30.36';  
BURR O 12 N35E 56.76 BURR O 12 & BURR O  
12} MARKED  
5082.00 ROAD E & W  
5280.00 COR TO SECS 9,10,15,16 IN THE SOUTHERN  
EDGE OF MARSH {BURR O 12 N52W 308.22';  
BURR O 12 N78E 472.56'; BURR O 12 S35E  
199.98'; BURR O 12 S63W 214.50' LAND  
ROLLING 2ND RATE TIMBER GENERLY BURR,  
UNDERGROWTH GRUB, GRASS & WEEDS
- 1856 CHURCH VOL 1 PG 60 STATES NOTHING ABOUT MON. USED  
TO SUBDIVIDE SEC 16. VAR 8-15 5287.92 TO W 1/4 COR  
SEC 16 & 2645.96 TO CENTER OF SEC 16
- 1870 RUGER AUG REMON-93 SOUTH ON EAST LINE OF NE 1/4  
SEC 16 ON A VAR 6-20; OFFSET WEST  
8.91' OFFSET WEST 1.65' OFFSET WEST 6.27' AT  
2650.23 INTERSECTED QUARTER LINE 8.14' WEST OF  
QUARTER CORNER FOUND STAKE AT CORNER.  
COR VAR 6-09  
SOUTH ON EAST LINE OF SE 1/4 SEC 16  
ON A VAR 6-15; OFFST EAST 3.96' AT  
2656.17 INTERSECTED SOUTH BOUNDARY LINE 7.26'  
EAST OF CORNER. FOUND OLD STAKE AT  
CORNER. COR VAR 6-11
- 1890 BLEEDORN VOL 2 PG 430 MON. USED TO SUBDIVIDE SEC 16.  
2657.16 TO SE COR SEC 16
- 1957 BATTERMAN VOL 3 PG 516 FD CUT STONE 2664.81 TO CUT  
STONE @ SW COR SEC 15 & 2658.98 TO FD MON. @ NW COR  
SEC 15
- 1987 SCHROEDER #12785 STATES NOTHING ABOUT MON.
- 1993 SCHROEDER #10277 SEC COR MON. EAST TO NE COR SEC  
16 & FROM NE COR SEC 16 TO E 1/4 COR SEC 16 IT IS  
S01-31W
- 1993 COMBS #10149 MORTGAGE INSPECTION. STATES NOTHING  
ABOUT MON.
- 2001 COMBS #14246 FD STONE MON. N89-51W 2656.38 TO SET  
PIN @ CENTER OF SEC 16 & N89-51W 5343.13 TO STONE  
MON @ W 1/4 COR SEC 16
- 2005 THOUSAND #15024 CUT STONE FD. S01-45-00W 1328.27  
TO SET REBAR & THENCE S1-45-00W 1335.05 TO CUT  
STONE @ SE COR SEC 16
- 2005 THOUSAND L-13 FD CUT STONE, LOCATION FITS  
OCCUPATION & RECORD SECTION SUMMARY, BASED ON  
TRAVERSE FROM SE COR SEC 16. REFERENCED SAME. @  
FENCE INT.
- 2009 COMBS CSM VOL 33 PG 35 CUT LS S89-25-37E 5264.47  
TO SET R/R SPIKE @ E 1/4 COR SEC 15
- 2009 COMBS #16188 FD CUT STONE N89-25-37E 5264.47 TO FD  
R/R SPIKE @ E 1/4 COR SEC 15.

FD CUT LIMESTONE 0.8' ABOVE GRADE. SET CARSONITE ON NORTH  
FACE OF L.S. L.S. IS ON EAST SIDE OF WOOD FENCE POST.

*Emboss*  
*Parsons*  
*May 27 2011*

SHEET <sup>1</sup>/<sub>3</sub> OF 3

CORNER CODE L-13(1)

UN557 E1/4CORSE016

I DID NOT REALIZE THOUSAND PLACED REFERENCE TIES. AFTER THE FACT I USED HIS DATA TO COMPUTE THE POSITION OF HIS REFERENCE MONUMENTS, SO AN APPROXIMATE DISTANCE BETWEEN HIS AND MINE COULD BE SHOWN.

C) Was the corner restored through acceptance of (1) an obliterated evidence location, or, (2) a found perpetuated location?

ACCEPTED FD LIMESTONE.

D) Describe any material discrepancy between the location of the corner as restored or reestablished and the location of that corner as previously restored or reestablished by distance and direction. Show the discrepancy on the plan view drawing under (a), above. Show the distances between the corner as previously restored or reestablished and (1) the corner as restored or reestablished, and (2) to at least 4 of the witness monuments shown on the drawing in (a), above.

NONE

(E) Was the corner reestablished through lost corner proportionate methods? If so, show the method, including the directions and distances to other public land survey corners used as evidence or used for proportioning the corner location.

NO

I, **Donald Barnes**, hereby certify that the corner location as identified by the corner code index was determined by me under my direction and control and that this U.S. Public Land Survey Monument Record is correct and complete to the best of my knowledge and belief.

SEAL  
Emboss

*Donald Barnes*

*May 27, 2011*

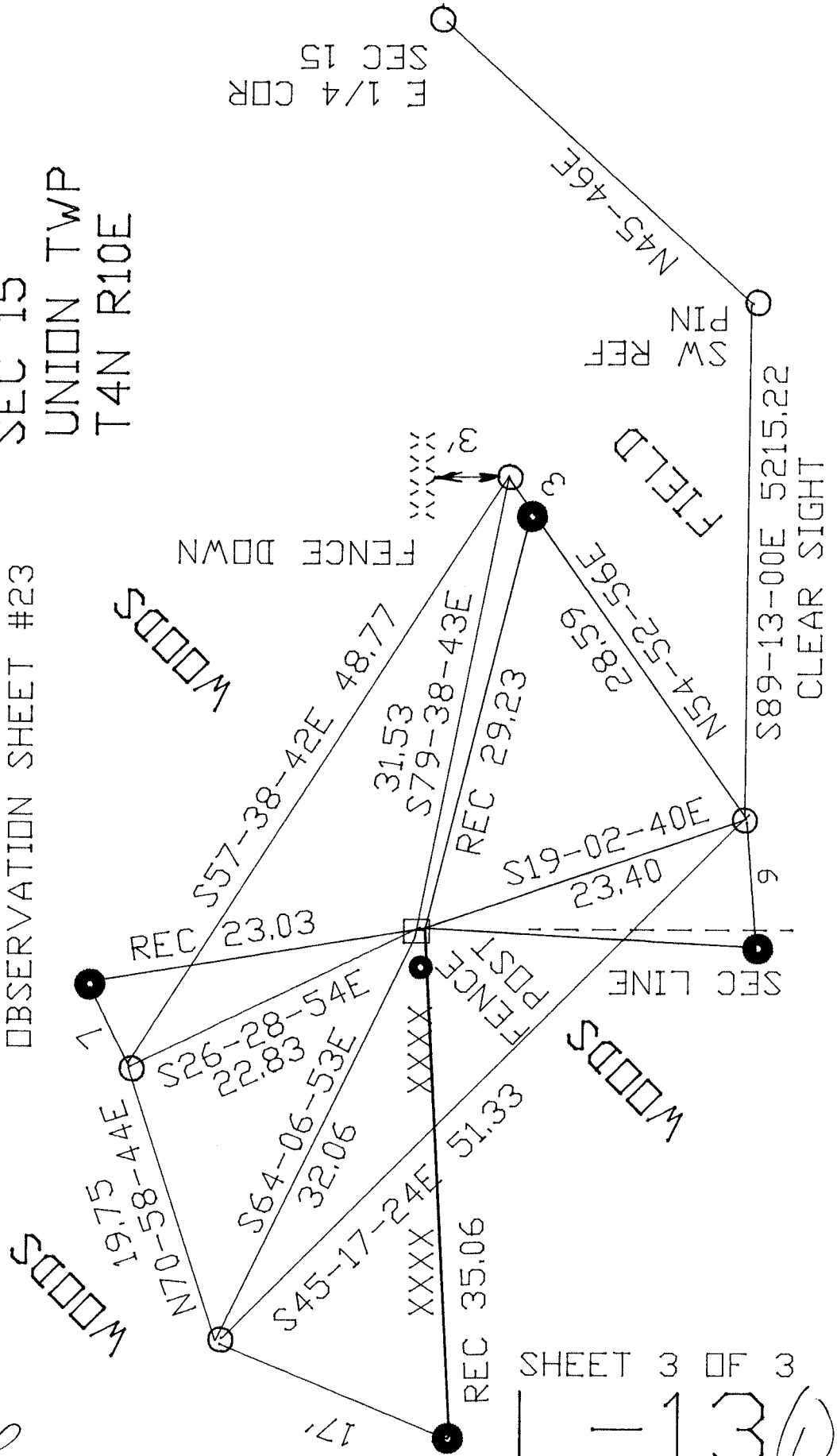
SHEET 2 OF 3

CORNER CODE L-13(1)

A.E. 7.08 REQUIREMENT

- 7/8 REBAR
- SET BY THOUSAND
- FD CUT L.S. 0.8'
- ABOVE GRADE, PLACED CARSONITE ON NORTH FACE
- SET 3/4X24 REROD
- OBSERVATION SHEET #23

W 1/4 COR  
 SEC 15  
 UNION TWP  
 T4N R10E



EMBOSSSED SEAL  
*Donald Barnes*  
 May 27 2011

SHEET 3 OF 3  
 1-13 (1)