

U.S. PUBLIC LAND SURVEY MONUMENT RECORD

For Public Land Survey Corners in:

WI ADMINISTRATIVE CODE A-E 7.08 REQUIREMENT

T. 4 N., R. 10 E

CORNER CODE INDEX

	2	3	4	5	6	7	8	9	10	11	12	13	14	15	16	17	18	19	20	21	22	23	24	25
A																								
B																								
C	6													3										
D																								
E																								
F																								
G	7													10										
H																								
I																								
J																								
K	18													15										
L																								
M																								
N																								
O																								
P	19													22	◆	23								
Q																								
R																								
S	30													27										
T																								
U																								
V																								
W																								
X	31													34										
Y																								
Z																								

UNION

TWP

ROCK COUNTY WI

IF AVAILABLE
ROCK COUNTY COORDINATES PREFERRED

North _____ Elev. _____

East _____


Hor. Datum _____ Vert. Datum _____

LATITUDE _____ ELLIPS. HT. _____

LONGITUDE _____

GPS (X) _____ TRAVERSE (X) _____

BASED ON THE FOLLOWING CONTROL:

PLACE MONUMENT SYMBOL  AT PROPER LOCATION ON ABOVE INDEX

 CORNER MONUMENT

 WITNESS MONUMENT

(a)

BEARINGS ARE BASED ON:

FIELD BOOK _____ PAGE # _____

SHEET 1 OF 2

SHOW A PLAN VIEW DRAWING DEPICTING THE CORNER MONUMENT AND SURROUNDING PHYSICAL FEATURES, INCLUDING THE EXCAVATION AREA AND DEPTH.

PLANNING & ZONING COMMITTEE ADOPTED THE ABOVE FORM ON 12/2/1982

CORNER CODE P17(1)

UN578

(B) Describe any record evidence, monument evidence, occupational evidence, testimonial evidence or any other material evidence you considered, and whether the monument was found or placed.

- 1870 RUGER REMONUMENTATION NOTES PG 97 SOUTH ON WEST LINE OF NW 1/4 SEC 23 ON A VAR 6-47 AT 2643.3' INTERSECTED 1/4 LINE 6.6' EAST OF 1/4 COR ESTABLISHED 1/4 COR FROM STUMP OF BEARING TREE. CORRECTED VAR 6-38 SOUTH ON WEST LINE OF SW 1/4 SEC 23 ON A VAR 6-55 AT 2649.90 INTERSECTED SOUTH BOUNDARY LINE AT COR.
- 1875 RUGER VOL 2 PG 201 STONE MON. VAR 5-54 2651.88 TO SW COR SEC 23; VAR 6-03 2654.52 TO CENTER OF SEC 23.
- 1938 SUNNY VOL 3 PG 389 FD STONE MON. SET 2X30" PIPE ON TOP. S4-0E 2655.7 TO SW COR SEC 23.
- 1938 SUNNY VOL 3 PG 405 FD 6X6 STONE MON 3' LOW. SET 2X30 PIPE ON TOP FOR COR. REFERENCED SAME. CHAINED 2655.7' TO SE COR SEC 22 (FD STONE MON. GRADED OUT BY C.H. DEPT IN 1929. RESET MON. BY PROPORTIONATE MEASUREMENTS)
- 1974 LEE VOL 5 PG 29 FD 2" PIPE OVER CUT STONE MON. 12-12-74 RB & J.L. ESTABLISHED TIES.
- 1985 BARNES VOL 6 PG 337 & 340 S0-27-33E 2655.90 TO SE COR SEC 22.
- 1985 BARNES P-17 FOUND PK THAT WAS IN HARMONY WITH OLD TIES. ESTABLISHED REFERENCE TIES. 2' EAST OF CENTER OF PVMT.

FD PK 0.2' DEEP 1.3' EAST OF THE CENTER OF PVMT, SW, NW, & NE REFERENCE PIPES.

(C) Was the corner restored through acceptance of (1) an obliterated evidence location, or, (2) a found perpetuated location?

ACCEPTED FOUND PK.

(D) Describe any material discrepancy between the location of the corner as restored or reestablished and the location of that corner as previously restored or reestablished by distance and direction. Show the discrepancy on the plan view drawing under (a), above. Show the distances between the corner as previously restored or reestablished and (1) the corner as restored or reestablished, and (2) to at least 4 of the witness monuments shown on the drawing in (a), above.

(E) Was the corner reestablished through lost corner proportionate methods? If so, show the method, including the directions and distances to other public land survey corners used as evidence or used for proportioning the corner location.

I, Donald Barnes, hereby certify that the corner location as identified by the corner code index was determined by me under my direction and control and that this U.S. Public Land Survey Monument Record is correct and complete to the best of my knowledge and belief.

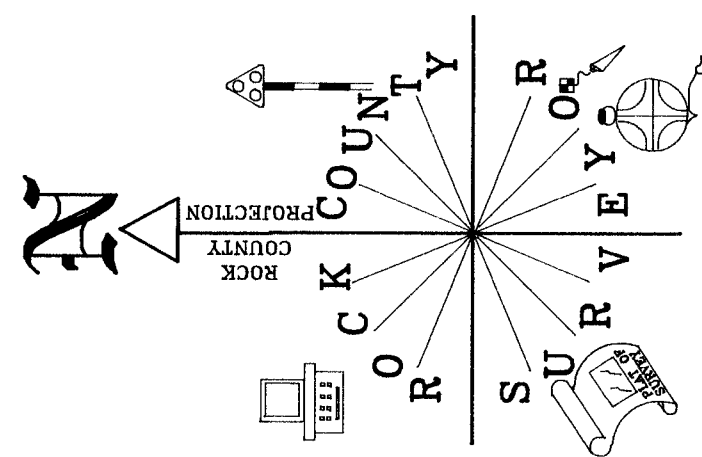
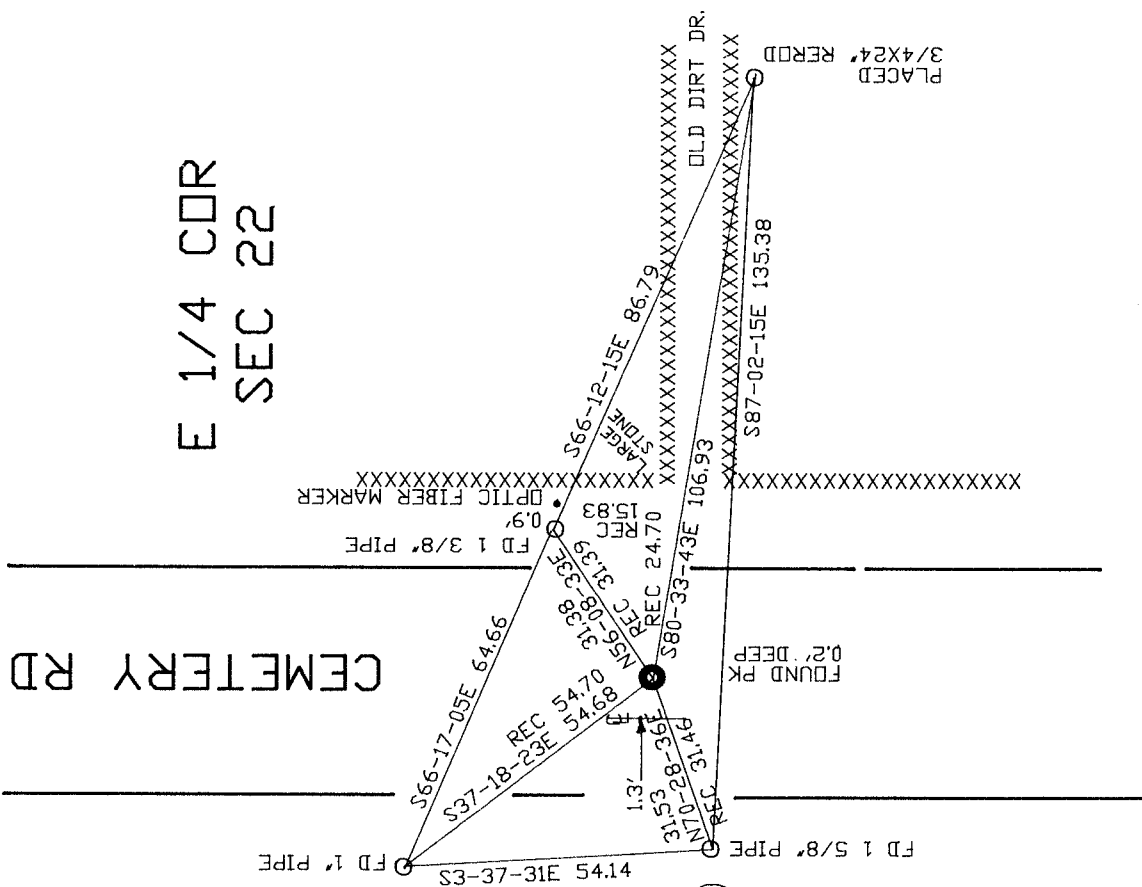
Seal

Donald Barnes
05/08/00
EmLoss

Number of included sheets 1

CORNER CODE P-17(1)
A-E 7.08 REQUIREMENT

Donald Barnes
05/28/20



OBSERVATION SHEET

P-17(1)