

Paper weight-110# (minimum)

Black nonfading ink required

U.S. PUBLIC LAND SURVEY MONUMENT RECORD

For Public Land Survey Corners In:
T. 4 N. R. 10 E. 4th P.M.
CORNER CODE INDEX

WI ADMINISTRATIVE CODE A-E 7.08 REQUIREMENT
REV 10/23/2004 USMONREC.DWG

UNION TWP

ROCK COUNTY WI

IF AVAILABLE
ROCK COUNTY COORDINATES PREFERRED

	1	2	3	4	5	6	7	8	9	10	11	12	13	14	15	16	17	18	19	20	21	22	23	24	25	
A																										A
B																										B
C																										C
D																										D
E																										E
F																										F
G																										G
H																										H
J																										J
K																										K
L																										L
M																										M
N																										N
O																										O
P																										P
Q																										Q
R																										R
S																										S
T																										T
U																										U
V																										V
W																										W
X																										X
Y																										Y
Z																										Z

North _____ Elev. _____

East _____

Hor. Datum _____ Vert. Datum _____

LATITUDE _____ ELLIPS. HT. _____

LONGITUDE _____

NAD83(91) _____ NETWORK ADJ. YR 2010 _____

GPS (X) _____ TRAVERSE (X) X

BASED ON THE FOLLOWING CONTROL:

PLACE MONUMENT SYMBOL AT PROPER LOCATION ON ABOVE INDEX

CORNER MONUMENT

WITNESS MONUMENT

(a)

ROCK COUNTY PROJECTION
BEARINGS ARE BASED ON: -----

FIELD BOOK _____ PAGE # _____

OR OBSERVATION SHEET _____

SHEET 1 OF 3

SHOW A PLAN VIEW DRAWING DEPICTING THE CORNER MONUMENT AND SURROUNDING PHYSICAL FEATURES, INCLUDING THE EXCAVATION AREA AND DEPTH.

PLANNING & ZONING COMMITTEE ADOPTED THIS FORM ON 12/2/1982

CORNER CODE J-15(2)

UN548 N1/4CORSEC15

(B) Describe any record evidence, monument evidence, occupational evidence, testimonial evidence or any other material evidence you considered, and whether the monument was found or placed.

- 1833 HARRISON EAST ON RAND. BET SECS 10 & 15
2640.00 TEMPY 1/4 SEC COR
5215.98 INT E BDY 15.84' N OF P
LAND ROLLING 2ND RATE TIMBER MOSTLY BURR
O & W.O. ??? GRUBS GRASS & WEEDS
WEST COR WEST BET SECS 16 & 15
2607.99 QUARTER SEC COR {BURR O S39E 26.4'; BURR
O 12 N55E 46.2' BURR O 12 & BURR O
12} MARKED
5215.98 SEC COR NOV 8 TH 1833
- 1870 RUGER AUG REMON-99 EAST ON NORTH LINE OF NW 1/4
SEC 15 ON A VAR 6-54; OFFSET SOUTH
11.88' OFFSET SOUTH 7.26' AT
2614.26 INTERSECTED QUARTER LINE 23.76' SOUTH OF
QUARTER CORNER. FOUND REMAINS OF STUMPS
OF BOTH BEARING TREES. ESTABLISHED
QUARTER CORNER FROM THEM. COR VAR 6-52
EAST ON NORTH LINE OF NE 1/4 SEC 15
ON A VAR 7-55; OFFSET NORTH 12.54'
OFFSET NORTH 11.22' AT
2610.30 INTERSECTED EAST BOUNARY LINE 78.54'
NORTH OF CORNER. FOUND REMAINS OF OLD
STAKE AT CORNER. COR VAR 6-44
- 1924 UNK. VOL 3 PG 125 STATES NOTHING ABOUT MON.
REFERENCE POSITION TO FENCE POSTS.
- 1951 BATTERMAN VOL 3 PG 516 MON. NOT FD. ARROW TO
CENTER OF STH 13, CENTER OF HWY 9.04 EAST OF COR.
2613.69 TO CUT STONE @ NE CORSEC 15
- 1975 SCHROEDER VOL 5 PG 75 FB#20/4 [FB #1 PG 3 & 4]
REFERENCED CORNER. STATES NOTHING ABOUT MON. @
PVMT CENTER OF STH 14, ON SOUTH PVMT EDGE OF BUTTS
CORNER RD PROJECTED EAST, ON LINE WITH E/W FENCE LINE
ON EAST SIDE OF RD. REFERENCED SAME. IN FB#1 PG 3
HE STATES HE DUG & FD NOTHING. HE USED A
JACKHAMMER TO DIG THRU CONCRETE. DRAWING INDICATES
THE HOLE WAS ON THE EAST & WEST SIDE OF THE CENTER
OF THE PVMT & ON THE EAST SIDE THE END OF THE HOLE
WAS EXTENDED TO THE NORTH & SOUTH. SHOWS CONC.
NAIL PLACED 12 NORTH & 12 WEST OF THE CORNER.
- 1975 GRENLIE CSM VOL 4 PG 360 SET BY COUNTY SURVEYOR BY
PROPORTION FROM STONES.
- 1976 WOODMAN CSM VOL 6 PG 150 SET PK FROM TIES. S88-06-
40W TO 2" PIPE @ NW COR SEC 15 & S1-45-00E TO ALUM @
S 1/4 COR SEC 15
- 1987 SCHROEDER #12785 STATES NOTHING ABOUT MON.
- 1994 SCHROEDER CSM VOL 15 PG 132 STATES NOTHING ABOUT
MON. LINE TO S 1/4 COR SEC 15
- 1994 BARNES J-15 DID NOT FIND A MONUMENT. RESTORED COR
THROUGH ACCEPTANCE OF OBLITERATED EVIDENCE
LOCATION. USED FD TIES OF RECORD. RD CONSTRUCTION
WILL DISTURB AREA.
- 1995 MOORE #9230 AS TIED BY SCHROEDER CO. SURVEYOR
- 2009 COMBS J-15(1) SET PK MASONRY NAIL. OBLITERATED
EVIDENCE LOCATION - USED TIES OF RECORD. FD 1 1/2"
PIPE N89-50-34W 33.18 (REC 32.96) FROM PK. SOUTH OF
BUTTS CORNER RD.
- 2009 COMBS #16188 SET PK S89-21-05E 2613.78 TO CUT
STONE @ NE COR SEC 15 & S0-17-15W 5335.99 TO SET
PK @ S 1/4 COR SEC 15

SEAL
D. Barnes
Emboss
Barnes
OCT 24, 2011

SHEET 1 OF 3

CORNER CODE J-15(2)

UN548 N1/4CORSEC15

FD REFERENCE MONUMENTS & PK. THE LOCATION IS EXTREMELY DANGEROUS. DIFFICULT TO SEE TRAFFIC FROM THE NORTH.

C) Was the corner restored through acceptance of (1) an obliterated evidence location, or, (2) a found perpetuated location?

ACCEPTED POSITION AS DETERMINED BY REFERENCE TIES. THE PRORATED DISTANCE TO THE NW COR SEC 15 IS WITHIN 1.1' OF THE MEASURED DISTANCE.

D) Describe any material discrepancy between the location of the corner as restored or reestablished and the location of that corner as previously restored or reestablished by distance and direction. Show the discrepancy on the plan view drawing under (a), above. Show the distances between the corner as previously restored or reestablished and (1) the corner as restored or reestablished, and (2) to at least 4 of the witness monuments shown on the drawing in (a), above.

THE FD PK IS N73-12-46E 0.34' FROM THE POSITION AS DETERMINED BY THE REFERENCE TIES.

(E) Was the corner reestablished through lost corner proportionate methods? If so, show the method, including the directions and distances to other public land survey corners used as evidence or used for proportioning the corner location.

NO

I, **Donald Barnes**, hereby certify that the corner location as identified by the corner code index was determined by me under my direction and control and that this U.S. Public Land Survey Monument Record is correct and complete to the best of my knowledge and belief.

SEAL

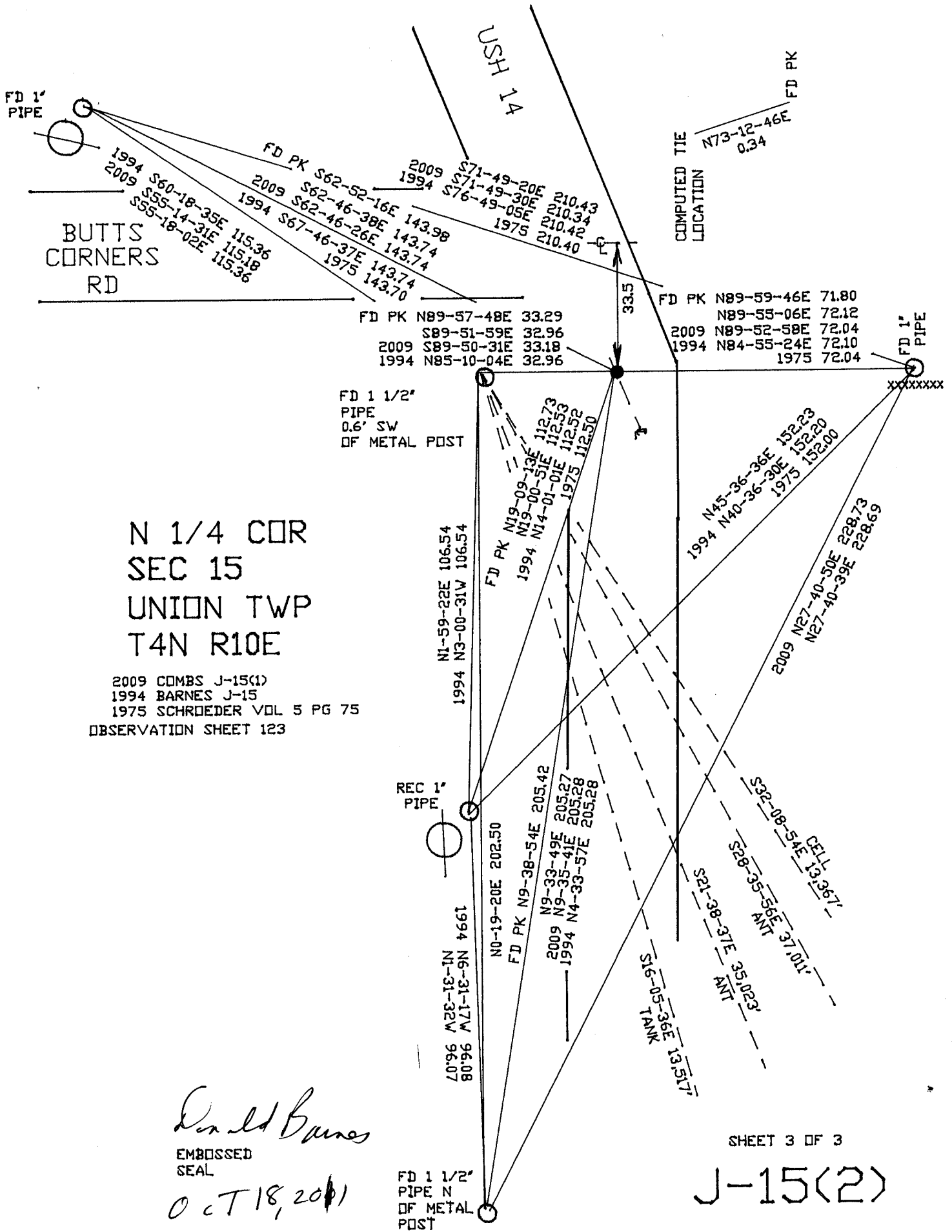

SHEET 2 OF 3

Barnes

OCT 24, 2011

CORNER CODE J-15(2)

A.E. 7.08 REQUIREMENT



N 1/4 COR
 SEC 15
 UNION TWP
 T4N R10E

2009 COMBS J-15(1)
 1994 BARNES J-15
 1975 SCHROEDER VOL 5 PG 75
 OBSERVATION SHEET 123

Donald Barnes
 EMBOSSED
 SEAL
 OCT 18, 2011

SHEET 3 OF 3

J-15(2)

FD 1 1/2"
 PIPE N
 OF METAL
 POST