

Paper weight-110# (minimum)

Black nonfading ink required

U.S. PUBLIC LAND SURVEY MONUMENT RECORD

For Public Land Survey Corners In:

WI ADMINISTRATIVE CODE A-E 7.08 REQUIREMENT

T. 4 N. R. 10 E. 4th P.M.

REV 10/23/2004

USMONREC.DWG

CORNER CODE INDEX

	1	2	3	4	5	6	7	8	9	10	11	12	13	14	15	16	17	18	19	20	21	22	23	24	25		
A																											A
B																											B
C																											C
D																											D
E																											E
F																											F
G																											G
H																											H
J																											J
K																											K
L																											L
M																											M
N																											N
O																											O
P																											P
Q																											Q
R																											R
S																											S
T																											T
U																											U
V																											V
W																											W
X																											X
Y																											Y
Z																											Z

UNION TWP
ROCK COUNTY WI

IF AVAILABLE
ROCK COUNTY COORDINATES PREFERRED

North _____ Elev. _____

East _____

Hor. Datum _____ Vert. Datum _____

LATITUDE _____ ELLIPS. HT. _____

LONGITUDE _____

NAD83(91) _____ NETWORK ADJ. YR _____

GPS (X) _____ TRAVERSE (X) _____

BASED ON THE FOLLOWING CONTROL:

PLACE MONUMENT SYMBOL AT PROPER LOCATION ON ABOVE INDEX

CORNER MONUMENT

WITNESS MONUMENT

(a)

BEARINGS ARE BASED ON: ROCK COUNTY PROJECTION

FIELD BOOK _____ PAGE # _____
OR OBSERVATION SHEET _____

SHEET 1 OF 4

SHOW A PLAN VIEW DRAWING DEPICTING THE CORNER MONUMENT AND SURROUNDING PHYSICAL FEATURES, INCLUDING THE EXCAVATION AREA AND DEPTH.

PLANNING & ZONING COMMITTEE ADOPTED THIS FORM ON 12/2/1982

CORNER CODE 21 (2)

UN559 E1/4CORSEC14

(B) Describe any record evidence, monument evidence, occupational evidence, testimonial evidence or any other material evidence you considered, and whether the monument was found or placed.

- 1833 HARRISON (NOV5) T4N R10E NORTH BET 13 & 14
1599.84 BURR O 22
2640.00 QUARTER SEC. COR. BURR O 18 N42E 9.9";
BURR OAK 18 S41E 52.14' BURR 18 & BURR
18}MARKED
2871.00 ROAD E & W & LEAVE TIMBER AND ENTER
PRAIRIE
3796.98 BROOK 3.3' CRS N.E.
4620.0 SPRING & ?? S.E.
5280.00 SEC COR TO SECS 11,12,13,14. SET A POST &
RAISED A MOUND LAND 1ST 1/2 MILE SAME AS
BEFORE AND 2 1/2 ROLLING PRAIRIE 2ND RATE
SOMEWHAT WET.
- 1870 RUGER AUG REMON-101 SOUTH ON EAST LINE OF NE 1/4
SEC 14 ON A VAR 7-05; OFFSET WEST 6.6' AT
2648.25 INTERSECTED QUARTER LINE 9.24'. WEST OF
QUARTER CORNER. FOUND REMAINS OF OLD
STAKE AT CORNER. ALSO FOUND REMAINS OF
SOUTH BEARING STUMP. STAKE CORRECT. COR
VAR 7-08
SOUTH ON EAST LINE OF SE 1/4 SEC 14 ON A
VAR 6-50; AT
2659.47 INTERSECTED SOUTH BOUNDARY LINE AT
CORNER.
- 1970 BATTERMAN VOL 4 PG 440 CUT STONE SET MON. BOX OVER
STONE. & REFERENCED SAME. NOTE: RE-REFERENCED. BOX
TAKEN OUT BY COUNTY HWY DEPT. BK 152/38. RE-REF
7/10/70. FIELD NOTES "BOX TAKEN OUT BY COUNTY HWY
DEPT AS OF 1-17-74. SET MON BOX OVER CUT STONE 7-10-
70. DRAWING SHOWS SW REF MON @ OR NEAR INT OF N/S
FENCE & E/W FENCE. ALSO SHOWS NORTH REF MON JUST
SOUTH OF E/W FENCE & JUST WEST OF N/S FENCE.
- 1974 SCHROEDER CSM VOL 3 PG 297 STATES NOTHING ABOUT
MON. USED FOR LINE FROM W 1/4 COR SEC 14.
- 1974 KIENBAUM CSM VOL 4 PG 69 PK USED 1" PIPE @ SW COR
SEC 13 FOR LINE.
- 1984 SCHROEDER #13922 STATES NOTHING ABOUT MON.
2641.00 TO CENTER OF SEC 14
- 1998 KARNS CSM VOL 22 PG 54 RESET PK FROM PREVIOUS
SURVEY. 2664.59 TO FD ROCK COUNTY MON @ SW COR SEC
13.
- 2002 COMBS CSM VOL 25 PG 131 SET PK S89-31-15E 5231.59 TO
POLY @ E 1/4 COR SEC 13 & SOUTH 2664.59 TO FD PIPE @
SW COR SEC 13
- 2004 HOULE CSM VOL 28 PG 51 E 1/4 COR SEC 14 WAS
COMPUTED FROM TIES TO CSM VOL 25 PG 131-
134. 2664.59 TO FD 1" PIPE @ SE COR SEC 14
- 2011 GRENLIE CSM PRELIM FD 3/4 REBAR. 2641.00 TO FD R/R @
CENTER OF SEC 14.

I FOUND DISCREPENCIES WITH THE DISTANCES SHOWN IN VOL 4 PG 440 WITH THE ACTUAL FIELD NOTES. PHOTO COPY OF FIELD BOOK #152 PG 38 CALLS FOR 40.88' FROM THE SW REFERENCE MON TO THE SEC COR WHICH IS DIFFERENT THAN THE 43.20' SHOWN IN VOL 4. IN THE FIELD BOOK THE DISTANCE FROM THE SE REFERENCE MONUMENT TO THE NORTHERN MONUMENT IS 79.36' AND NOT 79.86 AS SHOWN IN VOL 4. THE DISTANCE TO THE NORTHERN REFERENCE MONUMENT IS NOT SHOWN IN VOL 4 PG 440 BUT THE

Ronald
Barnes

7/16/12 oir

SHEET 7 OF 4

CORNER CODE L-21(1)

UN559 E1/4CORSEC14

DISTANCE IN THE FIELD BOOK IS 28.10. USING THESE RECORD DISTANCES THE LEAST SQUARES ADJUSTMENT FITS VERY WELL WITH THE FIELD BOOK RECORD DISTANCES.

DUG & FD 2.5' LONG CUT LS IN E/W HORIZONTAL POSITION WITH THE TOP ON THE EAST SIDE OF THE MON. POSITION. ABOUT 6" OF THE END WAS WEST OF THE EXCAVATION CUT. THE STONE WAS ABOUT 2' BELOW THE PVMT SURFACE. DUG 4' DEEP IN SEARCH FOR THE BOTTOM OF THE LS. DUG BY HAND ABOUT 1.5 WEST OF THE EXCAVATION LIMIT FOR THE BOTTOM. SET ALUM MON. AT INTERSECTION OF THE FIELD BOOK RECORD DISTANCES. THIS IS IN HARMONY WITH THE E/W & N/S PVMT CENTERS.

C) Was the corner restored through acceptance of (1) an obliterated evidence location, or, (2) a found perpetuated location?

DID NOT ACCEPT THE FD PIN. I USED THE RECORD DISTANCES TO THE NORTH & SW REFERENCE PINS, WHICH IS IN HARMONY WITH THE PVMT CENTER & FOUND LIMESTONE. THE WEST END OF THE LS IS ABOUT 1.1' NORTH OF THE CORNER AND ABOUT 0.3' WEST OF THE COR. THE COR IS ABOUT 1' NORTH OF THE SOUTH EDGE OF THE EXCAVATION & ABOUT 3 WEST OF THE WEST EDGE OF THE EXCAVATION. DID NOT FIND A RECORD OF WHO PLACED THE PIN OR HOW IT WAS SET. RECORD SHOWS PKs BEING SET IN 1974, 1998, & 2002. IN 2004 IT WAS COMPUTED FROM TIES TO GSN VOL 25 PG 131. THE 3/4 REROD WAS FIRST CALLED FOR IN 2011.

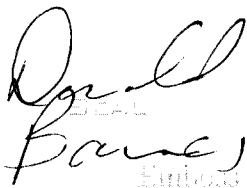
D) Describe any material discrepancy between the location of the corner as restored or reestablished and the location of that corner as previously restored or reestablished by distance and direction. Show the discrepancy on the plan view drawing under (a), above. Show the distances between the corner as previously restored or reestablished and (1) the corner as restored or reestablished, and (2) to at least 4 of the witness monuments shown on the drawing in (a), above.

COR TO FD PIN IS N59-08-59E 5.94'

(E) Was the corner reestablished through lost corner proportionate methods? If so, show the method, including the directions and distances to other public land survey corners used as evidence or used for proportioning the corner location.

NO. IN 1870 RUGER FOUND REMAINS OF OLD STAKE AT CORNER. ALSO FOUND REMAINS OF SOUTH BEARING STUMP. HE STATED THE STAKE WAS CORRECT. HIS VAR6-50 TO THE SE COR SEC 14 & VAR7-08 TO THE NE COR SEC 14 INDICATES THE CORNER IS NOT ON A STRAIGH LINE BETWEEN THE NE & SE CORNERS OF SEC 14. HOWEVER THE ALUM MON IS ONLY 0.12' WEST OF THIS LINE.

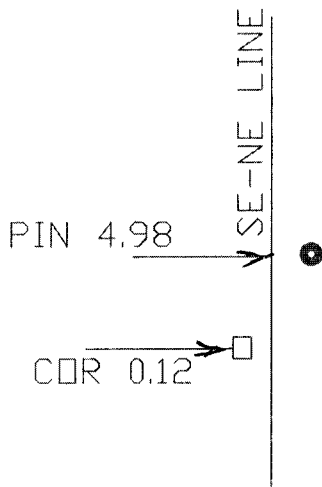
I, **Donald Barnes**, hereby certify that the corner location as identified by the corner code index was determined by me under my direction and control and that this U.S. Public Land Survey Monument Record is correct and complete to the best of my knowledge and belief.


Donald Barnes
Surveyor

SHEET 2 OF 4

7/16/2012

CORNER CODE L-21(1)
A.E. 7.08 REQUIREMENT



NE COR

N0-03-00W 5320.72
 1870 RUGER 5307.72
 1833 HARRISON 5280.00

1833 HARRISON 2640
 1870 RUGER REMON VAR7-08 2648.25
 PIN N0-09-27W 2655.99
 N0-02-51W 2659.02
 PRORATE 2645.76
 TRUE NORTH N0-10-54W

VAR7-08
 VAR6-50
 DIFF 0-18

N0-03-09W
 N0-02-15W
 DIFF 0-00-54

SEC 13

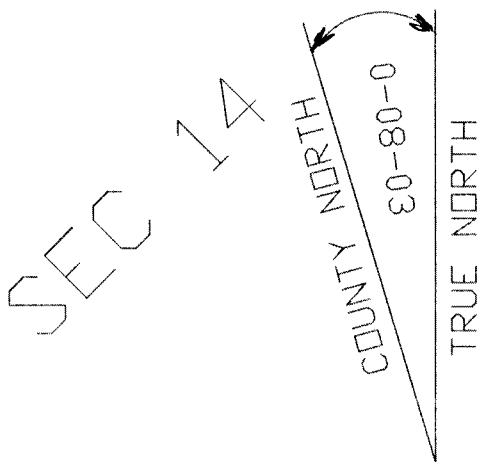
INT-PIN N89-59-31E 2640.69
 INT S89-56-28E 2635.60
 2011 GRENLIE 2641.00
 1984 SCHROEDER 2641.00

S89-29-47E 5236.72
 PIN 5231.66
 2002 COMBS 5231.59

INT
 1/4 LINES

E 1/4
 COR

E 1/4
 COR



TRUE NORTH N0-11-12W

1833 HARRISON 2640.00
 1870 RUGER REMON VAR6-50 2659.47
 1998 KARNIS 2664.59
 2002 COMBS 2664.59
 2004 HOULE 2664.59
 PIN N0-03-26E 2664.75
 COR N0-03-09W 2661.70

2002 COMBS
 COR 89-26-38
 PIN 89-31-11
 16-69-31-15

SEC 13

SHEET 4 OF 4

SCALE 0.9999992074

EMBOSSED
 SEAL 7/16/2012 SE COR
 Baues

L-21(1)