

Paper weight-110# (minimum)

Black nonfading ink required

U.S. PUBLIC LAND SURVEY MONUMENT RECORD

For Public Land Survey Corners In:
T. 4 N. R. 10 E. 4th P.M.
CORNER CODE INDEX

WI ADMINISTRATIVE CODE A-E 7.08 REQUIREMENT
REV 10/23/2004 USMONREC.DWG

UNION TWP
ROCK COUNTY WI

IF AVAILABLE
ROCK COUNTY COORDINATES PREFERRED

A	1	2	3	4	5	6	7	8	9	10	11	12	13	14	15	16	17	18	19	20	21	22	23	24	25	A
B		6					5					4					3				2				1	B
C																										C
D																										D
E																										E
F																										F
G																										G
H																										H
J																										J
K																										K
L																										L
M																										M
N																										N
O																										O
P																										P
Q																										Q
R																										R
S																										S
T																										T
U																										U
V																										V
W																										W
X																										X
Y																										Y
Z																										Z

North _____ Elev. _____

East _____

Hor. Datum _____ Vert. Datum _____

LATITUDE _____ ELLIPS. HT. _____

LONGITUDE _____

NAD83(91) _____ NETWORK ADJ. YR 2010

GPS (X) _____ TRAVERSE (X) X

BASED ON THE FOLLOWING CONTROL:

◆ CORNER MONUMENT

○ WITNESS MONUMENT

BEARINGS ARE BASED ON: ROCK COUNTY PROJECTION

FIELD BOOK _____ PAGE # _____
OR OBSERVATION SHEET _____

SHEET 1 OF 3

SHOW A PLAN VIEW DRAWING DEPICTING THE CORNER MONUMENT AND SURROUNDING PHYSICAL FEATURES, INCLUDING THE EXCAVATION AREA AND DEPTH.

PLANNING & ZONING COMMITTEE ADOPTED THIS FORM ON 12/2/1982

CORNER CODE R-19(2)

UN590 N1/4CORSEC26

(B) Describe any record evidence, monument evidence, occupational evidence, testimonial evidence or any other material evidence you considered, and whether the monument was found or placed.

- 1833 HARRISON (NOV5) T4N R10E EAST ON RAND 23 & 26
2640.00 TEMPY 1/4 SEC COR.
5247.00 INT. E BDY 2.64' N OF P LAND ROLLING 2ND
RATE TIMBER W. & BURR O. ??? GRASS &
WEEDS
WEST COR WEST BET SEC 23 & 26
2623.50 QUARTER SEC COR. {BURR O 18 S16E 26.4'
BURR O 18 N83E 42.24' BURR O 18 & BURR O
18} MARKED
5247.00 SEC OR.
- 1856 CHURCH VOL 1 PG 63 USED TO SUBDIVIDE SEC 26. STATES
NOTHING ABOUT MON. 2655.84 TO CEN OF SEC 26 &
5311.68 TO S 1/4 COR SEC 26
- 1865 LOCKE VOL 1 PG 232 & LOCKE #5199 FD N BT & STUMP OF
S BT & STAKE WITH HARD HEAD ON SURFACE. 2641.85 TO
OLD STAKE @ NE COR SEC 26, 2656.83 TO SET STAKE @
CEN SEC 26, & 5313.33 TO FD OLD POST IN MOUND @ S 1/4
COR SEC 26. USED TO SUBDIVIDE SEC 26
- 1870 RUGER AUG REMON-67 WEST ON NORTH LINE OF NE 1/4
SEC 26 ON A VAR 6-40 AT
2647.26 INTERSECTED QUARTER LINE 22.44' NORTH OF
QUARTER CORNER. FOUND STAKE AND STONE
ON CORNER. ALSO FOUND STUMPS OF BOTH
BEARING TREES. COR VAR 7-09
WEST ON NORTH LINE OF NW 1/4 SEC 26
ON A VAR 6-58 OFFSET NORTH 15.18'
OFFSET SOUTH 33' AT
2650.56 INTERSECTED WEST BOUNDARY LINE 11.22'
SOUTH OF CORNER FOUND REMAINS OF OLD
STAKE ALSO FOUND SOUTH BEARING TREE AND
REMAINS OF STUMP OF NORTH BEARING TREE
COR. VAR 7-07
- 1875 RUGER VOL 2 PG 201 USED TO SUBDIVIDE SEC 23. STONE
MON. VAR 5-40 2654.52 TO STAKE SURROUNDED BY 4 HH @
CEN OF SEC 23, VAR5-40 5310.36 TO STONE MON @ N 1/4
COR SEC 23
- 1883 RUGER VOL 2 PG 397 STATES NOTHING ABOUT MON. USED
TO SUBDIVIDE NW 1/4 SEC 26. VAR 5-59 TO CEN SEC 26 &
2652.41 TO NW COR SEC 26
- 1907 KERCH VOL 3 PG 43 MON. 2655.1 TO NW COR SEC 26.
- 1938 SUNNY VOL 3 PG 405 FD 6X6 STONE MON 2657 TO FD
STONE GRADED OUT BY HWY DEP IN 1929. RESET SAID MON
BY PROPORTIONATE MEASUREMENTS @ NW COR SEC 26
- 1962 BATTERMAN VOL 4 PG 118 FD MON. USED TO SUBDIVIDE SEC
26
- 1962 BATTERMAN VOL 4 PG 146 FD MON. USED TO SUBDIVIDE SEC
26
- 1975 COMBS CSM VOL 5 PG 2 FD STONE.
- 1977 LEE BK-29 PG11 "STONERIDGE MANOR" CUT STONE. SO-29-
21E 1331.80 TO PIPE @ 1/16TH COR & NO-08-33W 296.70
TO LOT COR.
- 1983 COMBS #5187 FD STONE MON. N88-47-20E TO STONE MON
@ SE COR SEC 23
- 1985 BARNES R-19 FD CUT LIMESTONE. SET CARSONITE POST &
REFERENCED SAME. WEST EDGE OF STONERIDGE SUB LAWN.
IN N/S FENCE LINE & SOUTH OF E/W FENCE GOING WEST.
- 1985 BARNES VOL 6 PG 340 S89-33-08W 2656.99 TO NW COR
SEC 26, SO-55-24E 2663.61 TO CENTER OF SEC 26, &
5326.02 TO S 1/4 COR SEC 26
- 1997 COMBS P-32 PG 400 "STONERIDGE MANOR FIRST
ADDITION" FD LS 5322.69 TO LS @ N 1/4 COR SEC 23.

SHEET 1 OF 3

SEAL
Emb
D. Barnes
NOV 16, 2011

CORNER CODE R-19(2)

UN590 N1/4CORSEC26

- 1999 COMBS #7453 FD CUT STONE MON. NORTH 5322.62 TO FD CUT STONE @ N 1/4 COR SEC 23
- 1999 COMBS CSM VOL 22 PG 326 FD CUT LS 5323.62 TO FD CUT LS @ N 1/4 COR SEC 23
- 2000 KARNS P-32 PG 483 "PINE KNOLL ESTATES" CUT STONE. SO-07-22W 150.00 TO PIPE; THENCE S89-32-00W 50.00 TO SE COR LOT 2
- 2002 COMBS CSM VOL 25 PG 455 STONE. 2663.70 TO DOT MON @ CENTER OF SEC 26
- 2003 WIDOT R-19(1) CUT LIMESTONE INFORMATION PROVIDED BY WIDOT PROJ 5155-00-22 SHEET 4.4 DATES 4-10-2003 SO7-17-17E 2662.95 TO TN. 307,363.780; 424,368.580
- 2003 WIDOT USH 14 #
- 2004 WIDOT USH 14 #25366, 25087, 25290, &25289 CUT LIMESTONE. 307,363.780; 424,368.580
- 2005 DALRING P-32 PG 710 "CAPSTONE RIDGE" FD STONE. SO-26-25E 1331.87 & N89-57-45W
- 2008 DALRING CSM VOL 32 PG 262 FD STONES @ NW & N 1/4 COR SEC 26. 2656.97 BETWEEN CORNERS.

FD CUT LIMESTONE, CARSONITE POST, & REFERENCE MONUMENTS.

C) Was the corner restored through acceptance of (1) an obliterated evidence location, or, (2) a found perpetuated location?

ACCEPTED FD L.S.

D) Describe any material discrepancy between the location of the corner as restored or reestablished and the location of that corner as previously restored or reestablished by distance and direction. Show the discrepancy on the plan view drawing under (a), above. Show the distances between the corner as previously restored or reestablished and (1) the corner as restored or reestablished, and (2) to at least 4 of the witness monuments shown on the drawing in (a), above. **NONE**

(E) Was the corner reestablished through lost corner proportionate methods? If so, show the method, including the directions and distances to other public land survey corners used as evidence or used for proportioning the corner location. **NO**

I, **Donald Barnes**, hereby certify that the corner location as identified by the corner code index was determined by me under my direction and control and that this U.S. Public Land Survey Monument Record is correct and complete to the best of my knowledge and belief.

SEAL

Donald Barnes

Nov 16, 2011

SHEET 2 OF 3

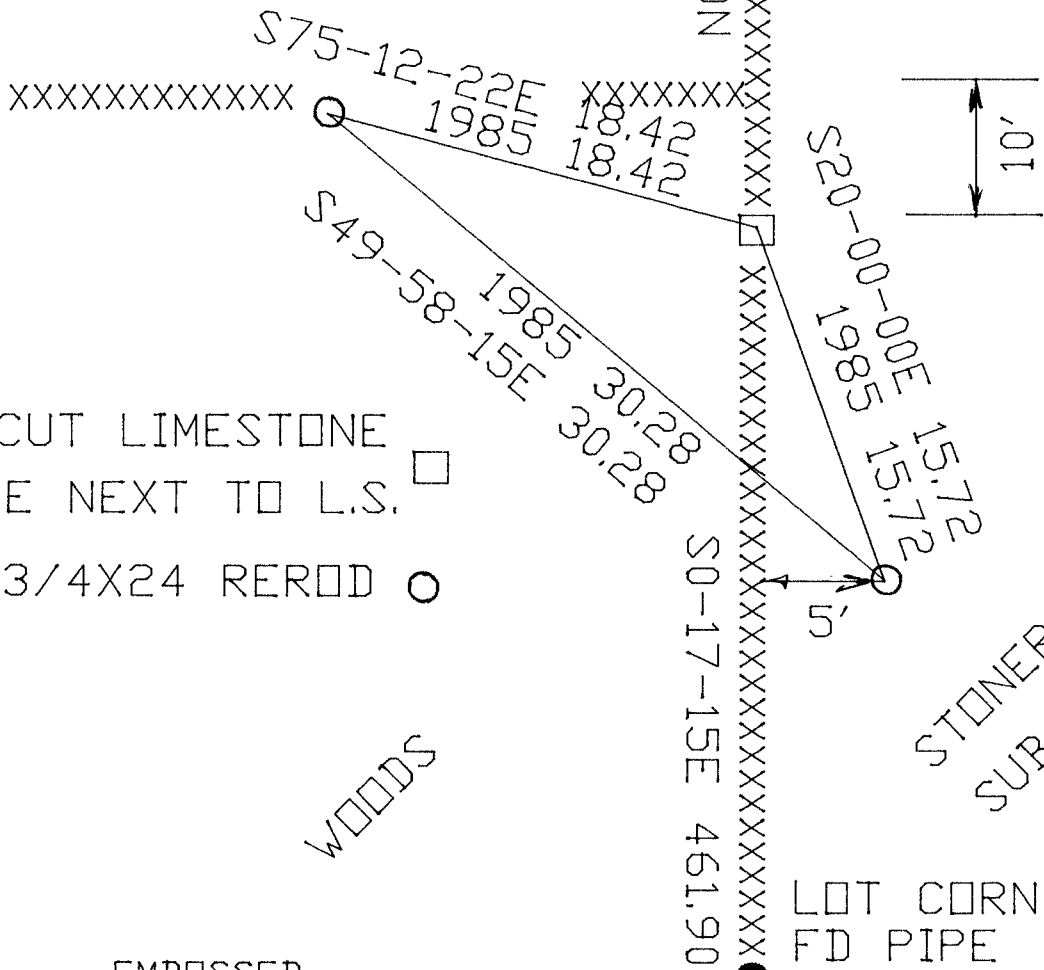
CORNER CODE R-19(2)

A.E. 7.08 REQUIREMENT

NW LOT
COR
FD PIPE
S 1/4 COR
SEC 23
UNION TWP
T4N R10E

1985 BARNES R-19
1985 BARNES FB#2 PG 8

FIELD



FD CUT LIMESTONE
CARSONITE NEXT TO L.S.
3/4X24 REROD

WOODS

STONERIDGE
SUB.

LOT CORNER
FD PIPE
SHEET 3 OF 3

EMBOSSSED
SEAL
Donald Barnes
Nov 16, 2011

R-19(2)