

Paper weight-110# (minimum)

Black nonfading ink required

# U.S. PUBLIC LAND SURVEY MONUMENT RECORD

For Public Land Survey Corners In:

WI ADMINISTRATIVE CODE A-E 7.08 REQUIREMENT

T. 4 N. R. 10 E. 4th P.M.

REV 10/23/2004 USMONREC.DWG

### CORNER CODE INDEX

A	2	3	4	5	6	7	8	9	10	11	12	13	14	15	16	17	18	19	20	21	22	23	24	25	A
B		6				5				4				3				2			1				B
C																									C
D																									D
E																									E
F																									F
G																									G
H																									H
I																									I
J																									J
K																									K
L																									L
M																									M
N																									N
O																									O
P																									P
Q																									Q
R																									R
S																									S
T																									T
U																									U
V																									V
W																									W
X																									X
Y																									Y
Z																									Z

UNION TWP  
ROCK COUNTY WI

IF AVAILABLE  
ROCK COUNTY COORDINATES PREFERRED

North \_\_\_\_\_ Elev. \_\_\_\_\_

East \_\_\_\_\_

Hor. Datum \_\_\_\_\_ Vert. Datum \_\_\_\_\_

LATITUDE \_\_\_\_\_ ELLIPS. HT. \_\_\_\_\_

LONGITUDE \_\_\_\_\_

NAD83(91) \_\_\_\_\_ NETWORK ADJ. YR \_\_\_\_\_

GPS (X) \_\_\_\_\_ TRAVERSE (X) \_\_\_\_\_

BASED ON THE FOLLOWING CONTROL:

1 2 3 4 5 6 7 8 9 10 11 12 13 14 15 16 17 18 19 20 21 22 23 24 25  
PLACE MONUMENT SYMBOL  AT PROPER LOCATION ON ABOVE INDEX

CORNER MONUMENT

WITNESS MONUMENT

BEARINGS ARE BASED ON: -----

FIELD BOOK \_\_\_\_\_ PAGE # \_\_\_\_\_

SHEET 1 OF 3

SHOW A PLAN VIEW DRAWING DEPICTING THE CORNER MONUMENT AND SURROUNDING PHYSICAL FEATURES, INCLUDING THE EXCAVATION AREA AND DEPTH.

PLANNING & ZONING COMMITTEE ADOPTED THIS FORM ON 12/2/1982

CORNER CODE E 19(1)

**UN530 S1/4CORSEC2**

*(B) Describe any record evidence, monument evidence, occupational evidence, testimonial evidence or any other material evidence you considered, and whether the monument was found or placed.*

**1833 HARRISON EAST ON RAND. BET 2 & 11**

**2640 TEMPY 1/4 SEC**  
**5227.2 INT. E BDY 9.9' N OF P. LAND LEVEL 2ND**  
**RATE TIMBER ALL BURR O. MOSTLY**  
**GRASS & WEEDS**

*WEST COR. BET. SEC 2 & 11*

**2613.6 QUARTER SEC COR. {BURR O 18" S37E**  
**91.74' BURR O 18" N64W 48.84' BURR**  
**O 18 BURR O 18**  
**NOV 7TH 1833**

**1870 RUGER REMON FIELD NOTES (SEPTEMBER) PG 110 WEST ON**  
**NORTH LINE OF NE 1/4 SEC 11 ON A VAR 7-47 AT**

**2601.06' INTERSECTED QUARTER LINE AT QUARTER**  
**CORNER. FOUND OLD STAKE AT CORNER**  
**ALSO FOUND NORTH BEARING TREE AND**  
**STUMP OF SOUTH BEARING TREE.**

*WEST ON NORTH LINE OF NW 1/4 SEC 11 ON A*  
*VAR 7-30 AT*

**2629.77 INTERSECTED WEST BOUNDARY LINE AT**  
**CORNER. FOUND OLD STAKE AND PIECES**  
**OF IRON AT COR. ALSO FD STUMPS OF**  
**BOTH BEARING TREES.**

**1884 RUGER VOL 2 PG 387 2629.77 TO STONE MON @ SW COR**  
**SEC 2, 2601.06 TO STONE MON @ SEC COR SEC 2, 2665.74**  
**TO HH @ CENTER OF SEC 2, & 5209.51 TO STONE MON @ N**  
**1/4 COR SEC 2.**

**1970 BATTERMAN VOL 4 PG 442 FD CUT STONE 4' DEEP.**  
**REFERENCED SAME. SHOWS NORTH OF CENTERLINE.**

**1970 WEIR #5127 FD CUT LS USED FOR SURVEY NEAR NE COR**  
**SEC 11.**

**1970 WEIR CSM VOL 1 PG 317 FD CUT STONE. USED FOR LOT**  
**NEAR NE COR SEC 11.**

**1971 WEIR CSM VOL 2 PG 101 CUT STONE. USED FOR SURVEY IN**  
**NE 1/4 SEC 11.**

**1975 WILHELM VOL 5 PG 161 & #7008 SET A 5/8" REBAR FROM**  
**COUNTY TIES. SB9-34-27W 2636.50 TO REBAR @ SW COR**  
**SEC 2 & NB9-34-27E 2607.47 TO COUNTY MON. @ SE COR**  
**SEC 2.**

**1984 BARNES E-19 FD NAIL THAT IS IN HARMONY WITH FD REC**  
**TIES.**

**1988 COMBS CSM VOL 13 PG 327**  
**FD MAG NAILS & REFER. MONUMENTS.**

**2008 LATHROP CSM VOL 32 PG 237 FD PK. SO-03-43E 5355.05**  
**TO STONE @ S 1/4 COR SEC 11. SB9-47-50W 33.00 TO NE**  
**COR LOT. SB947-50W 2632.81 TO NW COR SEC 11. 50.00**  
**R/W.**

**2008 LATHROP #16081 OUT FOR MICROFILMING**

**PRIOR TO RESURFACING I FOUND A MAG NAIL, NORTH REF. PIPE,**  
**NW REF. BOLT, & SW REF. PIPE.**

*Donald Barnes*  
*8-06-2009*

UN530 S1/4CORSEC2

C) Was the corner restored through acceptance of (1) an obliterated evidence location, or, (2) a found perpetuated location?

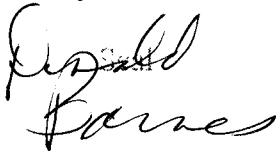
ACCEPTED FD MAG NAIL. PERPETUATES THE FD BUT LIMESTONE.

D) Describe any material discrepancy between the location of the corner as restored or reestablished and the location of that corner as previously restored or reestablished by distance and direction. Show the discrepancy on the plan view drawing under (a), above. Show the distances between the corner as previously restored or reestablished and (1) the corner as restored or reestablished, and (2) to at least 4 of the witness monuments shown on the drawing in (a), above.

NONE

(E) Was the corner reestablished through lost corner proportionate methods? If so, show the method, including the directions and distances to other public land survey corners used as evidence or used for proportioning the corner location.

I, DONALD BARNES, hereby certify that the corner location as identified by the corner code index was determined by me under my direction and control and that this U.S. Public Land Survey Monument Record is correct and complete to the best of my knowledge and belief.

  
Donald Barnes

Emboss

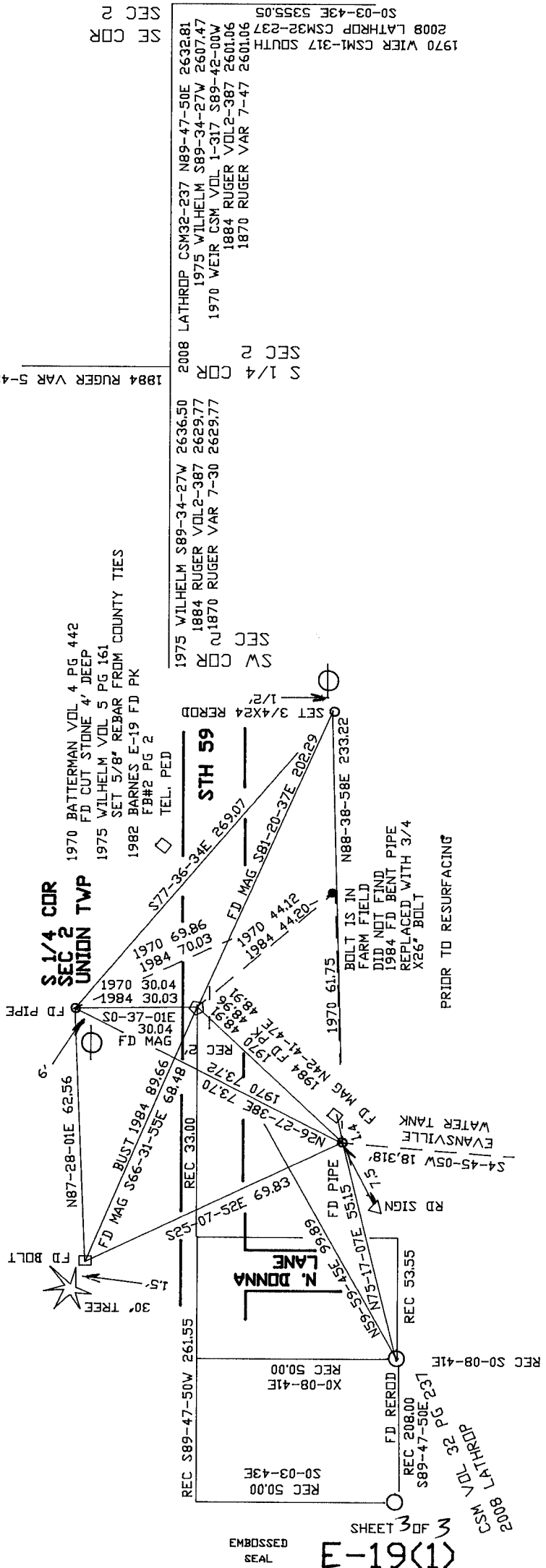
8-06-2009

SHEET 2 OF 3

CORNER CODE  
A.E. 7.08 REQUIREMENT

**E-19(1)**

Donald Barnes  
8-6-2009



EMBOSSED SEAL

E-19(1)

SHEET 3 OF 3

2008 LATHROP CSM VOL 36 PG 231

REC 208.00

REC 50.00

REC 53.55

REC 50.00

REC 50.00

REC 50.00

REC 50.00

REC 50.00

REC 50.00

REC 50.00

REC 50.00

REC 50.00

REC 50.00

REC 50.00

REC 50.00

REC 50.00

REC 50.00

REC 50.00

REC 50.00

REC 50.00

REC 50.00

REC 50.00

REC 50.00

REC 50.00

REC 50.00

REC 50.00

REC 50.00

REC 50.00

REC 50.00

REC 50.00

REC 50.00

REC 50.00

REC 50.00

REC 50.00

REC 50.00

REC 50.00

REC 50.00

REC 50.00

SEC 2

1970 WIER CSM1-317 SOUTH  
2008 LATHROP CSM32-237  
S0-03-43E 5355.05

S 1/4 COR  
2008 LATHROP CSM32-237 N89-47-50E 2632.81  
1975 WILHELM S89-34-27W 2607.47  
1970 WEIR CSM VOL 1-317 S89-42-00W  
1884 RUGER VOL2-387 2601.06  
1870 RUGER VAR 7-47 2601.06

1884 RUGER VAR 5-48 2665.74

SW COR  
1975 WILHELM S89-34-27W 2636.50  
1884 RUGER VOL2-387 2629.77  
N 1870 RUGER VAR 7-30 2629.77

1970 BATTERMAN VOL 4 PG 442  
FD CUT STONE 4' DEEP  
1975 WILHELM VOL 5 PG 161  
SET 5/8" REBAR FROM COUNTY TIES  
1982 BARNES E-19 FD PK  
FB#2 PG 2  
TEL. PED

STH 59

PRIOR TO RESURFACING

BOLT IS IN FARM FIELD  
DID NOT FIND  
1984 FD BENT PIPE  
REPLACED WITH 3/4  
X26" BOLT

EVANSVILLE WATER TANK  
S4-45-05W 18.318

RD SIGN

N. DONNA LANE

30' TREE

FD BOLT

FD PIPE

6'

S 1/4 COR  
SEC 2  
UNION TWP

1970 BATTERMAN VOL 4 PG 442  
FD CUT STONE 4' DEEP  
1975 WILHELM VOL 5 PG 161  
SET 5/8" REBAR FROM COUNTY TIES  
1982 BARNES E-19 FD PK  
FB#2 PG 2  
TEL. PED