

Paper weight-110# (minimum)

Black nonfading ink required

U.S. PUBLIC LAND SURVEY MONUMENT RECORD

For Public Land Survey Corners In:
T. 4 N. R. 10 E. 4th P.M.
CORNER CODE INDEX

WI ADMINISTRATIVE CODE A-E 7.08 REQUIREMENT
REV 10/23/2004 USMONREC.DWG

UNION TWP

ROCK COUNTY WI

IF AVAILABLE
ROCK COUNTY COORDINATES PREFERRED

A	1	2	3	4	5	6	7	8	9	10	11	12	13	14	15	16	17	18	19	20	21	22	23	24	25	A
B																										B
C																										C
D																										D
E																										E
F																										F
G																										G
H																										H
J																										J
K																										K
L																										L
M																										M
N																										N
O																										O
P																										P
Q																										Q
R																										R
S																										S
T																										T
U																										U
V																										V
W																										W
X																										X
Y																										Y
Z																										Z

PLACE MONUMENT SYMBOL AT PROPER LOCATION ON ABOVE INDEX

North _____ Elev. _____

East _____

Hor. Datum _____ Vert. Datum _____

LATITUDE _____ ELLIPS. HT. _____

LONGITUDE _____

NAD83(91) _____ NETWORK ADJ. YR 2010

GPS (X) _____ TRAVERSE (X) X

BASED ON THE FOLLOWING CONTROL:

CORNER MONUMENT

WITNESS MONUMENT

(a) BEARINGS ARE BASED ON: ROCK COUNTY PROJECTION

FIELD BOOK _____ PAGE # _____
OR OBSERVATION SHEET _____

SHEET 1 OF 5

SHOW A PLAN VIEW DRAWING DEPICTING THE CORNER MONUMENT AND SURROUNDING PHYSICAL FEATURES, INCLUDING THE EXCAVATION AREA AND DEPTH.

PLANNING & ZONING COMMITTEE ADOPTED THIS FORM ON 12/2/1982

CORNER CODE V-13(1)

UN607 NECORSEC33

(B) Describe any record evidence, monument evidence, occupational evidence, testimonial evidence or any other material evidence you considered, and whether the monument was found or placed.

- 1833 HARRISON T4N R10E 4TH MER NORTH BETWEEN SECS 33 & 34
2640.00 QUARTER SEC. COR {BURR O 12 S61W 29.04'; BLK O 8 N31E? 19.14' BURR O 12 & BLK O 8} MARKED
5280.00 COR TO SEC 27,28,33,34 {BURR O 12 S65E 168.96'; BURR O 12 S68W 56.1'; BURR O 12 N55W 53.46'; BURR O 10 N25E 143.88' LAND LEVEL 2ND RATE TIMBER ? BURR & RED O MOSTLY SCRUBS GRASS & WEEDS.
- 1833 HARRISON T4N R10E 4TH MER EAST BET. SECS 27 & 34
2640.00 TEMPY 1/4 SEC COR
5220.60 INT E BDY 7.92' N OF P LAND LEVEL 2ND RATE TIMBER BURR & RED O. MOSTLY SCRUB GRASS & WEEDS
WEST COR WEST
1197.24 BURR O 12
2610.30 QUARTER SEC COR {BURR O 28 N69W 39.6'; BURR O 24 S75W 12.54' BURR O 28 & BURR O 24} MARKED
5220.60 SEC COR.
- 1833 HARRISON T4N R10E 4TH MER EAST BET. SECS 28 & 33
2640.00 TEMPY 1/4 SEC COR
5256.24 INT E BDY 11.22 N OF P LAND ROLLING 2ND RATE TIMBER ALL BURR O
WEST COR WEST BET SECS 28 & 33
2614.92 QUARTER SEC COR {BURR O 12 S63W 40.92'; BURR O 18 N61E 33.66' BURR O 12 & BURR O 18} MARKED
5256.24 SEC COR
- 1833 HARRISON T4N R10E 4TH MER. NORTH BETWEEN SECS 27 & 28
1089.00 ENTER SMALL PRAIRIE
2409.0 LEAVE IT E & W
2640.00 QUARTER SEC COR. [RED O 12 N64W 22.44'; W.O. 8 N36E 16.5' W.O 12 & WO 8} MARKED
5280.00 COR TO SECS 21,22,27,28 {W.O 18 N52W 5.94'; W.O 18 N8E 15.18' {RED O 12 S30E 42.24'; W.O 18 S53W 50.16'
LAND LEVEL 2ND RATE TIMBERED WITH W. RED & BURR ASPEN. UNDERGROWTH SCRUBS GRASS & WEEDS.
- 1855 CHURCH VOL 1 PG 45 GOVERNMENT TREES DO NOT AGREE MADE OTHERS BR O 18 S64W 56.1' & BR. O. 14 S68-30E 166.98'. 2629.44 TO N 1/4 COR SEC 34 & 2657.16 TO W 1/4 COR SEC 34
- 1870 RUGER AUG REMON-77 EAST ON SOUTH LINE OF SW 1/4 SEC 28 ON A VAR 6-50 OFFSET NORTH 12.54' AT
2623.67 INTERSECTED QUARTER LINE 15.18' NORTH OF QUARTER CORNER. FD OLD STAKE IN CORNER. ALSO FD STUMP OF EAST BEARING TREE. COR VAR 6-46
EAST ON SOUTH LINE OF SE 1/4 SEC 28 ON A VAR 7-40 OFFSET NORTH 7.26'; OFFSET SOUTH 36.08' OFFSET NORTH 27.88' AT
2666.40 INTERSECTED EAST BOUNDARY LINE 24.42' NORTH OF CORNER. COR VAR 7-10

SEAL

Donald
Baines
OCT 29 2011

SHEET 1 OF 5

CORNER CODE V-12(1)

UN607 NECORSEC33

1870 RUGER AUG REMON-69 SOUTH ON WEST LINE OF NW 1/4 SEC 34 ON A VAR 7-06 OFFSET EAST 17.82' AT

2663.92 INTERSECTED QUARTER LINE 13.2' EAST OF QUARTER CORNER. FOUND OLD STAKE AT CORNER ALSO FOUND STUMP OF NORTH BEARING TREE AND REMAINS OF STUMP OF SOUTH BEARING TREE. COR VAR 7-12

SOUTH ON WEST LINE OF SW 1/4 SEC 34 ON A VAR 7-10 OFFSET EAST 13.04' AT

2661.34 INTERSECTED SOUTH BOUNDARY LINE 17.00' EAST OF CORNER AS SET BY LOCKE TESTED IT AND FOUND IT CORRECTED. COR VAR 7-05'

1870 RUGER AUG 18 REMON-69 WEST ON NORTH LINE OF NE 1/4 SEC 34 ON A VAR 7-20 OFFSET SOUTH 14.52' AT

2627.79 INTERSECTED QUARTER LINE 27.06' SOUTH OF QUARTER CORNER. FOUND OLD STAKE AT CORNER. ALSO FOUND STUMP OF NORTH BEARING TREE. COR VAR 7-04'

WEST ON NORTH LINE OF NW 1/4 SEC 34 ON A VAR 6-45 OFFSET NORTH 9.24' OFFSET SOUTH 28.71' OFFSET NORTH 1.32' OFFSET NORTH 3.63' AT

2620.53 INTERSECTED WEST BOUNDARY LINE 13.86' SOUTH OF CORNER FOUND OLD STAKE AT CORNER ALSO FOUND STUMP OF WEST BEARING TREE COR. VAR 6-46'

1870 RUGER AUG REMON-69 SOUTH ON WEST LINE OF NW 1/4 SEC 34 ON A VAR 7-06 OFFSET EAST 17.82' AT

2663.93 INTERSECTED QUARTER LINE 13.2' EAST OF QUARTER CORNER. FOUND OLD STAKE AT CORNER ALSO FOUND STUMP OF NORTH BEARING TREE AND REMAINS OF STUMP OF SOUTH BEARING TREE. COR VAR 7-12

SOUTH ON WEST LINE OF SW 1/4 SEC 34 ON A VAR 7-10 OFFSET EAST 13.04' AT

2661.35 INTERSECTED SOUTH BOUNDARY LINE 17.00' EAST OF CORNER AS SET BY LOCKE TESTED IT AND FOUND IT CORRECTED. COR VAR 7-05'

1870 RUGER AUG REMON-71 NORTH ON WEST LINE OF SW 1/4 SEC 27 ON A VAR 7-20 OFFSET EAST 3.96' AT

2659.47 INTERSECTED QUARTER LINE 9.9' EAST OF QUARTER CORNER. FOUND STONE ON CORNER. ALSO FOUND REMAINS OF BOTH BEARING STUMPS. COR. VAR 7-28'

REMON-75 AUGUST 22, 1870 NORTH ON WEST LINE OF NW 1/4 SEC 27 ON A VAR 7-5 OFFSET EAST 2.64' AT

2670.69 INTERSECTED NORTH BOUNDARY LINE 22.44' EAST OF CORNER. FOUND REMAINS OF OLD STAKE. ALSO FOUND STUMPS OF BOTH BEARING TREES. COR VAR 8-15

1883 RUGER BK 4 PG 34 PLAT OF FIELD'S & SMITH ADDITION TO EVANSVILLE" NEED TO READ LEGAL IN ORIG SIZE PLAT

1928 PARSONS BK10 PG 47 ASSESSORS PLAT SHEET 3 OF 7. STATES NOTHING ABOUT MON.

1960 BATTERMAN VOL 4 PG 42 FD CUT STONE MON. 1335.28 TO PIPE @ SW COR OF THE E 1/2 OF THE SE 1/4 OF SEC 28. 2670.56 TO CUT STONE @ S 1/4 COR SEC 28

1960 BATTERMAN #6391 FD CUT STONE MON. 2670.56 TO CUT STONE @ S 1/4 COR SEC 28, 2666.16 TO E 1/4 COR SEC 28, & ANGLE 89-38-00 FROM S 1/4 COR TO E 1/4 COR SEC 28

1960 BATTERMAN MC EWEN & PULLEN'S ADDITION TO EVANSVILLE" #8280, #2196, & 10024 FD CUT STONE NORTH & N89-38-00W 2670.56 TO FD CUT STONE @ S 1/4 COR SEC 28.

SHEET 2 OF 5

CORNER CODE V-12(1)

SEAL
ENG
Donald Barnes
OCT 20, 2011

UN607 NECORSEC33

- ANGLE 89-38-00 @ SE COR SEC 28 FROM S 1/4 TO E 1/4
COR SEC 28
- 1960 BATTERMAN CSM VOL1 PG 47 LS
- 1963 COMBS VOL 4 PG 149 150? #6982 FD CUT STONE &
WESTERLY 1335.28 TO FD PIPE IN OLD "92" & SOUTHERLY
598 TO SET PIPE.
- 1965 BATTERMAN BK 23 PG 2 MAY ADDITION. CUT STONE. NORTH
628.14
- 1965 BATTERMAN BK 23 PG 3 KELLEY'S ADDITION. CUT STONE
NORTH 628.14
- 1966 BATTERMAN VOL 4 PG 289 SEE PATES 325 & 385 2670.56
TO S 1/4 COR SEC 28
- 1966 THOM BK 23 PG 19 "DARWOOD ADD" FD CUT STONE
WESTERLY 1335.28 TO SET PIPE. 2670.56 TO CUT STONE @
S 1/4 COR SEC 28..
- 1966 BATTERMAN VOL 4 PG 296 SHOWS PIPE WESTERLY 667.64 &
628.14 NORTHERLY
- 1967 BATTERMAN VOL 4 PG 325 STATES NOTHING ABOUT MON.
2666.16 TO E 1/4 COR SEC 28, 2670.56 TO S 1/4 COR SEC
28, & ANGLE 89-38 @ SE COR SEC 28 FROM S 1/4 COR TO E
1/4 COR OF SEC 28
- 1968 JENSON CITY #6990 FD STONE 0.35' NORTH OF IP. TIES TO
SCHOOL BUILDINGS.
- 1968 CARRINGTON BK 24 PG 19 MERLIN FRANCIS PLAT. STONE
- 1969 CARRINGTON #5258 CONC. MON. SOUTHERLY 198.0X
- 1974 SCHROEDER CSM VOL 4 PG 124 STATES NOTHING ABOUT
MON @ NE COR SEC 33. N89-37-50W 1335.58 TO PIPE @
1/16TH COR; THENCE FROM 1/16TH COR SO-16-25W 1567.29
- 1974 LEE BK 26 PG 27 MAY NORTH ADDITION. FD CUT STONE @ S
1/4 COR SEC 28 N89-49-30E 1335.28 TO 1/16TH COR;
THENCE NO-32W 1334.87 TO 1/16TH COR.
- 1974 STRAND BK27 PG 12 FIRST ADD TO MERLIN FRANCIS PLAT"
STONE MON.
- 1976 SCHROEDER CSM VOL 5 PG 317 STATES NOTHING ABOUT
MON @ NE COR SEC 33. N89-37-50W 1335.58 TO PIPE @
1/16TH COR; THENCE FROM 1/16TH COR SO-16-25W 1567.29
- 1977 PALSON #6392 CUT STONE . 2631.32 TO PK IN BLACKTOP
RD FROM TIES @ S 1/4 COR SEC 27
- 1977 PAULSON "HUNT & SPENCERS ADDITION EVANSVILLE" #4002
CUT STONE EAST 1481.02 TO WEST BOUNDARY OF LOT 18.
EAST 2631.32 TO PK NAIL SET IN BLACKTOP RD FROM TIES
FURNISHED BY ROCK COUNTY SURVEYOR'S OFFICE @ S 1/4
COR SEC 27
- 1981 JENSON VOL 6 PG 162 DATA SUPPLIED BY WALWORTH
COUNTY SURVYEOR -L. JENSON. FD STONE & REFERENCED
SAME. IP IS 0.35 OF STONE. 105.42 SW OF SW COR OF
ARTS BUILDING.
- 1982 COMBS #5270 STATES NOTHING ABOUT MON. BUT SHOWS
A SQUARE SYMBOL.
- 1985 BARNES V-13 FD CUT LIMESTONE & REFERENCED SAME.
CORNER IS ON LINE WITH E/W UTILITY POLES & ON LINE WITH
EAST FACE OF SHED. 282,512.40; 2,185,655.73 ELEV 913
- 1985 BARNES VOL 6 PG 337 NO-57-18W 2666.57 TO W 1/4 COR
SEC 27 & N89-43-11E 2631.29 TO S 1/4 COR SEC 27
- 1985 BARNES VOL 6 PG 338 N89-43-11E 2631.29 TO N 1/4 COR
SEC 34 & SO-25-58E 2668.37 TO W 1/4 COR SEC 34
- 1985 BARNES VOL 6 PG 339 FD CUT LIMESTONE. NO-57-18W
2666.56 TO FD ALUM @ E 1/4 COR SEC 28, & S89-35-22W
1324.17 TO A PK IN A 1" PIPE @ THE 1/16TH CORNER.
- 1986 COMBS CSM VOL 12 PG 351 FD STONE.
- 1986 COMBS CSM VOL 12 PG 353 STONE @ N 1/4 COR SEC 33 &
NE COR SEC 33

SEAL

EMPOSS

Donald Barnes

OCT 20, 2011

SHEET 3 OF 5

CORNER CODE V-13(1)

UN607 NECORSEC33

- 1987 COMBS CSM VOL 13 PG 56 FD LS @ N 1/4 & NE CORNERS OF SEC 33. NB9-37-50W 1335.58 TO 1/16TH COR.; THENCE @ 1/16TH COR SO-16-25W 601.29
- 1987 COMBS BK 32 PG 33 "REPLAT OF BLOCK 18 ORIGINAL PLAT" ALUM. @ W 1/4 COR SEC 27 SO-06-30W 2666.57 TO LS @ SW COR SEC 27
- 1987 COMBS BK 32 PG 45 JUDD ESTATES REPLAT" FD LS @ S 1/4 & SE COR SEC 28 SB9-49-30W 2670.82 TO S 1/4 COR SEC 28
- 1988 COMBS CSM VOL 13 PG 382 FD LS @ NE & N 1/4 COR SEC 33. WEST 1335.58 TO 1/16TH COR.
- 1988 COMBS CSM VOL 13 PG 485 STATES NOTHING ABOUT MON
- 1990 KARNs CSM VOL 14 PG 291 STATES NOTHING ABOUT MON. WEST 1300.58
- 1990 COMBS BK 32 PG 75 THE GROVE" FD LS @ S 1/4 COR & SE COR SEC 28. WEST 1335.58 & 2671.16 TO S 1/4 COR SEC 28
- 1991 WOODMAN CSM VOL 15 PG 305 FD ALUM.
- 1993 COMBS BK 32 PG 154 THE GROVE FIRST ADDITION" LS 2671.16 TO LS @ S 1/4 COR SEC 28
- 1994 COMBS CSM VOL 18 PG 43 L.S.
- 1995 LATHROP #9361 FD STONE MON. ANGLE 89-50-30 @ NE COR SEC 33 FROM EAST LINE SEC 33 ALONG NORTH EAST LINE OF SEC 33
- 2001 COMBS CSM VOL 24 PG 384 LS 2631.32 TO PK @ N 1/4 COR SEC 34
- 2003 COMBS CSM VOL 27 PG 58 FD LS 2668.26 TO E 1/4 COR SEC 33
- 2004 COMBS CSM VOL 27 PG 151 LS 2631.26 TO PK @ N 1/4 COR SEC 34
- 2004 COMBS BK 32 PG 677 CRULL ESTATES. LS 2668.26 TO ALUM @ W 1/4 COR SEC 34
- 2005 COMBS CSM VOL 29 PG 272 LS 2631.26 TO FD PK @ S 1/4 COR SEC 27

I USED MY RECORD OBSERVATIONS FOR THE TRAVERSE ADJUSTMENT & MONUMENT RECORD DRAWING.

C) Was the corner restored through acceptance of (1) an obliterated evidence location, or, (2) a found perpetuated location?

ACCEPTED FD LIMESTONE.

D) Describe any material discrepancy between the location of the corner as restored or reestablished and the location of that corner as previously restored or reestablished by distance and direction. Show the discrepancy on the plan view drawing under (a), above. Show the distances between the corner as previously restored or reestablished and (1) the corner as restored or reestablished, and (2) to at least 4 of the witness monuments shown on the drawing in (a), above.

NONE

(E) Was the corner reestablished through lost corner proportionate methods? If so, show the method, including the directions and distances to other public land survey corners used as evidence or used for proportioning the corner location.

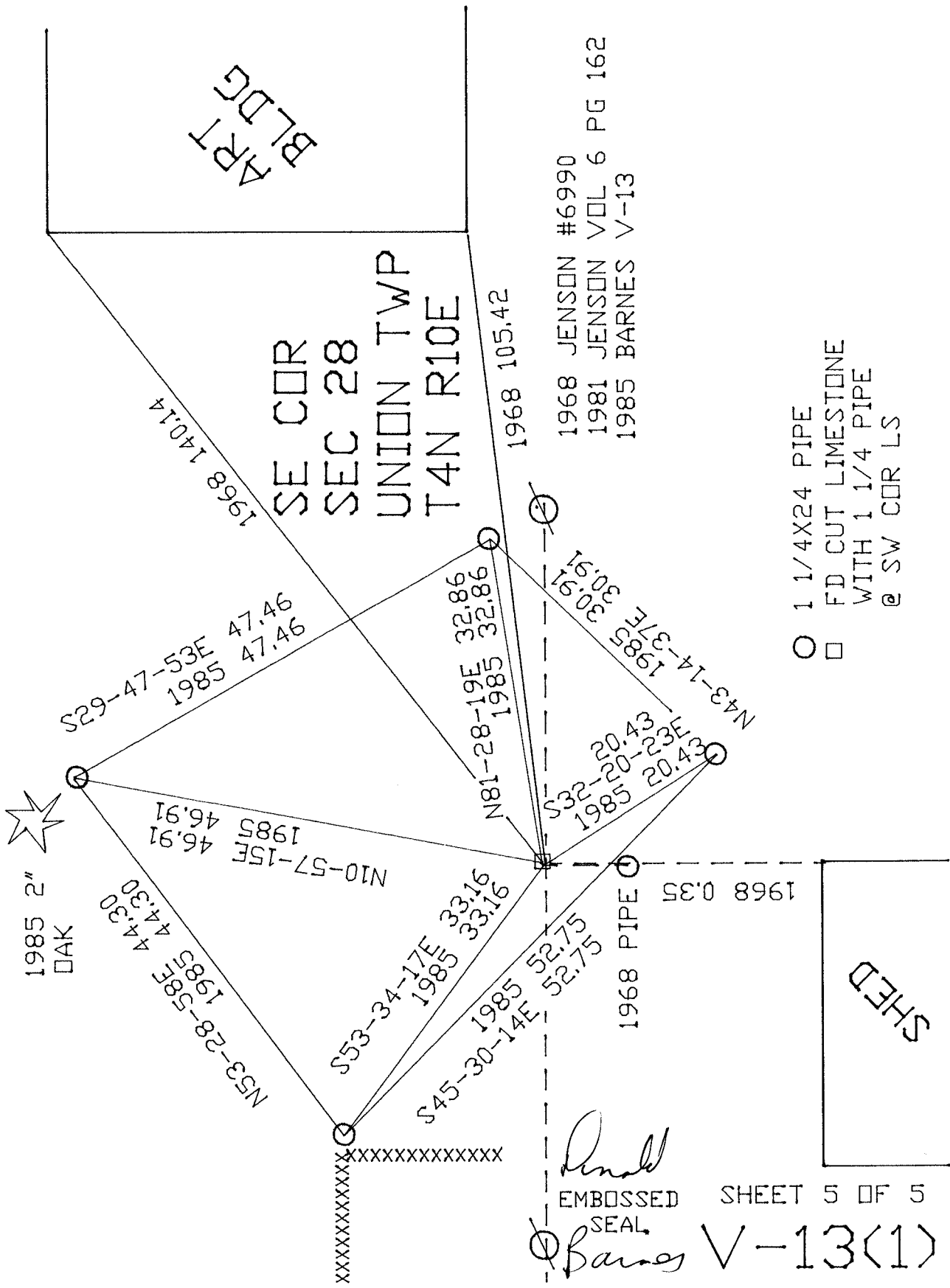
NO

I, Donald Barnes, hereby certify that the corner location as identified by the corner code index was determined by me under my direction and control and that this U.S. Public Land Survey Monument Record is correct and complete to the best of my knowledge and belief.

Donald Barnes
Ember
Oct 20, 2011

SHEET 4 OF 5

CORNER CODE V-13(1)
A.E. 7.08 REQUIREMENT



- 1 1/4X24 PIPE
- FD CUT LIMESTONE WITH 1 1/4 PIPE @ SW COR LS

Donald
 EMBOSSED SHEET 5 OF 5
 SEAL
 Barnes V-13(1)
 OCT 20, 2011