

# PUBLIC LAND SURVEY MONUMENT RECORD

For Public Land Survey Corners in the

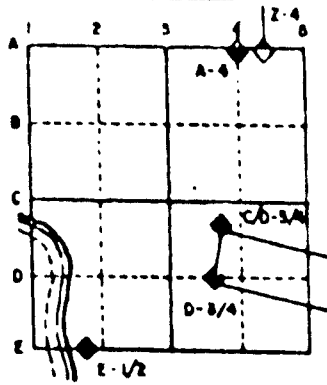
T. A N., R. 10 E.

## CORNER CODE INDEX

	1	2	3	4	5	6	7	8	9	10	11	12	13	14	15	16	17	18	19	20	21	22	23	24	25
A																									
B																									
C	8																								
D					5																				
E																									
F																									
G																									
H	7																								
I																									
J																									
K																									
L																									
M																									
N																									
O																									
P																									
Q																									
R																									
S																									
T	50																								
U																									
V																									
W																									
X																									
Y																									
Z																									

PLACE MONUMENT SYMBOL (◆) AT PROPER LOCATION ON ABOVE INDEX

### EXAMPLE



UNION TWP  
ROCK COUNTY WI

IF AVAILABLE  
STATE PLANE COORDINATES

North (Y) \_\_\_\_\_ Elev. (Z) \_\_\_\_\_  
 East (X) \_\_\_\_\_ Zone \_\_\_\_\_  
 Hor. Datum \_\_\_\_\_ Vert. Datum \_\_\_\_\_

◆ CORNER MONUMENT

○ WITNESS MONUMENT

BEARINGS ARE BASED ON:

(B) Describe any record evidence, monument evidence, occupational evidence, testimonial evidence or any other material evidence you considered, and whether the monument was found or placed.

FOUND 1 5/8 IRON PIN & REFERENCE TIES

C) Was the corner restored through acceptance of (1) an obliterated evidence location, or, (2) a found perpetuated location?

ACCEPTED FOUND PERPETUATED PIN.

D) Describe any material discrepancy between the location of the corner as restored or reestablished and the location of that corner as previously restored or reestablished by distance and direction. Show the discrepancy on the plan view drawing under (a), above. Show the distances between the corner as previously restored or reestablished and (1) the corner as restored or reestablished, and (2) to at least 4 of the witness monuments shown on the drawing in (a), above.

(E) Was the corner reestablished through lost corner proportionate methods? If so, show the method, including the directions and distances to other public land survey corners used as evidence or used for proportioning the corner location.

NO

I, Donald Barnes, hereby certify that the corner points as identified by the corner code index were, in a field survey on, April 12, 1995 established, re-established, monumented, re-monumented, recovered or restored as expressed below and in conformance with the regulations and rules as required in the current manual of survey instructions of the United States Department of Interior, Bureau of Land Management.

seal

*May 9 1995*  
*Donald Barnes*

EMBOSS LAND SURVEYOR SEAL

COUNTY SURVEYOR FILING DATA

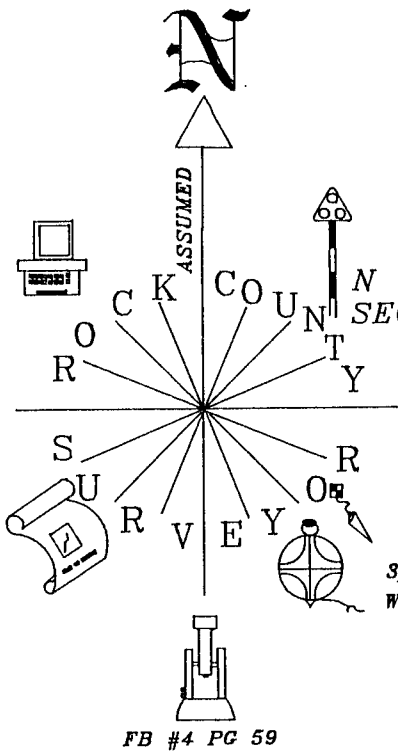
Date of computer entry \_\_\_\_\_

Date microfilmed \_\_\_\_\_

Number of included sheets \_\_\_\_\_  
CORNER CODE

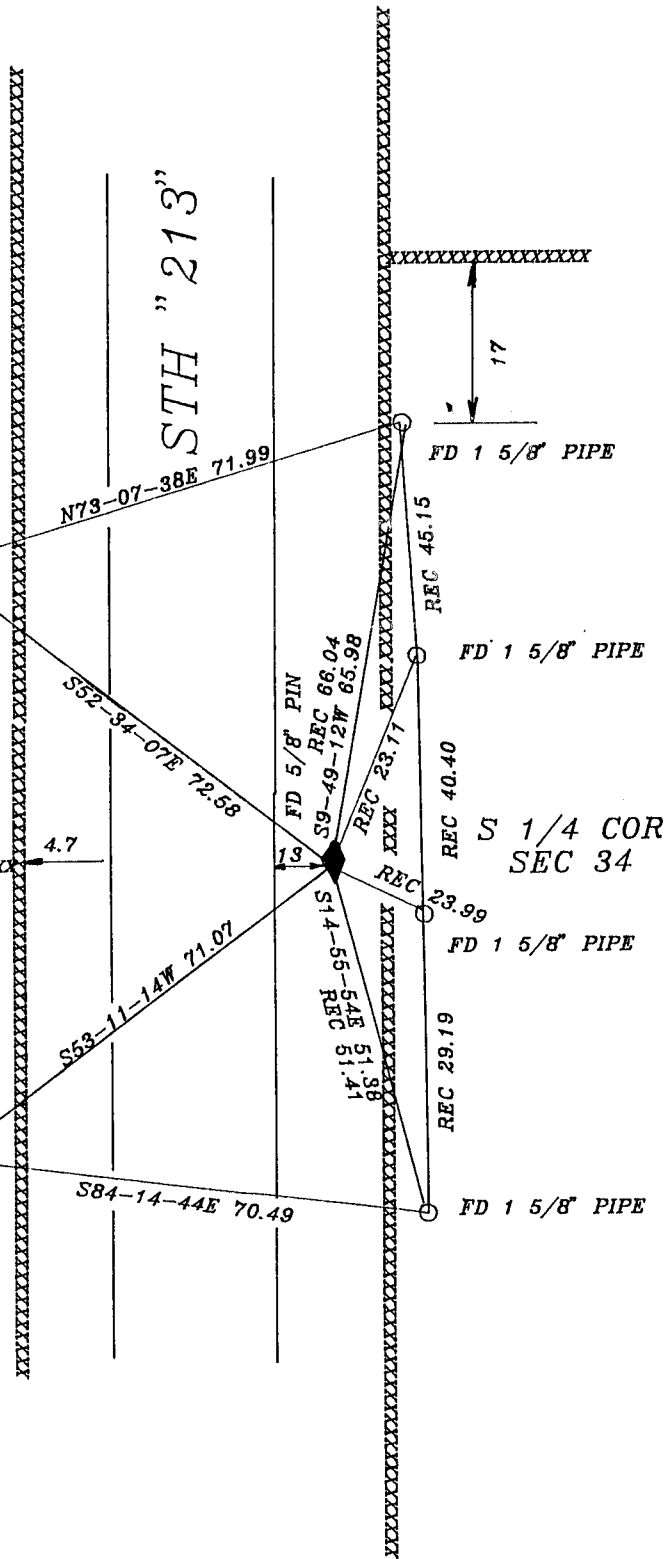
10 F 2

215 (1)



3/4X24 REROD  
WITH PLASTIC CAP

3/4X24 REROD  
WITH PLASTIC CAP



NW COR  
SEC 3  
N89-34-46R 78.94  
LOCKE 79.20  
ORIG 79.20

SW COR  
SEC 34

N89-27-56E 2625.56  
COMBS 2631.85  
ORIG 2640  
CHURCH 1855 2622.18  
RUGER 2622.84 VAR 6-48

N 1/4 COR  
SEC 3

S 1/4 COR  
SEC 34

N89-27-56E 62.33

2639.88  
ORIG 2640  
RUGER 2634.46 VAR 7-09

NE COR  
SEC 3

SE COR  
SEC 34

LOCKE 60.06  
ORIG 60.06  
BARNES 1976 60.04

Donald Barnes  
May 9, 1995

2 OF 2

2/15(1)