

Paper weight-110# (minimum)

Black nonfading ink required

U.S. PUBLIC LAND SURVEY MONUMENT RECORD

For Public Land Survey Corners In:
T. 4 N. R. 10 E. 4th P.M.
CORNER CODE INDEX

WI ADMINISTRATIVE CODE A-E 7.08 REQUIREMENT
REV 10/23/2004 USMONREC.DWG

UNION TWP
ROCK COUNTY WI

IF AVAILABLE
ROCK COUNTY COORDINATES PREFERRED

	1	2	3	4	5	6	7	8	9	10	11	12	13	14	15	16	17	18	19	20	21	22	23	24	25		
A																											A
B																											B
C																											C
D																											D
E																											E
F																											F
G																											G
H																											H
J																											J
K																											K
L																											L
M																											M
N																											N
O																											O
P																											P
Q																											Q
R																											R
S																											S
T																											T
U																											U
V																											V
W																											W
X																											X
Y																											Y
Z																											Z

North _____ Elev. _____

East _____

Hor. Datum _____ Vert. Datum _____

LATITUDE _____ ELLIPS. HT. _____

LONGITUDE _____

NAD83(91) _____ NETWORK ADJ. YR 2010

GPS (X) _____ TRAVERSE (X) X

BASED ON THE FOLLOWING CONTROL:

◆ CORNER MONUMENT

○ WITNESS MONUMENT

BEARINGS ARE BASED ON: --- ROCK COUNTY PROJECTION ---

FIELD BOOK _____ PAGE # _____
OR OBSERVATION SHEET _____

SHEET 1 OF 4

SHOW A PLAN VIEW DRAWING DEPICTING THE CORNER MONUMENT AND SURROUNDING PHYSICAL FEATURES, INCLUDING THE EXCAVATION AREA AND DEPTH.

PLANNING & ZONING COMMITTEE ADOPTED THIS FORM ON 12/2/1982

CORNER CODE Z-25(1)

UN633 SE CORSEC36

(B) Describe any record evidence, monument evidence, occupational evidence, testimonial evidence or any other material evidence you considered, and whether the monument was found or placed.

- 1833 BRINK & MULLETT T3N R10E 4TH MERIDIAN NORTH ON EAST SIDE OF SECTION 1
2640.0 SET QUARTER SECTION POST IN PRAIRIE AND MADE A MOUND OF EARTH & SOD 2 1/2 FEET HIGH & 2 1/2 FEET DIAMETER AT THE BASE.
5280.0 SET TEMPY 6 MILE POST IN PRAIRIE LAND LEVEL RICH LOW PRAIRIE ROSE WILLOW HAZLE GRASS F????
- 1833 (SEP 15) MULLETT & BRINK T4N R11E 4TH MERIDIAN WEST ON SOUTH SIDE SEC 31
2640.0 SET QUARTER SECTION POST IN PRAIRIE AND MADE A MOUND.
5227.20 INTERSECTED RANGE LINE 118.80' SOUTH OF TEMPORARY POST. SET POST AT INTERSECTION CORNER TOWNSHIP 3 & 4 NORTH RANGES 10 & 11 EAST AND MADE A MOUND 4 FEET SQUARE AT BASE AND 4 FEET HIGH.
- 1833 BRINK & MULLETT T4N R10E VAR 8-15 NORTH ON EAST SIDE OF SECTION 36
2640.0 SET QUARTER SECTION POST WHITE OAK 16 S75W 267.96'; BUR OAK 6 N 1 1/2 W 339.24'
2904.0 LEAVE MARSH AND ENTER TIMBER
3432.0 LEAVE TIMBER AND ENTER MARSH
4785.0 LEAVE MARSH AND ENTER TIMBER
5280.0 SET POST CORNER SEC 25 & 36 BUR OAK 14 S47W 49.50'; BUR OAK 14 N66W 45.54' LAND ROLLING SECOND RATE EXCEPT MARSH TIMBER BUR WHITE AND BLACK OAK.
- 1833 (SEP 5-12?) BRINK & MULLETT T4N R10E VAR 8-15E WEST PM ON SOUTH SIDE OF SECTION 36 (PG107)
2640.00 SET QUARTER SECTION POST IN PRAIRIE AND MADE A MOUND
4554.0 LEAVE PRAIRIE
5280.0 SET POST FOR CORNER TO SECTIONS 35 & 36 BUR OAK 16 N44W 145.2'; BUR OAK 12 N37 12E 25.08' LAND LEVEL SECOND RATE PRAIRIE LOW WILLOW GRASS G? & @ WEST OF PRAIRIE BURR OAK & RED ROOT GRASS
- 1835 US PLAT MAP SHOWS A COMMON CORNER AND A DISTANCE OF 2560.8 TO THE E 1/4 COR OF SEC 1 T3NR10E & 2338.38 TO THE COMPUTED POSITION OF THE W 1/4 COR OF SEC 6 T3N11E (CENTER TWPO
- 1855 CHURCH VOL 1 PG 47 STATES NOTHING ABOUT MON. 1311.75 TO N 1/16TH COR OF NE 1/4 OF SEC 1 MAGNOLIA TWP, 2557.50 TO N 1/4 COR SEC 1, 1209.12 TO E 1/16TH COR OF NE 1/4 SEC 1, 2529.12 TO E 1/4 COR SEC 1.
- 1867 LOCKE VOL 1 PG 301 & #5277 SE COR SEC 36 UNION TWP FD STAKE IN END OF DITCH RUNNING EAST. SET BR. OAK STAKE IN MOUND. VAR 7-55' 2650.56 TO E 1/4 COR SEC 36, VAR 6-55 2621.19 TO S 1/4 COR SEC 36. S 1/4 COR SEC 36 DECLARED LOST SET IT FROM SEC CORNERS SET BR. OAK STAKE WITH SMALL HARDHEAD ON N & S IN MOUND (MID POINT & ON LINE)

SHEET 1 OF 4
CORNER CODE Z-25(1)

Ronald Barnes
Nov 1, 2011

UN633 SE CORSEC36

1870 RUGER (SEP) REMONUMENTATION T4N R10E PG 61

NORTH ON EAST LINE OF SE 1/4 SEC 36

ON A VAR 7-21' OFFSET WEST 5.28' AT

2652.54 INTERSECTED QUARTER LINE 0.66' WEST OF
QUARTER CORNER FOUND STAKE
SURROUNDED BY HARD HEAD STONES SET BY
LOCKE AT CORNER. ALSO FOUND REMAINS OF
STUMPS OF BEARING TREES. COR VAR 7-28'
NORTH ON EAST LINE OF NE 1/4 SEC 36
ON A VAR 7-12' OFFSET EAST 8.58' AT

2651.88 INTERSECTED NORTH BOUNDARY LINE 7.92'
EAST OF CORNER. COR VAR 7-11

1870 RUGER (SEP) REMONUMENTATION T4N R10E PG 61

WEST ON SOUTH LINE OF SW 1/4 SEC 36

ON A VAR 6-50 OFFSET NORTH 7.92' AT

2626.80 INTERSECTED QUARTER LINE 16.50' NORTH OF
QUARTER CORNER, FOUND STAKE SET BY
LOCKE AT CORNER. COR VAR 6-39'

WEST ON SOUTH LINE OF SE 1/4 SEC 36

ON A VAR 6-10' OFFSET SOUTH 1.98' AT

2625.15 INTERSECTED EAST BOUNDARY LINE 6.60'
SOUTH OF CORNER FOUND STAKE SET BY
LOCKE AT CORNER. COR. VAR 6-16'

1874 RUGER VOL 2 PG 165 & #3652 STONE MON. 2660.79 TO
W 1/4 COR SEC 31, VAR7-25 2602.16 TO S 1/4 COR SEC
31. S 1/4 COR SEC 31 & SE COR SEC 31 ARE ON LINE
WITH SW COR SEC 31 & S 1/4 COR SEC 32. W 1/4 COR
SEC 31 IS ON LINE WITH NW & SW CORNERS OF SEC 31

1876 RUGER VOL 2 PG 219 & #705 CALLS FOR STONE MON
2333.43 TO W 1/4 COR SEC 6 CENTER TWP

1900 BROWN VOL 2 PG 520 & #6518 FD MON 2614.92 TO N
1/4 COR SEC 6, 2337.72 TO W 1/4 COR SEC 6 (ORIG PLAT
E 1/4 SEC1 IS 222.42 IS SOUTH OF W 1/4 COR SEC 6)

1902 KERCH VOL 3 PG 15 FD MON. BROKEN DROVE 1/2" RAKE
TOOTH UNDER BASE & ROSE PORTION OF MONUMENT IN
ORIGINAL POSITION.

1911 TOWN ROAD RECORD FOR WEARY RD. COMMENCING AT
THE FOUR CORNERS OF THE TOWNS OF UNION,
MAGNOLIA, PORTER, AND CENTER; THENCE RUNNING EAST
ALONG THE SOUTH SIDE OF THE DRAINAGE DITCH
BETWEEN THE TOWNS OF PORTR AND CENTER, UNTIL IT
INTERSECTS A HIGHWAY RINNING NORTH AND SOUTH ON
THE HALF SECTION LINE OF SECTION SIX OF THE TOWN OF
CENTER.

1980 BARNES VOL 6 PG 27 SHOWS REC DISTANCES

1980 BARNES VOL 6 PG 34 CORNER DESTROYED BY LARGE
IRRIGATION DITCH. COMPUTED POSITION IS IN THE
CENTER OF THE DITCH

1994 BARNES A-1 CENTER TWP LOCATION IN IRRIGATION DITCH.
REFERENCED. CORNER IS IN DEEP & WIDE IRRIGATION
DITCH. MONUMENT WAS DESTROYED. DID NOT PLACE
MONUMENT. RESTORED CORNER THROUGH ACCEPTANCE
OF OBLITERATED EVIDENCE LOCATION. USED LOCK'S 1867
DITANCES AROUND SECTION 36. THIS IS IN HARMONY
WITH THE N/S FENCE AT THE SE COR SEC 36 UNION TWP.
THIS IS ALSO IN HARMONY WITH THE RECORD DISTANCES
TO THE W 1/4 COR OF SEC 6 CENTER TWP AND THE FENCE
INTERSECTION THERE. LOCKE (1867) CALLS FOR THE S
1/4 COR SEC 36 TO BE ON LINE WITH THE SW & SE
CORNERS. RUGERS 1870 REMONUMENTATION NOTES
CALL FOR THE CORNER TO BE OFF LINE. THE
ESTABLISHED S 1/4 COR SEC 36 UNION TWP IS 4.8' OFF
LINE. THE FOLLOWING ARE

SHEET 2 OF 4

CORNER CODE Z-25(1)

Donald Barnes
Nov 1, 2011

UN633 SE CORSEC36

THE DIFFERENCES IN VARIANCE IN BEARINGS BETWEEN THE SW TO THE S 1/4 COR AND THE S 1/4 COR TO THE SE CORNERS OF SEC 36:

LOCKE 0-0
RUGER 0-23
NEW BEARINGS 0-15

SE SEC 36 TO S 1/4 COR SEC 36 IS NB9-51-41W 2627.19 (RUGER 2625.15); S 1/4 COR SEC 36 TO SW COR SEC 36 UNION TWP IS NB9-36-51W 2626.51 (RUGER 2626.51); SW COR SEC 31 TO W 1/4 COR SEC 31 IS N00-28-25W 2667.85; SE COR SEC 36 TO POLY @ E 1/4 COR SEC 36 IS N0-28-25W 2656.84 (RUGER 2652.54); NW COR SEC 6 CENTER TWP TO DRAG TOOTH @ W 1/4 COR SEC 6 IS S00-27-22E 2339.82 (RUGER 2333.43, BROWN 2337.72); NE COR SEC 1 TO POLY MON. @ E 1/4 COR SEC 1 IS S00-27-12E 2562.24

1994 BARNES Z-25 & Z-1 IN IRRIGATION DITCH. DID NOT INSTALL A MON. REFERENCED SAME.

1994 BARNES VOL 6 PG 440 NB9-11-07E 2604.99 TO S 1/4 COR SEC 31, N00-28-25W 2667.85 TO W 1/4 COR SEC 31, N00-28-25W 2656.84 TO E 1/4 COR SEC 36, NB9-51-41W 2627.19 TO FD ALUM. @ S 1/4 COR SEC 36.

1995 BARNES VOL 6 PG 441 FD TIES NB9-13-01E 2604.99 TO S 1/4 COR SEC 31, NB9-13-01E 2597.07 TO FD TIES @ N 1/4 COR SEC 6, N00-26-25W 2667.85 TO W 1/4 COR SEC 31.

1995 BARNES A-3 CORNER IN DRAINAGE DITCH. REFERENCED ESTABLISHED COR PER ORIG PLAT DISTANCE JOG OF 7.92. THIS IN HARMONY WITH KERCH'S DISTANCES AND BROWN'S DISTANCES IF ONE ASSUMES BROWN COMPUTED THE DISTANCES WITH THE JOG ON THE WRONG SIDE OF THE S 1/4 COR SEC 31.

N 1/4 COR SEC 6 CENTER TWP TO NB9-15-43E 2659.00 TO NE COR SEC 6 SB9-13-01W 2597.07 TO NW COR SEC 6 NB9-13-01E 7.92 TO S 1/4 COR SEC 31 S 1/4 COR SEC 31 PORTER TWP TO SE COR SEC 31 NB9-15-59E 2658.59 SW COR SEC 31 SB9-13-01W 2604.99

FD TIES & USED MY 1994 OBSERVATIONS.

C) Was the corner restored through acceptance of (1) an obliterated evidence location, or, (2) a found perpetuated location?

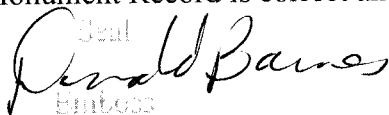
ACCEPTED POSITION AS DETERMINED BY REFERENCE MONUMENTS.

D) Describe any material discrepancy between the location of the corner as restored or reestablished and the location of that corner as previously restored or reestablished by distance and direction. Show the discrepancy on the plan view drawing under (a), above. Show the distances between the corner as previously restored or reestablished and (1) the corner as restored or reestablished, and (2) to at least 4 of the witness monuments shown on the drawing in (a), above.

NONE

(E) Was the corner reestablished through lost corner proportionate methods? If so, show the method, including the directions and distances to other public land survey corners used as evidence or used for proportioning the corner location.

I, **Donald Barnes**, hereby certify that the corner location as identified by the corner code index was determined by me under my direction and control and that this U.S. Public Land Survey Monument Record is correct and complete to the best of my knowledge and belief.

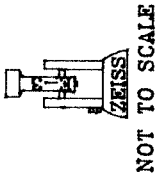
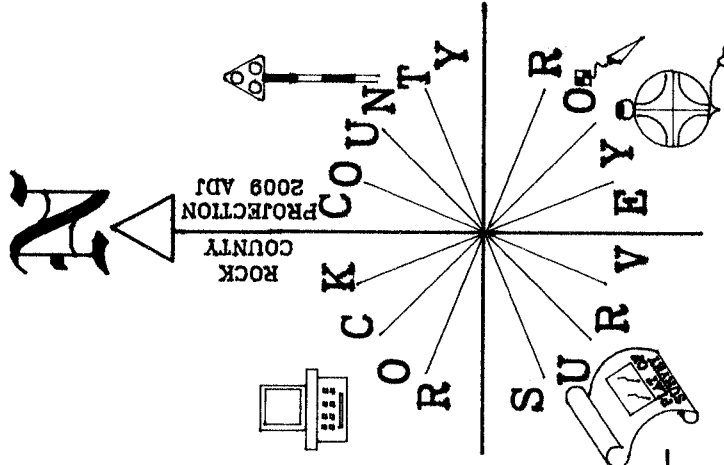

Seal
Emboss

SHEET 3 OF 4

Nov 1, 2011

CORNER CODE Z-25(1)

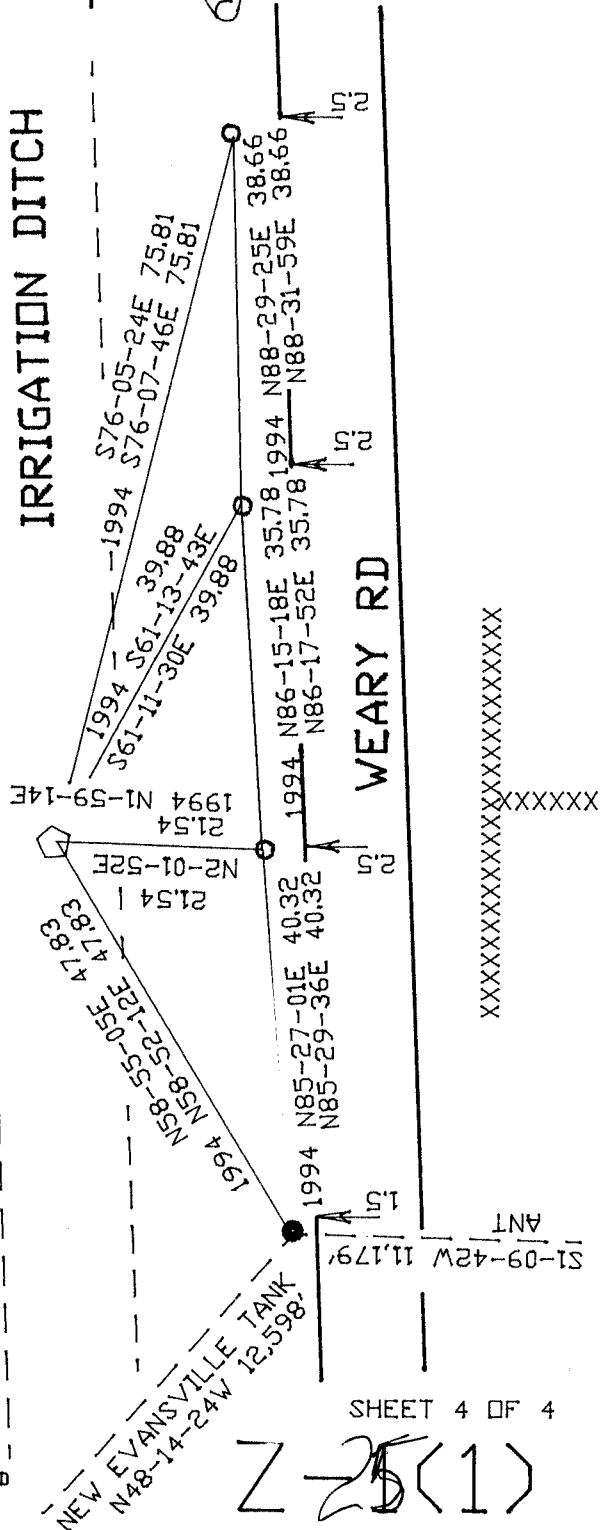
A.E. 7.08 REQUIREMENT



SW COR
SEC 31
PORTER TWP
T4N R11E

1994 BARNES A-1,Z-25,Z-1
MAG. FB#4 PG 31 & 40

- 3/4X24 REROD/
PLASTIC CAP
- 3/4X24 REROD
- ◡ NO MONUMENT



Barnes
EMBOSSSED
SEAL
NOV 3, 2011

SHEET 4 OF 4

Z-25(1)