

Paper weight-110# (minimum)

Black nonfading ink required

U.S. PUBLIC LAND SURVEY MONUMENT RECORD

For Public Land Survey Corners In:
T. 4 N. R. 10 E. 4th P.M.
CORNER CODE INDEX

WI ADMINISTRATIVE CODE A-E 7.08 REQUIREMENT
REV 10/23/2004 USMONREC.DWG

UNION TWP

ROCK COUNTY WI

IF AVAILABLE
ROCK COUNTY COORDINATES PREFERRED

A	1	2	3	4	5	6	7	8	9	10	11	12	13	14	15	16	17	18	19	20	21	22	23	24	25	A
B			6				5					4				3				2				1		B
C																										C
D																										D
E																										E
F																										F
G																										G
H																										H
J																										J
K																										K
L																										L
M																										M
N																										N
O																										O
P																										P
Q																										Q
R																										R
S																										S
T																										T
U																										U
V																										V
W																										W
X																										X
Y																										Y
Z																										Z

PLACE MONUMENT SYMBOL AT PROPER LOCATION ON ABOVE INDEX

North _____ Elev. _____

East _____

Hor. Datum _____ Vert. Datum _____

LATITUDE _____ ELLIPS. HT. _____

LONGITUDE _____

NAD83(91) _____ NETWORK ADJ. YR 2010

GPS (X) _____ TRAVERSE (X)

BASED ON THE FOLLOWING CONTROL:

CORNER MONUMENT

WITNESS MONUMENT

BEARINGS ARE BASED ON: ROCK COUNTY PROJECTION

FIELD BOOK _____ PAGE # _____
OR OBSERVATION SHEET _____

SHEET 1 OF 3

SHOW A PLAN VIEW DRAWING DEPICTING THE CORNER MONUMENT AND SURROUNDING PHYSICAL FEATURES, INCLUDING THE EXCAVATION AREA AND DEPTH.

PLANNING & ZONING COMMITTEE ADOPTED THIS FORM ON 12/2/1982

CORNER CODE V 19 (2)

UN610 N1/4CORSEC35

(B) Describe any record evidence, monument evidence, occupational evidence, testimonial evidence or any other material evidence you considered, and whether the monument was found or placed.

1833 HARRISON T4N R10E 4TH MER. EAST ON RANDOM BET

26 & 35

660.00 CREEK 13.2' CRS S.W.
2640.00 TEMPY 1/4 SEC COR
3300 LEAVE PRAIRIE & ENTER TIMBER
5203.44 INT. E BDY N OF P IN W. EDGE OF PRAIRIE
LAND 1ST 1/2 LEVEL & WET 3
RATE 2ND 1/2 LEVEL 2ND RATE WITH BURR O
TIMBER
WEST COR WEST BET SECS 26 & 35
1232.88 BURR O 12 IN DIAM
2601.72 QUARTER SEC. COR. IN MARSH - POST &
RAISED MOUND
5203.44 INT SEC COR.

1856 CHURCH VOL 1 PG 63 STATES NOTHING ABOUT MON. USED
TO SUBDIVIDE SEC 26. 2655.84 TO CENTER OF SEC 26 &
5311.68 TO N 1/4 COR SEC 26

1865 LOCKE VOL 1 PG 232 & #5199 FD OLD POST IN MOUND
2656.83 TO CENTER OF SEC 35 & 5313.66 TO N 1/4 COR
SEC 26

1870 RUGER AUG REMON-64 WEST ON NORTH LINE OF NE 1/4 SEC
35 ON A VAR 7-10 OFFSET SOUTH 15.51' COULD
FIND NO TRACE OF NORTH QUARTER CORENR.
CONTINUED WEST ON SAME VARIATION AS ABOVE
GIVEN AT

5239.74 INTERSECTED WEST BOUNDARY LINE 29.04'
SOUTH OF CORNER. COR VAR 7-01
ESTABLISHED NORTH QUARTER CORNER AT A
POINT IN A TRUE LINE BETWEEN AND EQUI-
DISTANT FROM THE NE & NW CORNERS OF SAID
SECTION IT BEING DISTANT FROM EACH 2619.87'

1902 UNKOWN VOL 3 PG 11 MONUMENT.

1962 BATTERMAN VOL 4 PG 146 FD MON.

1972 COMBS #5272 FD CUT STONE MON. 2623.20 TO FD CUT
STONE @ NE COR SEC 35

1979 SHEARMAN #5213 STATES NOTHING ABOUT MON. N89-32-
46W 2623.53 TO SW COR SEC 26 & N0-00-10E 2662.72 TO
R/R SPIKE @ CENTER OF SEC 26.

1981 COMBS #5276 FD CUT STONE. S0-01-40W 922.71 TO SET
PIN ON SOUTH RAILROAD R/W

1985 BARNES V-19 FD CUT LIMESTONE 1.5' ABOVE GROUND. SET
CARSONITE POST. REFERENCED SAME. 282,571.15;
2,193,543.56 ELEV 892. ON LINE N/S FENCE LINE. FB#2
PG 10. SOUTH REFERENCE PIPE IS STA 108.

1986 COMBS #13389 FD CUT STONE MON. EAST 477.60 TO PIN.

1988 COMBS CSM VOL 13 PG 240 STATES NOTHING ABOUT MON.
NORTH 1863.89 TOWARDS CENTER OF SEC 26

1988 COMBS CSM VOL 13 PG 242 STATES NOTHING ABOUT
MON. NORTH 1863.89 TOWARDS CENTER OF SEC 26

1990 COMBS CSM VOL 14 PG 487 FD STONE. USED R/R SPIKE @
CENTER OF SEC 26 FOR LINE

1993 BIRRENKOTT CSM VOL 16 PG 378 FD CUT STONE. N89-23-
12E 2622.52 TO STONE @ SE COR SEC 26 & N0-56-20W
2662.11 TO FD ALUM @ CENTER OF SEC 26

1996 BARNES VOL 6 PG 340 S89-30-44W 2623.95 TO SW COR
SEC 26, N0-56-14W 2662.41 TO CENTER OF SEC 26, &
5326.02 TO N 1/4 COR SEC 26

SEAL

Donald Barnes

SHEET 1 OF 3

Oct 29, 2011

CORNER CODE V-19(1)
2

UN610 N1/4CORSEC35

- 1998 KNUDSON #8178 SQUARE STONE MON. N89-59-32W
2623.70 TO SQUARE MON @ NW COR SEC 35, N89-52-41E
2622.82 TO SQUARE STONE @ SW COR SEC 25, SO-06-11E
5317.51 TO SQUARE STONE MON @ S 1/4 COR SEC 35, NO-
26-16W 2662.31 TO ALUM @ GEN OF SEC 26.
- 1999 KNUDSON #7227 SQUARE STONE MON. N89-59-32W
2623.70 TO SQUARE MON @ NW COR SEC 35, N89-52-41E
2622.82 TO SQUARE STONE @ SW COR SEC 25, SO-06-11E
5317.51 TO SQUARE STONE MON @ S 1/4 COR SEC 35, NO-
26-16W 2662.31 TO ALUM @ GEN OF SEC 26.
- 2003 WIDOT V-19(1) CUT LIMESTONE PROJ 5155-00-22 SHEET 4.4
DATE 4-10-2003 302,037.760; 424,395.950 NO-18-03W
2581.29 TO T.I.
- 2003 WIDOT #25087, 25290, & 25289 USH 14 CUT LIMESTONE
PROJ 5155-00-22 SHEET 4.4 DATE 4-10-2003
302,037.760; 424,395.950 NO-18-03W 2581.29 TO T.I.
- 2004 WIDOT #25366 USH 14
- 2007 COMBS SUB #14935 ASSESSORS PLAT SHEET #7 FD CUT
LS N89-34-06W 2623.56 TO CUT LS @ SW COR SEC 26

ACCEPTED MY 1985 TIES FOR THE CUT LIMESTONE & USED MY OBSERVATIONS IN THE TWP ADJUSTMENT.

C) Was the corner restored through acceptance of (1) an obliterated evidence location, or, (2) a found perpetuated location?

ACCEPTED FD PERPETUATED LOCATION.

D) Describe any material discrepancy between the location of the corner as restored or reestablished and the location of that corner as previously restored or reestablished by distance and direction. Show the discrepancy on the plan view drawing under (a), above. Show the distances between the corner as previously restored or reestablished and (1) the corner as restored or reestablished, and (2) to at least 4 of the witness monuments shown on the drawing in (a), above.

NONE

(E) Was the corner reestablished through lost corner proportionate methods? If so, show the method, including the directions and distances to other public land survey corners used as evidence or used for proportioning the corner location.

YES, IN 1870 RUGER DECLARED THE CORNER LOST & PLACED THE CORNER ON LINE WITH THE SW & SE CORNERS OF SEC 26 & MIDWAY BETWEEN THEM.

I, Donald Barnes, hereby certify that the corner location as identified by the corner code index was determined by me under my direction and control and that this U.S. Public Land Survey Monument Record is correct and complete to the best of my knowledge and belief.

SEAL

SHEET 2 OF 3

Donald Barnes
OCT 29, 2011

CORNER CODE
A.E. 7.08 REQUIREMENT

V-19(1)
(2)

S 1/4 COR
 SEC 26
 UNION TWP
 T4N R10E

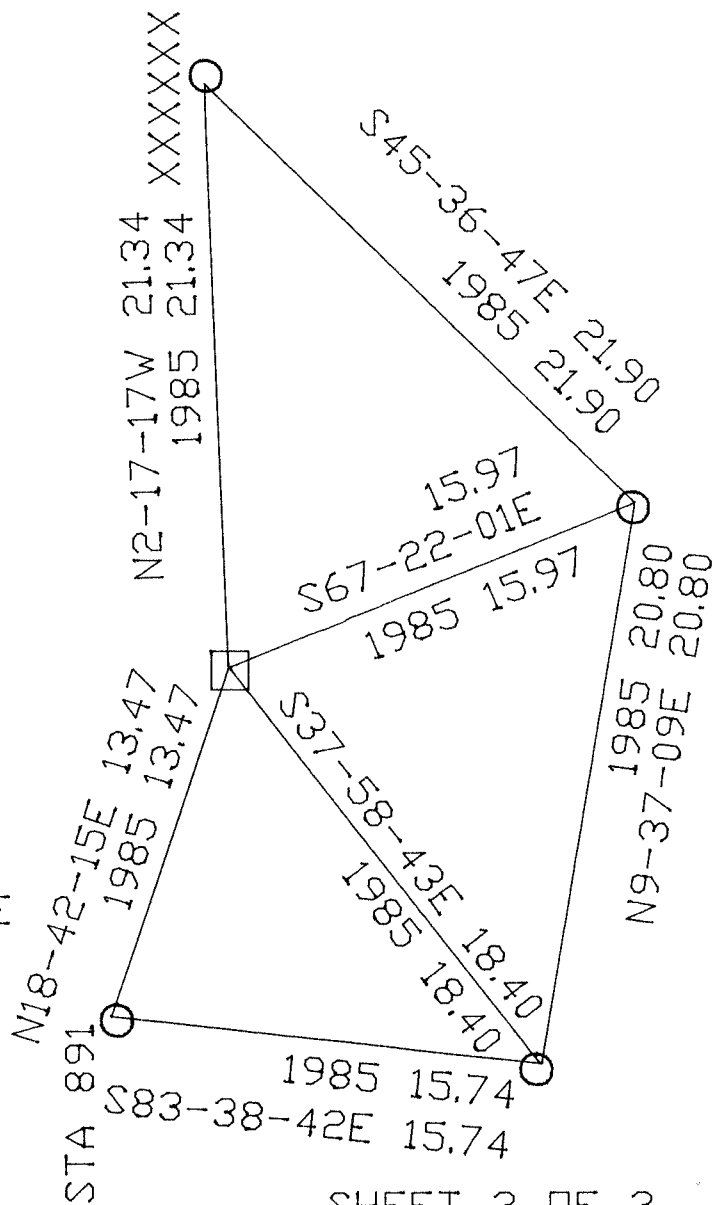
OBSERVATION SHEET #891

1985 BARNES V-19
 FB#2 PG 10

□ CUT LIMESTONE 1.5'
 ABOVE GRADE / CARSONITE
 POST

○ 1985 SET
 1 5/8X24 PIPE

Ronald
 EMBOSSED
 SEAL
Barnes
 OCT 20, 2011



SHEET 3 OF 3

V-19 (Z)