

Paper weight-110# (minimum)

Black nonfading ink required

U.S. PUBLIC LAND SURVEY MONUMENT RECORD

For Public Land Survey Corners In:
T. 4 N. R. 10 E. 4th P.M.
CORNER CODE INDEX

WI ADMINISTRATIVE CODE A-E 7.08 REQUIREMENT
REV 10/23/2004 USMONREC.DWG

UNION TWP
ROCK COUNTY WI

IF AVAILABLE
ROCK COUNTY COORDINATES PREFERRED

A	1	2	3	4	5	6	7	8	9	10	11	12	13	14	15	16	17	18	19	20	21	22	23	24	25	A
B		6				5				4				3				2			1					B
C																										C
D																										D
E																										E
F																										F
G																										G
H																										H
J																										J
K																										K
L																										L
M																										M
N																										N
O																										O
P																										P
Q																										Q
R																										R
S																										S
T																										T
U																										U
V																										V
W																										W
X																										X
Y																										Y
Z																										Z

North _____ Elev. _____

East _____

Hor. Datum _____ Vert. Datum _____

LATITUDE _____ ELLIPS. HT. _____

LONGITUDE _____

NAD83(91) _____ NETWORK ADJ. YR 2010

GPS (X) _____ TRAVERSE (X) X

BASED ON THE FOLLOWING CONTROL:

PLACE MONUMENT SYMBOL **◆** AT PROPER LOCATION ON ABOVE INDEX

◆ CORNER MONUMENT

○ WITNESS MONUMENT

(a)

BEARINGS ARE BASED ON: ROCK COUNTY PROJECTION

FIELD BOOK _____ PAGE # _____

OR OBSERVATION SHEET _____

SHEET 1 OF 3

SHOW A PLAN VIEW DRAWING DEPICTING THE CORNER MONUMENT AND SURROUNDING PHYSICAL FEATURES, INCLUDING THE EXCAVATION AREA AND DEPTH.

PLANNING & ZONING COMMITTEE ADOPTED THIS FORM ON 12/2/1982

CORNER CODE T-9

UN596 W1/4CORSEC28

(B) Describe any record evidence, monument evidence, occupational evidence, testimonial evidence or any other material evidence you considered, and whether the monument was found or placed.

- 1833 HARRISON T4N R10E 4TH MER NORTH BET. SECS 28 & 29
1555.62 WO 18
2640.00 QUARTER SEC COR. {WO 12 S79E 24.42'; WO
18 W 12.54' WO 12 & WO 18} MARKED
5280.00 COR TO SECS 20,21,28,29 {BURR O 10 S64E
273.24'; BURR O 12 S60W 234.96' LAND LEVEL
2ND RATE TIMBER BURR RED & W.O.
UNDERGROWTH SCRUBS, GRASS, & WEEDS.
- 1870 RUGER AUG REMON-77 SOUTH ON WEST LINE OF NW
1/4 SEC 28 ON A VAR 7-05 OFFSET EAST 1.98' AT
2665.41 INTERSECTED QUARTER LINE 5.94' EAST OF
QUARTER CORNER. FOUND OLD STAKE AND BOTH
STUMPS OF BEARING TREES. COR VAR 7-00'
SOUTH ON WEST LINE OF SW 1/4 SEC 28
ON A VAR 7-20 OFFSET EAST 11.22'
OFFSET WEST 19.14' OFFSET EAST 17.16'
AT
2661.28 INTERSECTED SOUTH BOUNDARY LINE 4.62' WEST
OF CORNER FOUND STUMPS OF BOTH BEARING
TREES. ESTABLISHED CORNER FROM STUMPS OF
BEARING TREES. COR VAR 7-38
- 1938 SUNNY VOL 3 PG 373 FD STONE MON. 10.02 AC NEAR
COR. SOUTHERLY 450.8 ALONG SEC LINE THENCE
EASTERLY 992'; THENCE NORTHERLY 450.8 TO E/W 1/4
LINE; THENCE WESTERLY 994 TO W 1/4 COR SEC 28
- 1966 BATTERMAN VOL 4 PG 289 FD CUT STONE BROKEN SET CI
WITH YELLOW GUARD POST. EAST OF N/W FENCE LINE.
2673.60 TO NW COR SEC 28.
- 1967 BATTERMAN VOL 4 PG 325 FD CUT STONE MON .
1966 THOM BK 23 PG 19 "DARWOOD ADD" FD CUT STONE.
1966 LEE #5218 FD CUT STONE MON.
1969 JENSEN ASSESSORS PLAT SHEET 6 SUB #2183. STONE.
1978 KIENBAUM VOL 5 PG 523 FD STONE.
1984 COMBS CSM VOL 11 PG 644 FD STONE.
1986 COMBS CSM VOL 12 PG 359 FD STONE.
1995 COMBS CSM VOL 18 PG 269 FD STONE.
1996 COMBS BK 32 PG 319 "PETTERSON WEST MEADOW" LS. @ W
1/4 COR SEC 28 5329.46 TO ALUM @ E 1/4 COR SEC 28
1996 COMBS BK 32 PG 355 "PETTERSON WEST MEADOW FIRST
ADD. " LS. @ W 1/4 COR SEC 28 5329.46 TO ALUM @ E 1/4
COR SEC 28
1997 COMBS BK 32 PG 406 "WEST KNOLL" LS. @ W
1/4 COR SEC 28 5329.46 TO ALUM @ E 1/4 COR SEC 28
1997 COMBS CSM VOL 20 PG 152 CI. SO-06-35E 2662.66 TO CUT
STONE @ SE COR SEC 29
1997 COMBS CSM VOL 20 PG 288 CI. SO-06-35E 2662.66 TO CUT
STONE @ SE COR SEC 29
1999 COMBS #7377 FD STONE MON. 2673.58 TO R/R SPIKE @
NW COR SEC 28
2002 COMBS BK 32 PG 549 "WEST KNOLL FIRST ADDITION" LS @ W
1/4 COR SEC 28 5329.46 TO ALUM @ S 1/4 COR SEC 28
2006 COMBS CSM VOL 30 PG 262 CI N89-52-25E 1329.2X & S1-
06-43E 2662.75 TO LS @ SW COR SEC 28

REMOVED 4-5' HIGH PILE OF ROCKS WITH BACKHOE. FD C.I.
SURROUNDED WITH LARGE PIECES OF CUT LIMESTONE. TOP OF CI.
IS BROKE OFF.

DEAL
Ronald Barnes
Nov 21, 2001

SHEET 1 OF 3

CORNER CODE T-9

UN596 W1/4CORSEC28

C) Was the corner restored through acceptance of (1) an obliterated evidence location, or, (2) a found perpetuated location?

ACCEPTED FD CI, WHICH PERPETUATES THE CUT LIMESTONE.


D) Describe any material discrepancy between the location of the corner as restored or reestablished and the location of that corner as previously restored or reestablished by distance and direction. Show the discrepancy on the plan view drawing under (a), above. Show the distances between the corner as previously restored or reestablished and (1) the corner as restored or reestablished, and (2) to at least 4 of the witness monuments shown on the drawing in (a), above.

NONE

(E) Was the corner reestablished through lost corner proportionate methods? If so, show the method, including the directions and distances to other public land survey corners used as evidence or used for proportioning the corner location.

NO

I, **Donald Barnes**, hereby certify that the corner location as identified by the corner code index was determined by me under my direction and control and that this U.S. Public Land Survey Monument Record is correct and complete to the best of my knowledge and belief.


NOV 21, 2011

SHEET 2 OF 3

CORNER CODE T-9

A.E. 7.08 REQUIREMENT

OBSERVATION SHEET #585 & 596

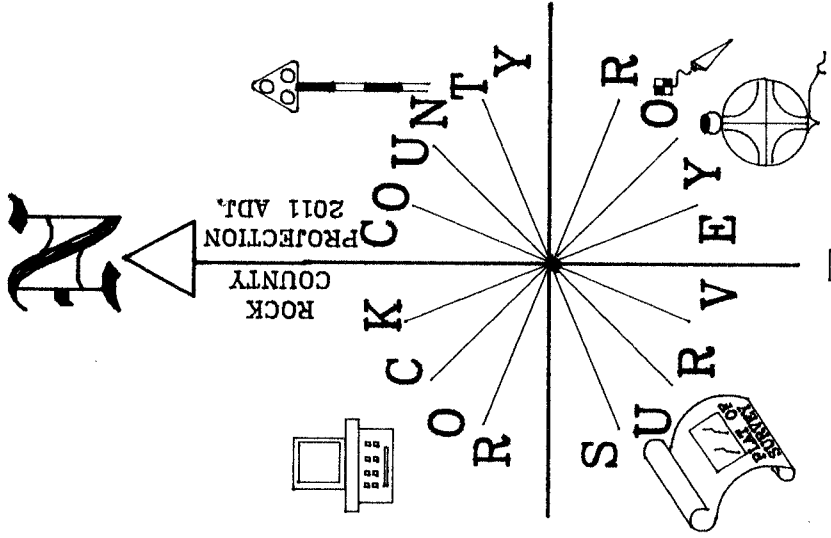
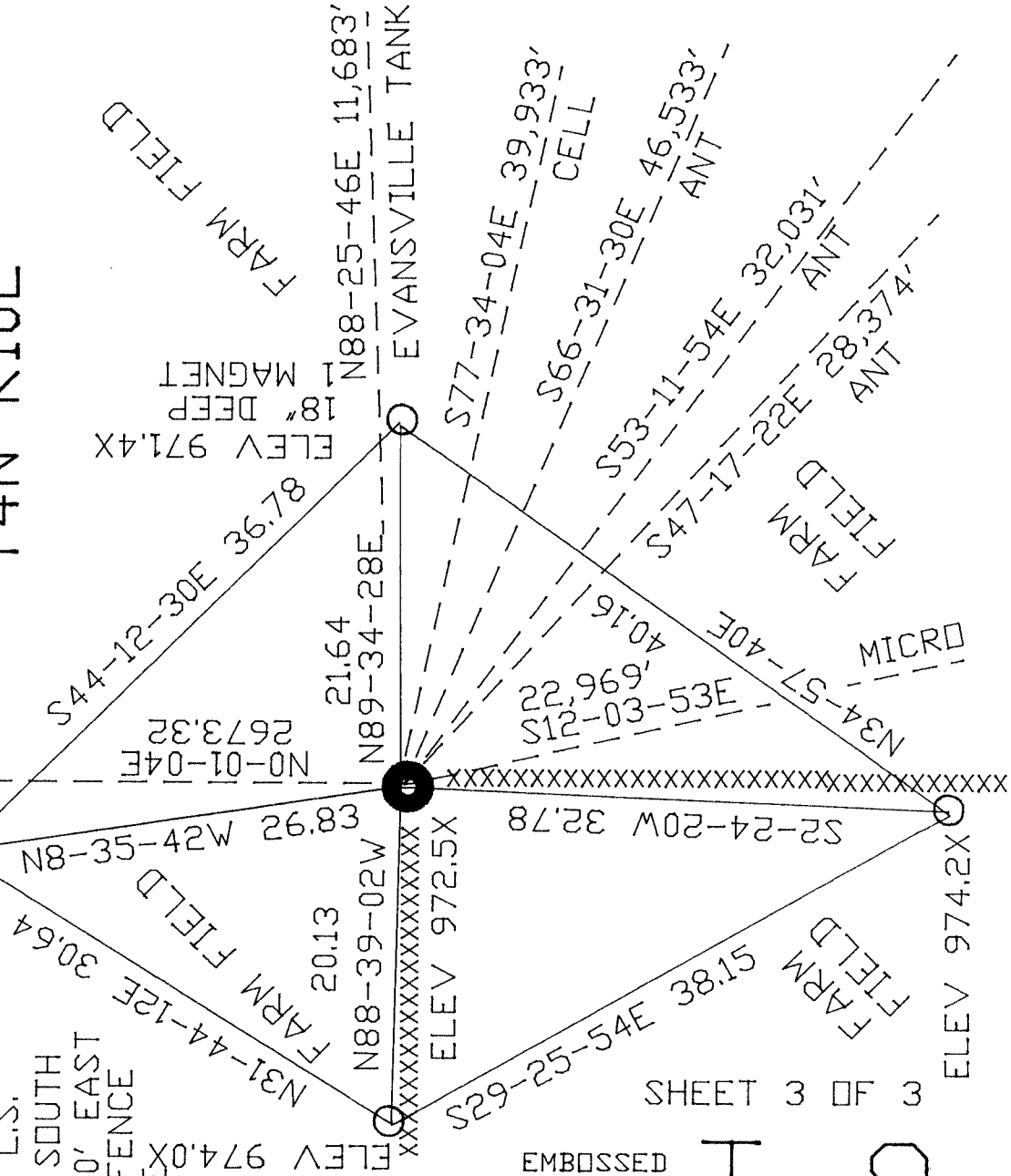
NW COR
SEC 28
FD R/R
ELEV 970.7X

W 1/4 COR
SEC 28
UNION TWP
T4N R10E

○ 1/2X24 REROD

● FD CI MON
SURROUNDED BY
PIECES OF
CUT L.S.
2.0' SOUTH
& 2.0' EAST
OF FENCE
LINEX

4



NOT TO SCALE

SHEET 3 OF 3

EMBOSSED SEAL

T-9

Donald Barnes
Nov 17, 2011