

Paper weight-110# (minimum)

Black nonfading ink required

U.S. PUBLIC LAND SURVEY MONUMENT RECORD

For Public Land Survey Corners In:
T. 4 N. R. 10 E. 4th P.M.
CORNER CODE INDEX

WI ADMINISTRATIVE CODE A-E 7.08 REQUIREMENT
REV 10/23/2004 USMONREC.DWG

UNION TWP
ROCK COUNTY WI

IF AVAILABLE
ROCK COUNTY COORDINATES PREFERRED

A	1	2	3	4	5	6	7	8	9	10	11	12	13	14	15	16	17	18	19	20	21	22	23	24	25	A
B		6				5				4				3				2				1				B
C																										C
D																										D
E																										E
F																										F
G																										G
H																										H
J																										J
K																										K
L																										L
M																										M
N																										N
O																										O
P																										P
Q																										Q
R																										R
S																										S
T																										T
U																										U
V																										V
W																										W
X																										X
Y																										Y
Z																										Z

North _____ Elev. _____

East _____

Hor. Datum _____ Vert. Datum _____

LATITUDE _____ ELLIPS. HT. _____

LONGITUDE _____

NAD83(91) _____ NETWORK ADJ. YR 2010

GPS (X) _____ TRAVERSE (X) X

BASED ON THE FOLLOWING CONTROL:

PLACE MONUMENT SYMBOL AT PROPER LOCATION ON ABOVE INDEX

CORNER MONUMENT

WITNESS MONUMENT

BEARINGS ARE BASED ON: ROCK COUNTY PROJECTION

FIELD BOOK _____ PAGE # _____

OR OBSERVATION SHEET _____

SHEET 1 OF 3

SHOW A PLAN VIEW DRAWING DEPICTING THE CORNER MONUMENT AND SURROUNDING PHYSICAL FEATURES, INCLUDING THE EXCAVATION AREA AND DEPTH.

PLANNING & ZONING COMMITTEE ADOPTED THIS FORM ON 12/2/1982

CORNER CODE A-2

UN504 N1/4CORSEC5

(B) Describe any record evidence, monument evidence, occupational evidence, testimonial evidence or any other material evidence you considered, and whether the monument was found or placed.

- 1833 BRINK SOUTH BOUNDARY OF T5N R10E WEST ON SOUTH SIDE SECTION 32
2304.72 W. OAK 16
2640.00 SET QUARTER SECTION POST BURR OAK 10 N60E 38.28'; BURR OAK 10 N87W 21.78'
2929.74 W. OAK 14
5280.00 SET POST CORNER TO SECTIONS 31 & 32 BURR OAK 16 N62E 59.40'; BUR OAK 14 N48W 42.90' LAND & C SAME
- 1856 CHURCH VOL1 PG 61 BL.0 10 S7 1/4E 108.24'; HICKORY 5 S19W 23.43' VAR 8 2574.00 TO CENTER OF SEC 5 & VAR 8 5214.0 TO S 1/4 COR SEC 5, VAR 8 2779.26 TO NE & NW CORNERS OF SEC 5.
- 1870 RUGER AUG REMON-118 SEPTEMBER 7, 1870 WEST ON NORTH LINE OF NE 1/4 SEC 5 ON A VAR 7-30; OFFSET NORTH 15.18' INTERSECTED QUARTER LINE OF SECTION 32 T5 R10 19.8' NORTH OF QUARTER CORNER. COR VAR 7-36 CONTINUED WEST ON NORTH LINE OF NW QUARTER SECTION 5 ON A VARIATION 7-30; OFFSET NORTH 19.8' OFFSET NORTH 10.56' OFFSET SOUTH 8.58' OFFSET NORTH 5.28 AT 5560.50 INTERSECTED WEST BOUNDARY LINE 7.92' NORTH OF CORNER. FOUND OLD STAKE AT CORNER. ALSO FOUND REMAINS OF THE STUMPS OF THE BEARING TREES. COR. VAR 7-05 ESTABLISHED NORTH QUARTER CORNER OF SECTION 5 ON THE TOWN LINE AND AT A POINT EQUI-DISTANT FROM THE NE AND NW CORNERS OF SAID SECTION. IT BEING 2780.25 DISTANT FROM EACH.
- 1892 MARCY VOL 6 PG 351 COPIED FROM DANE COUNTY SURVEYOR'S RECORDS-BK6 PG 206&207 2/17/1886. DISTANCES IN FEET. COURSES TRUE BEARINGS VAR 4-3-15 & ??-42E FROM DUE NORTH SEE FB FP1-15. STATES NOTHING ABOUT MON. 2621.5 TO SE COR SEC 32 & 2621.5 TO SW COR SEC 32. SHOWS N88-55E 5243 ALONG SOUTH SEC LINE. CALLS FOR THE S 1/4 COR SEC 32 AS EAST OF THE N 1/4 COR SEC 5. SW COR SEC 32 RUN N88-55E TO THE SE COR SEC 32 FOUND BY MEASURING 92.4 FROM THE ROCK COUNTY CORNER STONE, ACCORDING TO THE US FIELD NOTES, NO WITNESS TREES REMAINING; THENCE N2-58W 5298 TO THE NE CORNER OF SEC 32.
- 1904 KERCH VOL 3 PG 22 MON 2787.5 TO MON @ NE COR SEC 5
- 1976 BARNES VOL 5 PG 132 FD CUT LIMESTONE MARKED S 1/4 Q.' DEEP @ FENCEINT. REFERENCED SAME.
- 1978 LEE #5073 FD CUT STONE N89-16-46E 2787.27 TO CUT STONE @ NW COR SEC 4.
- 1978 LEE GSM VOL 7 PG 248 FD CONG. MON.
- 1979 WILHEALM #5074 # 40034 FD 6X6 LIMESTONE MON WEST OF DANE CO. IRON PIPE @ S 1/4 COR SEC 32 T5N R10E. S 1/4 COR SEC 32 TO SW COR SEC 32 IS S88-44-40W 2621.17 & N89-22-13E 2613.48 TO IRON PIPE @ SE COR SEC 32.
- 1986 KARNs #13305 & #13304 SEC COR. N89-28-06E 266.00 TO IP @ S 1/4 COR SEC 32, S0-53-35W 2625.74 TO 1/16TH COR. S 1/4 COR SEC 32 IS A FD PIPE.

SHEET 1 OF 3

CORNER CODE A-7

SEAL
Imboss
David
Barnes
Nov 1, 2011

UN504 N1/4CORSEC5

2011 DALSING GSM PRELIM. FD CUT STONE. N88-29-43E 265.72 TO FD 1" IRON PIPE @ S 1/4 COR SEC 32; S0-07-55E 2574.62 TO CENTER OF SEC 5; S88-27-45W 2355.38 TO FD ALUM MON @ SW COR SEC 32, T5N R10E.

FD CUT LIMESTONE SPLIT LENGTHWISE IN 3. FD REFERENCE PIPES & PIPE @ S 1/4 COR SEC 32 T5N R10E. LIMESTONE IS 0.2' BELOW GRADE.

C) Was the corner restored through acceptance of (1) an obliterated evidence location, or, (2) a found perpetuated location?

ACCEPTED FD CUT LIMESTONE. DID NOT ACCEPT NOR REJECT S 1/4 COR SEC 32.

D) Describe any material discrepancy between the location of the corner as restored or reestablished and the location of that corner as previously restored or reestablished by distance and direction. Show the discrepancy on the plan view drawing under (a), above. Show the distances between the corner as previously restored or reestablished and (1) the corner as restored or reestablished, and (2) to at least 4 of the witness monuments shown on the drawing in (a), above.

NONE

(E) Was the corner reestablished through lost corner proportionate methods? If so, show the method, including the directions and distances to other public land survey corners used as evidence or used for proportioning the corner location.

RUGER ESTABLISHED THE NORTH QUARTER CORNER OF SECTION 5 ON THE TOWN LINE AND AT A POINT EQUI-DISTANT FROM THE NE AND NW CORNERS OF SAID SECTION. IT BEING 2780.25 DISTANT FROM EACH. THE ORIGINAL GOVERNEMENT SURVEYOR DID NO ESTABLISH THE 1/4 CORNERS ON THE NORTH LINE OF T4N R10E, ONLY THE S 1/4 CORNERS ON SOUTH LINE OF T5N R10E.

I, Donald Barnes, hereby certify that the corner location as identified by the corner code index was determined by me under my direction and control and that this U.S. Public Land Survey Monument Record is correct and complete to the best of my knowledge and belief.

SEAL

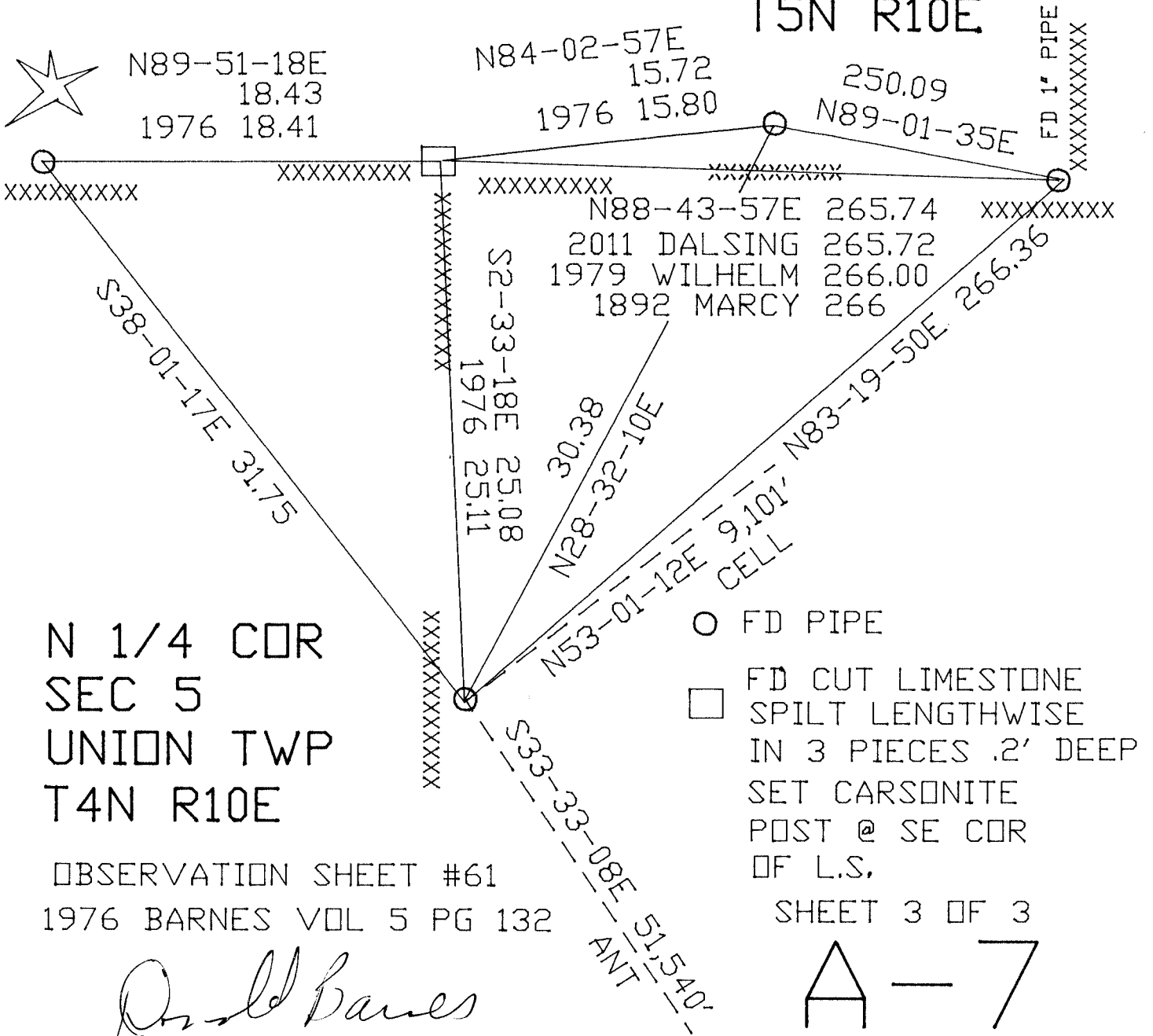
SHEET 2 OF 3

Emboss
Donald
Barnes
NOV 1, 2011

CORNER CODE A-7

A.E. 7.08 REQUIREMENT

SEC 32
T5N R10E



N 1/4 COR
SEC 5
UNION TWP
T4N R10E

OBSERVATION SHEET #61
1976 BARNES VOL 5 PG 132

SHEET 3 OF 3

Donald Barnes
Nov 9, 2011

A-7