

Paper weight-110# (minimum)

Black nonfading ink required

# U.S. PUBLIC LAND SURVEY MONUMENT RECORD

For Public Land Survey Corners In:  
T. 4 N. R. 10 E. 4th P.M.  
CORNER CODE INDEX

WI ADMINISTRATIVE CODE A-E 7.08 REQUIREMENT  
REV 10/23/2004 USMONREC.DWG

UNION TWP  
ROCK COUNTY WI

IF AVAILABLE  
ROCK COUNTY COORDINATES PREFERRED

	1	2	3	4	5	6	7	8	9	10	11	12	13	14	15	16	17	18	19	20	21	22	23	24	25
A																									
B																									
C																									
D																									
E																									
F																									
G																									
H																									
J																									
K																									
L																									
M																									
N																									
O																									
P																									
Q																									
R																									
S																									
T																									
U																									
V																									
W																									
X																									
Y																									
Z																									

North \_\_\_\_\_ Elev. \_\_\_\_\_

East \_\_\_\_\_

Hor. Datum \_\_\_\_\_ Vert. Datum \_\_\_\_\_

LATITUDE \_\_\_\_\_ ELLIPS. HT. \_\_\_\_\_

LONGITUDE \_\_\_\_\_

NAD83(91) \_\_\_\_\_ NETWORK ADJ. YR 2010

GPS (X) \_\_\_\_\_ TRAVERSE (X) X

BASED ON THE FOLLOWING CONTROL:

PLACE MONUMENT SYMBOL  AT PROPER LOCATION ON ABOVE INDEX

CORNER MONUMENT       WITNESS MONUMENT

(a) BEARINGS ARE BASED ON: ROCK COUNTY PROJECTION

FIELD BOOK \_\_\_\_\_ PAGE # \_\_\_\_\_  
OR OBSERVATION SHEET \_\_\_\_\_

SHEET 1 OF 4

SHOW A PLAN VIEW DRAWING DEPICTING THE CORNER MONUMENT AND SURROUNDING PHYSICAL FEATURES, INCLUDING THE EXCAVATION AREA AND DEPTH.

PLANNING & ZONING COMMITTEE ADOPTED THIS FORM ON 12/2/1982

CORNER CODE A-17

UN509 NECORSEC3

(B) Describe any record evidence, monument evidence, occupational evidence, testimonial evidence or any other material evidence you considered, and whether the monument was found or placed.

1833 BRINK SOUTH BOUNDARY OF T5N R10E WEST ON SOUTH  
SIDE SECTION 35

33.66 W. OAK 18  
2343.0 W. OAK 16  
2640.00 SET QUARTER SECTION POST BURR OAK 12  
N17E 35.64'; BUR OAK 14 N58W 53.46'  
3564.0 A STREAM RAPID & PURE 10.56' NE  
3781.8 BURR OAK 15  
5280.00 SET POST CORNER TO SECTIONS 34 & 35 BURR  
OAK 10 N1 1/2W 29.7'; BURR OAK 14 N73W  
52.14' LAND ROLLING GOOD SECOND RATE  
BURR & W. OAK RED ROOT ROSE WILLOW GRASS  
& C

1833 BRINK SOUTH BOUNDARY OF T5N R10E WEST ON SOUTH  
SIDE SECTION 34

2478.96 BURR OAK 12  
2640.00 SET QUARTER SECTION POST BURR OAK 10  
N33E 34.32'; BURR OAK 12 N70W 57.42'  
4967.82 BUR OAK 14  
5280.00 SET POST CORNER TO SECTIONS 33 & 34 BURR  
OAK 7 N16W 7.92'; BURR

1833 HARRISON T5N R10E NORTH BETWEEN SECS 35 & 34

1609.08 YEL. OAK 12 IN  
1989.90 Y. OAK 16 IN  
2640.00 SET 1/4 SEC POST B.B. O 12 IN N83W 31.68'; B.B.  
O 14 IN N76E 13.2'  
3972.54 B. OAK 10 IN  
5280.00 SET POST COR SECS 26,27,34,35 B.BUR OAK 20  
S12W 115.50'; B. BUR OAK 18 N23-30E 26.4'  
LAND ROLLING 2ND RATE SOIL DARK SANDY  
LOAM B. YEL. & BLK OAK UNDERBRUSH OAK  
HAZEL RED ROOT B? PRAIRIE GRASS

1833 HARRISON NORTH BETWEEN SECS 2 & 3

2123.88 ENTER MARSH  
2376 ENTER MARSH  
2640 QUARTER SEC COR. {WO 18 S24E 16.5'. NO  
OTHER NEAR WO 18 ???} MARKED  
3960 LEAVE MARSH CRR NE EXT. 2640 & 1320 S.W.  
5175.06 INT. N. BDY 16.5' E OF POST. {BURR O. S24E  
21.78', BURR O 12 S77W 15.84'

1870 RUGER AUG REMON-108 WEST ON NORTH LINE OF NE 1/4  
SEC 2 ON A VAR 7-40; INTERSECTED QUARTER  
LINE OF SECTION 35 T5 R10 8.91' SOUTH OF  
QUARTER CORNER OF SAID SECTION. COR VAR 7-  
29' CONTINUED WEST ON NORTH LINE OF NW 1/4  
SECTION 2 ON A VAR 7-20; AT

5211.36 INTERSECTED WEST BOUNDARY LINE 5.94'  
SOUTH OF CORNER COR VAR 7-12 FOUND OLD  
STAKE AT CORNER ALSO FOUND STUMP OF  
SOUTH BEARING TREE AND PUT IN NW CORNER  
OF SECTION FROM IT. ESTABLISHED NORTH  
QUARTER CORNER OF SECTION 2 IN THE TOWN  
LINE AND EQUI-DISTANT FROM THE NE AND NW  
CORNERS OF SAID SECTION. IT BEING EQUI-  
DISTANT FROM EACH 2605.68

1870 RUGER AUG REMON-114 EAST ON NORTH LINE OF  
NW 1/4 SEC 3 ON A VAR 7-25; OFFSET SOUTH  
22.11' OFFSET NORTH 15.18' INTERSECTED  
QUARTER LINE OF SECTION 34 T5 R10 2.64'  
SOUTH OF QUARTER CORNER. COR VAR 7-19  
CONTINUED EAST ON NORTH LINE OF NE 1/4 OF  
SAID SECTION ON A VARIATION OF 7-15; AT

SHEET 1 OF 4

CORNER CODE A-17

*Donald  
Barnes  
Oct 24, 2011*

UN509 NECORSEC3

- 5280.33 INTERSECTED EAST BOUNDARY LINE AT CORNER. ESTABLISHED NORTH QUARTER CORNER OF SECTION 3 ON THE TOWN LINE EQUI-DISTANT BETWEEN THE NW AND NE CORNERS OF SAID SECTION. IT BEING 2640.16 DISTANT FROM EACH AND 0.66' WEST OF THE SOUTH QUARTER CORNER OF SECTION 34 T5 R10
- 1870 RUGER AUG REMON-109 SOUTH ON WEST LINE OF NW 1/4 SEC 2 ON A VAR 7-00; OFFSET WEST 2.64' OFFSET EAST 5.94' AT
- 2566.74 INTERSECTED QUARTER LINE 7.92' WEST OF QUARTER CORNER. ESTABLISHED QUARTER CORNER FROM BEARING TREE. COR VAR 7-14' REMON-110 NORTH ON WEST LINE OF SW 1/4 SEC 2 ON A VAR 6-35; OFFSET WEST 26.40' AT
- 2642.64 INTERSECTED QUARTER LINE 13.86' WEST OF QUARTER CORNER. COR VAR 6-51
- 1871 GRAVES VOL 6 PG 353 COMMENCE AT THE CENTER OF SECTION {35} (CORNER PREVIOUSLY SET) RUN SOUTH TO S 1/4 COR; COULD NOT BE FOUND TREES & STUMPS ALL GONE. WEST TO SE CORNER & RUN SHORT LINE TO S 1/4 CORNER SHORT 13.20' DIVIDED EQUAL IN THE CENTER & SET A STAKE 0.99' WEST OF 1/4 COR IN ROCK COUNTY ON SECTION TWO, EQUAL DIVIDED THE SW 1/4 OF SE 1/4 ??? JOHN D SPEAR & MRS CLERK BY SETTING CORENRS AT 1,2,3, & 4. S.W. GRAVES COUNTY SURVEYOR
- 1884 RUGER VOL 2 PG 387 STONE MON. 2566.74 TO STONE MON @ W 1/4 COR SEC 2 & 2612.15 TO STONE MON @ N 1/4 COR SEC 2.
- 1895 MARCY VOL 6 PG 353 RUN N & S CENTER OF SEC 35. RESTORE THE N 1/4 COR, BUT IT WAS NOT VERY RELIABLE. NW COR [SEC 35] FD BY ROOTS OF "U.S. BTS". AT ONE [1 & 2] TWO FD STONES SET BY GRAVES WHICH WERE ADOPTED FOR THE CENTRE OF THE HIGHWAY - SEE DISTANCES IN RED & FIELD BOOK #2 PG 77 [COPIED FROM THE DANE COUNTY SURVEYOR'S RECORDS VOL 5 PG 214
- 1920 ELY VOL 3 PG 119 COPIED FROM VOL 3 PG 120 BELOIT RECORDS. 2613.66 TO STONE @ N 1/4 COR SEC 2. EVIDENCE OF FENCE & STATEMENT OF OLD PROPERTY OWNERS AT NW COR SEC 2.
- 1984 KARNS #14071 USED BUT STATES NOTHING ABOUT MON. SET PK 524.00 EAST OF CORNER.
- 1973 TREFZ CSM VOL 3 PG 228 FD REF NAILS.
- 1973 LEE VOL 4 PG 524 REF SAME.
- 1973 LEE VOL 4 PG 525 DUG & FD NOTHING. NOTE: DUG & FD CUT STONE REF 3-19-73
- 1975 WILHELM VOL 5 PG 161 & #7017FD PK SET 5/8 REBAR & REF. SAME. COR IS 3' NORTH OF PVMT CENTER.
- 1975 WILHELM VOL 5 PG 162 REBAR N89-48-25W 2647.18 TO IP @ N 1/4 COR SEC 3 & S0-08-06E 2677.92 TO IP @ E 1/4 COR SEC 3
- 1975 WILHELM #7007 REBAR S89-49-3E 2613.95 TO REBAR @ N 1/4 COR SEC 2; S0-08-06E 2677.92 TO REBAR @ W 1/4 COR SEC 2. FD PK SET 5/8 REBAR. 3' NORTH OF PVMT CENTER. E TIE. ON LINE N/S FENCE TO SOUTH.
- 1976 WEIR #5058 TIES. 3/4 REBAR. @ SW COR SEC 35 SET PK14.52 EAST OF REBAR. I SET THE PK BY USE OF OLD RESURVEY NOTES.
- 1984 KARNS #14071 STATES NOTHING ABOUT MON. EAST 524.0 (CALL 525.4)
- 1998 KARNS CSM VOL 21 PG 203 SEC COR FD. WEST 303.94 TO NE COR OF LOT 70.00 WIDE. 2646.38 TO FD SEC COR @ S 1/4 COR SEC 34

SEAL  
Dennis Barnes  
OCT 24, 2011

UN509NECORSEC3

2001 BIRRENKOTT #14169 FD 5/8 REBAR N89-48-27W 2647.09  
TO FD 3/4 IP @ N 1/4 COR SEC 3

2001 KARNS CSM VOL 25 PG 376 SEC COR FD. WEST 303.94 TO  
LOT COR

FD 3/4 PIN & NW & NE REFERENCE PIPES. PIN IS IN HARMONY WITH  
RECORD. FD PK @ SW COR SEC 35 T5N R10E.

*C) Was the corner restored through acceptance of (1) an obliterated evidence location, or, (2) a found perpetuated location?*

ACCEPTED FD PIN FOR PERPETUATING CUT LIMESTONE. DID NOT  
ACCEPT NOR REJECT THE PK @ THE SW COR SEC 35


*D) Describe any material discrepancy between the location of the corner as restored or reestablished and the location of that corner as previously restored or reestablished by distance and direction. Show the discrepancy on the plan view drawing under (a), above. Show the distances between the corner as previously restored or reestablished and (1) the corner as restored or reestablished, and (2) to at least 4 of the witness monuments shown on the drawing in (a), above.*

THE ONLY DISCREPANCY IS WITH THE SW COR OF SEC 35 T5N R10E.  
HARRISON & RUGER CALL FOR A JOG OF 16.50. GRAVES AND WEIR  
CALL FOR A JOG OF 14.52. THIS IS A DIFFERENCE OF 1.98. IT  
APPEARS WEIR USED GRAVES RECORD DISTANCE TO ESTABLISH THE  
SW COR SEC 35. THE FD PK IS 0.02' OFF A LINE BETWEEN THE NE &  
NW CORNERS OF SEC 3.

*(E) Was the corner reestablished through lost corner proportionate methods? If so, show the method, including the directions and distances to other public land survey corners used as evidence or used for proportioning the corner location.*

NO

I, **Donald Barnes**, hereby certify that the corner location as identified by the corner code index was determined by me under my direction and control and that this U.S. Public Land Survey Monument Record is correct and complete to the best of my knowledge and belief.

  
SEAL  
HINTON  
OCT 24, 2011

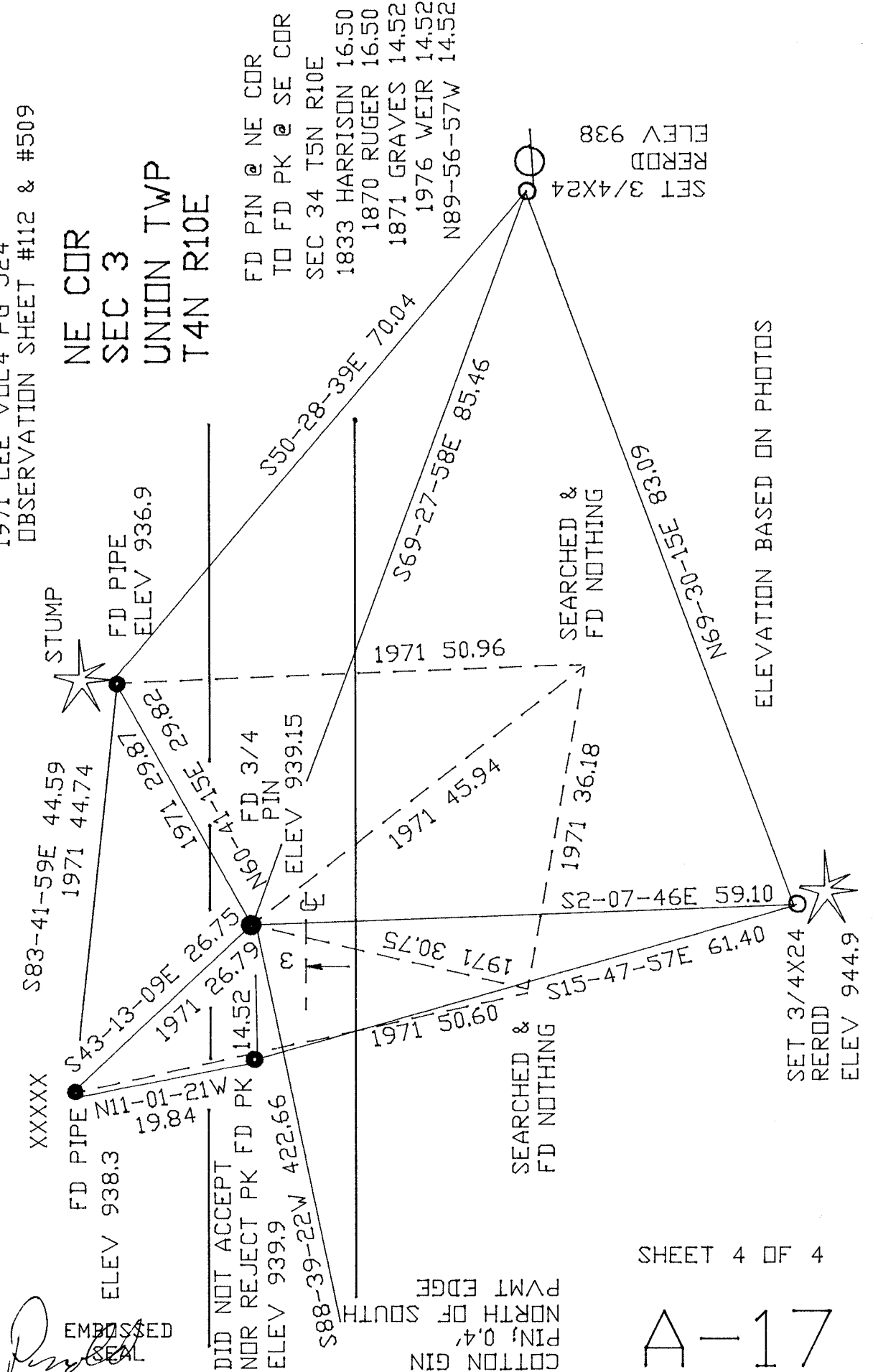
SHEET 3 OF 4

CORNER CODE A-17

A.E. 7.08 REQUIREMENT

1971 LEE VOL4 PG 524  
OBSERVATION SHEET #112 & #509

NE COR  
SEC 3  
UNION TWP  
T4N R10E



FD PIN @ NE COR  
TO FD PK @ SE COR  
SEC 34 T5N R10E  
1833 HARRISON 16.50  
1870 RUGER 16.50  
1871 GRAVES 14.52  
1976 WEIR 14.52  
N89-56-57W 14.52

SET 3/4X24  
REROD  
ELEV 938

ELEVATION BASED ON PHOTOS

SET 3/4X24  
REROD  
ELEV 944.9

*Barner*  
EMBOSSED SEAL  
OCT 24, 2011

COTTON GIN  
PIN, 0.4  
NORTH OF SOUTH  
PMT EDGE

SHEET 4 OF 4

A-17