

# U.S. PUBLIC LAND SURVEY MONUMENT RECORD

For Public Land Survey Corners In:

WI ADMINISTRATIVE CODE A-E 7.08 REQUIREMENT

T. 4 N. R. 10 E. 4th P.M.

REV 10/23/2004

USMONREC.DWG

### CORNER CODE INDEX

1	2	3	4	5	6	7	8	9	10	11	12	13	14	15	16	17	18	19	20	21	22	23	24	25	
A																									A
B																									B
C	6																								C
D																									D
E																									E
F																									F
G	7																								G
H																									H
J																									J
K																									K
L	18																								L
M																									M
N																									N
O																									O
P	19																								P
Q																									Q
R																									R
S																									S
T																									T
U	30																								U
V																									V
W																									W
X																									X
Y																									Y
Z																									Z
1	2	3	4	5	6	7	8	9	10	11	12	13	14	15	16	17	18	19	20	21	22	23	24	25	

UNION TWP

ROCK COUNTY WI

IF AVAILABLE  
ROCK COUNTY COORDINATES PREFERRED

North \_\_\_\_\_ Elev. \_\_\_\_\_

East \_\_\_\_\_

Hor. Datum \_\_\_\_\_ Vert. Datum \_\_\_\_\_

LATITUDE \_\_\_\_\_ ELLIPS. HT. \_\_\_\_\_

LONGITUDE \_\_\_\_\_

NAD83(91) \_\_\_\_\_ NETWORK ADJ. YR 2010

GPS (X) \_\_\_\_\_ TRAVERSE (X) X

BASED ON THE FOLLOWING CONTROL:

PLACE MONUMENT SYMBOL  AT PROPER LOCATION ON ABOVE INDEX

CORNER MONUMENT       WITNESS MONUMENT

BEARINGS ARE BASED ON: \_\_\_\_\_ ROCK COUNTY PROJECTION

EYA 36  
TAN R9E  
BROOKLYN TWP

FIELD BOOK \_\_\_\_\_ PAGE # \_\_\_\_\_

OR OBSERVATION SHEET \_\_\_\_\_

SHEET 1 OF 2

SHOW A PLAN VIEW DRAWING DEPICTING THE CORNER MONUMENT AND SURROUNDING PHYSICAL FEATURES, INCLUDING THE EXCAVATION AREA AND DEPTH.

PLANNING & ZONING COMMITTEE ADOPTED THIS FORM ON 12/2/1982

CORNER CODE 70-1

UN 6620 E 1/4 COR SEC 36 T4N R9E

(B) Describe any record evidence, monument evidence, occupational evidence, testimonial evidence or any other material evidence you considered, and whether the monument was found or placed.

VAR 8-10E

1833 MULLETT VAR 8-10E NORTH ON EAST SIDE OF SEC 36  
2640 SET 1/4 SEC POST IN PRAIRIE MADE MOUND  
OF EARTH & ??  
5280 SET POST FOR CORNER TO SECTIONS 25 & 36 IN  
PRAIRIE. MADE A MOUND.

LAND ROLLING DRY PRAIRIE SECOND RATE  
COVERED WITH A SHORT GRASS

1851 MAGNOLIA TOWN RD RECORDS RD BK 1 PG 12 ALBON  
SOUGHTON AND OTHERS OF THE TOWN OF ALBANY TO DO  
SURVEY AND REROUTE THE ROUTE FOR A HIGHWAY ON THE  
TOWN LINE BETWEEN THE TOWNS OF MAGNOLIA AND ALBANY  
IT WAS ORDERED THAT THE FOLLOWING SURVEY CONSTITUTE  
SAID HIGHWAY TO WIT; COMMENCING AT THE SOUTH EAST  
CORNER OF THE TOWN OF ALBANY AND RUNNING THENCE  
NORTH ON THE TOWN LINE TO THE 1/4 STAKE ON THE EAST  
SIDE OF SECTION 36 THENCE NORTH 60 1/2W 299.64';  
THENCE N47W 231.0' THENCE N11W 259.71 TO A RED OAK  
TREE THENCE N42 1/2E 698.28 TO THE SAID TOWN LINE  
THENCE NORTH ON THE TOWN LINE BETWEEN THE TWO  
TOWNS TO THE CORNER OF THE TOWN OF MAGNOLIA. THE  
SAID COURSE AND DISTANCE TO BE FOUR RODS WIDE. THE  
VARIATION OF THE MAGNETIC NEEDLE IS 7- 25 MINUTES

1976 TALARCZYK #6988 SET CAST ALUMINUM MON. CORNER SET  
BY PROPORTIONATE MEASUREMENT & EXISTING PHYSICAL  
EVIDENCE.

FD ALUM 0.5' DEEP @ CENTER OF PVMT, WESTERN REF PIN, & NE  
REF PIN. MON IS 0.09' WEST OF A LINE BETWEEN THE SW & W 1/4  
COR SEC 30.

C) Was the corner restored through acceptance of (1) an obliterated evidence location, or, (2) a found  
perpetuated location?

DID NOT ACCEPT NOR REJECT THE FD ALUM. ALUM IS IN HARMONY  
WITH TALARCZYK'S REFERENCE PINS. NO-07-04E 2640.36 TO NE  
COR SEC 36 & SO-05-30E 2640.22 TO SE COR SEC 36.

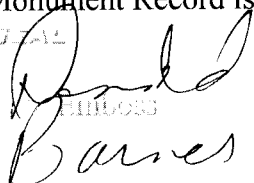
D) Describe any material discrepancy between the location of the corner as restored or reestablished  
and the location of that corner as previously restored or reestablished by distance and direction. Show  
the discrepancy on the plan view drawing under (a), above. Show the distances between the corner as  
previously restored or reestablished and (1) the corner as restored or reestablished, and (2) to at least 4  
of the witness monuments shown on the drawing in (a), above.

(E) Was the corner reestablished through lost corner proportionate methods? If so, show the method,  
including the directions and distances to other public land survey corners used as evidence or used for  
proportioning the corner location.

IN 1976 TALARCZYK (#6988) SET A CAST ALUMINUM MON. AND HE  
STATES " CORNER SET BY PROPORTIONATE MEASUREMENT &  
EXISTING PHYSICAL EVIDENCE." HIS RECORD DOES NOT STATE HIS  
MEASUREMENTS & THE PHYSICAL EVIDENCE THAT HE FOUND OR  
USED.

I, **Donald Barnes**, hereby certify that the corner location as identified by the corner code index  
was determined by me under my direction and control and that this U.S. Public Land Survey  
Monument Record is correct and complete to the best of my knowledge and belief.

SEAL

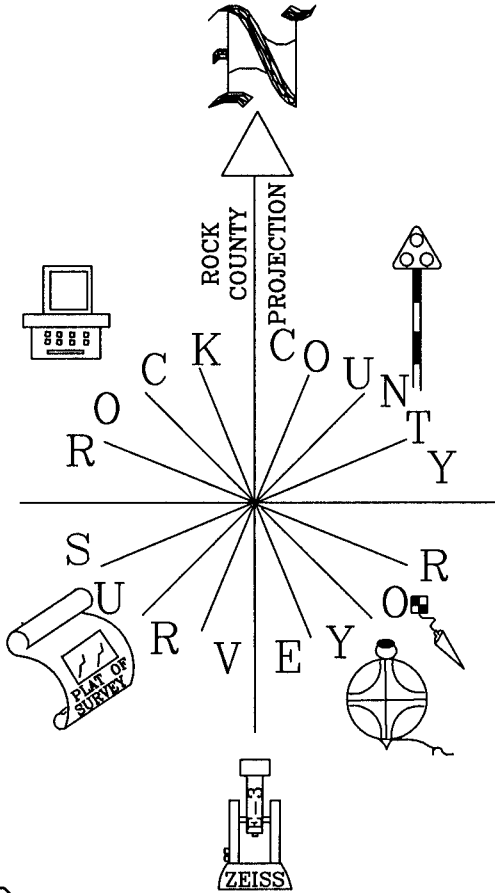
  
Barnes

4/09/2012

SHEET 1 OF 2

CORNER CODE T/V-1

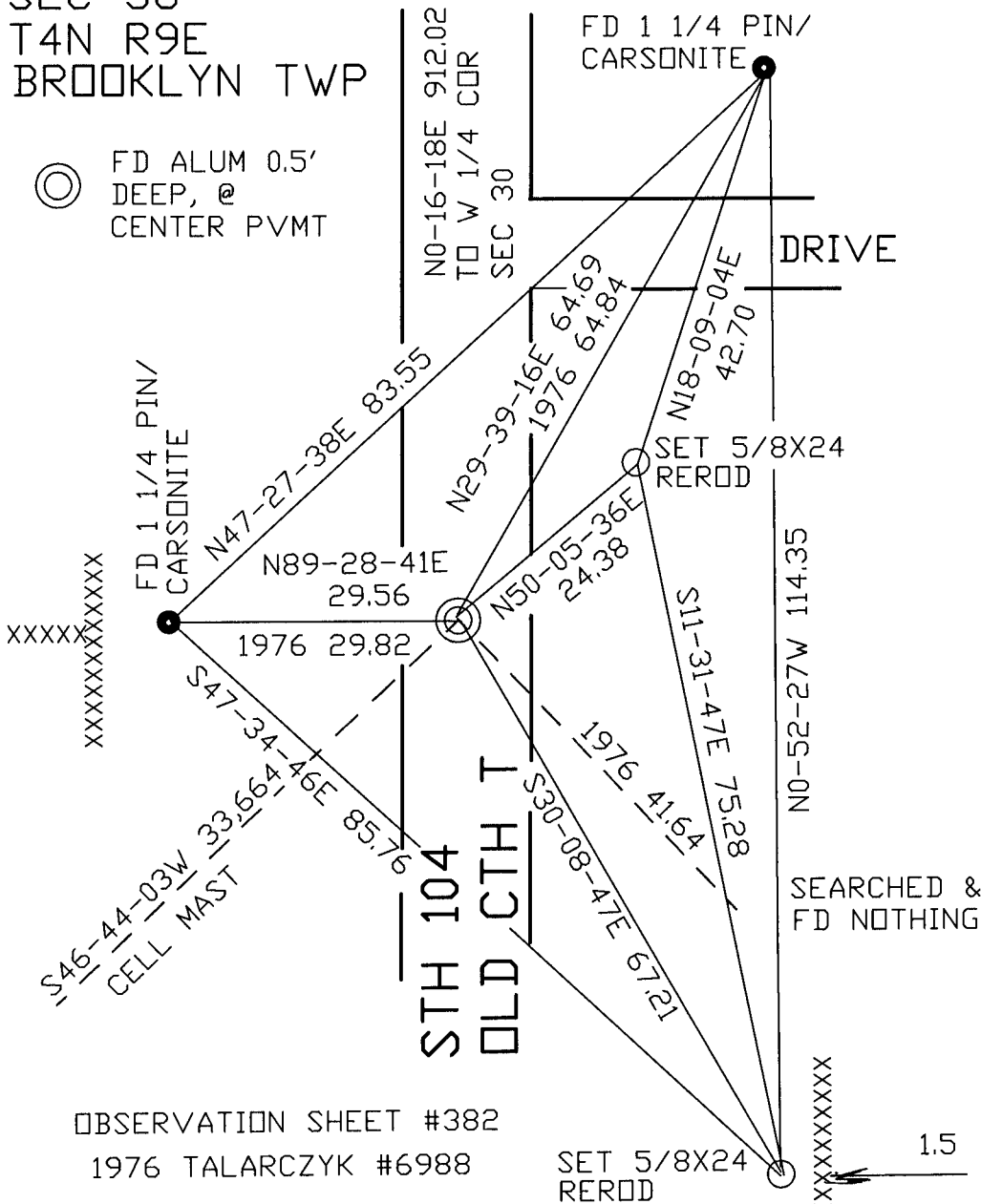
A.E. 7.08 REQUIREMENT



NOT TO SCALE

E 1/4 COR  
 SEC 36  
 T4N R9E  
 BROOKLYN TWP

⊙ FD ALUM 0.5'  
 DEEP, @  
 CENTER PVMT



OBSERVATION SHEET #382  
 1976 TALARCZYK #6988

T/V-1

Sheet 2 of 2  
 Dennis Barnes

4-09-12