

# U.S. PUBLIC LAND SURVEY MONUMENT RECORD

For Public Land Survey Corners in the

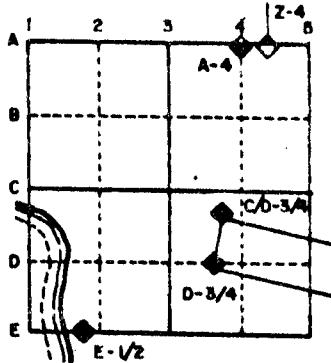
T. 4 N., R. 10 E.

## CORNER CODE INDEX

	1	2	3	4	5	6	7	8	9	10	11	12	13	14	15	16	17	18	19	20	21	22	23	24	25
A																									
B																									
C																									
D																									
E																									
F																									
G																									
H																									
I																									
J																									
K																									
L																									
M																									
N																									
O																									
P																									
Q																									
R																									
S																									
T																									
U																									
V																									
W																									
X																									
Y																									
Z																									

PLACE MONUMENT SYMBOL (◆) AT PROPER LOCATION ON ABOVE INDEX

### EXAMPLE



UNION TWP  
ROCK COUNTY WI

IF AVAILABLE  
STATE PLANE COORDINATES

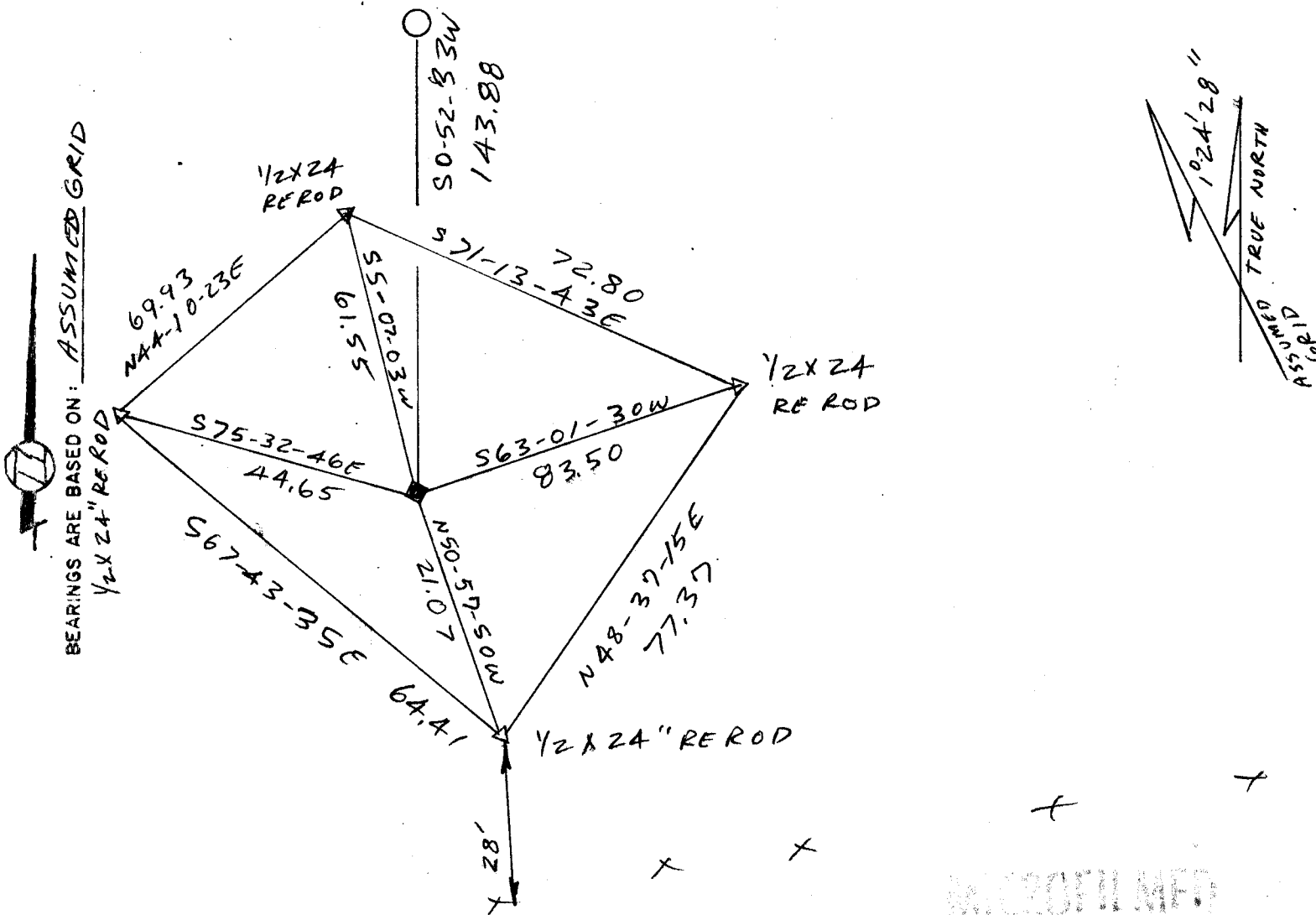
North (Y) \_\_\_\_\_ Eleve. (Z) \_\_\_\_\_  
 East (X) \_\_\_\_\_ Zone \_\_\_\_\_  
 Hor. Datum \_\_\_\_\_ Vert. Datum \_\_\_\_\_

a.)

◆ CORNER MONUMENT

○ WITNESS MONUMENT

SW COR SEC 6 PORTER TWP



PORTER BK # 3 PG 4

SHEET 2 OF 74

PORTER TWP

CORNER CODE: E 25

(b) Describe any record evidence., monument evidence, occupational evidence, testimonial evidence or any other material evidence you considered, and whether the monument was found or placed.

1870 RUGER REMONUMENTATION. ESTABLISHED IT FROM QUARTER CORNERS NEXT ADJACENT NORTH AND SOUTH. LINES SHOWS THAT THE CORNER IS MID WAY BETWEEN THE EAST QUARTER CORNERS OF SECTION 1 AND SECTION 12. THE VARIANCE SHOW THAT IT IS NOT ON LINE BETWEEN THOSE CORNERS.

1893 BLEEDORN VOL 2 PG 473 FOUND MONUMENT AND FOUND SW CORNER OF SECTION 6 PORTER TOWNSHIP.

1933 SUNNY VOL 3 PG 237 FOUND 6" X 6" CUT STONE. SHOWS THAT THE SW CORNER OF SECTION 6 PORTER TOWNSHIP IS NORTH 143.88 OF THE CUT STONE.

FOUND TOP 8 INCHES OF CUT LIMESTONE WITH SCRIBED NUMBERS. IN EXCAVATION HOLE I FOUND PIECES OF CUT LIMESTONE. THIS IS IN THE GENERAL AREA THAT THE CORNER IS KNOWN POSITIONED.

(c) Was the corner restored through acceptance of (1) an obliterated evidence location, or, (2) a found perpetuated location?

THE CORNER WAS RESTORED THROUGH ACCEPTANCE OF (1) OBLITERATED EVIDENCE LOCATION. I PLACED THE CORNER MID WAY BETWEEN THE E 1/4 CORNER OF SECTION 1 AND THE E 1/4 CORNER OF SECTION 12 AS RUGER INTENDED. I PROPORTIONATED RUGER'S DISTANCE FROM THE S 1/4 CORNER OF SECTION 1 TO THE SE CORNER OF SECTION 1 WITH HIS RECORD DISTANCES AND MY MEASURED DISTANCES FROM THE SW CORNER OF SECTION 1 TO THE S 1/4 CORNER OF SECTION 1 AND FROM THE E 1/4 CORNER OF SECTION 1 TO THE E 1/4 CORNER OF SECTION 12.

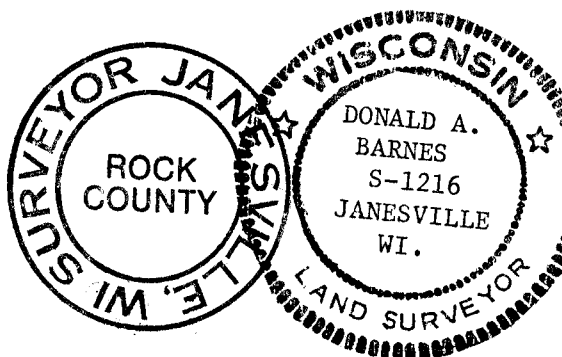
	RUGER MEASUREMENT	FIELD MEASURED
SW 1 TO SE 1	2618.88	2624.55
E 1/4 1 TO		
E 1/4 12	5314.32	5311.36
TOTAL	7933.2	7935.91

(d) Describe any material discrepancy between the location of the corner as restored or reestablished and the location of that corner as previously restored or reestablished by distance and direction. Show the discrepancy on the plan view drawing under (a).

NONE

(e) Was the corner reestablished through lost corner proportionate methods?

NO



*Donald Barnes*  
July 25 1988