

**PUBLIC LAND SURVEY MONUMENT RECORD**

For Public Land Survey Corners in the

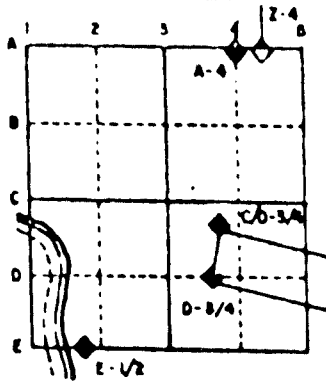
T. 4 N., R. 10 E.

**CORNER CODE INDEX**

	1	2	3	4	5	6	7	8	9	10	11	12	13	14	15	16	17	18	19	20	21	22	23	24	25
A																									
B																									
C	6																								
D					5																				
E																									
F																									
G																									
H																									
I																									
J																									
K																									
L																									
M																									
N																									
O	7																								
P																									
Q																									
R																									
S																									
T																									
U																									
V																									
W																									
X																									
Y																									
Z																									

PLACE MONUMENT SYMBOL (◆) AT PROPER LOCATION ON ABOVE INDEX

**EXAMPLE**



UNION TWP  
ROCK COUNTY WI

IF AVAILABLE  
STATE PLANE COORDINATES

North (Y) \_\_\_\_\_ Eleve. (Z) \_\_\_\_\_  
 East (X) \_\_\_\_\_ Zone \_\_\_\_\_  
 Hor. Datum \_\_\_\_\_ Vert. Datum \_\_\_\_\_

◆ CORNER MONUMENT

○ WITNESS MONUMENT

BEARINGS ARE BASED ON:

(B) Describe any record evidence, monument evidence, occupational evidence, testimonial evidence or any other material evidence you considered, and whether the monument was found or placed.

- 1833 SEP 11th ORIGINAL SURVEYOR NORTH ON EAST SIDE SECTION 1 MAGNOLIA TWP. 5280 INTERSECTED SOUTH BOUNDARY OF T4 AS RUN OUT FROM SUGAR CREEK SET POST FOR CORNER TO TOWNSHIPS 3 & 4 NORTH, RAND 9 EAST IN PRAIRIE AND MADE A MOUND .
- 1833 SEP 15th ORIGINAL SURVEYOR WEST ON SOUTH LINE SECTION 31 PORTER TWP. 7756.32' INTERSECTED RANGE LINE 118.8' SOUTH OF TEMPORARY POST. SET POST AT INTERSECTION CORNERS TOWNSHIPS 3 & 4 N RANGES 10 & 11 E AND MADE A MOUND 4 FEET SQUARE AT BASE AND 4 FEET HIGH.
- 1835 US PLAT MAP SHOWS A COMMON CORNER AND A DISTANCE OF 2560.8' TO THE E 1/4 CORNER OF SECTION 1 MAGNOLIA TWP AND 2338.38 TO COMPUTED POSITION OF THE W 1/4 CORNER OF SECTION 6 CENTER TWP.
- 1855 CHURCH VOL 1 PG 47 DID NOT STATE WHAT HE FOUND. CALLS FOR (18.87 1/5 + 19.87 1/2 CH) 2557.5' BUT SHOULD PROBABLY BE 2623.5 TO S 1/4 CORNER OF SEC 36 UNION TWP & 2529.12 TO E 1/4 CORNER OF SECTION 1 MAGNOLIA TWP.
- 1870 RUGER REMONUMENTATION NOTES EAST ON SOUTH LINE OF SE 1/4 SEC 36 ON A VAR 6-10 OFFSET SOUTH 3 LKS (1.98') AT 39.775 CHS (2625.15') INTERSECTED EAST BOUNDARY LINE 10 LKS (6.6') SOUTH OF CORNER FOUND STAKE SET BY LOCKE AT CORNER. COR VAR 6-16. NORTH ON EAST LINE OF SE 1/4 SEC 36 ON A VAR 7-21 OFFSET WEST 8 LKS (5.28') AT 40.19 CHS (2652.54') INTERSECTED QUARTER LINE 1 LK (.66') WEST OF QUARTER CORNER. FOUND STAKE SURROUNDED BY HARD HEAD STONES SET BY LOCKE AT CORNER, . ALSO FOUND REMAINS OF STUMPS OF BEARING TREES. COR VAR 7-28. PLACED CUT LIMESTONE AT CORNER.
- 1874 RUGER VOL 2 PG 165 FOUND STONE MONUMENT. 2602.16' TO S 1/4 CORNER OF SECTION 31 PORTER TWP, 2660.79' TO W 1/4 CORNER OF SECTION 31 PORTER TWP. CALLS FOR THE W 1/4 CORNER TO BE 11.22' NORTH OF THE E 1/4 CORNER OF SECTION 36 UNION TWP. W 1/4 CORNER OF SECTION 31 IS MIDWAY BETWEEN THE NW & SW CORNERS OF SECTION 31.
- 1876 RUGER VOL 2 PG 219 FOUND STONE MONUMENT CALLS FOR 2333.43' TO THE W 1/4 CORNER OF SECTION 6 CENTER TWP.
- 1900 BROWN VOL 2 PG 520 FOUND MONUMENT. 2614.92' TO N 1/4 CORNER OF SECTION 6 CENTER TWP. 2337.72' TO W 1/4 CORNER OF SECTION 6.
- 191? KERCH VOL 3 PG 15 FOUND MONUMENT BROKEN DROVE 1/2" RAKE TOOTH UNDER BASE & RESET PORTION OF MONUMENT IN ORIGINAL PLACE. 2596.1 TO N 1/4 CORNER (GAS PIPE) OF SECTION 6 CENTER TWP.
- 1911 TOWN ROAD RECORD FOR WEARY ROAD. COMMENCING AT THE FOUR CORNERS OF THE TOWNS OF UNION, MAGNOLIA, PORTER, AND CENTER; THENCE RUNNING EST ALONG THE SOUTH SIDE OF THE DRAINAGE DITCH BETWEEN THE TOWNS OF PORTER AND CENTER, UNTIL IT INTERSECTS A HIGHWAY RUNNING NORTH AND SOUTH ON THE HALF SECTION LINE OF SECTION SIX OF THE TOWN OF CENTER,

CORNER IS IN DEEP & WIDE IRRIGATION DITCH. MONUMENT WAS DESTROYED. DID NOT REPLACE MONUMENT.

C) Was the corner restored through acceptance of (1) an obliterated evidence location, or, (2) a found perpetuated location?

RESTORED CORNER THROUGH ACCEPTANCE OF OBLITERATED EVIDENCE LOCATION. USED LOCKE'S 1867 DISTANCES AROUND SECTION 36. THIS IS IN HARMONY WITH THE N/S FENCE AT THE SE CORNER OF SECTION 36. THIS IS ALSO IN HARMONY WITH THE RECORD DISTANCES TO THE W 1/4 CORNER OF SECTION 6 CENTER TWP AND THE FENCE INTERSECTION THERE. LOCKE (1867) CALLS FOR THE S 1/4 CORNER OF SECTION 36 TO BE ON LINE WITH THE SW AND SE CORNERS. RUGERS 1870 REMONUMENTATION NOTES CALL FOR THE CORNER TO BE OFF LINE. THE ESTABLISHED S 1/4 CORNER OF SECTION 36 IS 4.8' OFF LINE. THE FOLLOWING ARE THE DIFFERENCES IN VARANCE IN BEARINGS BETWEEN THE SW TO THE S1/4 CORNER AND THE S 1/4 CORNER TO THE SE CORNERS OF SECTION 36:

LOCKE 0-0  
RUGER 0-23'  
NEW BEARINGS 0-15'

*Donald Barnes*  
*Sep 12, 1994*

10F 3

D) Describe any material discrepancy between the location of the corner as restored or reestablished and the location of that corner as previously restored or reestablished by distance and direction. Show the discrepancy on the plan view drawing under (a), above. Show the distances between the corner as previously restored or reestablished and (1) the corner as restored or reestablished, and (2) to at least 4 of the witness monuments shown on the drawing in (a), above.

(E) Was the corner reestablished through lost corner proportionate methods? If so, show the method, including the directions and distances to other public land survey corners used as evidence or used for proportioning the corner location.

NO

I, Donald Barnes, hereby certify that the corner points as identified by the corner code index were, in a field survey on, SEP 9, 1994, established, re-established, monumented, re-monumented, recovered or restored as expressed below and in conformance with the regulations and rules as required in the current manual of survey instructions of the United States Department of Interior, Bureau of Land Management.

*Donald Barnes*  
seal

*Sep 12, 1994*

COUNTY SURVEYOR FILING DATA

Date of computer entry \_\_\_\_\_

Date microfilmed \_\_\_\_\_

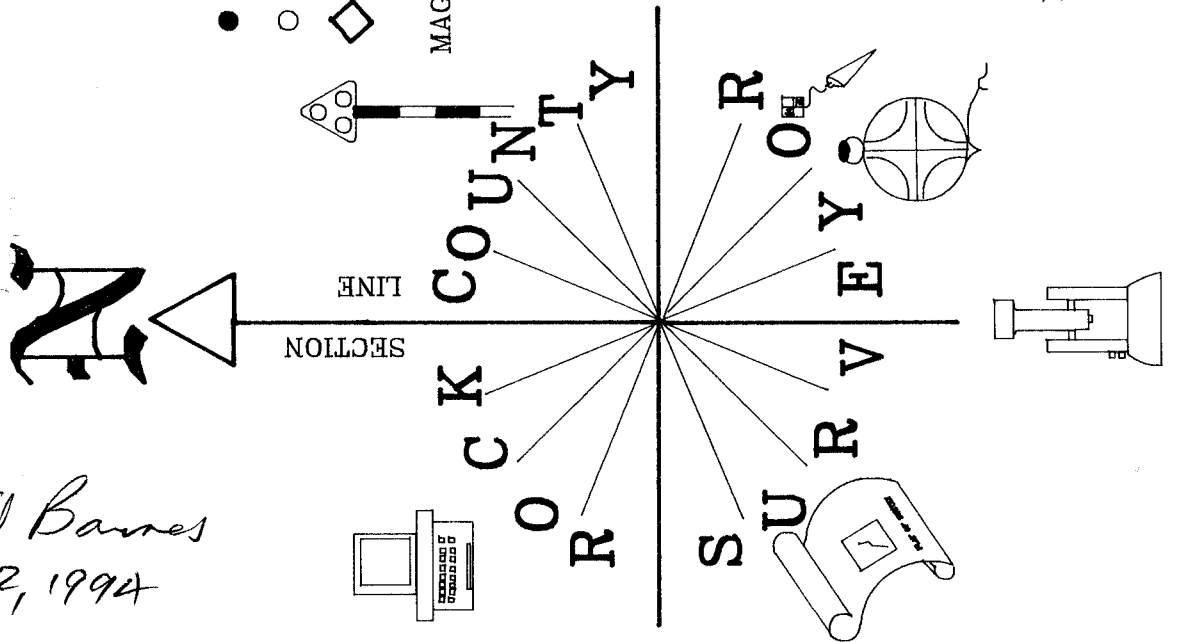
Number of included sheets \_\_\_\_\_  
CORNER CODE

AFFIX YOUR LAND SURVEYOR SEAL

2 OF 3

225

Donald Barnes  
Sep 12, 1994



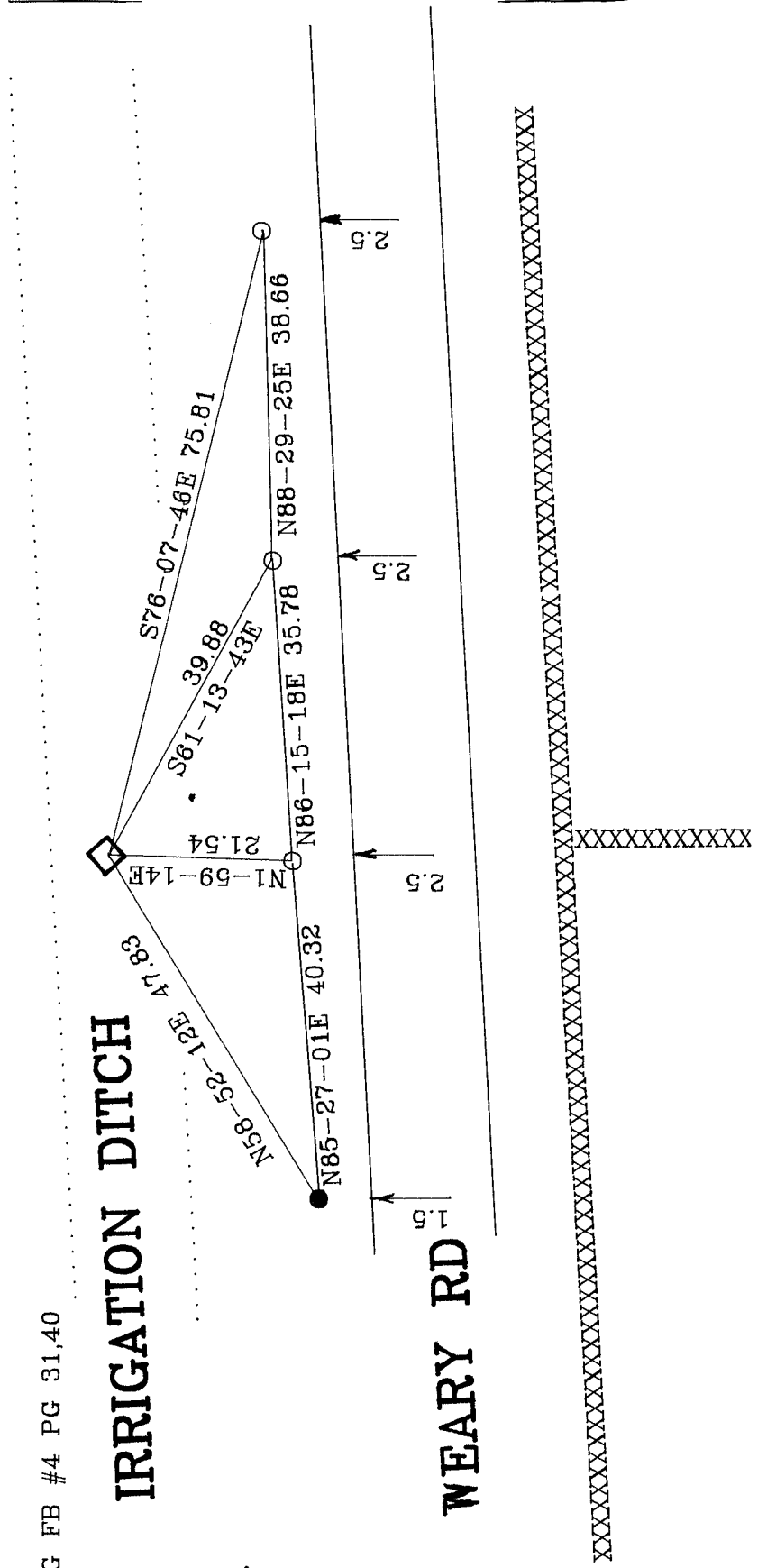
- 3/4X24 REROD WITH PLASTIC CAP
- 3/4X24 REROD
- ◇ DID NOT INSTALL MONUMENT

MAG FB #4 PG 31,40

**SE COR SEC 36  
UNION TWP**

**IRRIGATION DITCH**

**WEARY RD**



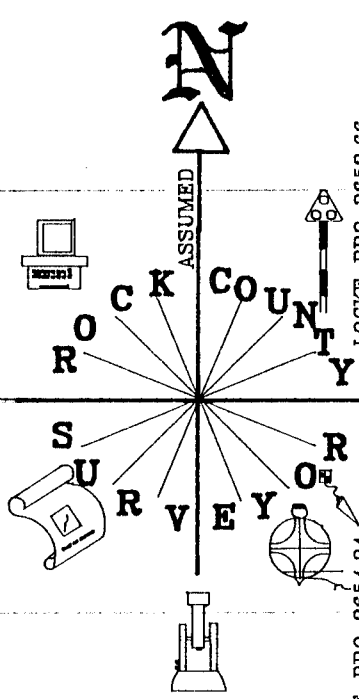
# PLAT AND RECORD

Survey on Section 1 T 3 N. R. 10 E. of the 4 P. M. in CENTER UNION MAGNOLIA Township  
 County, Wisconsin, made SEPTEMBER the 19 th 19 94

I hereby certify that the following is a correct record of said survey as made by me.

County Surveyor.

LOCKE PRO 2618.27 S89-47-28E 2619.51 LOCKE 1867 2612.29 VAR 7-00 RUGER 1870 2619.54 VAR 6-39 BARNES 1980 2619.50 ORIG 2602.05	LOCKE PRO 2618.27 S89-46-10E 2618.53 LOCKE 1867 2612.29 VAR 7-00 RUGER 1870 2619.54 VAR 6-39 BARNES 1980 2618.53 ORIG 2602.05	RUGER 1874 16.5 LOCKE 1867 16.5
NO-0456W 2650.48 RUGER 1870 2652.54 VAR 6-58 BARNES 1980 2650.47 ORIG 2640	LOCKE PRO 2652.66 NO-12-30W 2652.27 LOCKE 1867 2648.50 VAR 7-35	LOCKE PRO 2653.98 SO-09-48E 2653.02 LOCKE 1867 2647.92 VAR 7-40 RUGER 1870 2651.88 VAR 7-11 RUGER 1874 2660.79 (W 1/4 - NW SEC 31) SO-10W 2656.33 FD POST SO-29-09W 11.22 RUGER 1874 11.22
SO-11-04E 2655.13 RUGER 1870 2653.2 VAR 6-45 BARNES 1980 2654.94 ORIG 2640	LOCKE PRO 2611.32 S89-45-10E 2616.46 LOCKE 1867 2605.35 VAR 7-00	LOCKE PRO 2656.83 SO-28-25E 2656.84 LOCKE 1867 2650.56 VAR 7-55 RUGER 1870 2652.54 VAR 7-28 RUGER 1874 2660.79 (SW - W 1/4 SEC 31) SO-28-25W 2667.85 NO-N89-11-07E 2604.99 NRUGER 1874 2548.92 VAR 7-25
LOCKE PRO 2626.99 S89-36-51E 2626.51 BARNES 1980 2626.51 RUGER 1870 2626.8 VAR 6-39 LOCKE 1867 2620.99 VAR 6-55	LOCKE PRO 2627.19 RUGER 1870 2625.15 VAR 6-16 LOCKE 1867 2621.19 VAR 6-55 S89-51-41E 2627.19	KERCH 2596.1 BROWN 1900 2614.92 ORIG 2587.20
NO-35-09E 2276.66 BARNES 1980 2276.65 ORIG 2254.56	CHURCH 1855 2491.50 ORIG PLAT 0' ORIG FIELD NOTES 0' NO-01-38E 2413.68 CHURCH 1855 2409.0 VAR 7-45' 1320 CHURCH 1855 1089.0	NO-27-12W 2562.24 ORIG FIELD NOTES 2640 TO TEMP. POST CHURCH 1855 2529.12 ORIG PLAT 2560.8 1320 ORIG PLAT 1240.8 ORIGINAL SHOULD BE 2521.2 (2640-118.8) 1320 ORIG PLAT 1018.38 BROWN 1900 2337.72 RUGER 1876 2333.43 ORIG PLAT 2338.38 NO-27-22W 2339.62
INT 1/4 LINES 2661.19 S86-39-16E 2653.11 CHURCH 1855 2647.92 VAR 4 1323.96 CHURCH 1855 1323.96	CHURCH 1855 2647.92 VAR 4 S86-39-16E 2653.11 INSTALLED POLY INT 1/4 LINES 2645.02	FD DRAG TOOTH & BRICKS NO-25-23W 222.42 ORIG PLAT 2560.8 ORIG PLAT 2338.36 222.42 NO-25-22W 2639.17 BROWN 1900 2640 RUGER 1876 2635.05 ORIG PLAT 2640 RUGER 1878 2578.29 ORIG 2565.42 BROWN 1900 2586.54 KERCH 2585.5
SO-14-48E 2658.85 BARNES 1980 2658.51 1325 BARNES 1979 1330	CHURCH 1855 2651.88 INT 1/4 LINES 2648.43 NO-20-20W 2648.94 BARNES 1980 180-00-00 180-0-0	NO-25-53W 2639.03 ORIG PLAT 2640 CHURCH 1855 2626.80 1313.4 CHURCH 1855 1313.4 FD STAKE & BRICKS NO-31-38W 222.27 ORIG PLAT 222.42' KERCH 222.42 ORIG FIELD NOTES 222.42'



SEC 36

SEC 31

SEC 1

SEC 6

COMPUTED PER WI LAWS  
 ON LINE WITH 1/4 CORNERS  
 & AT EQUAL DISTANCE

NO-27-12W 2562.24  
 ORIG FIELD NOTES 2640 TO TEMP. POST  
 CHURCH 1855 2529.12  
 ORIG PLAT 2560.8  
 1320 ORIG PLAT 1240.8  
 ORIGINAL SHOULD BE 2521.2 (2640-118.8)

BARNES 1980 93-22-23  
 93-24-45

BARNES 1980 180-00-00  
 180-0-0

FD ALUM. BARNES 1980 2657.12  
 ORIG 2635.38  
 S86-52-22E 2656.75

BARNES 1980 2657.13  
 ORIG 2635.38  
 S86-52-22E 2656.75

FD ALUM.