

Paper weight-110# (minimum)

Black nonfading ink required

U.S. PUBLIC LAND SURVEY MONUMENT RECORD

For Public Land Survey Corners In:
T. 4 N. R. 10 E. 4th P.M.
CORNER CODE INDEX

WI ADMINISTRATIVE CODE A-E 7.08 REQUIREMENT
REV 10/23/2004 USMONREC.DWG

UNION TWP

ROCK COUNTY WI

IF AVAILABLE
ROCK COUNTY COORDINATES PREFERRED

A	1	2	3	4	5	6	7	8	9	10	11	12	13	14	15	16	17	18	19	20	21	22	23	24	25	A
B			6				5					4				3				2				1		B
C																										C
D																										D
E																										E
F																										F
G																										G
H																										H
J																										J
K																										K
L																										L
M																										M
N																										N
O																										O
P																										P
Q																										Q
R																										R
S																										S
T																										T
U																										U
V																										V
W																										W
X																										X
Y																										Y
Z																										Z

PLACE MONUMENT SYMBOL AT PROPER LOCATION ON ABOVE INDEX

North _____ Elev. _____

East _____

Hor. Datum _____ Vert. Datum _____

LATITUDE _____ ELLIPS. HT. _____

LONGITUDE _____

NAD83(91) _____ NETWORK ADJ. YR 2010

GPS (X) _____ TRAVERSE (X)

BASED ON THE FOLLOWING CONTROL:

CORNER MONUMENT

WITNESS MONUMENT

(a)

ROCK COUNTY PROJECTION
BEARINGS ARE BASED ON: -----

FIELD BOOK _____ PAGE # _____
OR OBSERVATION SHEET _____

SHEET 1 OF 4

SHOW A PLAN VIEW DRAWING DEPICTING THE CORNER MONUMENT AND SURROUNDING PHYSICAL FEATURES, INCLUDING THE EXCAVATION AREA AND DEPTH.

PLANNING & ZONING COMMITTEE ADOPTED THIS FORM ON 12/2/1982

CORNER CODE A-21

UN511 NE CORSEC2

(B) Describe any record evidence, monument evidence, occupational evidence, testimonial evidence or any other material evidence you considered, and whether the monument was found or placed.

1833 MULLETT & BRINK T5N R10E VAR 8-10E WEST ON
SOUTH SIDE SEC 36
1320.00 RAPID STREAM PURE WATER 16.5' WIDE CRS
S.E
2640.00 SET QUARTER SEC POST BURR OAK 18 N84E
52.8'; BURR OAK 14 N48 1/2W 34.98'
3493.38 W OAK 16
5280.00 SET POST CORNER TO SECTIONS 35 & 36
BURR OAK 12 N86 1/2E 224.40'; WHITE OAK
18 N12W 39.60'
LAND ROLLING SECOND RATE. BURR OAK,
WHITE OAK, RED ROOT CRS

1833 BRINK SOUTH BOUNDARY OF T5N R10E WEST ON SOUTH
SIDE SECTION 35
33.66 W. OAK 18
2343.0 W. OAK 16
2640.00 SET QUARTER SECTION POST BURR OAK 12
N17E 35.64'; BUR OAK 14 N58W 53.46'
3564.0 A STREAM RAPID & PURE 10.56' NE
3781.8 BURR OAK 15
5280.00 SET POST CORNER TO SECTIONS 34 & 35
BURR OAK 10 N1 1/2W 29.7'; BURR OAK 14
N73W 52.14' LAND ROLLING GOOD SECOND
RATE BURR & W. OAK RED ROOT ROSE WILLOW
GRASS & C

1833 HARRISON T5N R10E NORTH BETWEEN SECTIONS 35 & 36
1650 CREEK 6.6' C. NE
2640.00 SET 1/4 SEC POST B. {BO 20 IN S32-45E
21.12'; B.O. 16 IN N45-15W 31.68'
3080.88 W. OAK 16
3564.0 B. OAK 18
4092 ENTER MARSH
5280.00 SET POST COR SEC 25,26,35,36 IN MARSH
POPPLE THICKET UNDERBRUSH 3 FT WATER
TOO WET TO MOUND
LAND ROLLING 2ND RATE B.W. & BLK OAK
OAK & HAZEL UNDERBRUSH RED ROOT,
INDIGO-PRAIRIE BOG ??

1833 HARRISON T4N R10E NORTH BET. SECS 1 & 2
2145.0 LEAVE PRAIRIE & ENTER TIMBER
2640.0 SET COR TO QUARTER SEC {BURR O 8" N87E
51.48'
5205.42 INT. N BDY 12.54' WEST OF POST {BLK O 24"
S50E 172.92', W O. 18" S51W 109.56'
LAND LEVEL 2ND RATE ALONG N 1/2
ROLLING 1ST RATE PRAIRIE SOUTH 1/2
NOV 5 1833

1870 RUGER AUG REMON-107 EAST ON NORTH LINE OF NW
1/4 SEC 1 ON A VAR 6-40; OFFSET NORTH 3.3'
INTERSECTED QUARTER LINE OF SECTION 36 T5
R10 1.32' NORTH OF SOUTH QUARTER CORNER OF
SAID SECTION. COR VAR 6-42
CONTINUED EAST ON NORTH LINE OF NE 1/4
SEC 1 ON SAME VARIATION AS ABOVE OFFSET
SOUTH 2.64' OFFSET SOUTH 1260.6' TO AVOID
MILL POND. CONTINUED EAST ON SAME
VARIATION AS ABOVE, AT

SEAL

Emboss
Arnold Barnes
Oct 24, 2011

SHEET 1 OF 4

CORNER CODE A-21

UN511 NE CORSEC2

- 5256.24 INTERSECTED EAST BOUNDARY LINE 1260.6' SOUTH OF NE CORNER FOUND REMAINS OF OLD STAKE AT CORNER. ALSO FOUND REMAINS OF STUMPS OF BOTH BEARING TREES. ESTABLISHED NORTH QUARTER CORNER OF SECTION 1 ON TOWN LINE AND EQUI-DISTANT FROM NE AND NORTH WEST CORNER OF SAID SECTION. IT BEING 2628.12' DISTANT FROM EACH. THE NORTH QUARTER POST OF SEC 1 IS 6.27' WEST OF THE SOUTH QUARTER POST OF SECTION 36 T5 R10. COR VAR 6-43
- 1870 RUGER AUG REMON-108 WEST ON NORTH LINE OF NE 1/4 SEC 2 ON A VAR 7-40; INTERSECTED QUARTER LINE OF SECTION 35 T5 R10 8.91' SOUTH OF QUARTER CORNER OF SAID SECTION. COR VAR 7-29' CONTINUED WEST ON NORTH LINE OF NW 1/4 SECTION 2 ON A VAR 7-20; AT
- 5211.36 INTERSECTED WEST BOUNDARY LINE 5.94' SOUTH OF CORNER COR VAR 7-12 FOUND OLD STAKE AT CORNER ALSO FOUND STUMP OF SOUTH BEARING TREE AND PUT IN NW CORNER OF SECTION FROM IT. ESTABLISHED NORTH QUARTER CORNER OF SECTION 2 IN THE TOWN LINE AND EQUI-DISTANT FROM THE NE AND NW CORNERS OF SAID SECTION. IT BEING EQUI-DISTANT FROM EACH 2605.68
- 1870 RUGER AUG REMON-106 NORTH ON WEST LINE OF SW 1/4 SEC 1 ON A VAR 6-45; AT
- 2659.80 INTERSECTED QUARTER LINE 7.26'. EAST OF QUARTER CORNER. FOUND OLD STAKE AT CORNER. COR. VAR 6-55' SEPTEMBER 2 1870 NORTH ON WEST LINE OF NW 1/4 SEC 1 ON A VAR 6-45 AT
- 2443.32 INTERSECTED NORTH BOUNDARY LINE 6.6' EAST OF CORNER FOUND OLD STAKE AT CORNER. ALSO FOUND WEST BEARING TREE. COR VAR 6-54
- 1871 GRAVES VOL 6 PG 353 STATES NOTHING ABOUT N 1/4 COR SEC 2. ESTABLISHED N/S 1/4 LINE OF SEC 35 & CALLS FOR N5-45E 5325 & SOUTH LINE OF SEC 35 AS 5267.13. COMMENCE AT THE CENTER OF SECTION (35) [CORNER PREVIOUSLY SEET] RUN SOUTH TO S 1/4 COR [COULD NOT BE FOUND TREES & STUMPS ALL GONE] WEST TO SE COR SEC 35 AND RUN SHORT LINE TO S 1/4 COR. SHORT 13.2' DIVIDED EQUAL IN THE CENTER AND SET A STAKE 0.99' WEST OF THE 1/4 CORNER IN ROCK COUNTY ON SECTION TWO, & EQUALLY DIVIDED THE SW 1/4 OF SE 1/4??? JOHN D SPEAR & MRS CLERK BY SETTING CORNERS AT 1,2,3,&4. SHOWS NE COR SEC 2 AS 15.18' WEST OF SE COR SEC 35
- 1884 RUGER VOL 2 PG 387 STONE MON. 2612.15 TO N 1/4 COR SEC 2 & 2443.32 TO STONE MON @ E 1/4 COR SEC 2
- 1947 SUNNY #5047 STATES NOTHING ABOUT MON. 2518.5 TO E/W FENCE LINE.
- 1959 BATTERMAN VOL 4 PG 36 RUGER MON. REFERENCED SAME. BELOIT SET ALSO CALLS FOR RUGER MON.
- 1959 BATTERMAN FIELD BOOK #99 PG 27 REFERENCED CORNER BUT STATES NOTHING ABOUT MONUMENT. DRAWING INDICATES CORNER IS IN MIDDLE OF RD INTERSECTION.
- 1971 BATTERMAN FIELD BOOK #163 PG 104 3-19-73?. DATE ON PG 105. 15X20X5 HOLE & FD NOTHING. DRAWING SHOWS EAST EDGE OF HOLE @ N/S CENTER PVMT OF N/S RD, ON CENTER PVMT OF E/W RD & WEST OF CENTER OF N/S PVMT RD.

David
Barnes
Oct 24, 2011

UN511 NE CORSEC2

1975 WILHELM VOL 5 PG 161 & #7008 FOUND 34.8' WEST OF SIGN POST, 4.3' NORTH OF CENTER OF E/W RD, & 6.5' WEST OF CENTER OF RD.

1975 WILHELM #7009 CALLS FOR REBAR. BEARING INDICATES IT IS ON LINE WITH THE E 1/4 COR SEC 2 & SE COR SEC 2 AND ALSO ON LINE WITH THE NW & N 1/4 COR SEC 2.

1976 WEIR #5051 TIE SHEET SW COR SEC 36 I SET ABOVE COR BY USE OF OLD RESURVEY NOTES OF CO. SURVEYOR GRAVES & HINTZ AND PLACED THE COR. ON LINE BETWEEN ROCK CO. CORNERS. SHOWS 3/4 REBAR FOR NW COR SEC 1 AS WEST OF CENTER OF FRANKLIN RD AND NORTH OF CENTER OF UNION DANE RD. SW COR SEC 36 IS 16.50 EAST OF NW COR SEC 1. SW IS 4' NORTH OF CENTER OF UNION DANE RD & 0.3' WEST OF EAST PVMT EDGE.

REPLACED BENT 12" ROD WITH ALUM. MON. DID NOT FIND CUT LIMESTONE. FD PIPE N87-55-39E 34.06, WHICH WAS CALLED FOR AS THE SE COR SEC 35 T5N R10E.

C) Was the corner restored through acceptance of (1) an obliterated evidence location, or, (2) a found perpetuated location?

DID NOT ACCEPT THE FD PIPE AS THE SE COR SEC 35 T5N R10E. RUGER'S 1870 MAP #7013 CALLS FOR A JOG OF 12.54. THE 1833 ORIGINAL GOVERNMENT SURVEY PLAT & FIELD NOTES CALL FOR A JOG OF 12.54. GRAVES 1871 NOTES CALL FOR A JOG OF 15.18. WEIR'S 1976 SURVEY CALLS FOR A JOG OF 16.50.

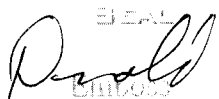
THERE IS A LARGE DISCREPANCY BETWEEN RUGER'S DISTANCE AND THE MEASURED DISTANCE TO THE E 1/4 COR SEC 2. HOWEVER, IN 1959 BATTERMAN STATES HE FD RUGER'S MON. SINCE I DID NOT FIND THE LIMESTONE WHILE PLACING THE ALUM. MON., IT APPEARS THE STONE WAS PROBABLY REMOVED.

D) Describe any material discrepancy between the location of the corner as restored or reestablished and the location of that corner as previously restored or reestablished by distance and direction. Show the discrepancy on the plan view drawing under (a), above. Show the distances between the corner as previously restored or reestablished and (1) the corner as restored or reestablished, and (2) to at least 4 of the witness monuments shown on the drawing in (a), above.

NONE

(E) Was the corner reestablished through lost corner proportionate methods? If so, show the method, including the directions and distances to other public land survey corners used as evidence or used for proportioning the corner location. NO

I, **Donald Barnes**, hereby certify that the corner location as identified by the corner code index was determined by me under my direction and control and that this U.S. Public Land Survey Monument Record is correct and complete to the best of my knowledge and belief.





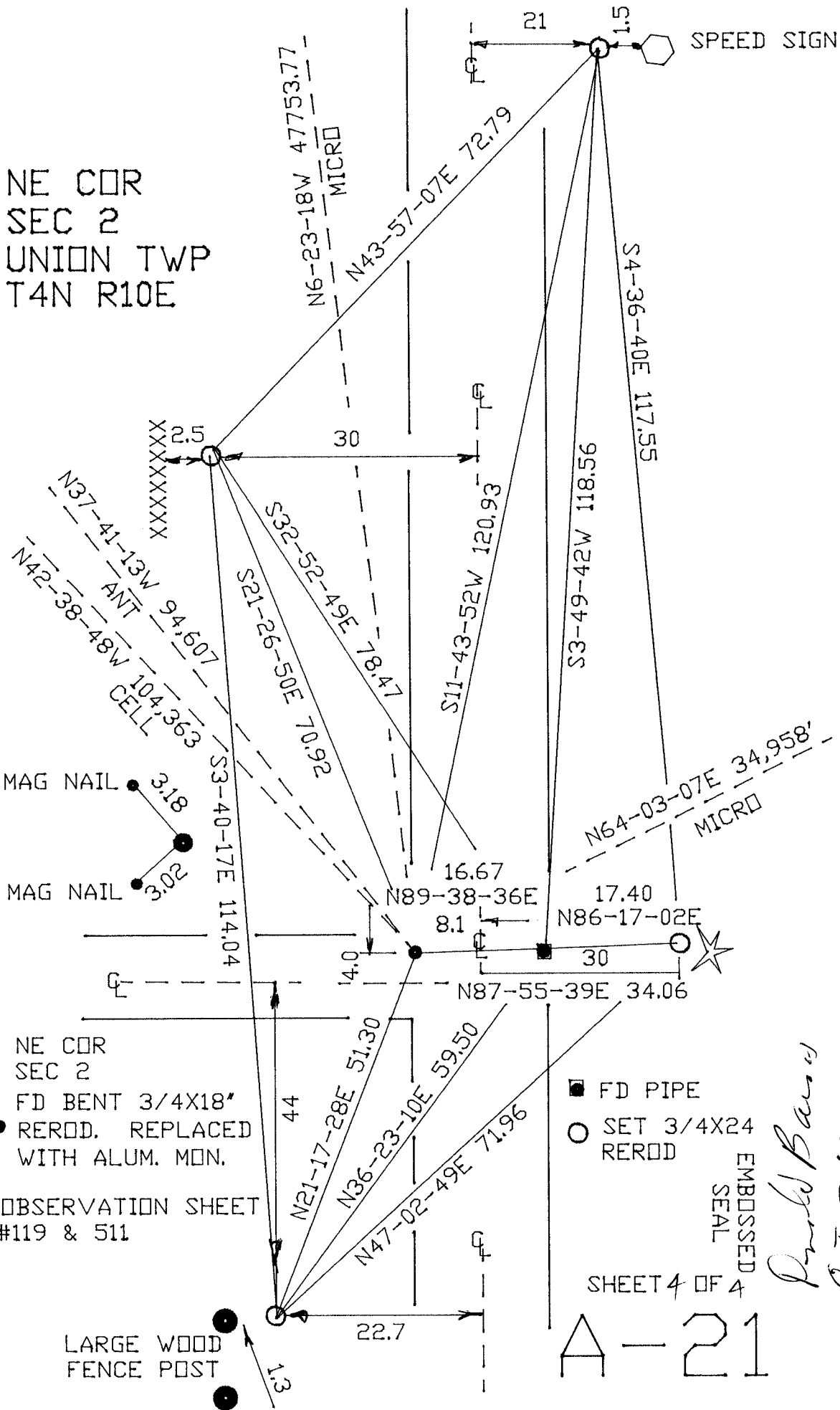
OCT 24, 2011

SHEET 3 OF 4

CORNER CODE A-21

A.E. 7.08 REQUIREMENT

NE COR
 SEC 2
 UNION TWP
 T4N R10E



Probed Bars of
OCT 24, 2011