

Paper weight-110# (minimum)

Black nonfading ink required

U.S. PUBLIC LAND SURVEY MONUMENT RECORD

For Public Land Survey Corners In:
T. 4 N. R. 10 E. 4th P.M.
CORNER CODE INDEX

WI ADMINISTRATIVE CODE A-E 7.08 REQUIREMENT
REV 10/23/2004 USMONREC.DWG

UNION TWP
ROCK COUNTY WI

IF AVAILABLE
ROCK COUNTY COORDINATES PREFERRED

A	1	2	3	4	5	6	7	8	9	10	11	12	13	14	15	16	17	18	19	20	21	22	23	24	25	A
B		6				5				4					3					2					1	B
C																										C
D																										D
E																										E
F																										F
G																										G
H																										H
I																										I
J																										J
K																										K
L																										L
M																										M
N																										N
O																										O
P																										P
Q																										Q
R																										R
S																										S
T																										T
U																										U
V																										V
W																										W
X																										X
Y																										Y
Z																										Z

North _____ Elev. _____
 East _____
 Hor. Datum _____ Vert. Datum _____
 LATITUDE _____ ELLIPS. HT. _____
 LONGITUDE _____
 NAD83(91) _____ NETWORK ADJ. YR 2010
 GPS (X) _____ TRAVERSE (X) X
 BASED ON THE FOLLOWING CONTROL:

◆ CORNER MONUMENT ○ WITNESS MONUMENT

(a) BEARINGS ARE BASED ON: --- ROCK COUNTY PROJECTION ---

FIELD BOOK _____ PAGE # _____
 OR OBSERVATION SHEET _____

SHEET 1 OF 2

SHOW A PLAN VIEW DRAWING DEPICTING THE CORNER MONUMENT AND SURROUNDING PHYSICAL FEATURES, INCLUDING THE EXCAVATION AREA AND DEPTH.

PLANNING & ZONING COMMITTEE ADOPTED THIS FORM ON 12/2/1982

CORNER CODE C-21

UN519 W1/4CORSEC1

(B) Describe any record evidence, monument evidence, occupational evidence, testimonial evidence or any other material evidence you considered, and whether the monument was found or placed.

1833 HARRISON T4N R10E NORTH BET. SECS 1 & 2

2145.0 LEAVE PRAIRIE & ENTER TIMBER
2640.0 SET COR TO QUARTER SEC {BURR O 8"
N87E 51.48'
5205.42 INT. N BDY 12.54' WEST OF POST {BLK O
24" S50E 172.92', W.O. 18" S51W
109.56'
LAND LEVEL 2ND RATE ALONG N 1/2
ROLLING 1ST RATE PRAIRIE SOUTH 1/2
NOV 5 1833

1870 RUGER AUG REMON-106 NORTH ON WEST LINE OF SW
1/4 SEC 1 ON A VAR 6-45; AT

2659.80 INTERSECTED QUARTER LINE 7.26'. EAST OF
QUARTER CORNER. FOUND OLD STAKE AT
CORNER. COR. VAR 6-55' SEPTEMBER 2 1870
NORTH ON WEST LINE OF NW 1/4 SEC 1 ON A
VAR 6-45 AT

2443.32 INTERSECTED NORTH BOUNDARY LINE 6.6' EAST
OF CORNER FOUND OLD STAKE AT CORNER.
ALSO FOUND WEST BEARING TREE. COR VAR 6-
54

1884 RUGER VOL 2 PG 387 STONE MON. 2443.32 TO STONE MON
@ NE COR SEC 2, 2659.8 TO SE COR SEC 2, 2613.60 TO HH
20X14X9 SURROUNDED BY 4 HH @ CENTER OF SEC 2, &
5222.91 TO STONE MON. @ W 1/4 COR SEC 2

1947 SUNNY #5047 STATES NOTHING ABOUT MON. SHOWS E/W
FENCE LINE & 2518.5 TO NORTH SEC LINE.

1959 BATTERMAN VOL 4 PG 36 RUGER MON. REFERENCED
SAME.

1961 NOTE ONLY IN BELDIT SET OF RECORDS. RESET 1" PIPE IN
BLACKTOP.

1975 WILHELM #7008 CALLS FOR IRON PIPE @ CENTER OF SEC 2.
FD 3/4 IP FROM COUNTY TIES. SO-00-02W 2665.99 TO
COUNTY MON @ SE COR SEC 2 & NO-00-02E 2519.37 TO
REBAR @ NE COR SEC 2

1975 WILHELM VOL 5 PG 161 FD 3/8 IP FROM COUNTY TIES. SO-
00-02W 2665.99 TO COUNTY MON @ SE COR SEC 2 & NO-00-
02E 2519.37 TO REBAR @ NE COR SEC 2

FD PINCHED PIPE & REFERENCE PIPES.

C) Was the corner restored through acceptance of (1) an obliterated evidence location, or, (2) a found perpetuated location?

ACCEPTED FD PERPETUATED LOCATION.

D) Describe any material discrepancy between the location of the corner as restored or reestablished and the location of that corner as previously restored or reestablished by distance and direction. Show the discrepancy on the plan view drawing under (a), above. Show the distances between the corner as previously restored or reestablished and (1) the corner as restored or reestablished, and (2) to at least 4 of the witness monuments shown on the drawing in (a), above. NONE

(E) Was the corner reestablished through lost corner proportionate methods? If so, show the method, including the directions and distances to other public land survey corners used as evidence or used for proportioning the corner location. NO

I, **Donald Barnes**, hereby certify that the corner location as identified by the corner code index was determined by me under my direction and control and that this U.S. Public Land Survey Monument Record is correct and complete to the best of my knowledge and belief.

BEAL
Barnes
Donald Barnes
Oct 20, 2011

SHEET 1 OF 2

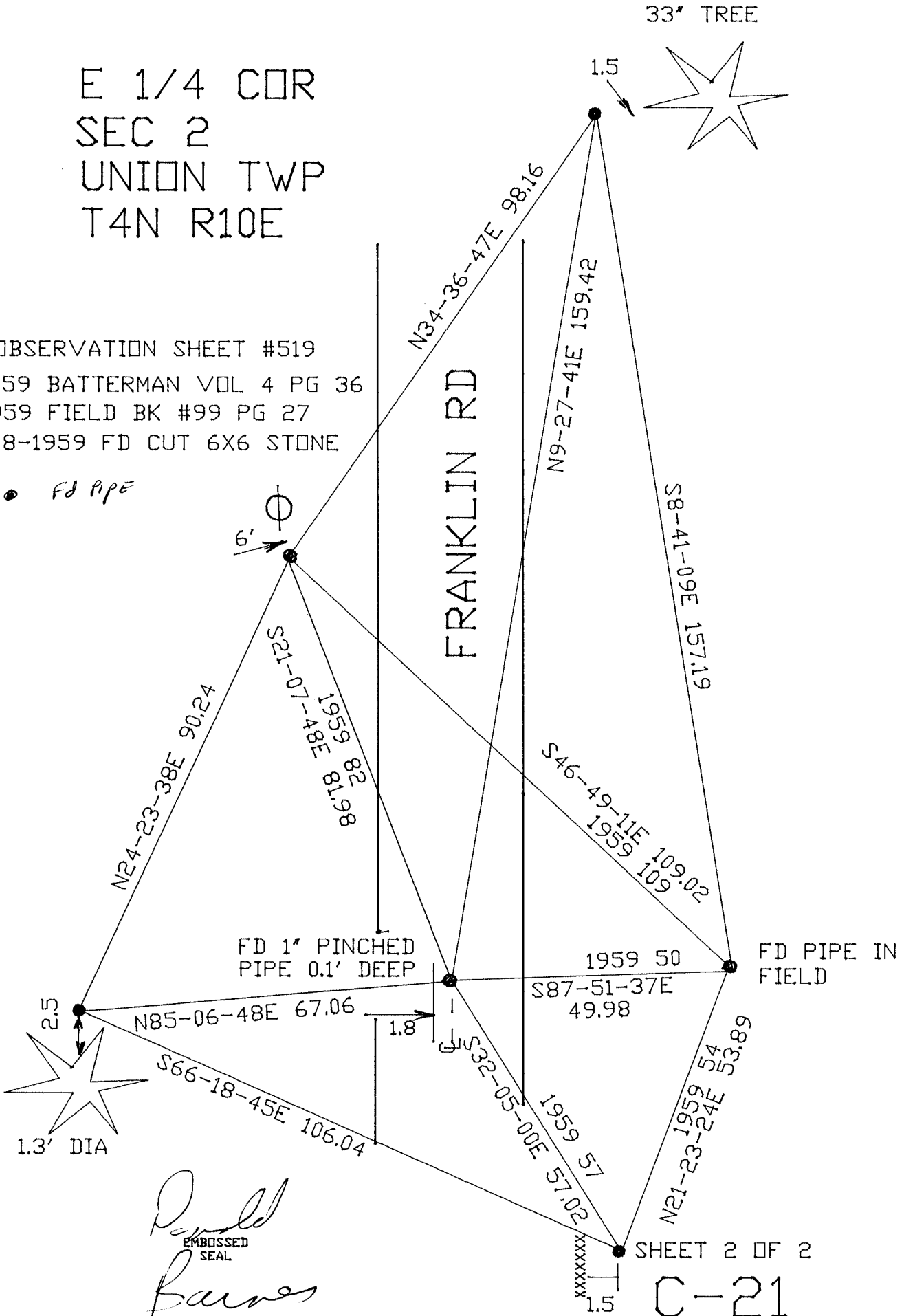
CORNER CODE C-21

A.E. 7.08 REQUIREMENT

E 1/4 COR
 SEC 2
 UNION TWP
 T4N R10E

OBSERVATION SHEET #519
 1959 BATTERMAN VOL 4 PG 36
 1959 FIELD BK #99 PG 27
 10-8-1959 FD CUT 6X6 STONE

● FD PIPE



Donald Barnes
 EMBOSSED SEAL
Barnes
 OCT 20, 2011

SHEET 2 OF 2
 C-21