

Paper weight-110# (minimum)

Black nonfading ink required

U.S. PUBLIC LAND SURVEY MONUMENT RECORD

For Public Land Survey Corners In:
T. 4 N. R. 10 E. 4th P.M.
CORNER CODE INDEX

WI ADMINISTRATIVE CODE A-E 7.08 REQUIREMENT
REV 10/23/2004 USMONREC.DWG

UNION TWP
ROCK COUNTY WI

IF AVAILABLE
ROCK COUNTY COORDINATES PREFERRED

A	1	2	3	4	5	6	7	8	9	10	11	12	13	14	15	16	17	18	19	20	21	22	23	24	25	A
B			6				5					4				3				2				1		B
C																										C
D																										D
E																										E
F																										F
G																										G
H																										H
J																										J
K																										K
L																										L
M																										M
N																										N
O																										O
P																										P
Q																										Q
R																										R
S																										S
T																										T
U																										U
V																										V
W																										W
X																										X
Y																										Y
Z																										Z

North _____ Elev. _____

East _____

Hor. Datum _____ Vert. Datum _____

LATITUDE _____ ELLIPS. HT. _____

LONGITUDE _____

NAD83(91) _____ NETWORK ADJ. YR 2010 _____

GPS (X) _____ TRAVERSE (X) X

BASED ON THE FOLLOWING CONTROL:

PLACE MONUMENT SYMBOL AT PROPER LOCATION ON ABOVE INDEX

CORNER MONUMENT WITNESS MONUMENT

(a) BEARINGS ARE BASED ON: ROCK COUNTY PROJECTION

FIELD BOOK _____ PAGE # _____
OR OBSERVATION SHEET 301 of 323

SHEET 1 OF 4

SHOW A PLAN VIEW DRAWING DEPICTING THE CORNER MONUMENT AND SURROUNDING PHYSICAL FEATURES, INCLUDING THE EXCAVATION AREA AND DEPTH.

PLANNING & ZONING COMMITTEE ADOPTED THIS FORM ON 12/2/1982

CORNER CODE 2-21

UN631 SECORSEC35

(B) Describe any record evidence, monument evidence, occupational evidence, testimonial evidence or any other material evidence you considered, and whether the monument was found or placed.

1833 BRINK & MULLETT (SEP 12) T4N R10E VAR 8-15E
WEST PM ON SOUTH SIDE OF SECTION 36
(PG 107)

2640.00 SET QUARTER SECTION POST IN PRAIRIE AND
MADE A MOUND
4554.0 LEAVE PRAIRIE
5280.0 SET POST FOR CORNER TO SECTIONS 35 & 36
BUR OAK 16 N44W 145.2'; BUR OAK 12 N37
12E 25.08'
LAND LEVEL SECOND RATE PRAIRIE LOW
WILLOW GRASS G? & @ WEST OF PRAIRIE BURR
OAK & RED ROOT GRASS

1833 BRINK & MULLETT (SEP 12) T4N R10E
WEST ON SOUTH SIDE OF SECTION 35 (PG 107)

1351.02 BURR OAK 16
2640.00 SET QUARTER SECTION POST BURR OAK 10
N53E 52.80', BURR OAK 10 N30 1/2W 64.68'
3079.56 BURR OAK 10
5016.00 ENTER MARSH OR CREEK BOTTOM
5280.00 SET POST FOR CORNER TO SECTIONS 34 &
35. BURR OAK 8 N19W 110.88', BURR OAK 14
151.14'. LAND ROLLING SECOND RATE BURR
OAK ? OAK HIGH RED ROOT.

1833 HARRISON (DEC 2) NORTH BET. SECS 1 & 2 T3N R10E

1958.88 BURR O. 12
2640.00 SET QUARTER SEC. COR. BEARING {RED O
10 N85E 264' BURR O 10 N15W 330' RED O
10; BURR O 10} MARKED
4894.56 INT. N. BDY AT POST {BURR O 12 S8W 54.12'
BURR O 12 S50E 77.88' LAND LEVEL 2ND
RATE TIMBER ALL BURR O OF A DWARF
CHARACTER. DEC 2ND 1833 GEO. W.
HARRISON

1833 HARRISON (NOV 5TH) NORTH BETWEEN SECS 35 & 36 VAR
8-15E

2640.00 SET CORNER TO QUARTER SEC {BURR O 10
S33W 49.55'; BURR O 10 S65E 40.26' BURR
O 10 & BURR O 10} MARKED
4950.0 ENTER PRAIRIE
5280.00 SET COR TO SECS 25, 26, 35, & 36 {BURR O
10 N75W 162.36' BURR O 18 S66W 217.8'
NOT OTHERS CONVENENT
LAND LEVEL 2ND RATE TIMBER ?? BURR O. ??
GRASS & WEEDS.

1856 MAGNOLIA TWP RD BK 1 PG 18 A HIGHWAY BE LAID OUT IN
SAID TOWN OF THE WIDTH OF FOUR RODS, AND CAUSED A
SURVEY, THEREOF TO BE MADE AS FOLLOWS; BEGINNING
NEAR THE NE CORNER OF SEC 2 IN SAID TOWN RUNNING
THENCE WEST ALONG THE NORTH LINE OF SAID SEC 2, TO
THE ROAD LEADING FROM MAGNOLIA TO EVANSVILLE, THE
WHOLE WIDTH OF FOUR RODS IN MAGNOLIA.

1867 LOCKE VOL 1 PG 301 FD STUMP OF NW BT & OLD STAKE -
SET BR. O. STAKE WITH SMALL LIMESTONE ON S & W AND
SMALL HH N & E & LARGE HH ON W IN MOUND. VAR 6-55
2621.19 TO S 1/4 COR SEC 36 & VAR 6-55 5242.38 TO SE
COR SEC 36.

SEAL

Donald Barnes
EIT 103

Sep 2, 2011

SHEET 1 OF 4

CORNER CODE **Z-21**

UN631 SECORSEC35
1867 LOCKE VOL 1 PG 303 & #5277 SEE SEC 36. VAR 7-25
2628.12 TO S 1/4 COR SEC 35 & VAR 7-25 5256.24 TO SW
COR SEC 35.
1870 RUGER AUG 17 REMON-62 WEST ON SOUTH LINE OF SE 1/4
SEC 35 ON A VAR 7-20 OFFSET SOUTH 26.40' OFFSET
NORTH 29.7' AT
2632.74 INTERSECTED QUARTER LINE 0.66' SOUTH OF
QUARTER CORNER FOUND POST SURROUNDED
BY STONES SET BY LOCKE AT CORNER. COR
VAR 7-15
WEST ON SOUTH LINE OF SW 1/4 SEC 35
ON A VAR 7-20 OFFSET NORTH 18.81' AT
2631.42 INTERSECTED WEST BOUNDARY LINE 13.20'
NORTH OF CORNER. FOUND FENCE POST ON
CORNER ALSO EAST BEARING TREE AND
STUMP OF WEST BEARING TREE. COR VAR 7-
13
1870 RUGER AUG REMON-61 EAST ON SOUTH LINE OF SW 1/4 SEC
36 ON A VAR 6-50 OFFSET NORTH 7.92' AT
2626.8 INTERSECTED QUARTER LINE 16.5' NORTH OF
QUARTER CORNER, FOUND STAKE SET BY
LOCKE AT COR.
COR VAR 6-39
EAST ON SOUTH LINE OF SE 1/4 SEC 36
ON A VAR 6-10 OFFSET SOUTH 1.98' AT
2625.15 INTERSECTED EAST BOUNDARY LINE 6.6'
SOUTH OF CORNER. FOUND STAKE SET BY
LOCKE AT CORNER. COR. VAR 6-16
1870 RUGER AUG REMON-60 SOUTH ON WEST LINE OF NW 1/4
SEC 36 ON A VAR 7-00 OFFSET EAST
3.3' OFFSET WEST 11.22' AT
2652.54 INTERSECTED QUARTER LINE 6.6' WEST OF
QUARTER COR. FOUND STAKE SET BY LOCKE
AND REMAINS OF BOTH STUMPS OF BEARING
TREES. COR VAR 6-58
SOUTH ON WEST LINE OF SW 1/4 SEC 36
ON A VAR 6-30 AT
2653.20 INTERSECTED SOUTH BOUNDARY LINE 11.22'
WEST OF CORNER. FOUND STAKE
SURROUNDED BY STONES SET BY LOCKE AT
COR. FOUND STUMP OF NW BEARING TREE
AND WHERE STUMP OF NE BEARING TREE HAD
BEEN DUG UP. COR VAR 6-45
1978 BARNES VOL 5 PG 410 DUG & FD CUT LIMESTONE 1' DEEP.
PLACED IP HORIZONTALLY NEXT TO STONE. REF SAME.
STONE IS 2' EAST OF N/S FENCE LINE & ON LINE WITH E/W
FENCE LINE
1979 ANDERSON CSM VOL 9 PG 128 FD STONE MON. CSM IN
SEC 1 MAGNOLIA TWP.
1980 BARNES VOL 6 PG 27 FD CUT LIMESTONE. 277,293.9X;
2,196,232.2X. S89-36-3E 2626.51 TO S 1/4 COR SEC 36,
NO-11-08W 2654.94 TO CUT LIMESTONE @ W 1/4 COR SEC
36, SO-35-09E 2276.65 TO FD ALUM MON @ W 1/4 COR SEC
1. LAT 42-45-39 LONG 89-16-10
1994 BARNES VOL 6 PG 440 STATES NOTHING ABOUT MON. S89-
36-51E 2626.51 TO FD ALUM @ S 1/4 COR SEC 36, NO-11-
04W 2655.13 TO W 1/4 COR SEC 36, SO-35-09W 2276.66
TO FD ALUM @ W 1/4 COR SEC 1

SEAL
Donald Barnes
Emboss

Sep 2, 2011

SHEET 2 OF 4

CORNER CODE **Z-21**

UN631 SECORSEC35

2007 COMBS CSM VOL 31 PG 86 LS 589-41-42W 2634.44 TO LS
@ S 1/4 COR SEC 35

FD CUT LIMESTONE 0.3' DEEP WITH R/R SPIKE ON NORTH EDGE.
PLACED 2 MAGNETS ON WEST SIDE OF L.S. LS IS 2.7' EAST OF N/S
FENCE LINE & 1.4' NORTH OF E/W FENCE LINE. SET CARSONITE
POST IN N/S FENCE LINE & OPPOSITE OF L.S. FD 2 REFERENCE
PIPES. CORNER IS ALSO THE NE COR OF SEC 2 MAGNOLIA TWP.

C) Was the corner restored through acceptance of (1) an obliterated evidence location, or, (2) a found perpetuated location?

ACCEPTED FD LS.

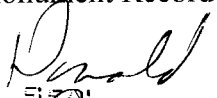

D) Describe any material discrepancy between the location of the corner as restored or reestablished and the location of that corner as previously restored or reestablished by distance and direction. Show the discrepancy on the plan view drawing under (a), above. Show the distances between the corner as previously restored or reestablished and (1) the corner as restored or reestablished, and (2) to at least 4 of the witness monuments shown on the drawing in (a), above.

NONE

(E) Was the corner reestablished through lost corner proportionate methods? If so, show the method, including the directions and distances to other public land survey corners used as evidence or used for proportioning the corner location.

NO

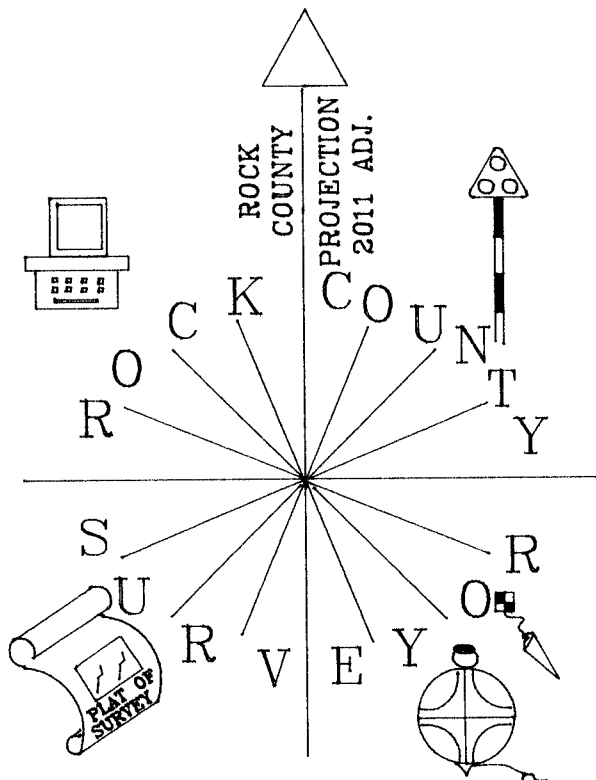
I, **Donald Barnes**, hereby certify that the corner location as identified by the corner code index was determined by me under my direction and control and that this U.S. Public Land Survey Monument Record is correct and complete to the best of my knowledge and belief.


E111033

E111033

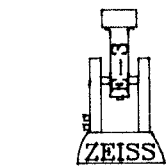
SHEET 3 OF 4

Sep 2, 2011

CORNER CODE **Z-21**
A.E. 7.08 REQUIREMENT



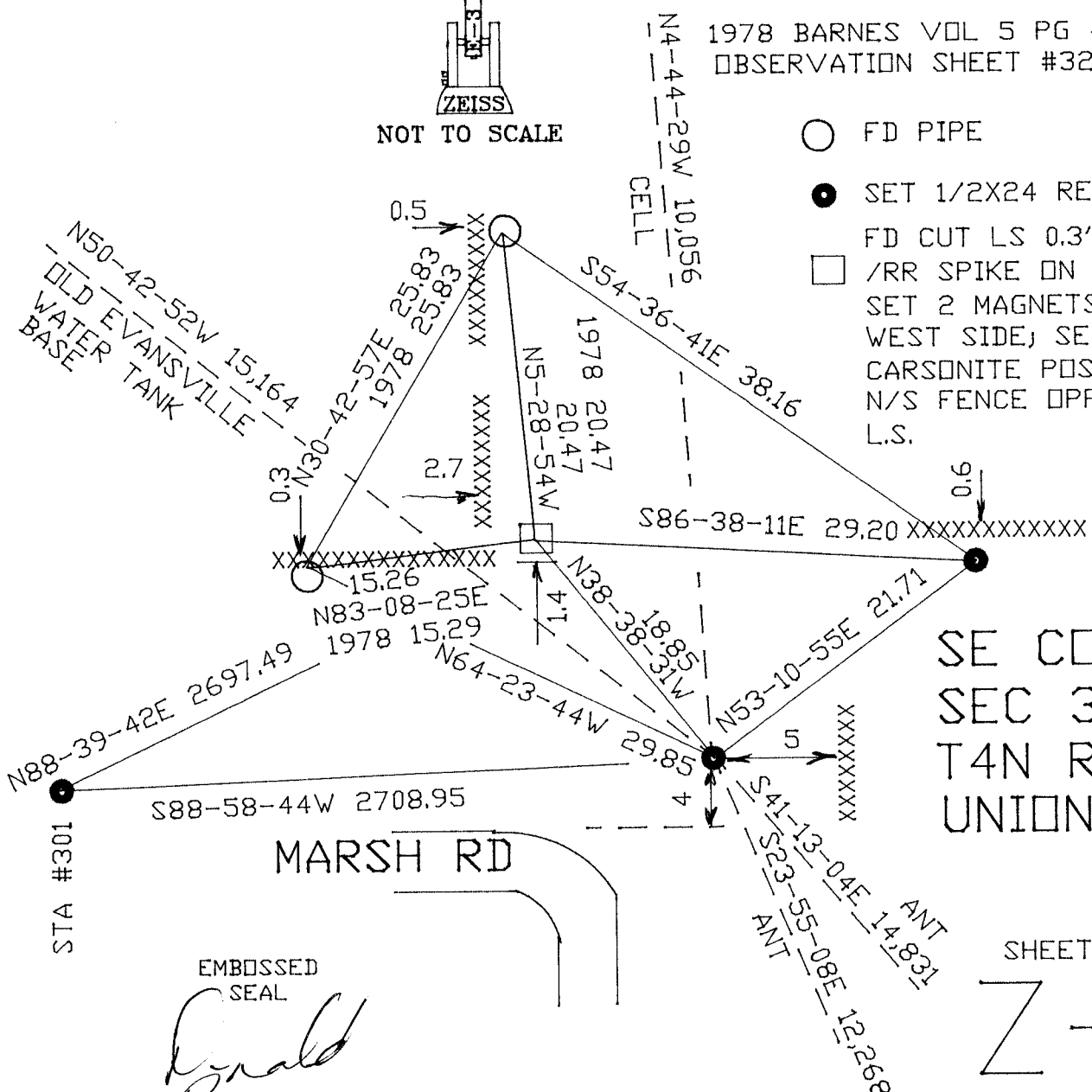
ROCK COUNTY
SURVEY
PROJECTION
2011 ADJ.



NOT TO SCALE

1978 BARNES VOL 5 PG 410
OBSERVATION SHEET #323

- FD PIPE
- SET 1/2X24 REROD
- FD CUT LS 0.3' DEEP
- /RR SPIKE ON NORTH SIDE, SET 2 MAGNETS ON WEST SIDE, SET CARSONITE POST IN N/S FENCE OPPOSITE L.S.



SE COR
SEC 35
T4N R10E
UNION TWP

SHEET 4 OF 4

Z-21

EMBOSSSED SEAL

Ronald Barnes

Sep 2, 2011