

Paper weight-110# (minimum) Black nonfading ink required

U.S. PUBLIC LAND SURVEY MONUMENT RECORD

For Public Land Survey Corners In:
T. 4 N. R. 10 E. 4th P.M.
 CORNER CODE INDEX

WI ADMINISTRATIVE CODE A-E 7.08 REQUIREMENT
 REV 10/23/2004 USMONREC.DWG

UNION TWP
ROCK COUNTY WI

IF AVAILABLE
 ROCK COUNTY COORDINATES PREFERRED

A	1	2	3	4	5	6	7	8	9	10	11	12	13	14	15	16	17	18	19	20	21	22	23	24	25	A
B		6				5					4				3				2				1			B
C																										C
D																										D
E																										E
F																										F
G																										G
H																										H
J																										J
K																										K
L																										L
M																										M
N																										N
O																										O
P																										P
Q																										Q
R																										R
S																										S
T																										T
U																										U
V																										V
W																										W
X																										X
Y																										Y
Z																										Z

1 2 3 4 5 6 7 8 9 10 11 12 13 14 15 16 17 18 19 20 21 22 23 24 25
 PLACE MONUMENT SYMBOL **◆** AT PROPER LOCATION ON ABOVE INDEX

North _____ Elev. _____
 East _____
 Hor. Datum _____ Vert. Datum _____
 LATITUDE _____ ELLIPS. HT. _____
 LONGITUDE _____
 NAD83(91) _____ NETWORK ADJ. YR 2010
 GPS (X) _____ TRAVERSE (X) X
 BASED ON THE FOLLOWING CONTROL:

◆ CORNER MONUMENT ○ WITNESS MONUMENT

BEARINGS ARE BASED ON: --- ROCK COUNTY PROJECTION ---

FIELD BOOK _____ PAGE # _____
 OR OBSERVATION SHEET _____

SHEET 1 OF 2

SHOW A PLAN VIEW DRAWING DEPICTING THE CORNER MONUMENT AND SURROUNDING PHYSICAL FEATURES, INCLUDING THE EXCAVATION AREA AND DEPTH.

PLANNING & ZONING COMMITTEE ADOPTED THIS FORM ON 12/2/1982

CORNER CODE X-2/

UN619 W1/4CORSEC36

(B) Describe any record evidence, monument evidence, occupational evidence, testimonial evidence or any other material evidence you considered, and whether the monument was found or placed.

1833 HARRISON (NOV 5TH) NORTH BETWEEN SECS 35 & 36 VAR
B-15E

2640.00 SET CORNER TO QUARTER SEC {BURR O 10
S33W 49.55'; BURR O 10 S65E 40.26' BURR
O 10 & BURR O 10} MARKED

4950.0 ENTER PRAIRE

5280.00 SET COR TO SECS 25, 26, 35, & 36 {BURR O
10 N75W 162.36' BURR O 18 S66W 217.8'
NOT OTHERS CONVENENT
LAND LEVEL 2ND RATE TIMBER ?? BURR O. ??
GRASS & WEEDS.

1867 LOCKE VOL 1 PG 301 & #5277 FD OLD STAKE & WHERE BTS
WERE DUG OUT - SET BR. O. STAKE IN MOUND. USED TO
SUBDIVIDE SEC 36. VAR 7-00 TO E 1/4 COR SEC 36

1870 RUGER AUG REMON-60 SOUTH ON WEST LINE OF NW 1/4 SEC
36 ON A VAR 7-00 OFFSET EAST 3.3' OFFSET WEST 11.22'
AT

2652.54 INTERSECTED QUARTER LINE 6.6' WEST OF
QUARTER COR. FOUND STAKE SET BY LOCKE
AND REMAINS OF BOTH STUMPS OF BEARING
TREES. COR VAR 6-58

SOUTH ON WEST LINE OF SW 1/4 SEC 36
ON A VAR 6-30 AT

2653.20 INTERSECTED SOUTH BOUNDARY LINE 11.22'
WEST OF CORNER. FOUND STAKE
SURROUNDED BY STONES SET BY LOCKE AT
COR. FOUND STUMP OF NW BEARING TREE
AND WHERE STUMP OF NE BEARING TREE HAD
BEEN DUG UP. COR VAR 6-45

1938 UNKOWN VOL 3 PG 371 USED TO SUBDIVIDE SEC 35. DOES
NOT STATE THE MON.

1980 BARNES VOL 6 PG 27 FD CUT LS NO-05-02W 2650.47 TO
CUT LS @ NW COR SEC 36, SO-11-08E 2654.94 TO FD CUT
LS @ SW COR SEC 36

1998 KNUDSON #8178 FD SQUARE STONE. NO-11-17W
2650.37 TO SQUARE STONE @ SW COR SEC 25

1999 KNUDSON #7227 REPEAT OF 1998 #8178

2001 COMBS #7956 & #14244 FD STONE MON. SB9-14-35E
5241.61 TO ALUM MON @ E 1/4 COR SEC 36, NB9-38-45W
5257.75 TO CUT STONE MON @ W 1/4 COR SEC 35

FD CUT LIMESTONE AT GRADE. LS IS SPLIT LENGTHWISE. LARGE
FENCE POST ON SW SIDE OF L.S. IN FARM FIELD.

C) Was the corner restored through acceptance of (1) an obliterated evidence location, or, (2) a found
perpetuated location?

ACCEPTED FD LIMESTONE.

D) Describe any material discrepancy between the location of the corner as restored or reestablished
and the location of that corner as previously restored or reestablished by distance and direction. Show
the discrepancy on the plan view drawing under (a), above. Show the distances between the corner as
previously restored or reestablished and (1) the corner as restored or reestablished, and (2) to at least 4
of the witness monuments shown on the drawing in (a), above. NONE

(E) Was the corner reestablished through lost corner proportionate methods? If so, show the method,
including the directions and distances to other public land survey corners used as evidence or used for
proportioning the corner location. NO

I, Donald Barnes, hereby certify that the corner location as identified by the corner code index
was determined by me under my direction and control and that this U.S. Public Land Survey
Monument Record is correct and complete to the best of my knowledge and belief.

Donald Barnes
Barnes

SHEET 1 OF 2

CORNER CODE X-21

A.E. 7.08 REQUIREMENT

Dec 30, 2011

CUT. L.S.
SPLIT LENGTHWISE

Ø 1/2X24 REROD

W 1/4 COR
SEC 36
UNION TWP
T4N R10E

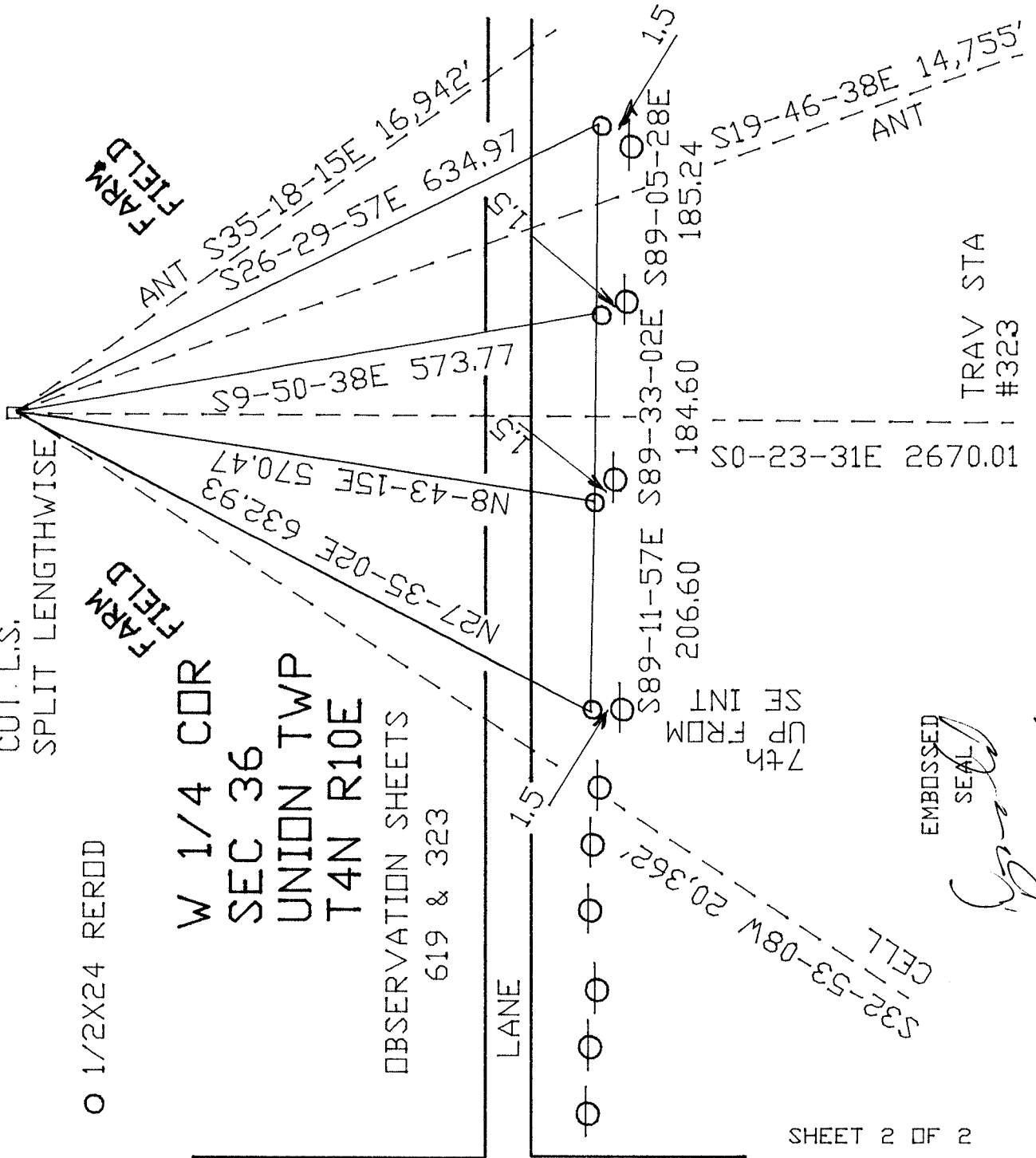
OBSERVATION SHEETS
619 & 323

LANE

CTH M

FARM FIELD

FARM FIELD



7th
CP FROM
SE INT

EMBOSSED
SEAL

[Signature]

Dec 30, 2011

SHEET 2 OF 2

X-21

S32-53-08W 20,362'