

U.S. PUBLIC LAND SURVEY MONUMENT RECORD

For Public Land Survey Corners in:

WI ADMINISTRATIVE CODE A-E 7.08 REQUIREMENT

T. 5 N., R. 14 E

CORNER CODE INDEX

KOSHKONONG TWP
ROCK COUNTY WI

IF AVAILABLE
ROCK COUNTY COORDINATES PREFERRED

1	2	3	4	5	6	7	8	9	10	11	12	13	14	15	16	17	18	19	20	21	22	23	24	25	
A																									
B	6																								
C		5																							
D			A																						
E				3																					
F					2																				
G	1																								
H		8																							
J			9																						
K				10																					
L	18				11																				
M						16																			
N							15																		
O								14																	
P									13																
Q	19					20																			
R							21																		
S								22																	
T									23																
U										24															
V											25														
W												26													
X													27												
Y														28											
Z															29										
																30									
																	31								
																		32							
																			33						
																				34					
																					35				
																						36			

PLACE MONUMENT SYMBOL \blacklozenge AT PROPER LOCATION ON ABOVE INDEX

North _____ Elev. _____

East _____

Hor. Datum _____ Vert. Datum _____

LATITUDE _____ ELLIPS. HT. _____

LONGITUDE _____

GPS (X) _____ TRAVERSE (X) _____

BASED ON THE FOLLOWING CONTROL:

\blacklozenge CORNER MONUMENT

\circ WITNESS MONUMENT

(a)

THOMAS WOLLIN, JEFFERSON COUNTY SURVEYOR,
PROVIDED THE STATE PLANE COORDINATES FOR
CORNER CODE #6901 CORSE SEC 31 T 5 N R 14 E

STATE PLANE COORDINATES N/S 310,103.922
NAD 1983/91 OF RECORD E/W 2,270,033.948

I DONALD BARNES CONVERTED THE ABOVE
COORDINATES TO THE FOLLOWING:

LATITUDE 42-50-42.91659
LONGITUDE 88-52-32.24779
MERIDIAN CONV. 0-46-21.2
SCALE FACTOR 0.9999793159

ROCK COUNTY COORDINATES (NAD 1983/91)

N/S 328,362.173
E/W 532,727.886
SCALE 0.9999991761

CONVERGENCE: THE ANGULAR DIFFERENCE
BETWEEN THE GEODETIC NORTH & THE ROCK
COUNTY MERCATOR NORTH

\oplus - DEG 0 MIN 08 SEC 01.3

BEARINGS ARE BASED ON:

Donald Barnes
2/12/03

SHEET 1 OF 1

FIELD BOOK _____ PAGE # _____

SHOW A PLAN VIEW DRAWING DEPICTING THE CORNER MONUMENT AND SURROUNDING PHYSICAL FEATURES, INCLUDING THE EXCAVATION AREA AND DEPTH.

PLANNING & ZONING COMMITTEE ADOPTED THE ABOVE FORM ON 12/2/1982

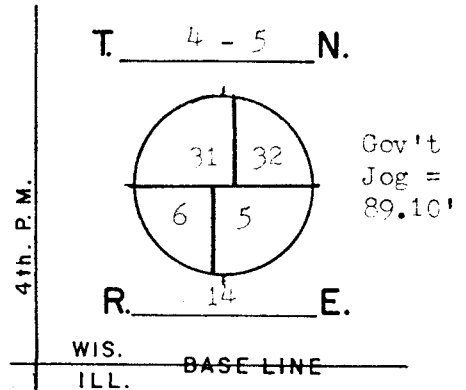
File in LIMA TWP
CORNER CODE A 5/6

GOVERNMENT LAND CORNER RECORD*

JEFFERSON COUNTY

CORNER NO. 6901

TYPE OF MONUMENT Aluminum Magnetized
 STATE PLANE COORDINATES N. 310103.922
NAD 1983/91 E. 2270033.048 SE-31
 ELEVATION M.S.L. DATUM: _____
Grid-Ground 1.0000567275
 FIELD BOOK Koshkonong p. 149
 DRAWN BY TRW



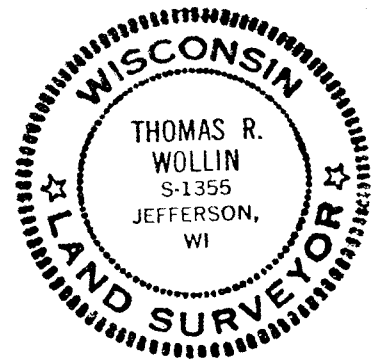
BASIS FOR MONUMENTATION

Original Survey, 1834-37, Wood Post & Bearing Trees Resurvey of Koshkonong Township, by Milo C. Jones, August-December, 1886. Field notes say that Bearing Tree evidence was found. From this evidence a limestone monument, Approx. 6" by 36" long with a squared finished top, was set for the corner. Notes recorded in the Register of Deeds, Miscellaneous Volume 1 pages 390-412.

1980, The stone monument was dug for and found by Rock County Surveyor. The stone was found about 3' below present road surface. The corner for Rock County was also found at a distance of 88.03' West of the Koshkonong stone. Aluminum Monuments were set for the corners.

3/12/2002, G.P.S. coordinates are assigned. A Topcon GP-SX1 single-frequency receiver was used.

SEAL:

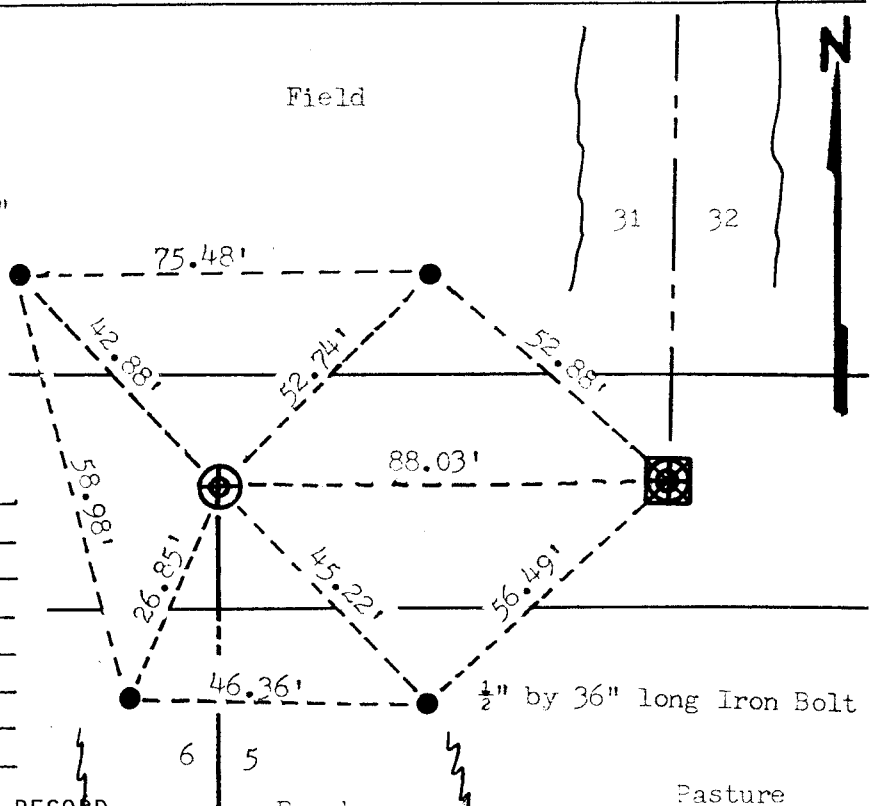


DATA SHOWN HERE ON CERTIFIED CORRECT:

Thomas R. Wollin
 REGISTERED LAND SURVEYOR
 DATED 6/29/1982

LOCATION SKETCH

- SQUARE CUT LIMESTONE 6" by 36"
- CONCRETE / BRASS CAP
- ALUMINUM MAGNETIZED 4" by 30"
- IRON PIPE
- RR SPIKE
- PK NAIL
- *** FENCE
- UTILITY POLE
- STEEL POST / SIGN



MAINTENANCE RECORD

DATE	INIT.	REMARKS

* U.S. PUBLIC LAND SURVEY MONUMENT RECORD