

U.S. PUBLIC LAND SURVEY MONUMENT RECORD

For Public Land Survey Corners in:

WI ADMINISTRATIVE CODE A-E 7.08 REQUIREMENT

T. 5 N., R. 14 E

CORNER CODE INDEX

A	1	2	3	4	5	6	7	8	9	10	11	12	13	14	15	16	17	18	19	20	21	22	23	24	25
B			6			5				4			3			2				1					
C																									
D																									
E																									
F																									
G			7			8			9			10			11			12							
H																									
J																									
K			18			17			16			15			14			13							
L																									
M																									
N																									
O																									
P			19			20			21			22			23			24							
Q																									
R																									
S																									
T			30			29			28			27			26			25							
U																									
V																									
W																									
X			31			32			33			34			35			36							
Y																									
Z																									

KOSH KONONG TWP
ROCK COUNTY WI

IF AVAILABLE
ROCK COUNTY COORDINATES PREFERRED

North _____ Elev. _____

East _____

Hor. Datum _____ Vert. Datum _____

LATITUDE _____ ELLIPS. HT. _____

LONGITUDE _____

GPS (X) _____ TRAVERSE (X) _____

BASED ON THE FOLLOWING CONTROL:

PLACE MONUMENT SYMBOL \blacklozenge AT PROPER LOCATION ON ABOVE INDEX

\blacklozenge CORNER MONUMENT \circ WITNESS MONUMENT

(a)

THOMAS WOLLIN, JEFFERSON COUNTY SURVEYOR, PROVIDED THE STATE (PLANE COORDINATES FOR CORNER CODE #6701, COR S 1/4 SEC 32 T 5 N R 14 E

STATE PLANE COORDINATES N/S 310, 022, 095
NAD 1983/91 OF RECORD E/W 2, 272, 679, 803

I DONALD BARNES CONVERTED THE ABOVE COORDINATES TO THE FOLLOWING:

LATITUDE 42-50-41.75448
LONGITUDE 88-51-56.74948
MERIDIAN CONV. 0-46-45.6
SCALE FACTOR 0.9999793702

ROCK COUNTY COORDINATES (NAD 1983/91)

N/S 328, 250, 842
E/W 535, 372, 817
SCALE 0.9999995027

CONVERGENCE: THE ANGULAR DIFFERENCE BETWEEN THE GEODETIC NORTH & THE ROCK COUNTY MERCATOR NORTH

\oplus DEG 0 MIN 08 SEC 25.4

BEARINGS ARE BASED ON:

Donald Barnes
2/12/03

FIELD BOOK _____ PAGE # _____

SHEET 1 OF 1

SHOW A PLAN VIEW DRAWING DEPICTING THE CORNER MONUMENT AND SURROUNDING PHYSICAL FEATURES, INCLUDING THE EXCAVATION AREA AND DEPTH.

PLANNING & ZONING COMMITTEE ADOPTED THE ABOVE FORM ON 12/2/1982

File in LIM A

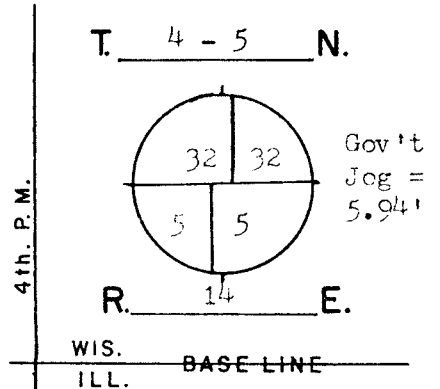
CORNER CODE A-7/8

GOVERNMENT LAND CORNER RECORD*

JEFFERSON COUNTY

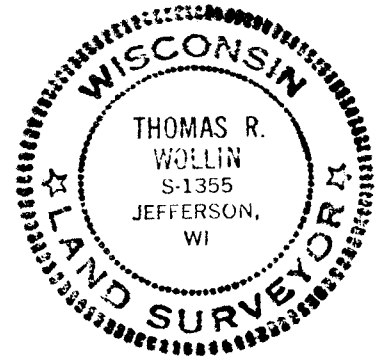
CORNER NO. 6701

TYPE OF MONUMENT Aluminum Magnetized & Stone
 STATE PLANE COORDINATES N. 310022.095
NAD 1983/91 E. 2272679.803 S₄-32
 ELEVATION M.S.L. DATUM: _____
 Grid-Ground 1.0000565284
 FIELD BOOK Koshkonong p. 46
 DRAWN BY TRW



Original Survey, 1834-37, Wood Post & Bearing Trees
 Resurvey of Koshkonong Township, by Milo C. Jones,
 August-December, 1886. Field notes say that the
 corner was set on a straight-line and equal distance
 between section corners. A Limestone monument, Approx.
 6" by 36" long with a squared finished top, was set
 for the corner. Notes recorded in Register of Deeds,
 Miscellaneous Volume 1, pages 389-412.
 1974, Dug & found the stone monument about 4' below
 road embankment. I set an Aluminum Magnetized Monument
 for the corner directly over the stone.
 1981, An Aluminum Monument was set for the N₄-5 by
 Rock County Surveyor. Corner was established on a
 straight-line between SW-32 & S₄-32 and equal distant
 between section corner.
 3/12/2002, G.P.S. coordinates are assigned. A Topcon
 GP-SX1 single-frequency receiver was used.

SEAL:

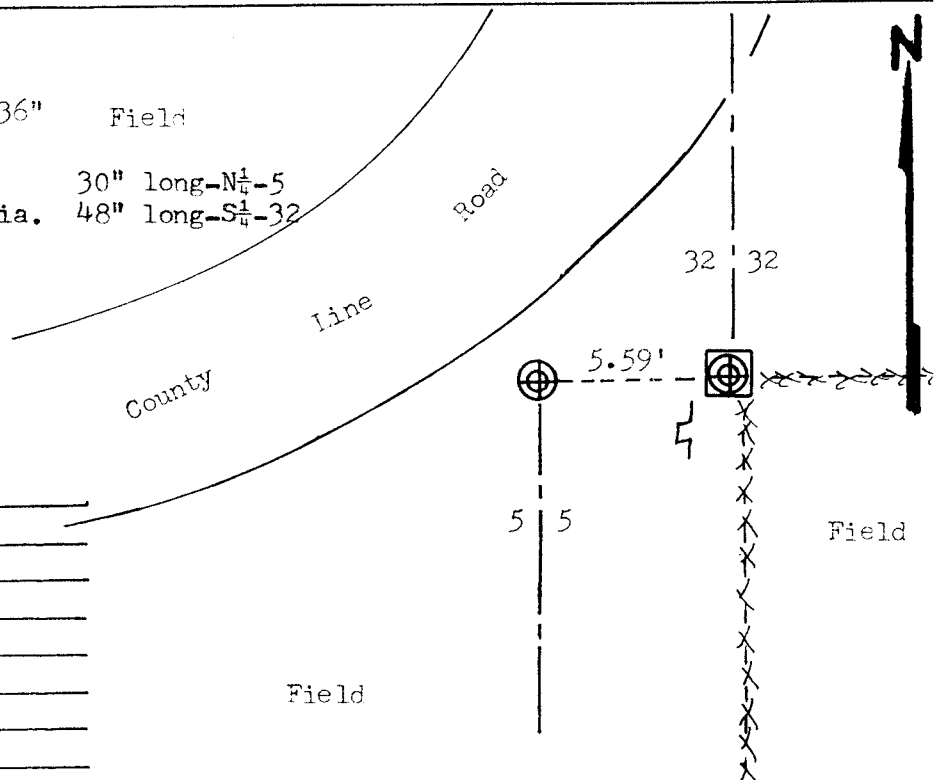


DATA SHOWN HERE ON
 CERTIFIED CORRECT:

Thomas R. Wollin
 REGISTERED LAND SURVEYOR
 DATED 5/12/1982

LOCATION SKETCH

- ☒ SQUARE CUT LIMESTONE 6" by 36" Field
- CONCRETE / BRASS CAP 30" long-N₄-5
- ⊕ ALUMINUM MAGNETIZED 4" Dia. 48" long-S₄-32
- IRON PIPE
- RR SPIKE
- + PK NAIL
- *** FENCE
- ⊗ UTILITY POLE
- ⌚ STEEL POST / SIGN



MAINTENANCE RECORD

DATE	INIT.	REMARKS