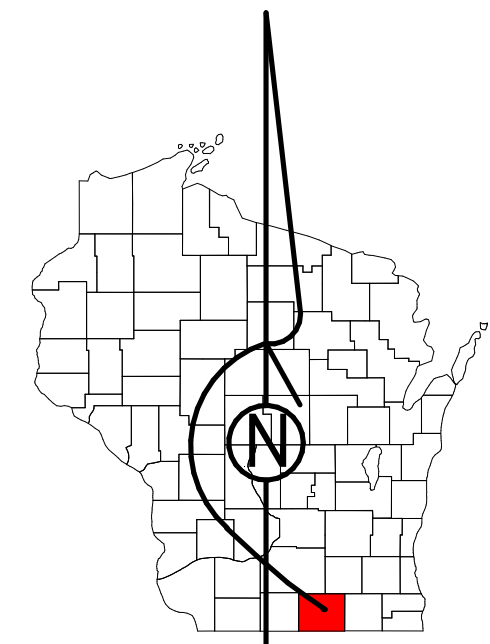


Property Division Map

City
of
Edgerton

T. 4 N. - R. 12 E.
Section 09 NENW



STATE OF WISCONSIN
COUNTY OF ROCK

PREPARED BY

REAL PROPERTY DESCRIPTION
DEPARTMENT

USING

ROCK COUNTY
GEOGRAPHIC INFORMATION SYSTEM

DUPLICATION OF THIS MAP PROHIBITED
WITHOUT THE WRITTEN CONSENT OF THE
REAL PROPERTY DESCRIPTION DEPARTMENT

THIS MAP WAS PREPARED PURSUANT
TO SECTION 310.07 WIS. STATS.
USING PUBLIC RECORDS. IT IS NOT INTENDED
TO BE A SUBSTITUTE FOR AN
ACTUAL FIELD SURVEY
AND IS ADVISORY ONLY.

DISTANCES SHOWN ON THIS
MAP WERE PRODUCED BY
THE GIS SYSTEM AND ARE
FOR REFERENCE ONLY.
SEE DOCUMENT OF RECORD
FOR ACTUAL DISTANCE.

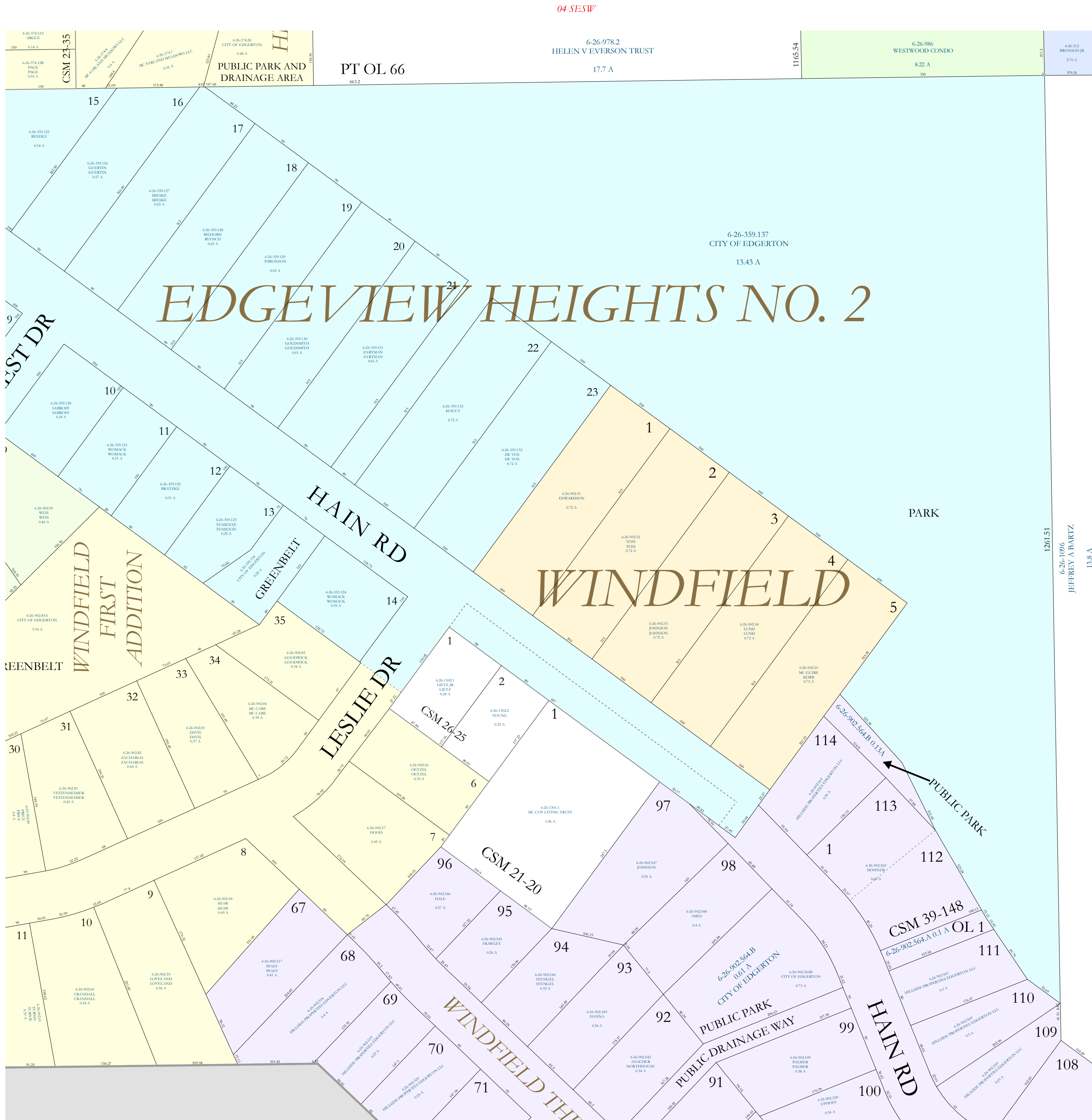
0 12.5 25 50 75 100
Feet

- | | | | |
|--|----------------|--|-------------|
| | Gap | | dam |
| | Overlap | | easement |
| | Town of Fulton | | hydro |
| | CSM | | lots |
| | CSM HYDRO | | parcels |
| | CSM LOT | | parcelhydro |
| | CSM LOT HYDRO | | roadw |
| | MFL | | |

See Pages

January 1, 2019

09 NENW



04 SE SW

6-26-978.2
HELEN V EVERSON TRUST
17.7 A

11.65.54

6-26-986
WESTWOOD CONDO
8.22 A

6-26-912
BRINSON JR
27.8 A

PT OL 66
66.2

6-26-359.137
CITY OF EDGERTON
13.43 A

EDGEVIEW HEIGHTS NO. 2

PARK

WINDFIELD

1261.51

6-26-1096
JEFFREY A BARTZ
13.8 A

09 SE NW

09 NW SW

09 SE NW