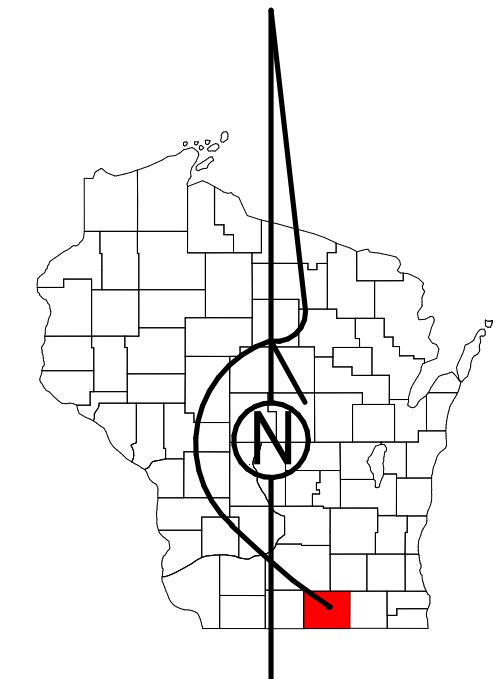


Property Division Map

Town
of
Bradford

T. 2 N. - R. 14 E.
Section 17 SW



STATE OF WISCONSIN
COUNTY OF ROCK

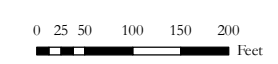
PREPARED BY

REAL PROPERTY DESCRIPTION
DEPARTMENT
USING
ROCK COUNTY
GEOGRAPHIC INFORMATION SYSTEM

DUPLICATION OF THIS MAP PROHIBITED
WITHOUT THE WRITTEN CONSENT OF THE
REAL PROPERTY DESCRIPTION DEPARTMENT.

THIS MAP WAS PREPARED PURSUANT
TO SECTION 70.09 WIS. STATS.
USING PUBLIC RECORDS. IT IS NOT INTENDED
TO BE A SUBSTITUTE FOR AN
ACTUAL FIELD SURVEY
AND IS ADVISORY ONLY.

DISTANCES SHOWN ON THIS
MAP WERE PRODUCED BY
THE GIS SYSTEM AND ARE
FOR REFERENCE ONLY.
SEE DOCUMENT OF RECORD
FOR ACTUAL DISTANCE.

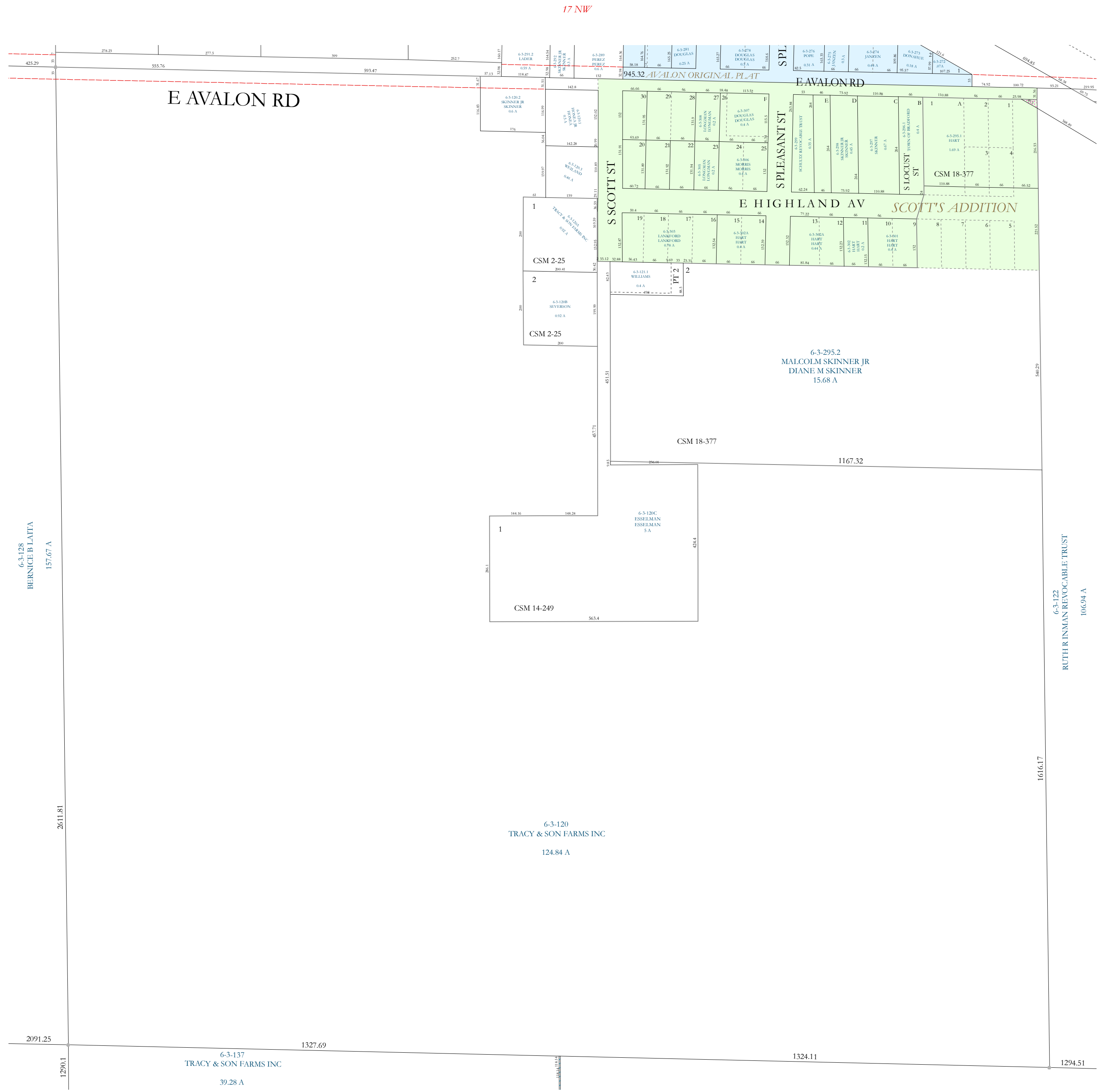


- | | | | |
|--|-------------|--|--------------|
| | Gap | | dam |
| | Overlap | | easement |
| | CSM | | hydro |
| | CSMHYDRO | | lots |
| | CSMLOT | | parcels |
| | CSMLOTHYDRO | | parcelshydro |
| | MFL | | roadw |

See Pages

January 1, 2019

17 SW



6-3-128
BERNICE B LATTI
157.67 A

6-3-122
RUTH R INMAN REVOCABLE TRUST
106.94 A

1616.17

6-3-120
TRACY & SON FARMS INC
124.84 A

6-3-137
TRACY & SON FARMS INC
39.28 A

6-3-295.2
MALCOLM SKINNER JR
DIANE M SKINNER
15.68 A

CSM 14-249

CSM 2-25

CSM 2-25

CSM 18-377

SCOTT'S ADDITION

045.32 AVALON ORIGINAL PLAT

SPL

S PLEASANT ST

S SCOTT ST

E HIGHLAND AV

E AVALON RD

S LOCUST ST

CSM 18-377

E AVALON RD

17 NW

2091.25 1290.1 1291.1 2611.81 1327.69 1324.11 1294.51