

U.S. PUBLIC LAND SURVEY MONUMENT RECORD

For Public Land Survey Corners In:

WISCONSIN ADMINISTRATIVE CODE A-E 7.08 REQUIREMENT

T. 03 N. R. 11 E. 4th P.M.

CENTER TWP
ROCK COUNTY WI

CORNER CODE INDEX

A	1	2	3	4	5	6	7	8	9	10	11	12	13	14	15	16	17	18	19	20	21	22	23	24	25	A
B																										B
C																										C
D																										D
E																										E
F																										F
G																										G
H																										H
J																										J
K																										K
L																										L
M																										M
N																										N
O																										O
P																										P
Q																										Q
R																										R
S																										S
T																										T
U																										U
V																										V
W																										W
X																										X
Y																										Y
Z																										Z

IF AVAILABLE
ROCK COUNTY COORDINATES PREFERRED

North 286458.312 Elev. _____

East 437555.730

Hor. Datum _____ Vert. Datum _____

LATITUDE _____

LONGITUDE _____

ELLIPS. HT. _____

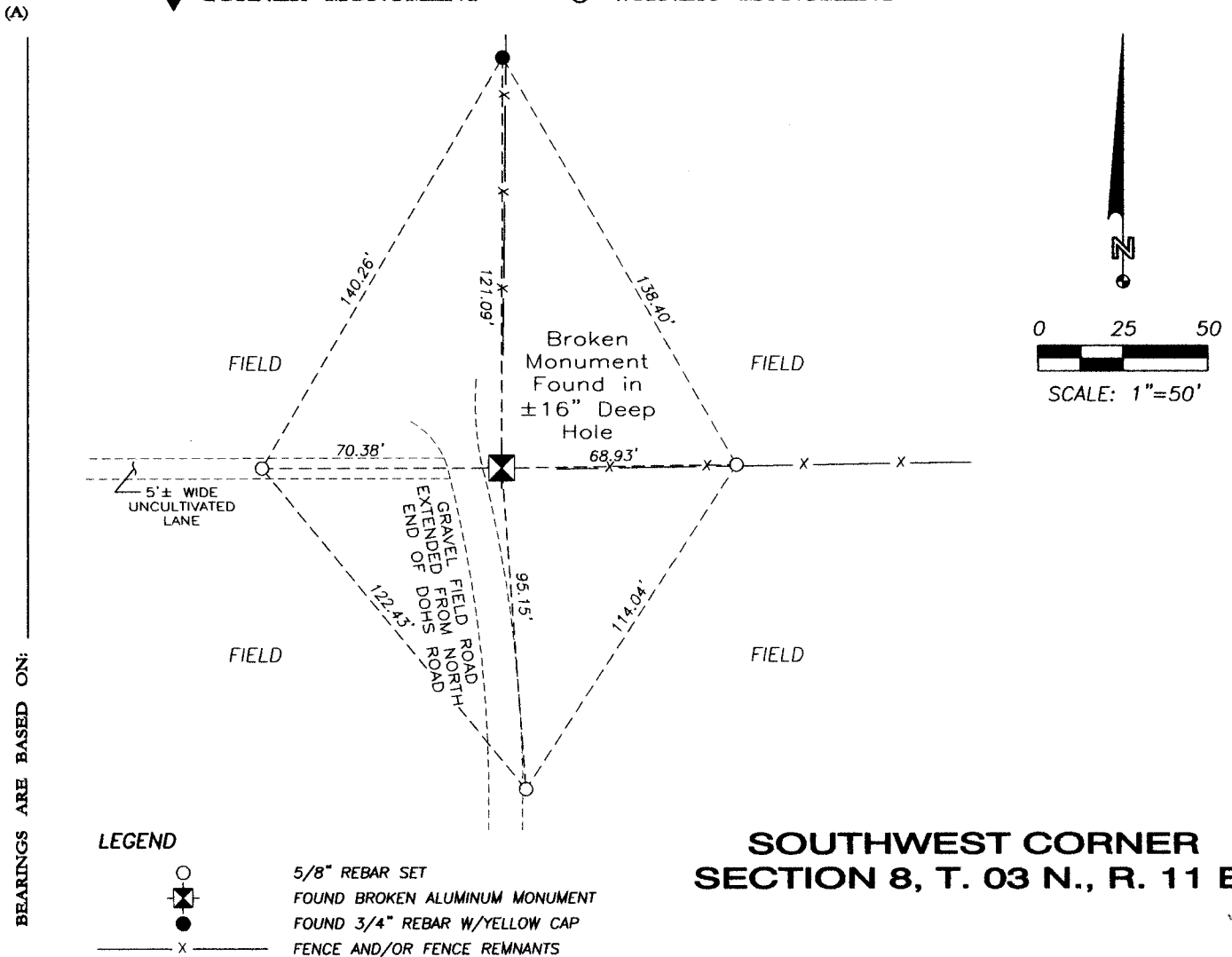
NAD83(91) _____ NETWORK ADJ. YR 2010

GPS (X) _____ TRAVERSE (X) _____

BASED ON THE FOLLOWING CONTROL:

PLACE MONUMENT SYMBOL AT PROPER LOCATION ON ABOVE INDEX

◆ CORNER MONUMENT ○ WITNESS MONUMENT



FIELD BOOK 1 PAGE # 62

SHEET 1 OF 1

SHOW A PLAN VIEW DRAWING DEPICTING THE CORNER MONUMENT AND SURROUNDING PHYSICAL FEATURES, INCLUDING THE EXCAVATION AREA AND DEPTH.

CORNER CODE 543CE

J-5(1)

(B) Describe any record evidence, monument evidence, occupational evidence, testimonial evidence or any other material evidence you considered, and whether the monument was found or placed.

I found a broken aluminum monument in a ±16 inch deep hole at the approximate intersection of fence and fence remnants running North and East and a 3/4" rebar w/yellow cap Witness Monument. The location fit coordinates provided by the Rock County Surveyor and the field located distance to the South 1/4 corner of Section 8, T 03 N, R 11 E agreed with the computed coordinate distance on file in the Rock County Surveyor's office.

(C) Was the corner restored through acceptance of (1) an obliterated evidence location, or, (2) a found perpetuated location?

Found perpetuated location.

3

(D) Describe any material discrepancy between the location of the corner as restored or reestablished and the location of that corner as previously restored or reestablished by distance and direction. Show the discrepancy on the plan view drawing under (A) above. Show the distances between the corner as previously restored or reestablished and (1) the corner as restored or reestablished, and (2) to at least 4 of the witness monuments shown on the drawing in (A), above.

I accepted the monument location and set 3 additional witness monuments as shown.

(E) Was the corner reestablished through lost corner proportionate methods? If so, show the method, including the directions and distance to other public land survey corners used as evidence or used for proportioning the corner location.

No.

I, Steven L. Oftedahl, hereby certify that the corner location as defined by the corner code index was determined by me under my direction and control and that this U.S. Public Land Survey Monument Record is correct and complete to the best of my knowledge and belief.



Steven L. Oftedahl 6-21-2011

SHEET 1 OF 1

CORNER CODE 543CE

J-5(1)