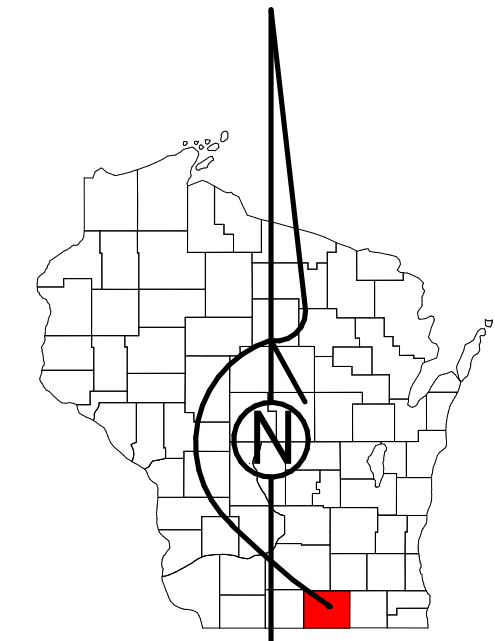


# Property Division Map

City  
of  
Edgerton

T. 4 N. - R. 12 E.  
Section 10 SENE



STATE OF WISCONSIN  
COUNTY OF ROCK

PREPARED BY

REAL PROPERTY DESCRIPTION  
DEPARTMENT

USING

ROCK COUNTY  
GEOGRAPHIC INFORMATION SYSTEM

DUPLICATION OF THIS MAP PROHIBITED  
WITHOUT THE WRITTEN CONSENT OF THE  
REAL PROPERTY DESCRIPTION DEPARTMENT.

THIS MAP WAS PREPARED PURSUANT  
TO SECTION 31.09 WIS. STATS.  
USING PUBLIC RECORDS. IT IS NOT INTENDED  
TO BE A SUBSTITUTE FOR AN  
ACTUAL FIELD SURVEY  
AND IS ADVISORY ONLY.

DISTANCES SHOWN ON THIS  
MAP WERE PRODUCED BY  
THE GIS SYSTEM AND ARE  
FOR REFERENCE ONLY.  
SEE DOCUMENT OF RECORD  
FOR ACTUAL DISTANCE.

0 12.5 25 50 75 100  
Feet

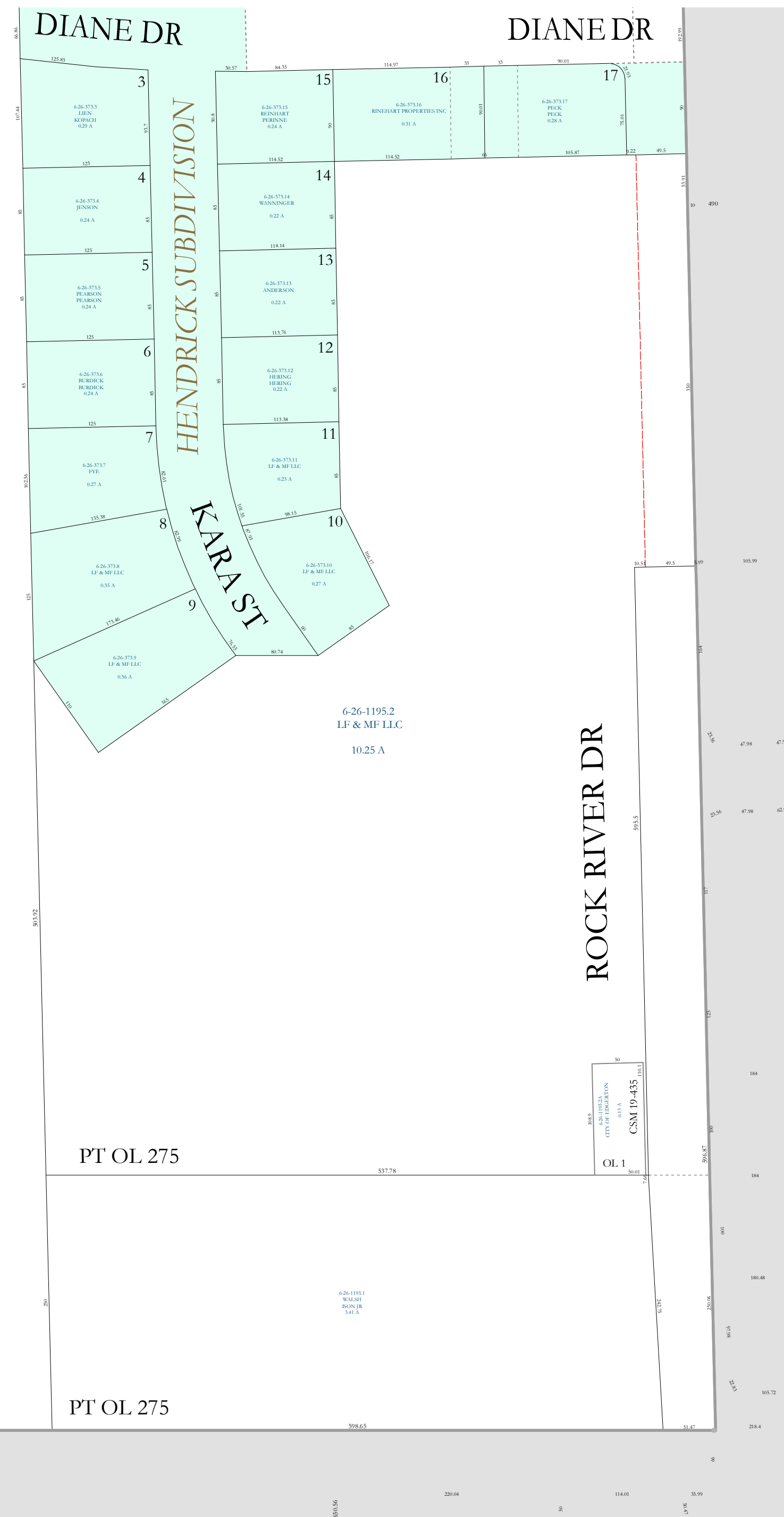
- |  |                |  |              |
|--|----------------|--|--------------|
|  | Gap            |  | dam          |
|  | Overlap        |  | easement     |
|  | Town of Fulton |  | hydro        |
|  | CSM            |  | lots         |
|  | CSMHYDRO       |  | parcels      |
|  | CSMLOT         |  | parcelshydro |
|  | CSMLOTHYDRO    |  | roadrwy      |
|  | MFL            |  |              |

See Pages

January 1, 2019

10 SENE

10 NENE



Town of Fulton

Town of Fulton

OL 272  
6-26-1186A  
EDGERTON SAND & GRAVEL CO  
14.95 A  
510.07  
510.07  
510.07  
OL 270  
1132.19

PT OL 272

PT OL 275

PT OL 275

OL 1  
6-26-1195.1  
WALSH  
8.00 A  
3.41 A

6-26-1195.2  
LF & MF LLC  
10.25 A

6-26-1192  
GRANSTAN LTD  
70.21 A