

# PLAT AND RECORD

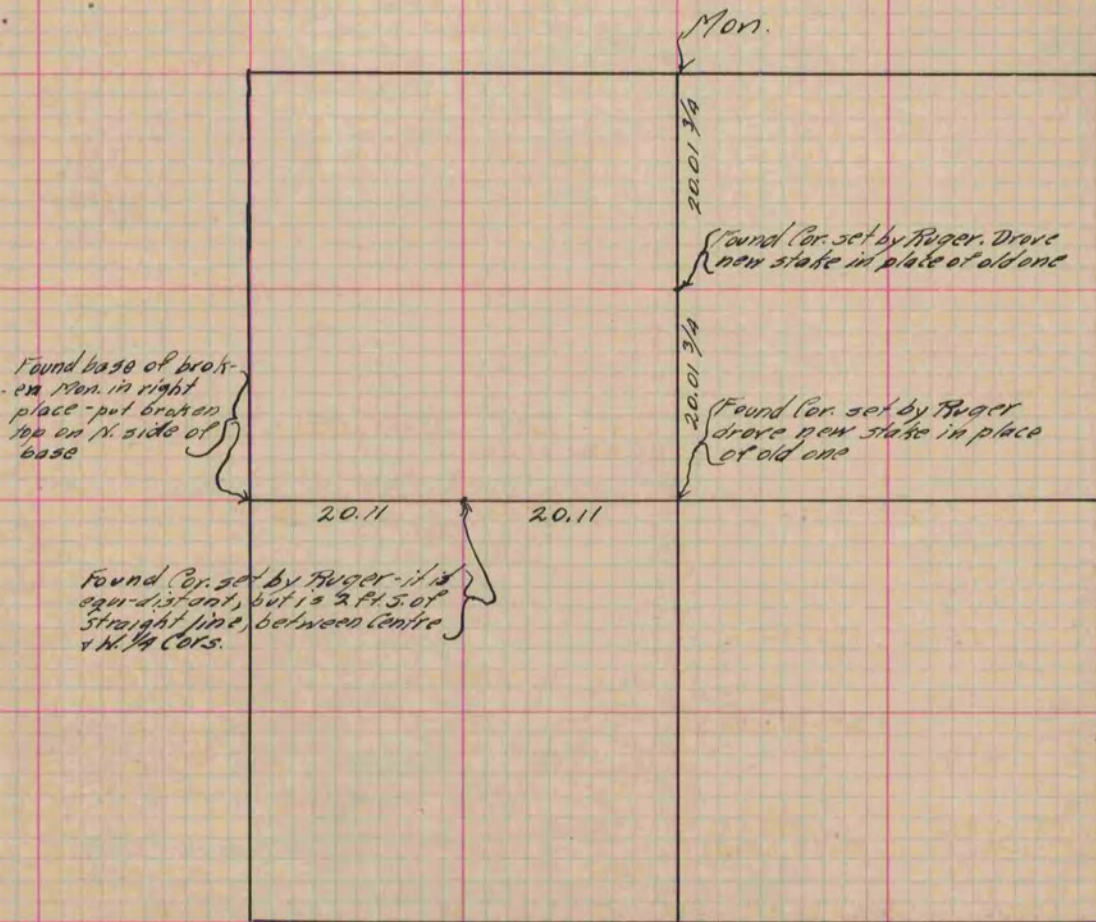
Of a Survey on Section 25 T A R 13 E. of the 4 P. M. in Milton Township  
Rock County, Wisconsin, made June the 16 1893

I hereby certify that the following is a correct record of said survey as made by me.

COUNTY BUILDING  
IN CITY OF BELOIT

(Signed) O. G. Bleedorn  
O. G. B.

County Surveyor.



Copied from P. 372 Vol. 2 County Surveyor's Record.