

PLAT AND RECORD

Of a Survey on Section **9** T **1 N**, R **12** E. of the 4 P. M. in **BELOIT** Township

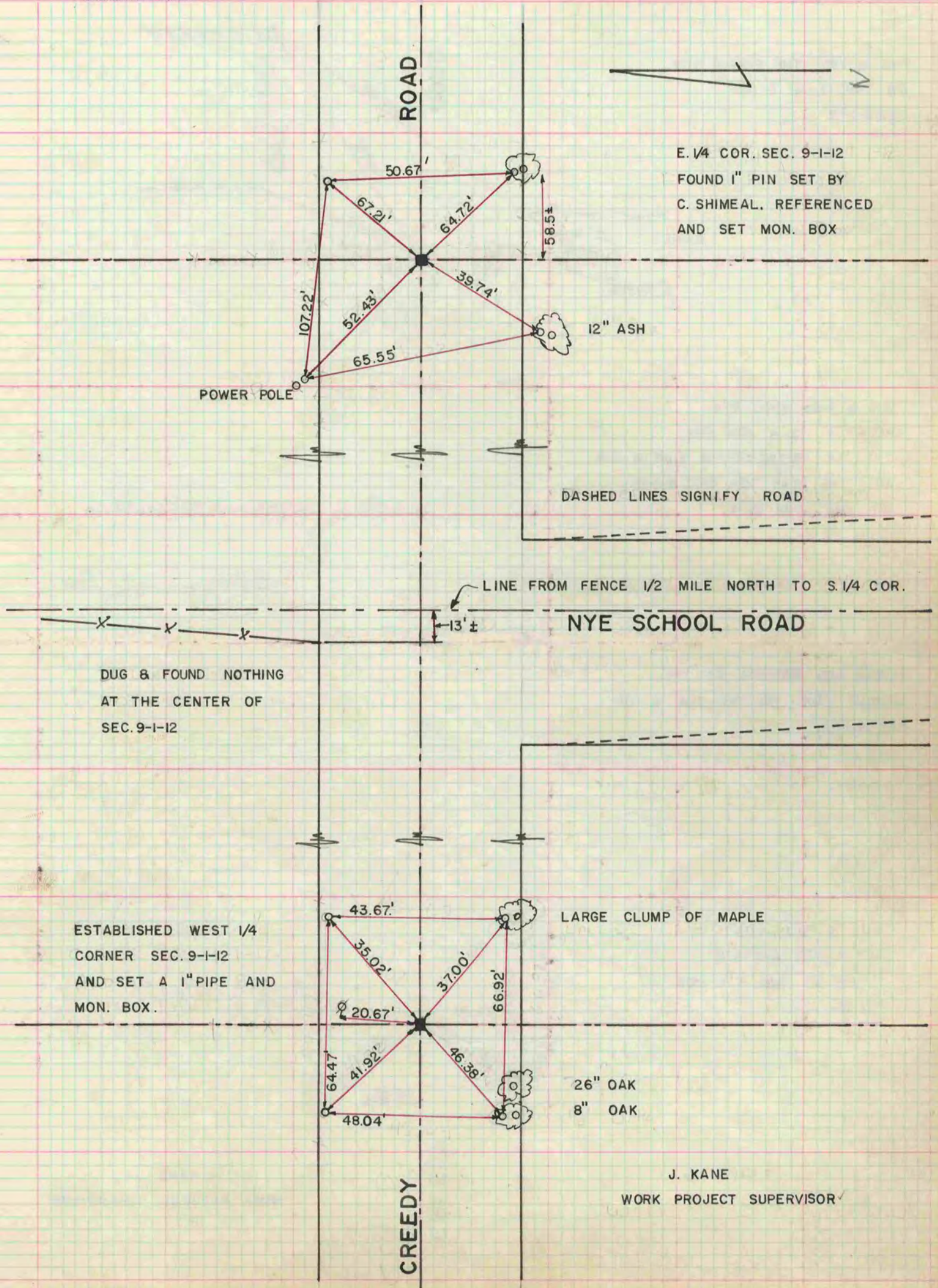
Rock County, Wisconsin, made **OCT. 1962** the **JULY 1963**

I hereby certify that the following is a correct record of said survey as made by me.

**COUNTY BUILDING
IN CITY OF BELOIT**

R. H. B. Jr. *RHB*
County Surveyor

THE GEO. F. BARNARD COMPANY, ST. LOUIS



J. KANE
WORK PROJECT SUPERVISOR