

# PLAT AND RECORD

Of a Survey on Section 15 T 2 R 11 E. of the 4 P. M. in Plymouth Township

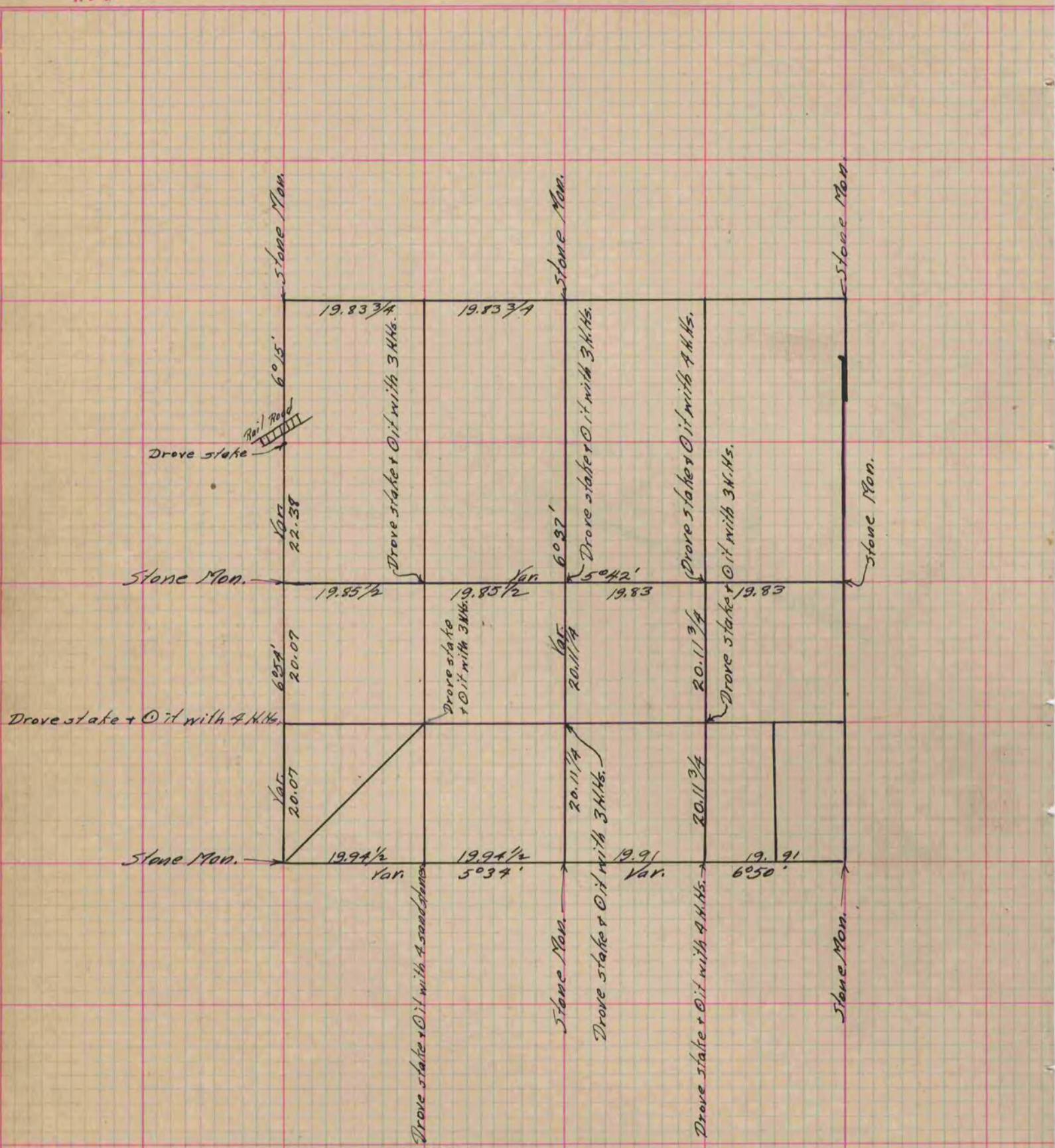
Rock County, Wisconsin, made October the 21 1873

I hereby certify that the following is a correct record of said survey as made by me.

COUNTY BUILDING  
IN CITY OF BELOIT

(Signed) Edward Ruger  
CRS

County Surveyor.



Copied from Page 70 Vol. 2 Original County Surveyor's Record.