

U.S. PUBLIC LAND SURVEY MONUMENT RECORD

For Public Land Survey Corners in:

WI ADMINISTRATIVE CODE A-E 7.08 REQUIREMENT

T 3 N., R. 11 E

CORNER CODE INDEX

A	2	3	4	5	6	7	8	9	10	11	12	13	14	15	16	17	18	19	20	21	22	23	24	25
B																								
C	6																							
D																								
E																								
F																								
G	7																							
H																								
I																								
J																								
K	18																							
L																								
M																								
N																								
O																								
P	19																							
Q																								
R																								
S																								
T	30																							
U																								
V																								
W																								
X	31																							
Y																								
Z																								

CENTER TWP

ROCK COUNTY WI

IF AVAILABLE
ROCK COUNTY COORDINATES PERFERRED

North _____ Elev. _____

East _____

Hor. Datum _____ Vert. Datum _____

LATITUDE _____ ELLIPS. HT. _____

LONGITUDE _____

GPS (X) _____ TRAVERSE (X) _____

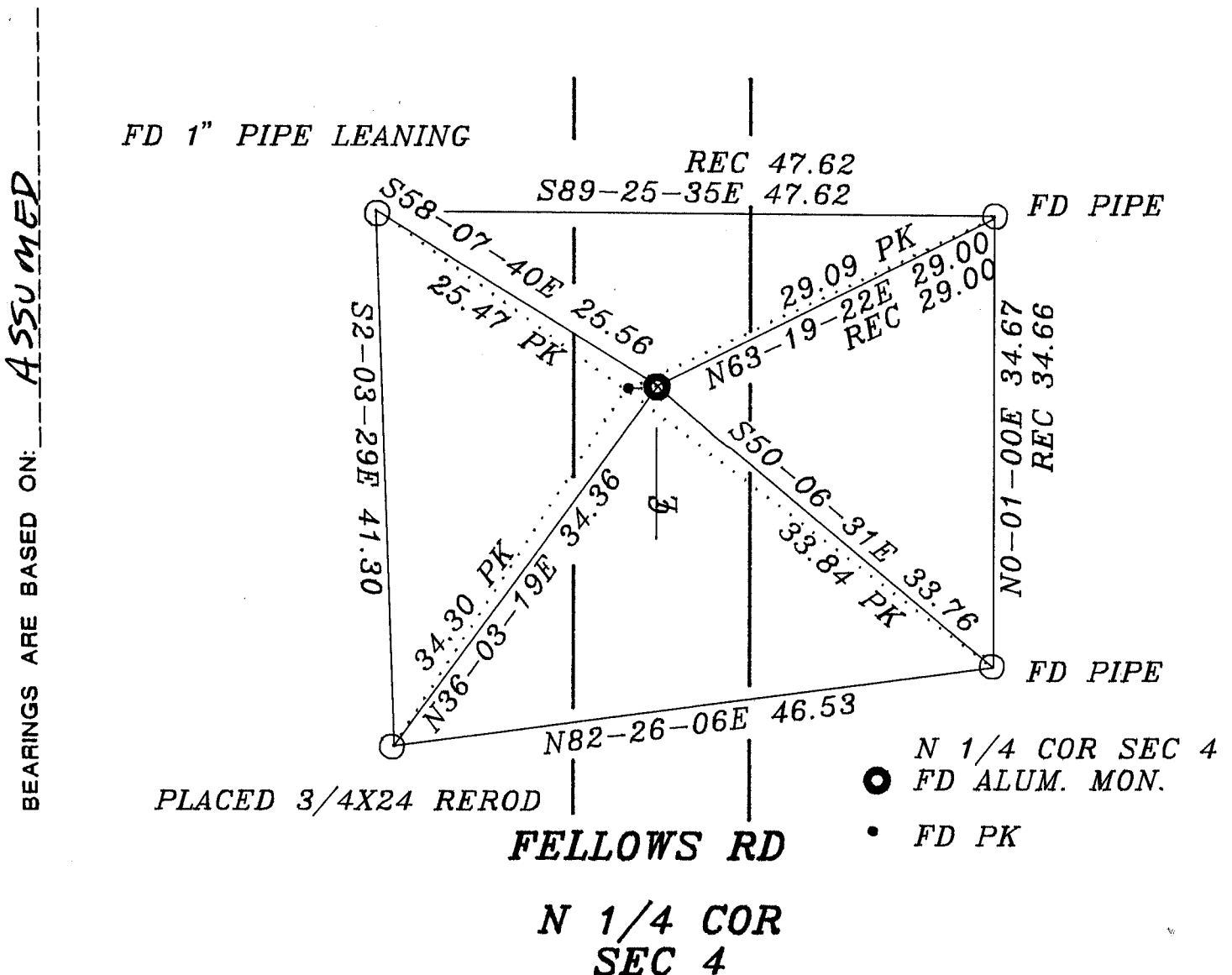
BASED ON THE FOLLOWING CONTROL:

PLACE MONUMENT SYMBOL \blacklozenge AT PROPER LOCATION ON ABOVE INDEX

\blacklozenge CORNER MONUMENT

\circ WITNESS MONUMENT

(a)



OBSERVATION sheet 506

FIELD BOOK _____ PAGE # _____

SHEET _____ OF _____

SHOW A PLAN VIEW DRAWING DEPICTING THE CORNER MONUMENT AND SURROUNDING PHYSICAL FEATURES, INCLUDING THE EXCAVATION AREA AND DEPTH.

PLANNING & ZONING COMMITTEE ADOPTED THE ABOVE FORM ON 12/2/1982

CORNER CODE A-11

CE506

(B) Describe any record evidence, monument evidence, occupational evidence, testimonial evidence or any other material evidence you considered, and whether the monument was found or placed.

1974 LEE VOL 5 PG 38 SET ALUM. MON. & REFERENCED SAME.

197? LEE VOL 5 PG 467 CALLS FOR LOCAL COORDINATES TO THE NEAREST FOOT OF PLSS CORNERS ON THE NORTH LINE OF SEC 4.

1979 BARNES VOL 6 PG 5 CALLS FOR 2620.16 TO NE COR SEC 4, 5050.10 TO S 1/4 COR SEC 4, & AND ANGLE OF 91-13-45 AT N 1/4 COR SEC 4 FROM THE NE COR TO THE S 1/4 COR OF SEC 4.

ORIGINAL GOVERNMENT SURVEYOR DID NOT SET THE CORNER AND COUNTY SURVEYOR'S RECORDS SHOW ONLY THE ABOVE.

C) Was the corner restored through acceptance of (1) an obliterated evidence location, or, (2) a found perpetuated location?
ACCEPTED FOUND PERPETUATED LOCATION.

D) Describe any material discrepancy between the location of the corner as restored or reestablished and the location of that corner as previously restored or reestablished by distance and direction. Show the discrepancy on the plan view drawing under (a), above. Show the distances between the corner as previously restored or reestablished and (1) the corner as restored or reestablished, and (2) to at least 4 of the witness monuments shown on the drawing in (a), above.
SEE MAP

(E) Was the corner reestablished through lost corner proportionate methods? If so, show the method, including the directions and distances to other public land survey corners used as evidence or used for proportioning the corner location.

I, Donald Barnes, hereby certify that the corner location as identified by the corner code index was determined by me under by direction and control and that this U.S. Public Land Survey Monument Record is correct and complete to the best of my knowledge and belief.

Donald Barnes
Dec 6, 1996

Number of included sheets _____

emboss

CORNER CODE

A-E 7.08 REQUIREMENT

A-11