

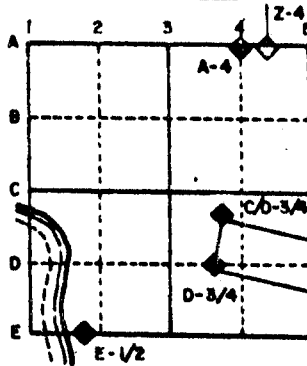
U.S. PUBLIC LAND SURVEY MONUMENT RECORD

For Public Land Survey Corners in the
T. 3N., R. 11E.

CORNER CODE INDEX

	1	2	3	4	5	6	7	8	9	10	11	12	13	14	15	16	17	18	19	20	21	22	23	24	25
A																									
B																									
C	6																								
D		5																							
E			4																						
F				3																					
G					2																				
H																									
I																									
J																									
K																									
L																									
M																									
N																									
O																									
P																									
Q																									
R																									
S																									
T																									
U																									
V																									
W																									
X																									
Y																									
Z																									

EXAMPLE



CENTER TWP
ROCK COUNTY WI

FD 1 1/2" PIPE
246,136.22
2,233,920.13

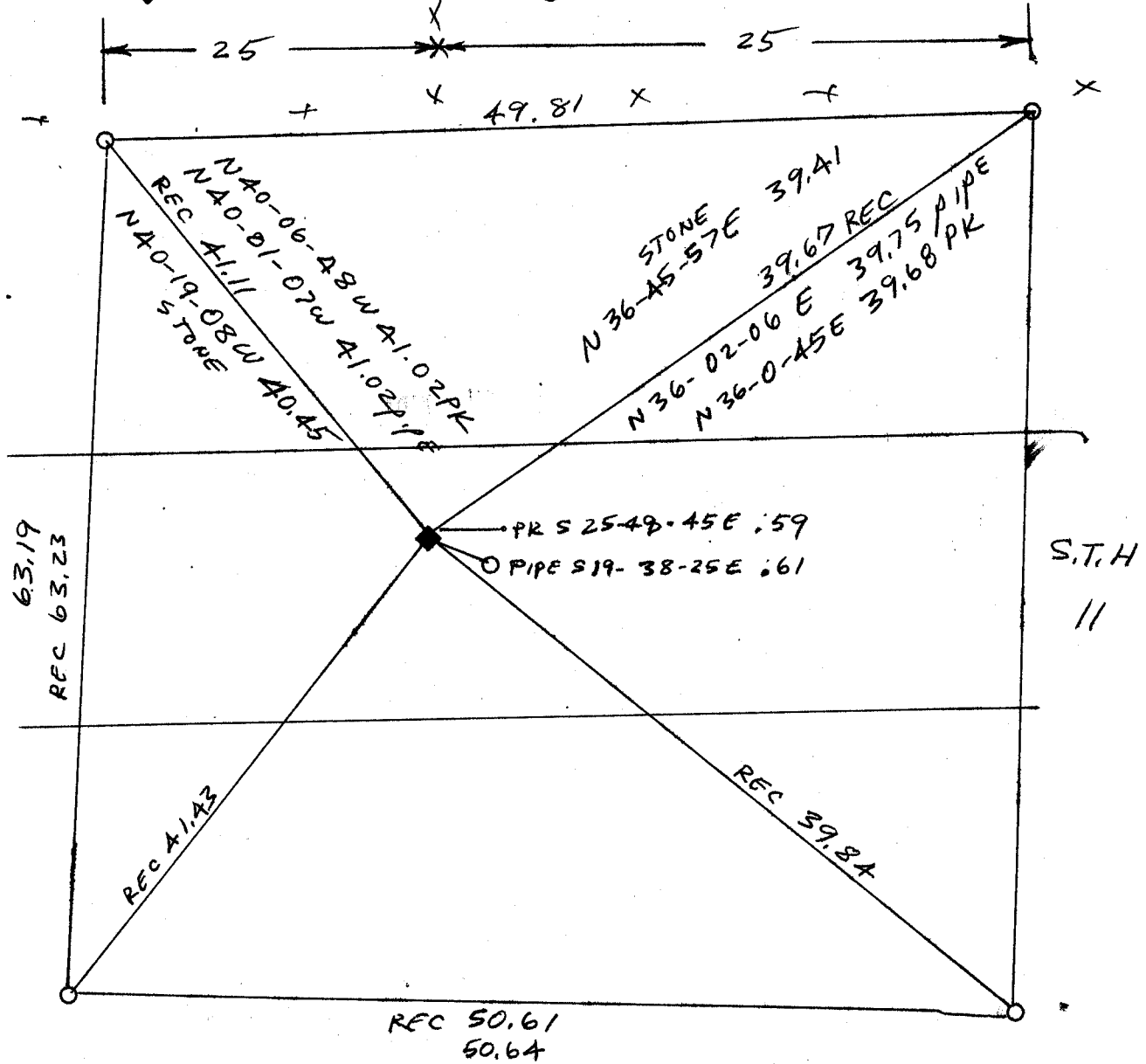
IF AVAILABLE STATE PLANE COORDINATES

USING P.O.T. CONTROL
 North (Y) 246,136.80 Eleve. (Z) _____
 East (X) 2,233,919.92 Zone _____
 Hor. Datum _____ Vert. Datum _____

PLACE MONUMENT SYMBOL (◆) AT PROPER LOCATION ON ABOVE INDEX
 PK JANESVILLE PROJECT 246,136.05 PK DOT CONTROL 246,136.27
 2,233,920.98 2,233,920.18

a.)

◆ CORNER MONUMENT ○ WITNESS MONUMENT



BEARINGS ARE BASED ON:



FIELD BOOK 3
page 8

MICROFILMED

SHEET 1 OF 1

CORNER CODE: 2 25

1833 ORIGINAL GOVERNMENT SURVEY. SET POST CORNER TOWNSHIPS 2 & 3 N. RANGES 11 & 12 E IN PRAIRIE AND RAISED A MOUND LAND ROLLING

1868 LOCKE REMONUMENTATION FOUND STONE & UNDERNEATH REMAINS OF STAKE. CORNER IN CENTER OF HIGHWAY AND NEARLY IN LINE WITH N & S FENCES.

1933 SUNNY VOL 3 PG 234 SET 1" IRON PIPE 30" LONG IN CONCRETE PAVEMENT 0.9' NORTH OF CENTER OF PAVEMENT & IN LINE WITH N & S FENCE. SHOWS A DISTANCE OF 2657.8 TO THE EAST QUARTER CORNER OF SECTION 1 AND 2667.2 TO THE NORTH QUARTER CORNER OF SECTION 1 AND 2629.45 TO THE NORTH QUARTER CORNER OF SECTION 6.

1970 BATTERMAN JR. VOL 4 PG 432 FOUND 3/4" IRON PIN AT CORNER 1' NORTH OF CENTER OF PAVEMENT. REFERENCED CORNER.

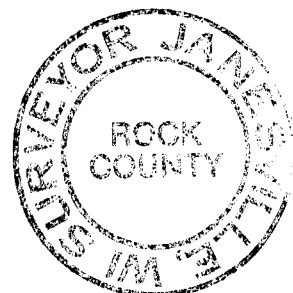
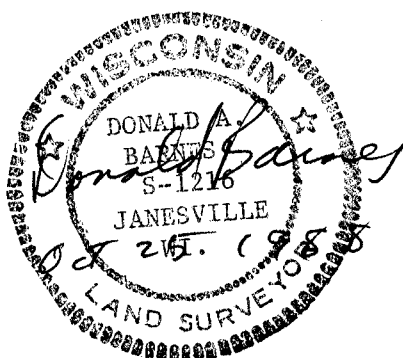
1987 BARNES Z-1(1) FOUND PK AND 3 OF THE REFERENCE PIPES. PLACED G-1 MONUMENT TO THE NORTH EAST.
 FOUND PIPE 15" DEEP IN OLD CONCRETE PAVEMENT. DUG LARGE HOLE AND FOUND CUT LIMESTONE 2 1/2" X 8" 40 INCHES DEEP. BROKE TOP 16 INCHES OFF. PLACED MAGNET ON TOP OF STONE. EXCAVATION AREA INDICATES THAT SUNNY DID NOT DIG FOR THE CORNER.

(C) Was the corner restored through acceptance of (1) an obliterated evidence location, or, (2) a found perpetuated location.

ACCEPTED FOUND CUT LIMESTONE.

(d) Describe any material discrepancy between the location of the corner as restored or reestablished and the location of that corner as previously restored or reestablished by distance and direction. show the discrepancy on the plan view drawing under (a), above. Show the distances between the corner as previously restored or reestablished and (1) the corner as restored or reestablished, and (2) to at least 4 of the witness monuments shown on the drawing in (a), above.

THE PK, PIPE, AND CUT LIMESTONE WERE NOT AT THE SAME LOCATION. MAP ON OTHER SIDE SHOWS DISCREPANCY.



2 25