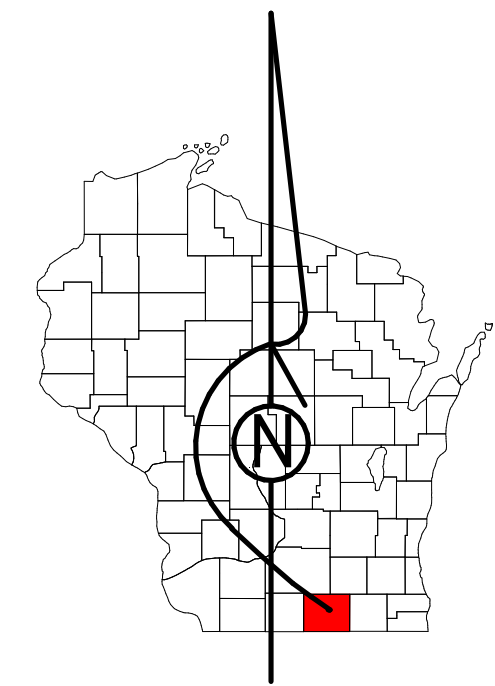


Property Division Map

Town
of
Bradford

T. 2 N. - R. 14 E.
Section 02



STATE OF WISCONSIN
COUNTY OF ROCK

PREPARED BY

REAL PROPERTY DESCRIPTION
DEPARTMENT
USING
ROCK COUNTY
GEOGRAPHIC INFORMATION SYSTEM

DUPLICATION OF THIS MAP PROHIBITED
WITHOUT THE WRITTEN CONSENT OF THE
REAL PROPERTY DESCRIPTION DEPARTMENT.

THIS MAP WAS PREPARED PURSUANT
TO SECTION 70.09 WIS. STATS.
USING PUBLIC RECORDS. IT IS NOT INTENDED
TO BE A SUBSTITUTE FOR AN
ACTUAL FIELD SURVEY
AND IS ADVISORY ONLY.

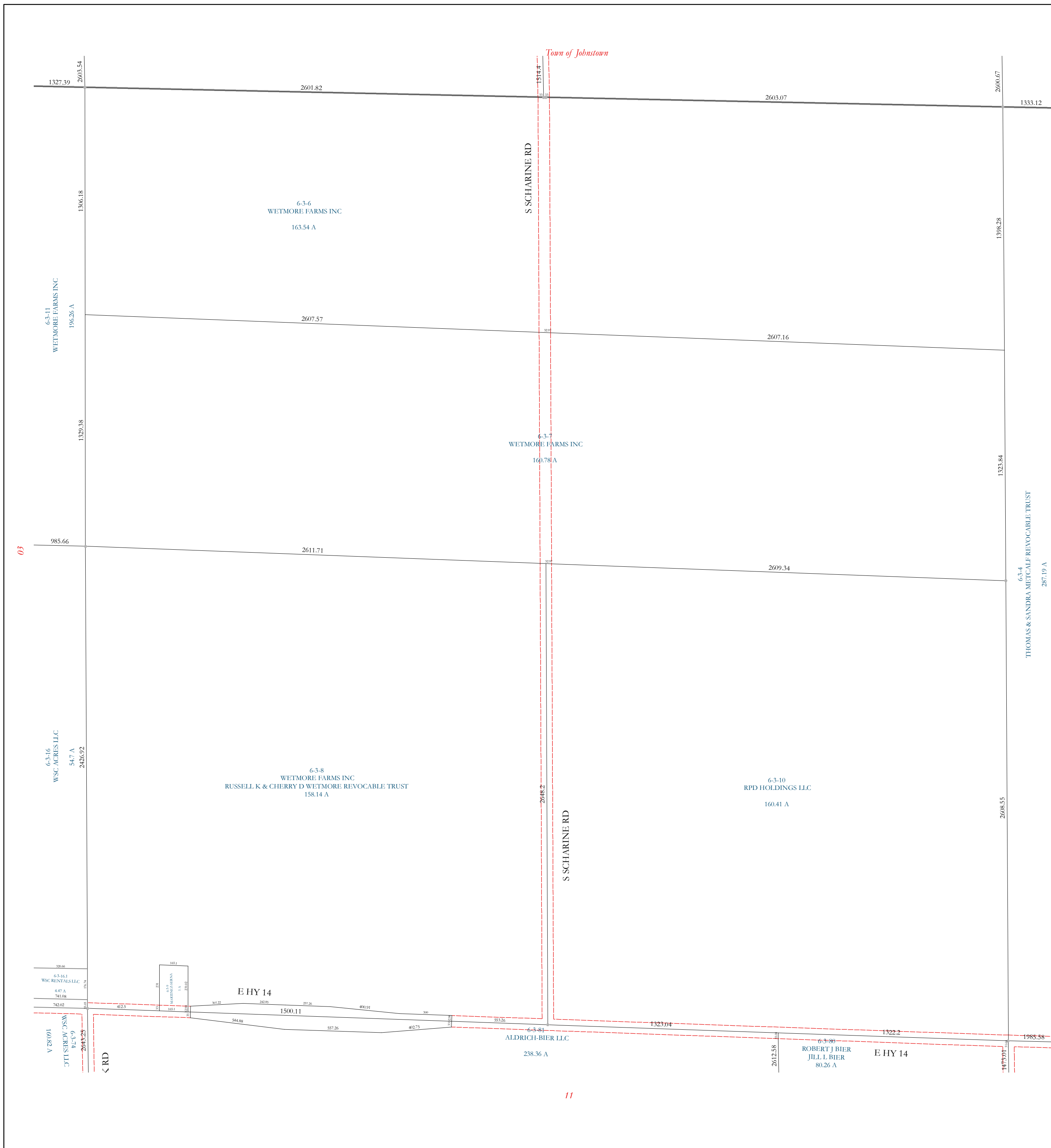
DISTANCES SHOWN ON THIS
MAP WERE PRODUCED BY
THE GIS SYSTEM AND ARE
FOR REFERENCE ONLY.
SEE DOCUMENT OF RECORD
FOR ACTUAL DISTANCE.

0 50 100 200 300 400
Feet

- | | | | |
|--|-------------|--|--------------|
| | Gap | | dam |
| | Overlap | | casement |
| | CSM | | hydro |
| | CSMHYDRO | | lots |
| | CSMLOT | | parcels |
| | CSMLOTHYDRO | | parcelshydro |
| | MFL | | roadrw |

See Pages

January 1, 2019



Town of Johnstown

S SCHARINE RD

S SCHARINE RD

6-3-6
WETMORE FARMS INC
163.54 A

6-3-7
WETMORE FARMS INC
160.78 A

6-3-8
WETMORE FARMS INC
RUSSELL K & CHERRY D WETMORE REVOCABLE TRUST
158.14 A

6-3-10
RPD HOLDINGS LLC
160.41 A

E HY 14

6-3-8A
ALDRICH-BIER LLC
238.36 A

6-3-8B
ROBERT BIER
JILL L BIER
80.26 A

E HY 14

03

10

11