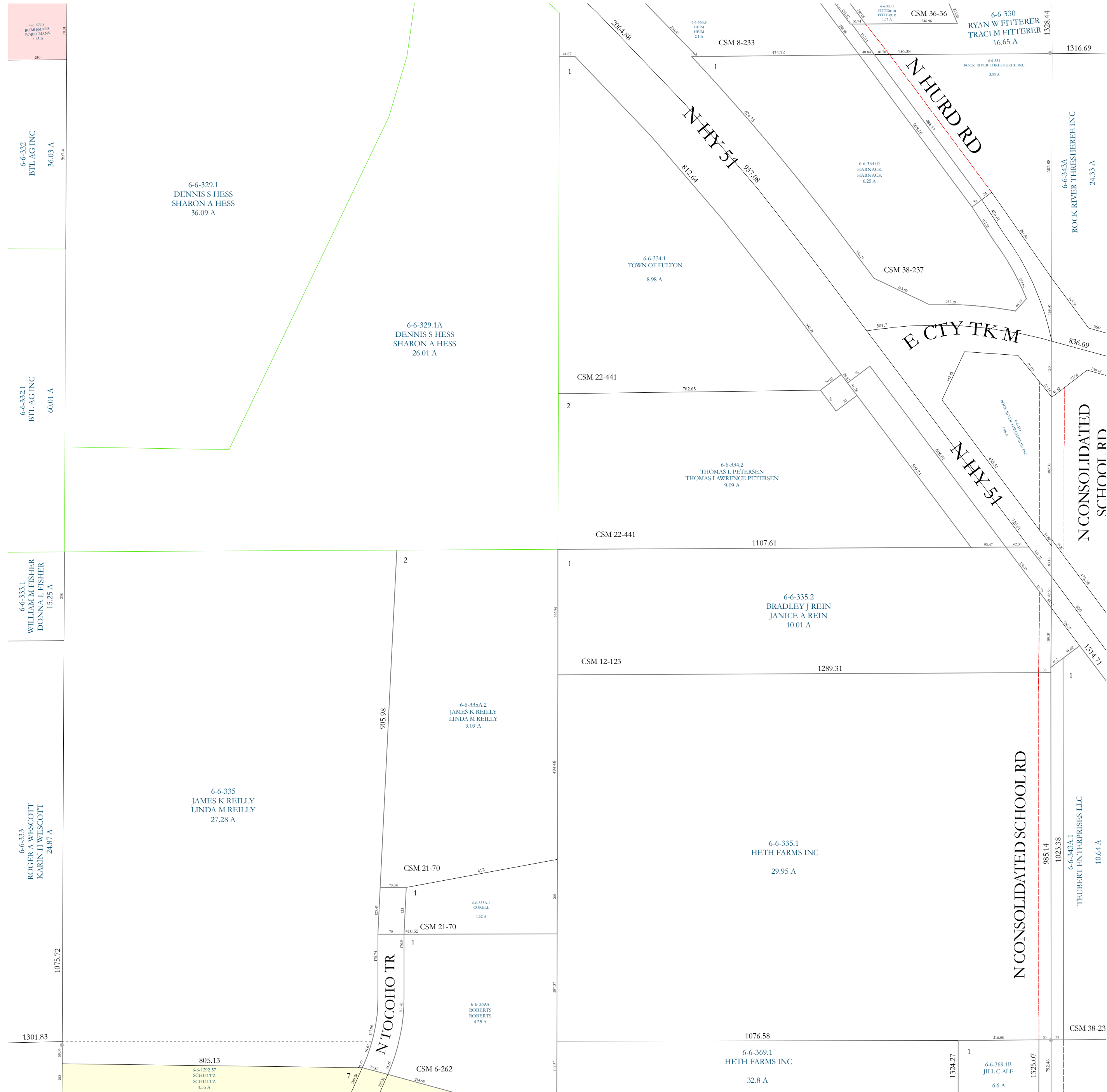


22 NE

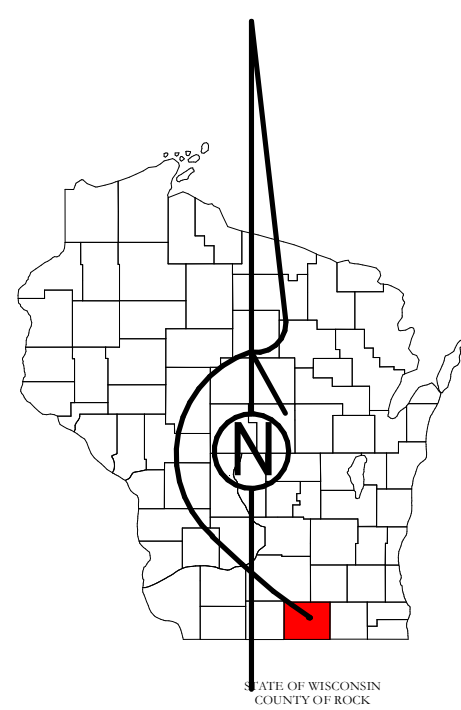


27 NE

Property Division Map

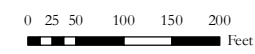
Town of
Fulton

T. 4 N. - R. 12 E.
Section 22 SE



PREPARED BY
**REAL PROPERTY DESCRIPTION
 DEPARTMENT**
 USING
**ROCK COUNTY
 GEOGRAPHIC INFORMATION SYSTEM**

DUPLICATION OF THIS MAP PROHIBITED
 WITHOUT THE WRITTEN CONSENT OF THE
 REAL PROPERTY DESCRIPTION DEPARTMENT.
 THIS MAP WAS PREPARED PURSUANT
 TO SECTION 70.09 WIS. STATS.
 USING PUBLIC RECORDS. IT IS NOT INTENDED
 TO BE A SUBSTITUTE FOR AN
 ACTUAL FIELD SURVEY
 AND IS ADVISORY ONLY.
 DISTANCES SHOWN ON THIS
 MAP WERE PRODUCED BY
 THE GIS SYSTEM AND ARE
 FOR REFERENCE ONLY.
 SEE DOCUMENT OF RECORD
 FOR ACTUAL DISTANCE.



- Gap
- Overlap
- City of Edgerton
- CSM
- CSMHYDRO
- CSMLOT
- CSMLOTHYDRO
- MFL
- dam
- easement
- hydro
- lots
- parcels
- parcelhydro
- roadw

See Pages

January 1, 2019

22 SE