

PLAT AND RECORD

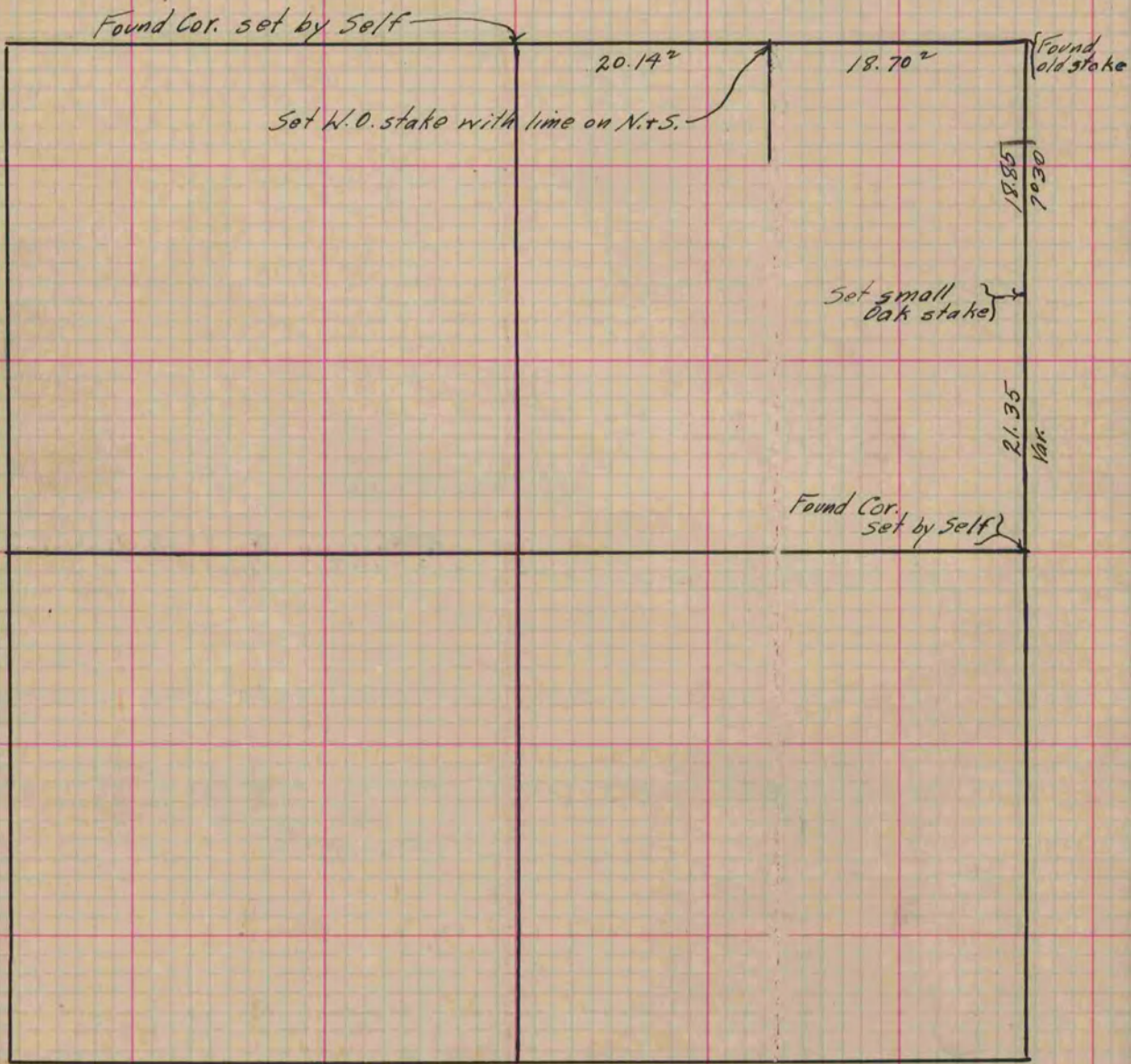
Of a Survey on Section 13 T 2 R 12 E. of the 4 P. M. in Rock Township
Rock County, Wisconsin, made November the 1st 1869

I hereby certify that the following is a correct record of said survey as made by me.

COUNTY BUILDING
IN CITY OF BELOIT

(Signed) R. K. Lee
R. H. B.

Deputy
County Surveyor.



Copied from lower 1/2 of Page 8 Vol. 2. Original County Surveyor's Record.