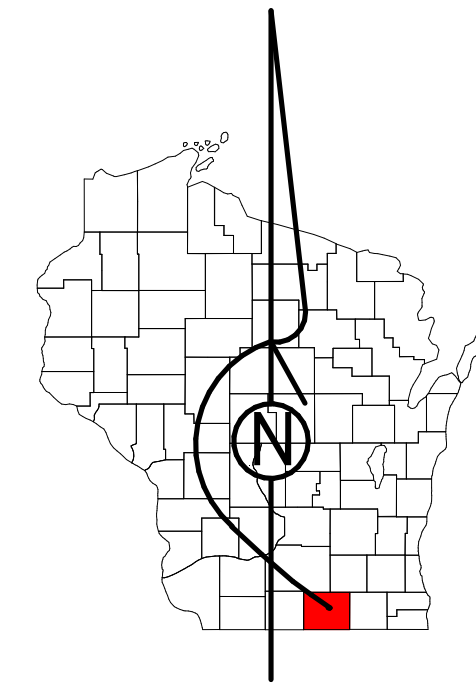


Property Division Map

City of Edgerton

T. 4 N. - R. 12 E.

Section 03 NE



STATE OF WISCONSIN
COUNTY OF ROCK

PREPARED BY

REAL PROPERTY DESCRIPTION DEPARTMENT

USING

ROCK COUNTY GEOGRAPHIC INFORMATION SYSTEM

DUPLICATION OF THIS MAP PROHIBITED
WITHOUT THE WRITTEN CONSENT OF THE
REAL PROPERTY DESCRIPTION DEPARTMENT.

THIS MAP WAS PREPARED PURSUANT
TO SECTION 7609 WIS. STATS.
USING PUBLIC RECORDS. IT IS NOT INTENDED
TO BE A SUBSTITUTE FOR AN
ACTUAL FIELD SURVEY
AND IS ADVISORY ONLY.

DISTANCES SHOWN ON THIS
MAP WERE PRODUCED BY
THE GIS SYSTEM AND ARE
FOR REFERENCE ONLY.
SEE DOCUMENT OF RECORD
FOR ACTUAL DISTANCE.

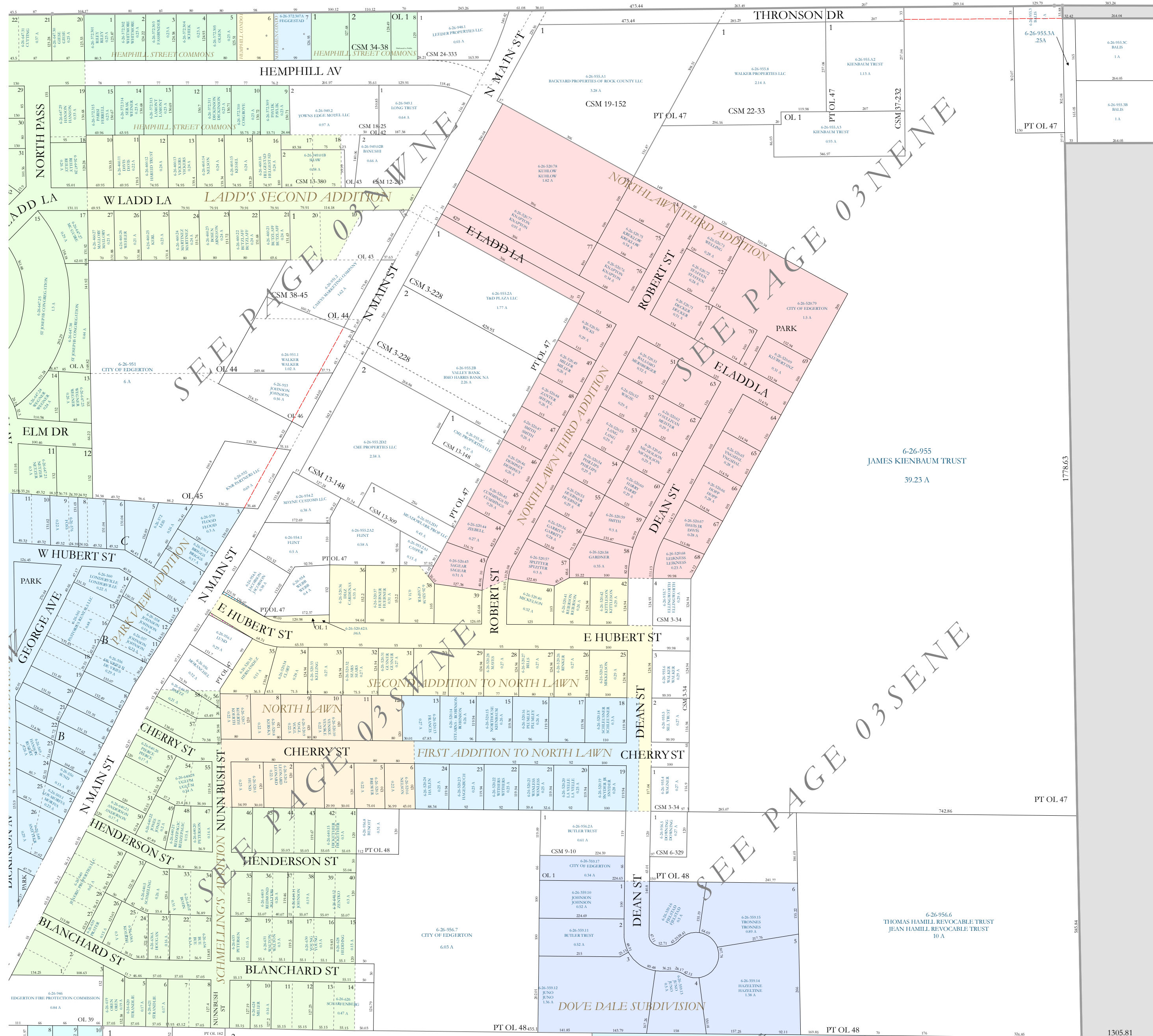
0 25 50 100 150 200
Feet

- Gap
- Overlap
- Town of Fulton
- CSM
- CSMHYDRO
- CSMLOT
- CSMLOTHYDRO
- MFL
- dam
- easement
- hydro
- lots
- parcels
- parcelhydro
- roadrw

See Pages

January 1, 2019

03 NE



02 NW

02 NW

03 SE